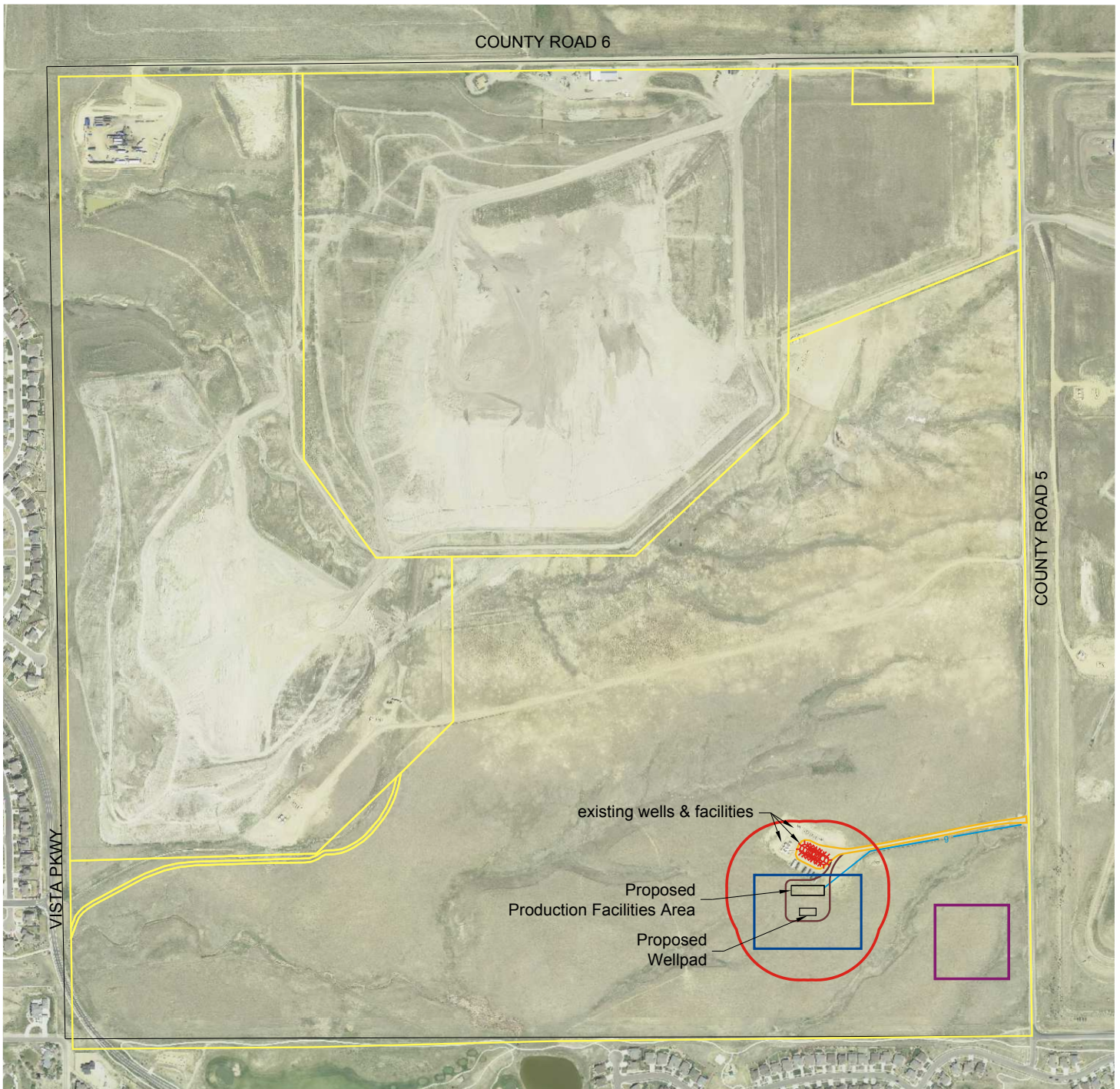


EXHIBIT B



- Parcels
- g — Gas Line
- New Access
- Existing Access
- Drill Site Area
- Completions Area
- 350' Setback



TOWNSHIP 1 NORTH, RANGE 68 WEST
SECTION 29

WELD COUNTY, COLORADO

SCALE: 1" = 800'

JULY 24, 2013