

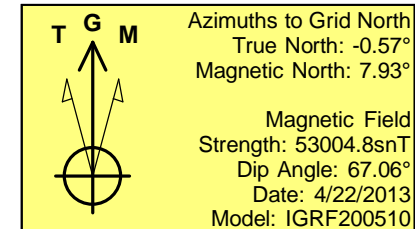
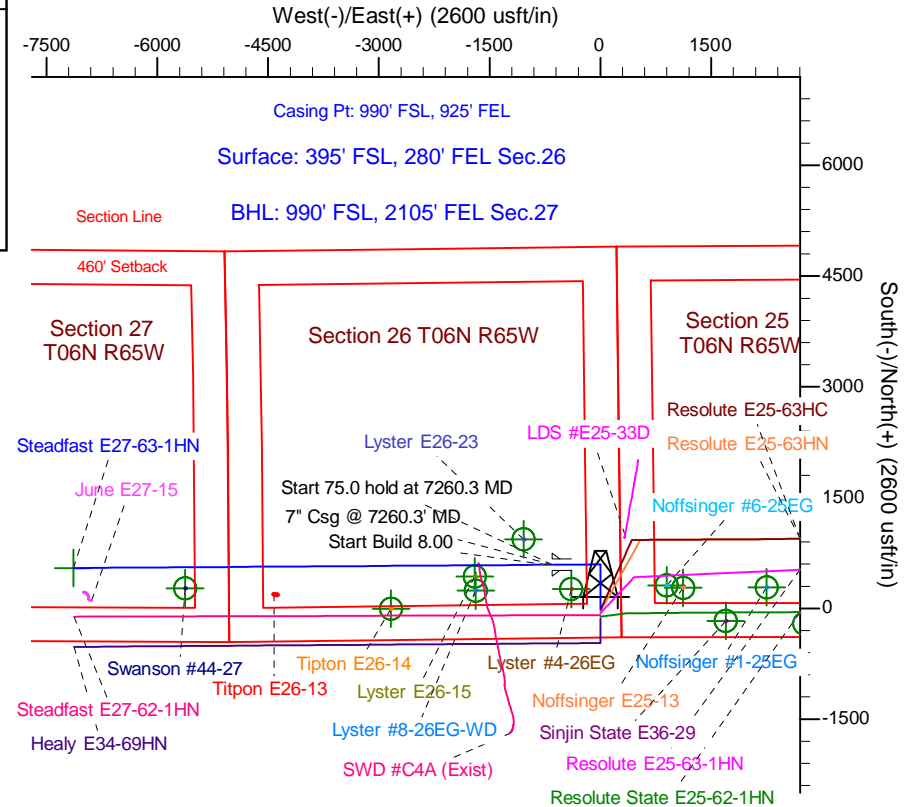
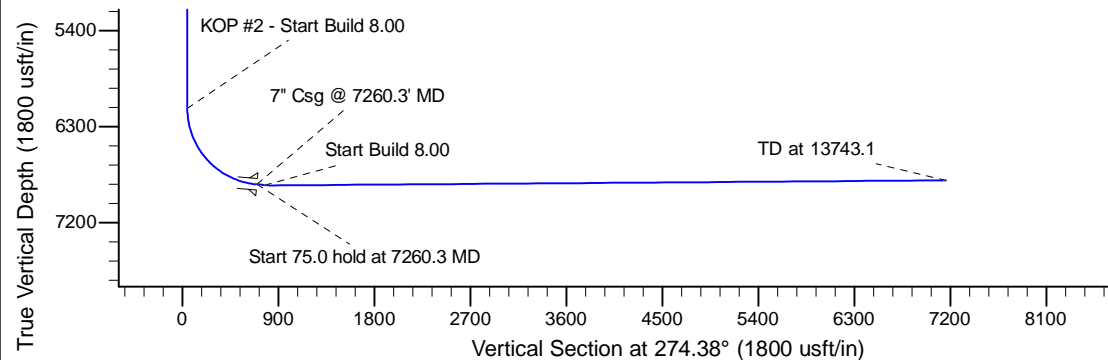
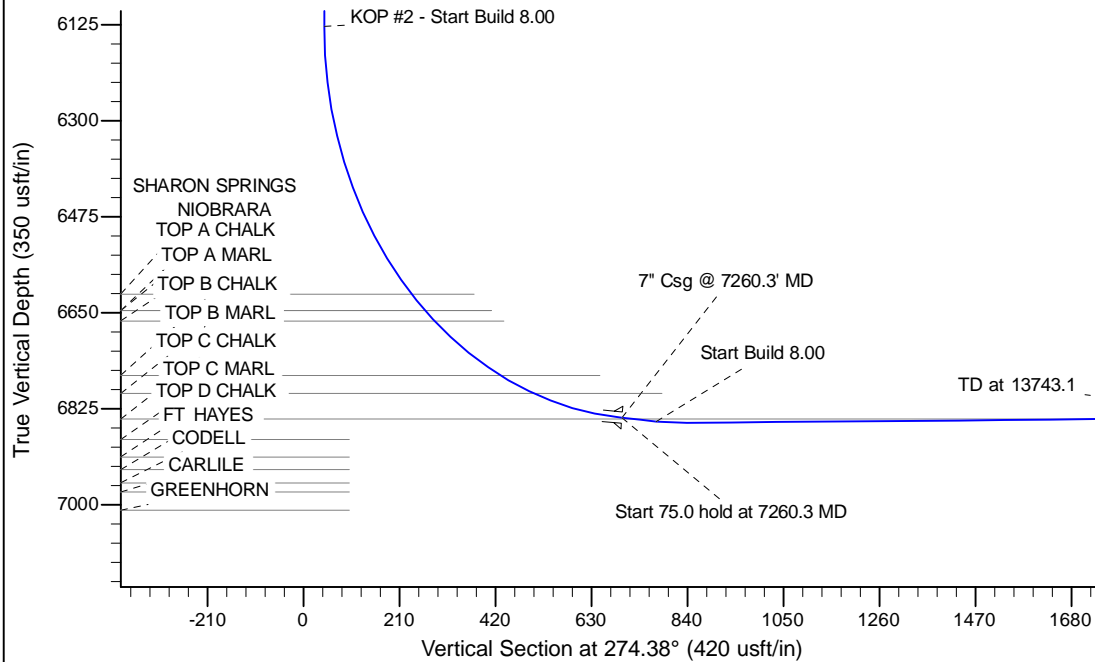
Project: Wattenberg Field
Site: E (Sec.26-T06N-R65W) Weld County, CO
Well: Steadfast E27-63-1HN
Wellbore: Original Drilling
Design: APD - Rev 0

Northern Region Drilling

Geodetic System: US State Plane 1983
Datum: North American Datum 1983
Ellipsoid: GRS 1980
Zone: Colorado Northern Zone
System Datum: Mean Sea Level

SECTION DETAILS

Sec	MD	Inc	Azi	TVD	+N/-S	+E/-W	Dleg	TFace	V Sect	Target
1	0.0	0.00	0.00	0.0	0.0	0.0	0.00	0.00	0.0	
2	1000.0	0.00	0.00	1000.0	0.0	0.0	0.00	0.00	0.0	
3	1749.9	15.00	0.00	1741.4	97.6	0.0	2.00	0.00	7.4	
4	3294.8	15.00	0.00	3233.6	497.4	0.0	0.00	0.00	38.0	
5	4044.7	0.00	0.00	3975.0	595.0	0.0	2.00	180.00	45.4	
6	6197.8	0.00	0.00	6128.1	595.0	0.0	0.00	0.00	45.4	
7	7260.3	85.00	269.61	6841.5	590.5	-653.8	8.00	269.61	696.9	
8	7335.3	85.00	269.61	6848.1	590.0	-728.5	0.00	0.00	771.4	
9	7403.1	90.43	269.61	6850.8	589.5	-796.3	8.00	0.00	838.9	
10	13743.1	90.43	269.61	6803.2	546.1	-7135.9	0.00	0.00	7156.8	Steadfast E27-63-1HN BHL 990'FSL, 2105'FEL



WELL DETAILS: Steadfast E27-63-1HN

Ground Level: 4676.0			
North	East	Latitude	Longitude
0.0	0.0	1408266.21	3244414.54
		40.450770	-104.621750

Plan: APD - Rev 0 (Steadfast E27-63-1HN/Original Drilling)

Created By: Shailey Jewell Date: 15:18, May 06 2013

Checked: _____ Date: _____

Reviewed: _____ Date: _____

Approved: _____ Date: _____