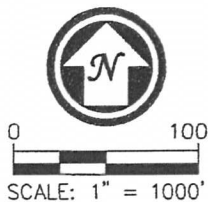
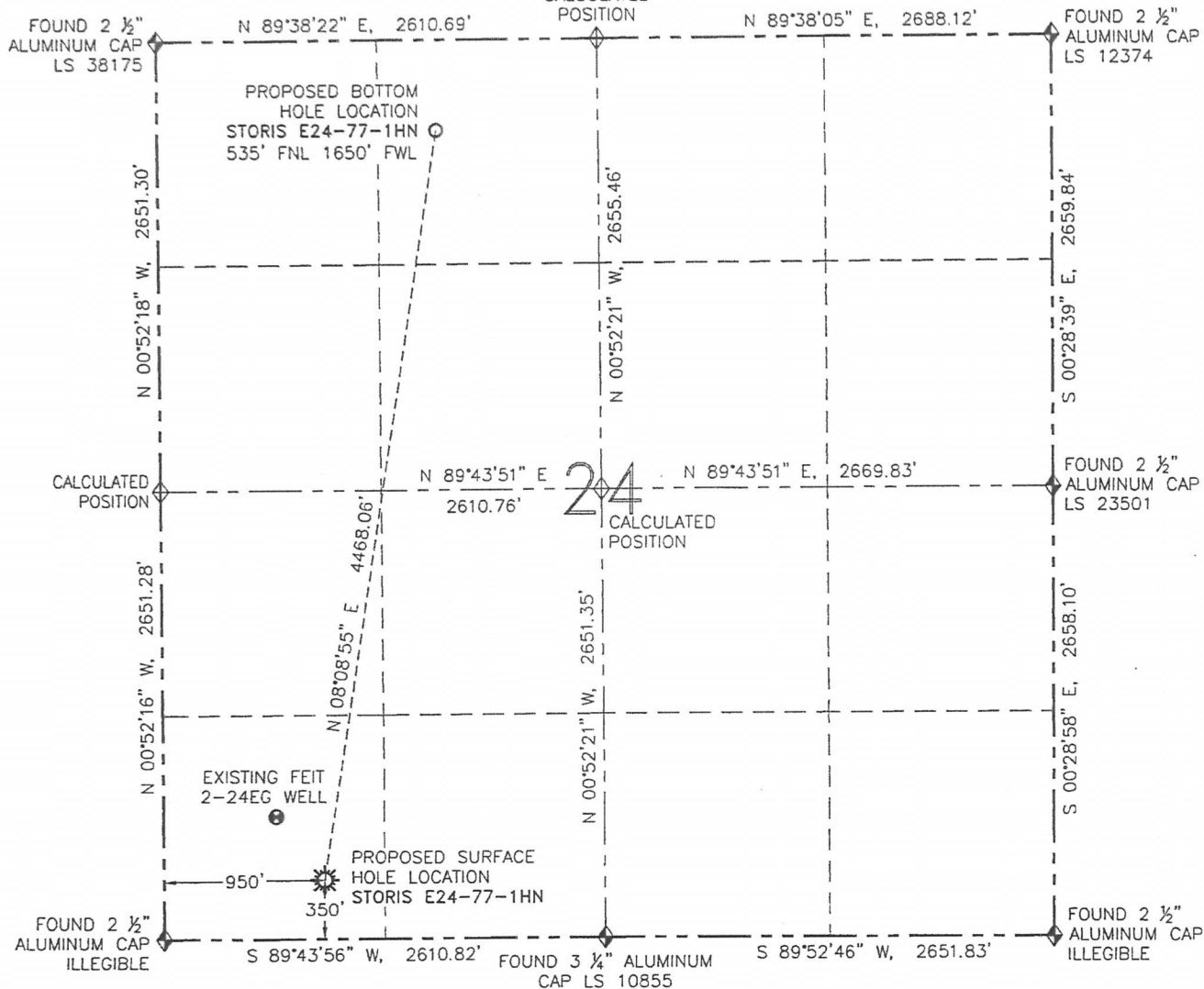


# WELL LOCATION CERTIFICATE

STORIS E24-77-1HN

THIS MAP DOES NOT REPRESENT A BOUNDARY SURVEY

SECTION: 24  
TOWNSHIP: 6 NORTH  
RANGE: 65 WEST



SURFACE HOLE LOCATION NAD 83  
LATITUDE: N 40.46516°  
LONGITUDE: W 104.61740°  
ELEVATION: 4692  
PDOP: 1.7  
1/4-1/4: SW SW  
NEAREST PROPERTY LINE: 350' S

BOTTOM HOLE  
LATITUDE: N 40.47728°  
LONGITUDE: W 104.61497°

IN ACCORDANCE WITH A REQUEST FROM GREG WILSON- NOBLE ENERGY INC., R&R ENGINEERS-SURVEYORS, INC. HAS DETERMINED THE SURFACE HOLE LOCATION OF THE STORIS E24-77-1HN WELL TO BE 350' FSL AND 950' FWL AS MEASURED AT (90) DEGREES FROM THE SECTION LINES OF SECTION 24, TOWNSHIP 6 NORTH, RANGE 65 WEST OF THE 6TH PRINCIPAL MERIDIAN, WELD COUNTY, COLORADO. THE BOTTOM HOLE LOCATION, AS PROVIDED BY THE CLIENT IS TO BE 535' FNL AND 1650' FWL OF SECTION 24, TOWNSHIP 6 NORTH, RANGE 65 WEST.

I HEREBY CERTIFY THAT THIS WELL LOCATION CERTIFICATE WAS PREPARED BY ME, OR UNDER MY DIRECT SUPERVISION, THAT THE FIELD WORK WAS COMPLETED ON 12/28/12, FOR AND ON BEHALF OF NOBLE ENERGY INC., THAT IT IS NOT A LAND SURVEY PLAT OR AN IMPROVEMENT SURVEY PLAT, AND THAT IT IS NOT TO BE RELIED UPON FOR ESTABLISHMENT OF FENCES, BUILDINGS, OR OTHER FUTURE IMPROVEMENT LINES.

## LEGEND

- PROPOSED WELL
- EXISTING WELL
- BOTTOM HOLE
- FOUND MONUMENT
- CALCULATED POSITION

## NOTES:

1. BEARINGS ARE GRID BEARINGS OF THE COLORADO STATE PLANE COORDINATE SYSTEM, NORTH ZONE, NAD 83. THE LINEAL DIMENSIONS SHOWN HEREON ARE BASED UPON THE "U.S. SURVEY FOOT".
2. ELEVATIONS ARE BASED UPON NGS OPUS SOLUTION NAVD 88 DATUM COMPUTED USING GEOID09.
3. THE NEAREST EXISTING WELL IS: FEIT 2-24EG 474' NW.
4. SEE LOCATION DRAWING FOR ALL IMPROVEMENTS WITHIN 400' OF THE OIL/GAS LOCATION.
5. SURFACE USE: CROPLAND.



FIELD DATE: 12/28/12  
PLOT DATE: 03/08/13  
DRAWN BY: CJD  
JOB NO.: NE12383  
SHEET NO.: 1 of 6

## NOTICE:

ACCORDING TO COLORADO LAW, YOU MUST COMMENCE ANY LEGAL ACTION BASED UPON ANY DEFECT IN THIS W.L.C. WITHIN THREE YEARS AFTER YOU FIRST DISCOVER SUCH DEFECT. IN NO EVENT MAY ANY ACTION BASED UPON ANY DEFECT IN THIS W.L.C. BE COMMENCED MORE THAN TEN YEARS FROM THE DATE OF THE CERTIFICATION SHOWN HEREON (13-80-105 C.R.S.).



DAVID C. HOLMES, PLS 32828  
FOR AND ON BEHALF OF R&R ENGINEERS-SURVEYORS, INC.

# SITE SKETCH

STORIS E24-77-1HN

THIS MAP DOES NOT REPRESENT A BOUNDARY SURVEY

SECTION: 24  
TOWNSHIP: 6 NORTH  
RANGE: 65 WEST

① FEIT 2-24EG  
SW/SW SEC. 24  
727' FSL  
667' FWL  
EL=4692'  
N 40.46620°  
W 104.61842°  
PDOP 1.4

② ANDERSON E24-14  
SE/SW SEC. 24  
663' FSL  
1986' FWL  
EL=4688'  
N 40.46600°  
W 104.61368°  
PDOP 2.1

③ ANDERSON E24-12  
NW/SW SEC. 24  
1965' FSL  
660' FWL  
EL=4692'  
N 40.46960°  
W 104.61847°  
PDOP 2.8

④ ANDERSON EG 1-24  
NE/SW SEC. 24  
PER COGCC:  
1980' FSL  
1980' FWL  
DRILLED & ABANDONED

⑤ ANDERSON E24-11  
NE/SW SEC. 24  
1991' FSL  
1962' FWL  
EL=4685'  
N 40.46965°  
W 104.61379°  
PDOP 2.7

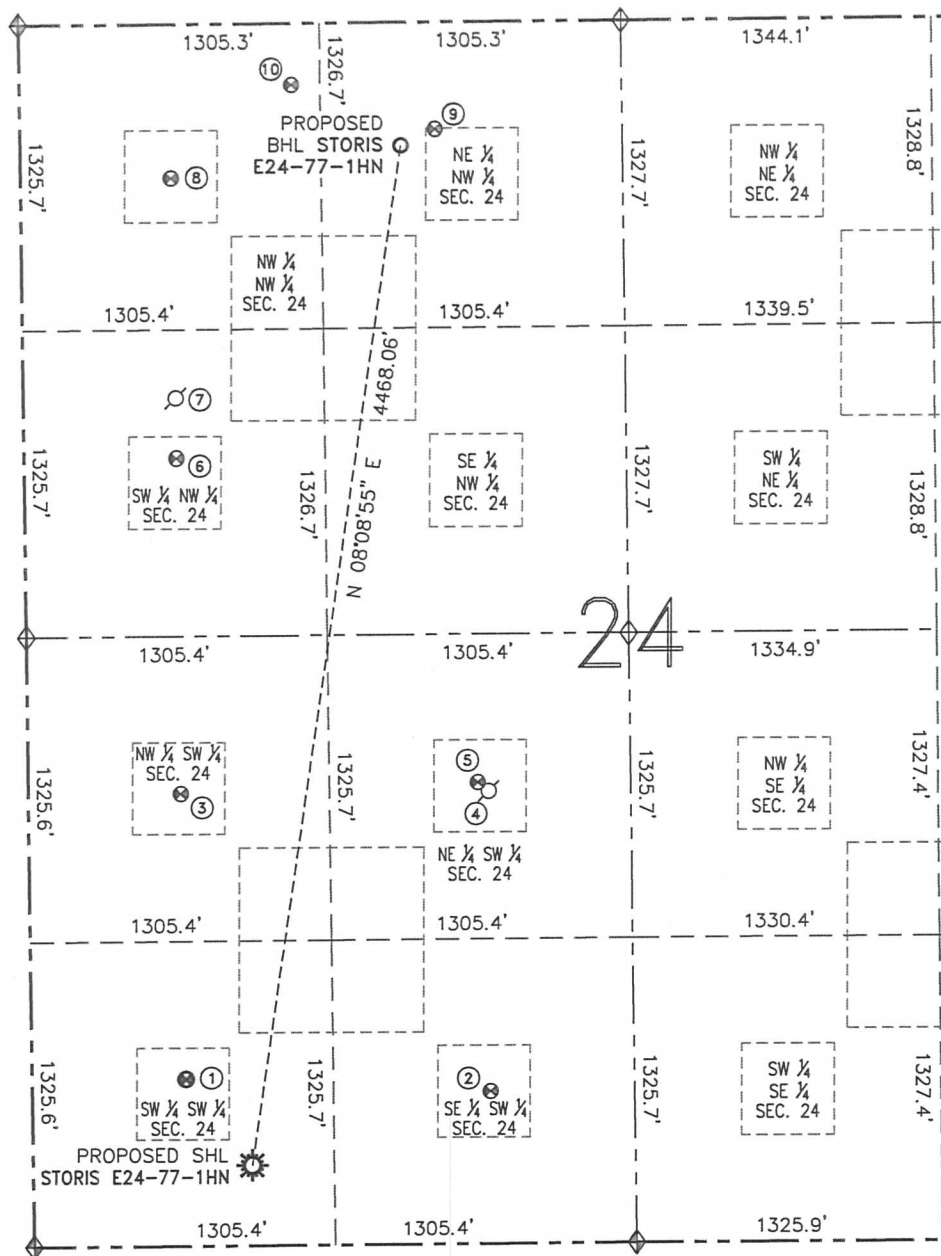
⑥ HERMAN E24-5  
SW/NW SEC. 24  
1882' FNL  
660' FWL  
EL=4693'  
N 40.47359°  
W 104.61850°  
PDOP 1.9

⑦ LENA 24-6P  
SW/NW SEC. 24  
PER COGCC:  
1623' FNL  
660' FWL  
PLUGGED &  
ABANDONED

⑧ OLE 4-24  
NW/NW SEC. 24  
666' FNL  
652' FWL  
EL=4696'  
N 40.47693°  
W 104.61855°  
PDOP 2.0

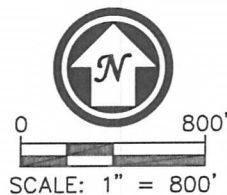
⑨ OLE 21-24  
NE/NW SEC. 24  
464' FNL  
1799' FWL  
EL=4693'  
N 40.47747°  
W 104.61443°  
PDOP 2.0

⑩ WAKE E24-77HN  
NW/NW SEC. 24  
266' FNL  
1180' FWL  
EL=4696'  
N 40.47802°  
W 104.61666°  
PDOP 2.1



- NOTES:
1. THIS SKETCH DOES NOT REPRESENT A BOUNDARY SURVEY.
  2. HORIZONTAL DATUM IS NAD 83.
  3. VERTICAL DATUM IS NAVD 88.

	FIELD DATE: 12/28/12
	PLOT DATE: 03/08/13
	DRAWN BY: CJD
	JOB NO.: NE12383
	SHEET NO.: 2 of 6



LEGEND	
	PROPOSED WELL
	EXISTING WELL
	BOTTOM HOLE
	ABANDONED WELL
	FOUND MONUMENT
	CALCULATED POSITION