

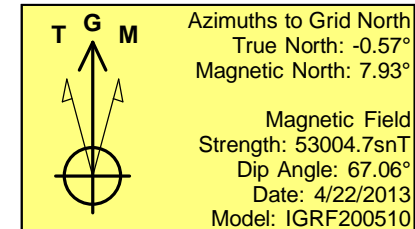
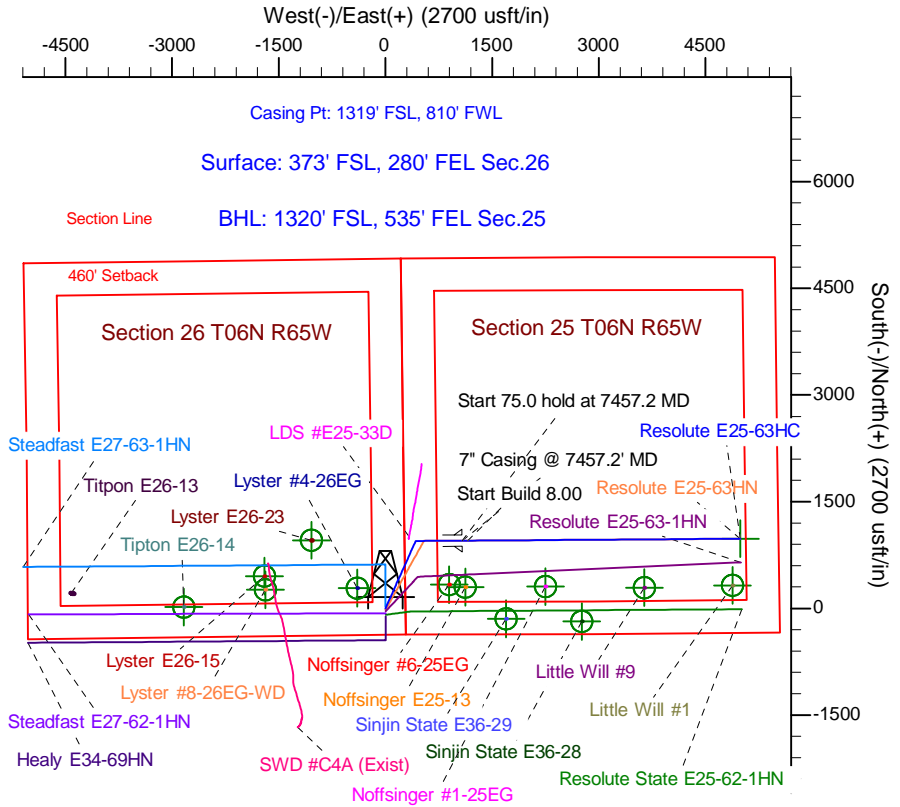
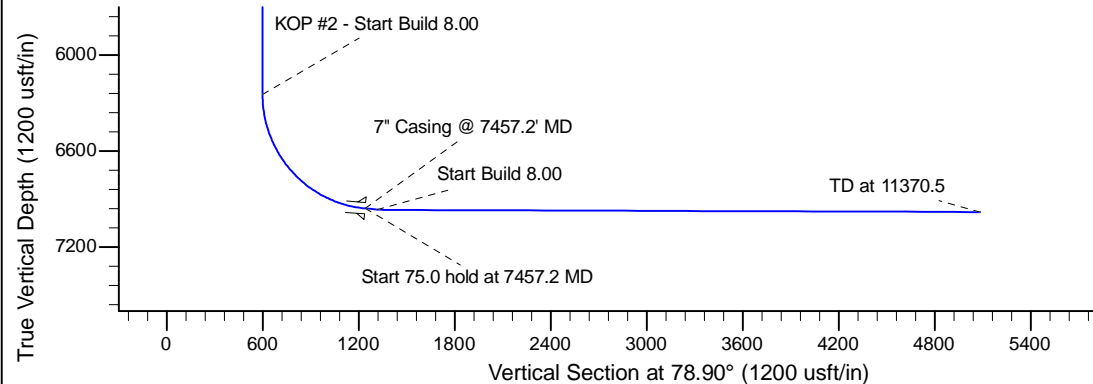
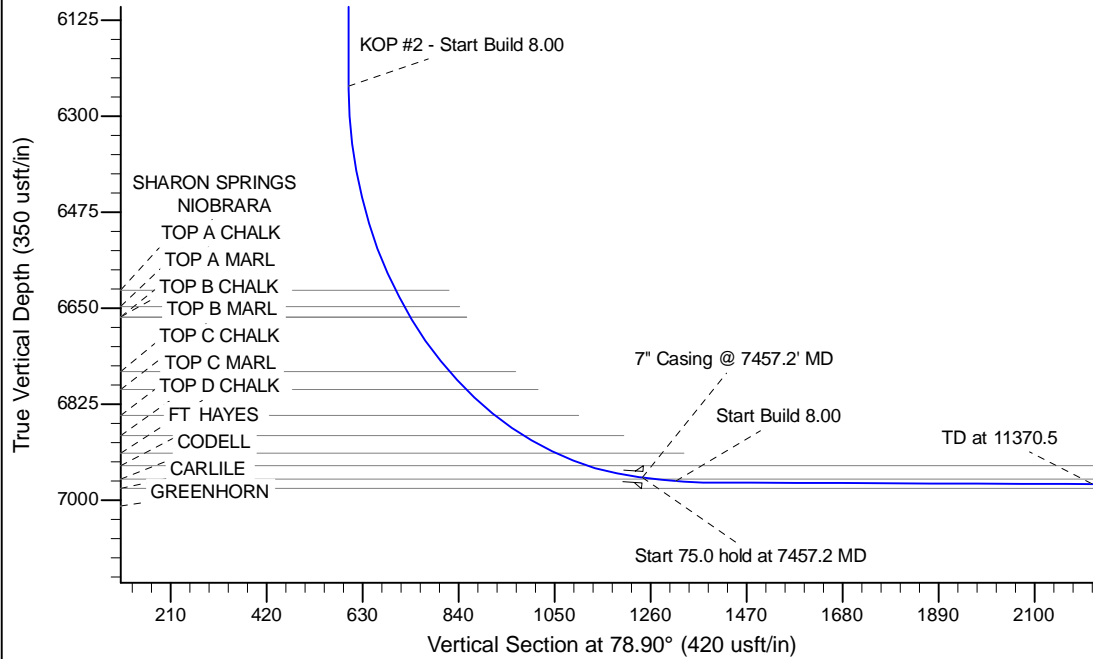
Project: Wattenberg Field
Site: E (Sec.26-T06N-R65W) Weld County, CO
Well: Resolute E25-63HC
Wellbore: Original Drilling
Design: APD - Rev 0

Northern Region Drilling

Geodetic System: US State Plane 1983
Datum: North American Datum 1983
Ellipsoid: GRS 1980
Zone: Colorado Northern Zone
System Datum: Mean Sea Level

SECTION DETAILS

Sec	MD	Inc	Azi	TVD	+N/-S	+E/-W	Dleg	TFace	Vsect	Target
1	0.0	0.00	0.00	0.0	0.0	0.0	0.00	0.00	0.0	
2	1200.0	0.00	0.00	1200.0	0.0	0.0	0.00	0.00	0.0	
3	2102.6	18.05	24.17	2087.7	128.6	57.7	2.00	24.17	81.4	
4	4542.2	18.05	24.17	4407.3	818.4	367.3	0.00	0.00	517.9	
5	5444.8	0.00	0.00	5295.0	947.0	425.0	2.00	180.00	599.3	
6	6394.7	0.00	0.00	6244.9	947.0	425.0	0.00	0.00	599.3	
7	7457.2	85.00	89.60	6958.4	951.6	1078.8	8.00	89.60	1241.7	
8	7532.2	85.00	89.60	6964.9	952.1	1153.5	0.00	0.00	1315.2	
9	7592.2	89.80	89.60	6967.6	952.5	1213.4	8.00	0.00	1374.0	
10	11370.5	89.80	89.60	6980.8	979.0	4991.6	0.00	0.00	5086.7	Resolute E25-63HC BHL 1320'FSL, 535'FEL



WELL DETAILS: Resolute E25-63HC				
Ground Level: 4676.0				
0.0	0.0	Northing	Easting	Latitude
		1408244.36	3244414.76	40.450710
				Longitude
				-104.621750
Plan: APD - Rev 0 (Resolute E25-63HC/Original Drilling)				
Created By: Shailey Jewell		Date: 15:24, May 06 2013		
Checked: _____		Date: _____		
Reviewed: _____		Date: _____		
Approved: _____		Date: _____		