

WELL LOCATION MAP

WICKSTROM 17-1H PAD

07/08
18/17
Alum. Cap
PLS 22097

N 89°29'30" E 5281.07'

08/09
17/16
Alum. Cap
PLS 22097

N 01°17'01" W 5257.60'

17

S 01°12'53" E 5264.88'

18/17
19/20
Alum. Cap
PLS 22097

S 47°02'47" W 1346.33'
(True N (S 47°56'14" W))

S 89°34'17" W 5274.86'

17/16
20/21
Alum. Cap
PLS 7735

Wickstrom 17-4H

Surface Location
250 FSL 1739 FWL
Ground Elev 4671.6
Pad Elev 4670.1
LAT:40.48184
LON:-104.12155

Landing Point

Surface Location
660 FNL 737 FWL

NOTES

SURVEYOR'S STATEMENT

The undersigned hereby states that the well location shown hereon was staked on the ground based on existing monumentation and/or physical evidence found in the field and is correct to the best of my knowledge, information and belief.



North

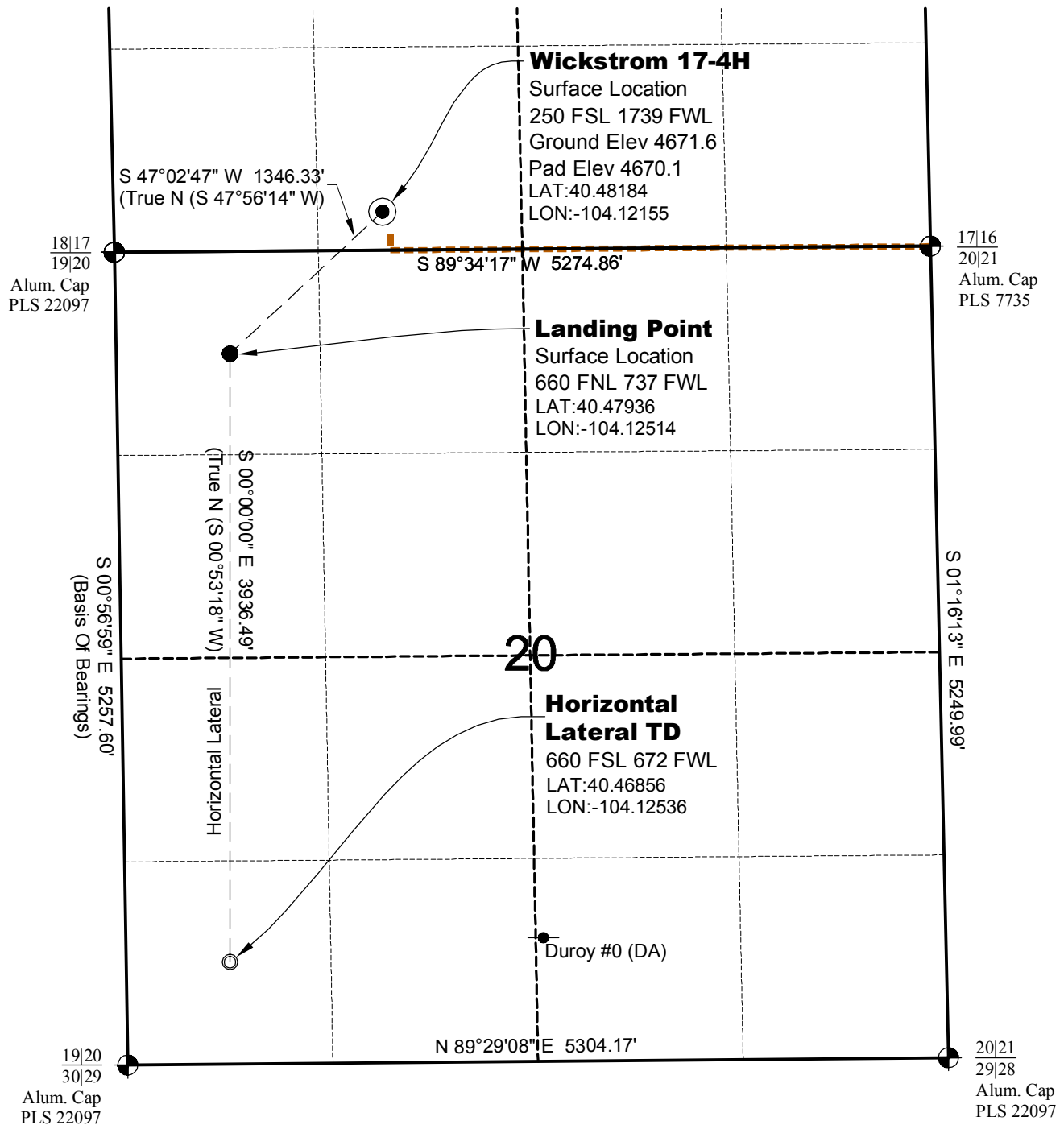
- 1.) Horizontal (NAD 83) and vertical (NAVD 88) datum is based on the Leica Geosystems SmartNet of Colorado.
 - 2.) All directions, distances, and dimensions shown hereon are based on coordinates from the "Colorado coordinate system of 1983 north zone" (article 52 of title 38, C.R.S.).
 - 3.) All section line dimensions shown hereon are based on field measurements of existing monuments and/or physical evidence found in the field unless otherwise indicated.
 - 4.) Physical features shown hereon are for graphical representation only.
 - 5.) See Form 2A for visible improvements within 400' of wellhead.
 - 6.) Distances to nearest section lines are measured perpendicularly.
 - 7.) This is not a land survey nor land survey plat.
 - 8.) Date of Survey 1/23/13; Date of Drawing 7/22/13. REV 0
- PDOP Reading: 2.2 Instrument Operator: Marc Woodard

0 1000 2000
Graphic Scale in Feet
1" = 1000'

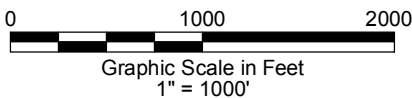
GEO SURV
LAND SURVEYING AND MAPPING
LAFAYETTE - WINTER PARK
Ph 303 666 0379 Fx 303 665 6320

CONDOR ENERGY TECHNOLOGY LLC
WICKSTROM 17-4H
SL SE1/4 SW1/4 SEC. 17 T6N R6W
HL TD SW1/4 SW1/4 SEC. 20 T6N R6W
6th PM MORGAN COUNTY COLORADO

WICKSTROM 17-1H PAD



North



—●— Location Per COGCC. Not field located.



LAND SURVEYING AND MAPPING
LAFAYETTE - WINTER PARK
Ph 303 666 0379 Fx 303 665 6320

CONDOR ENERGY TECHNOLOGY LLC
WICKSTROM 17-4H

SL SE1/4 SW1/4 SEC. 17 T6N R6W
HL TD SW1/4 SW1/4 SEC. 20 T6N R6W
6th PM MORGAN COUNTY COLORADO