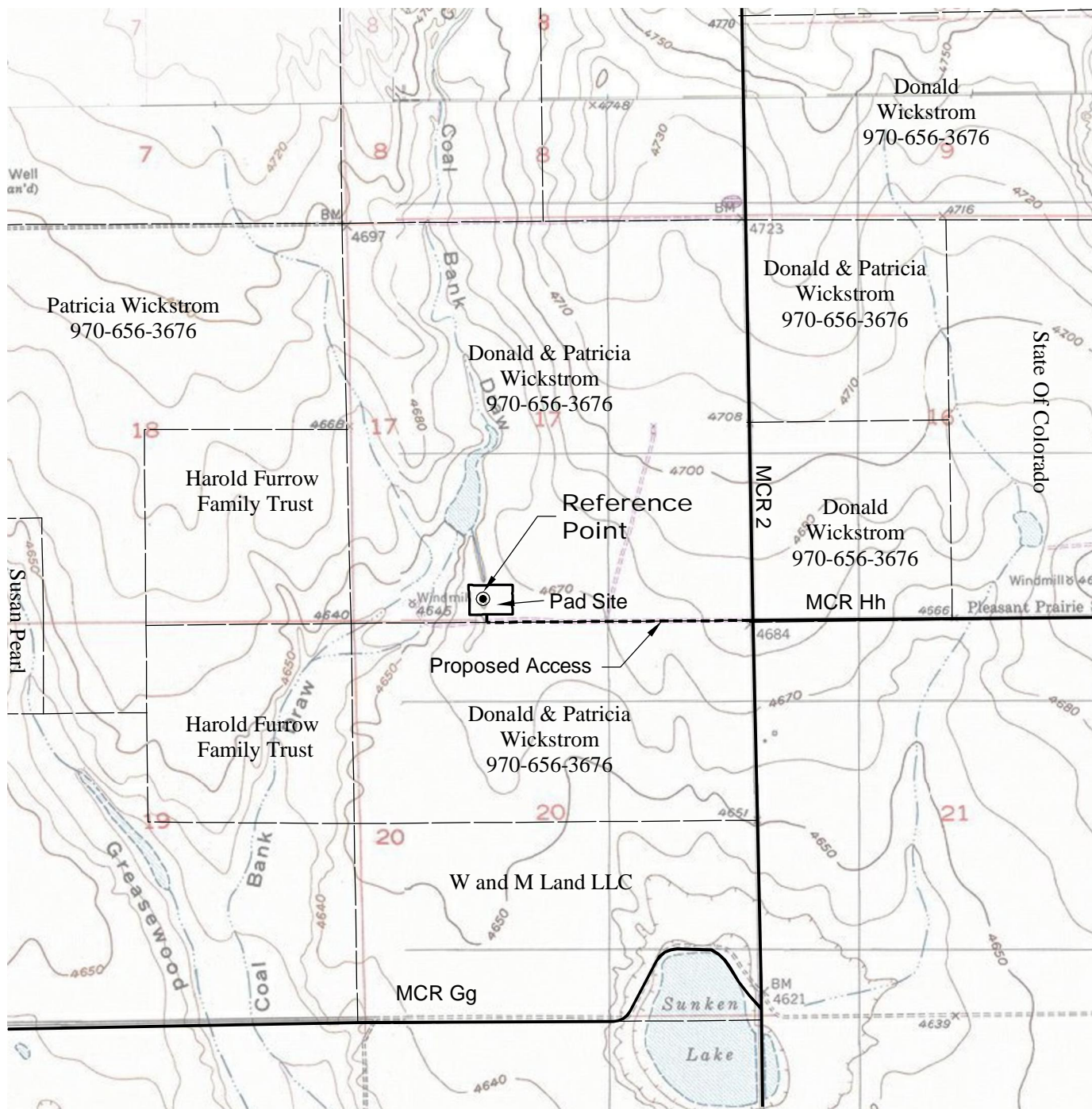


ACCESS ROAD MAP



DRIVING DIRECTIONS:

From Town of Orchard, beginning at intersection of
Washington Ave & MCR X; East on MCR X
MP 0.2 Left on MCR 2
MP 10.3 Left on access to Wickstrom 17-1H Pad
MP 11.0 Right onto Wickstrom 17-1H pad

2/6/13



North



Graphic Scale in Feet
1" = 2000'



LAND SURVEYING AND MAPPING
LAFAYETTE - WINTER PARK
Ph 303 666 0379 Fx 303 665 6320

CONDOR ENERGY TECHNOLOGY LLC
WICKSTROM 17-1H PAD

SE1/4 SW1/4 SECTION 17 T6N R60W
6th PM MORGAN COUNTY COLORADO