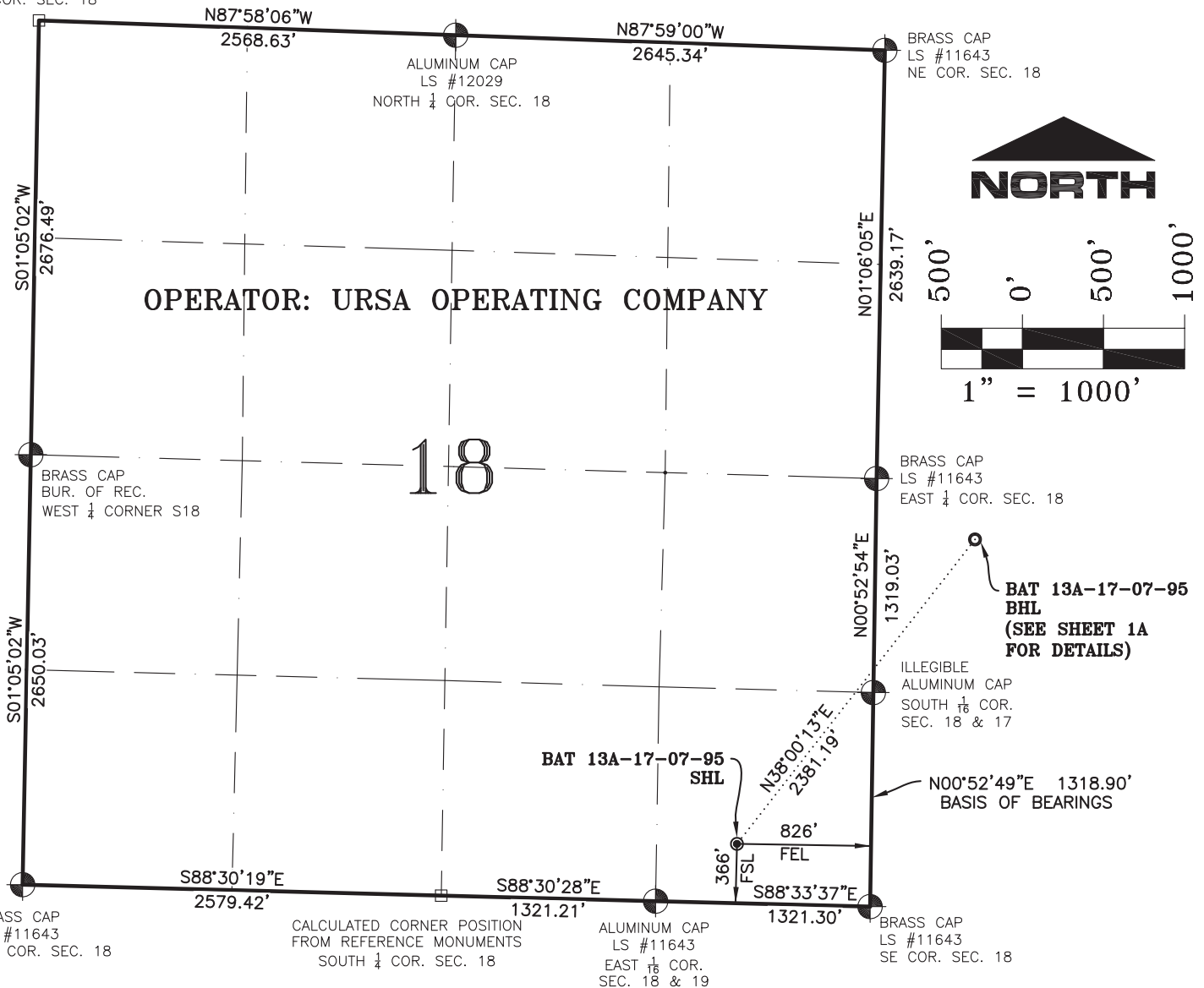


SECTION 18, T7S, R95W, 6th P.M.

CALCULATED POSITION
NW COR. SEC. 18



NOTES:

1. GEODETIC POSITIONS ARE SHOWN IN DECIMAL DEGREES.
2. UNITS OF LINEAR MEASUREMENT: U.S. SURVEY FOOT
3. ELEVATIONS ARE BASED ON GPS OBSERVATIONS USING GEOID 03, NAVD88.
4. ALL SURFACE (SHL) AND BOTTOM (BHL) HOLE LOCATIONS ARE MEASURED AT 90° ANGLES FROM SECTION LINES.
5. BASIS OF BEARING: N00°52'49"E BETWEEN FOUND MONUMENTS AS SHOWN HEREON.
6. EXISTING GROUND ELEVATION: 5441'. PROPOSED PAD ELEVATION: 5441.2'.
7. GPS OPERATOR: KYLE TESKY OBSERVED AN AVERAGE PDOP OF ≤ 3.0 FOR ALL SURVEY MEASUREMENTS DEPICTED ON THIS AND SUBSEQUENT SHEETS.
8. ALL GPS OBSERVATIONS ARE IN COMPLIANCE WITH COGCC RULE NO. 215
9. SURFACE USE: AGRICULTURAL LANDS
10. USGS QUAD MAP: PARACHUTE

SURVEYORS STATEMENT:

I, STEPHEN L. EHLERS, BEING A REGISTERED LAND SURVEYOR IN THE STATE OF COLORADO, DO HEREBY CERTIFY THAT THIS PLAT REPRESENTS A SURVEY PERFORMED BY ME OR UNDER MY DIRECT SUPERVISION SEPTEMBER 17, 2010 AND IS TRUE TO THE BEST OF MY KNOWLEDGE AND BELIEF.

Stephen L. Ehlers

20133

16 JULY, 2013

STEPHEN L. EHLERS
COLORADO LS 20133

DATE

WELL No.	SECTION LINES TIES		NAD 83		NAD 27	
BAT 13A-17-07-95	FOOTAGES	FOOTAGES	LATITUDE	LONGITUDE	LATITUDE	LONGITUDE
SURFACE HOLE (SHL)	366' FSL	826' FEL	39.431428°	-108.033256°	39.431450°	-108.032626°
BOTTOM HOLE (BHL)	2276' FSL	611' FWL	39.436688°	-108.028253°	39.436710°	-108.027623°



118 West Sixth Street, Suite 200
Glenwood Springs, CO 81601
970.945.1004 www.sgm-inc.com

Scale: 1" = 1000'

Sheet 1 of 1A

WLP

WELL LOCATION PLAT - URSA BAT 13A-17-07-95

SHL LOCATED IN SE1/4SE1/4 SECT.; 18, T. 7 S., R. 95 W., 6TH P.M., GARFIELD COUNTY, CO

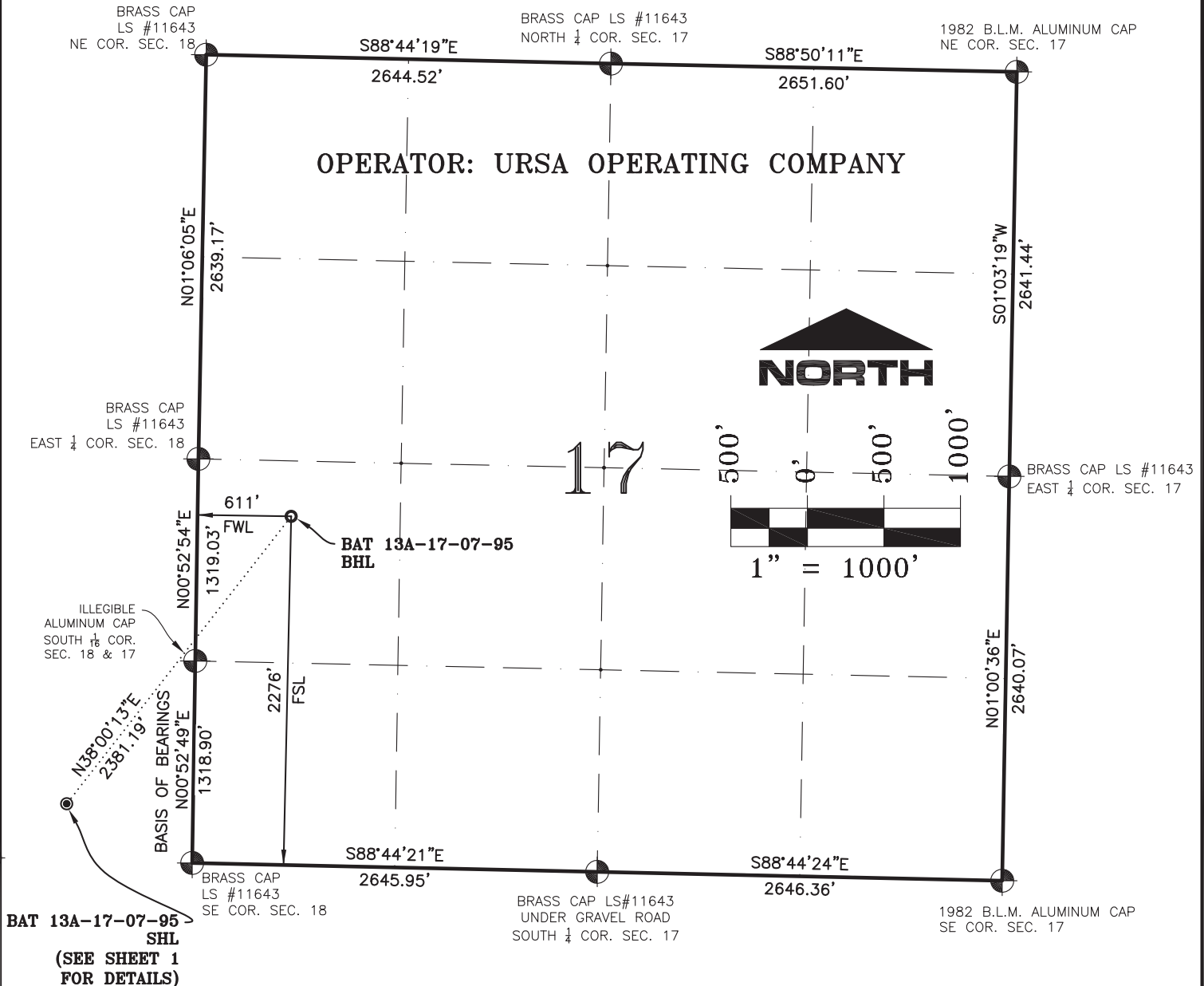
Job# 2013-413.001

Date: 7.15.13

By: REB

File: MonRidUrsa

SECTION 17, T7S, R95W, 6th P.M.



NOTES:

1. GEODETIC POSITIONS ARE SHOWN IN DECIMAL DEGREES.
2. UNITS OF LINEAR MEASUREMENT: U.S. SURVEY FOOT
3. ELEVATIONS ARE BASED ON GPS OBSERVATIONS USING GEOID 03, NAVD88.
4. ALL SURFACE (SHL) AND BOTTOM (BHL) HOLE LOCATIONS ARE MEASURED AT 90° ANGLES FROM SECTION LINES.
5. BASIS OF BEARING: N00°52'49"E BETWEEN FOUND MONUMENTS AS SHOWN HEREON.
6. EXISTING GROUND ELEVATION: 5441'. PROPOSED PAD ELEVATION: 5441.2'.
7. GPS OPERATOR: KYLE TESKY OBSERVED AN AVERAGE PDOP OF ≤ 3.0 FOR ALL SURVEY MEASUREMENTS DEPICTED ON THIS AND SUBSEQUENT SHEETS. ALL GPS OBSERVATIONS ARE IN COMPLIANCE WITH COGCC RULE NO. 215
8. SURFACE USE: AGRICULTURAL LANDS
9. USGS QUAD MAP: PARACHUTE

SURVEYORS STATEMENT:

I, STEPHEN L. EHLERS, BEING A REGISTERED LAND SURVEYOR IN THE STATE OF COLORADO, DO HEREBY CERTIFY THAT THIS PLAT REPRESENTS A SURVEY PERFORMED BY ME OR UNDER MY DIRECT SUPERVISION SEPTEMBER 17, 2010 AND IS TRUE TO THE BEST OF MY KNOWLEDGE AND BELIEF. 20133

Stephen L. Ehlers
STEPHEN L. EHLERS
COLORADO LS 20133
16 JULY, 2013
DATE

WELL No.	SECTION LINES TIES		NAD 83		NAD 27	
BAT 13A-17-07-95	FOOTAGES	FOOTAGES	LATITUDE	LONGITUDE	LATITUDE	LONGITUDE
SURFACE HOLE (SHL)	366' FSL	826' FEL	39.431428°	-108.033256°	39.431450°	-108.032626°
BOTTOM HOLE (BHL)	2276' FSL	611' FWL	39.436688°	-108.028253°	39.436710°	-108.027623°



118 West Sixth Street, Suite 200
Glenwood Springs, CO 81601
970.945.1004 www.sgm-inc.com

Scale: 1" = 1000'

Sheet 1A of 1A

WLP

WELL LOCATION PLAT - URSA BAT 13A-17-07-95

BHL LOCATED IN NW1/4SW1/4 SECTION 17, T. 7 S., R 95 W., 6TH P.M., GARFIELD COUNTY, CO

Job# 2013-413.001 Date: 7.15.13 By: REB File: MonRidUrsa