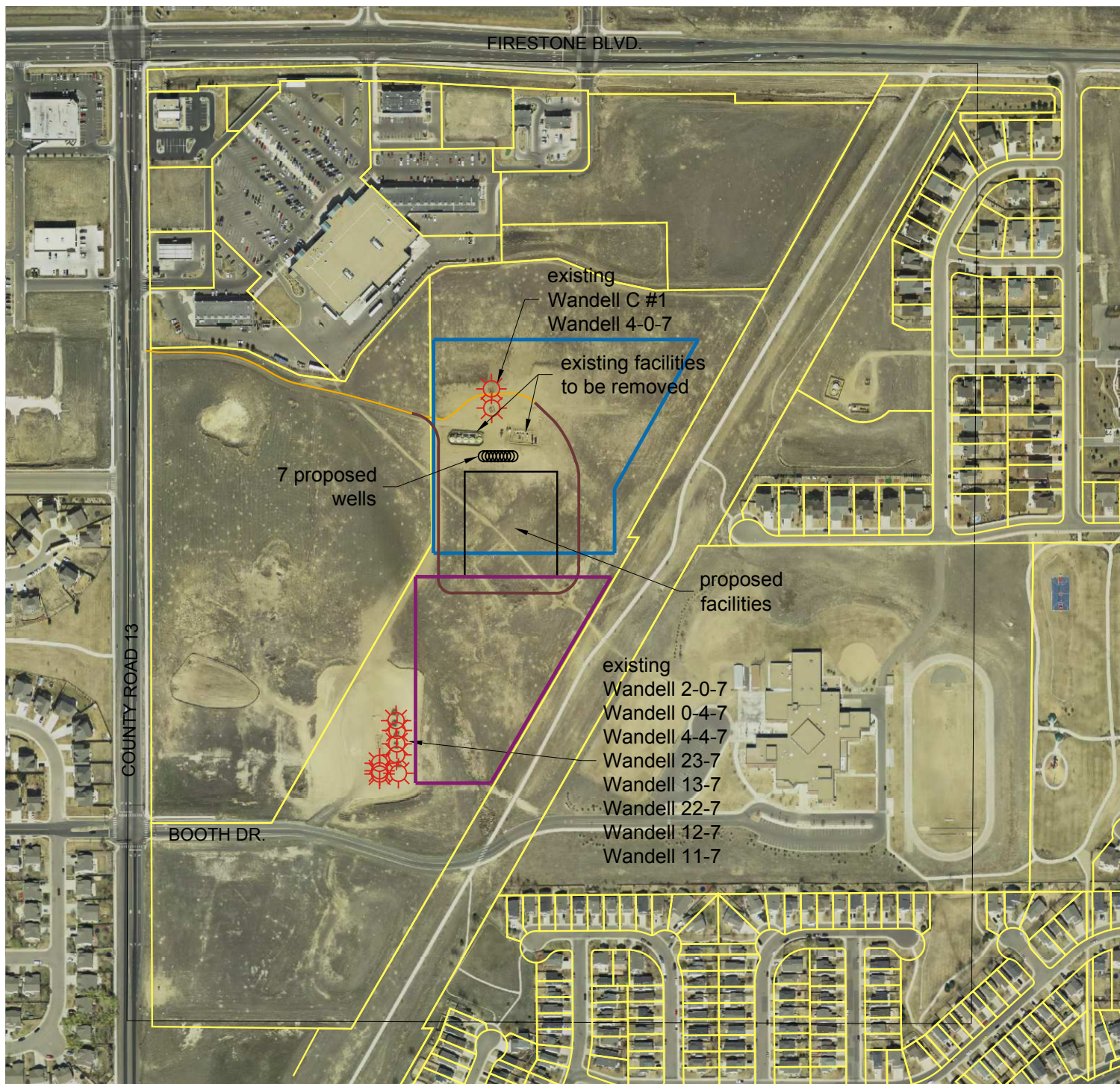


# EXHIBIT "B"



- PROPOSED ACCESS
- EXISTING ACCESS
- PARCEL
- DRILL PAD  
8.0 ACRES TEMPORARY DISTURBANCE
- FACILITIES AREA  
5.0 ACRES PERMANENT DISTURBANCE
- COMPLETIONS AREA  
4.0 ACRES TEMPORARY DISTURBANCE



TOWNSHIP 2 NORTH, RANGE 67 WEST

SECTION 7: NW¼

WELD COUNTY, COLORADO

SCALE: 1" = 400'

JUNE 6, 2013