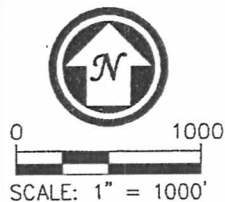
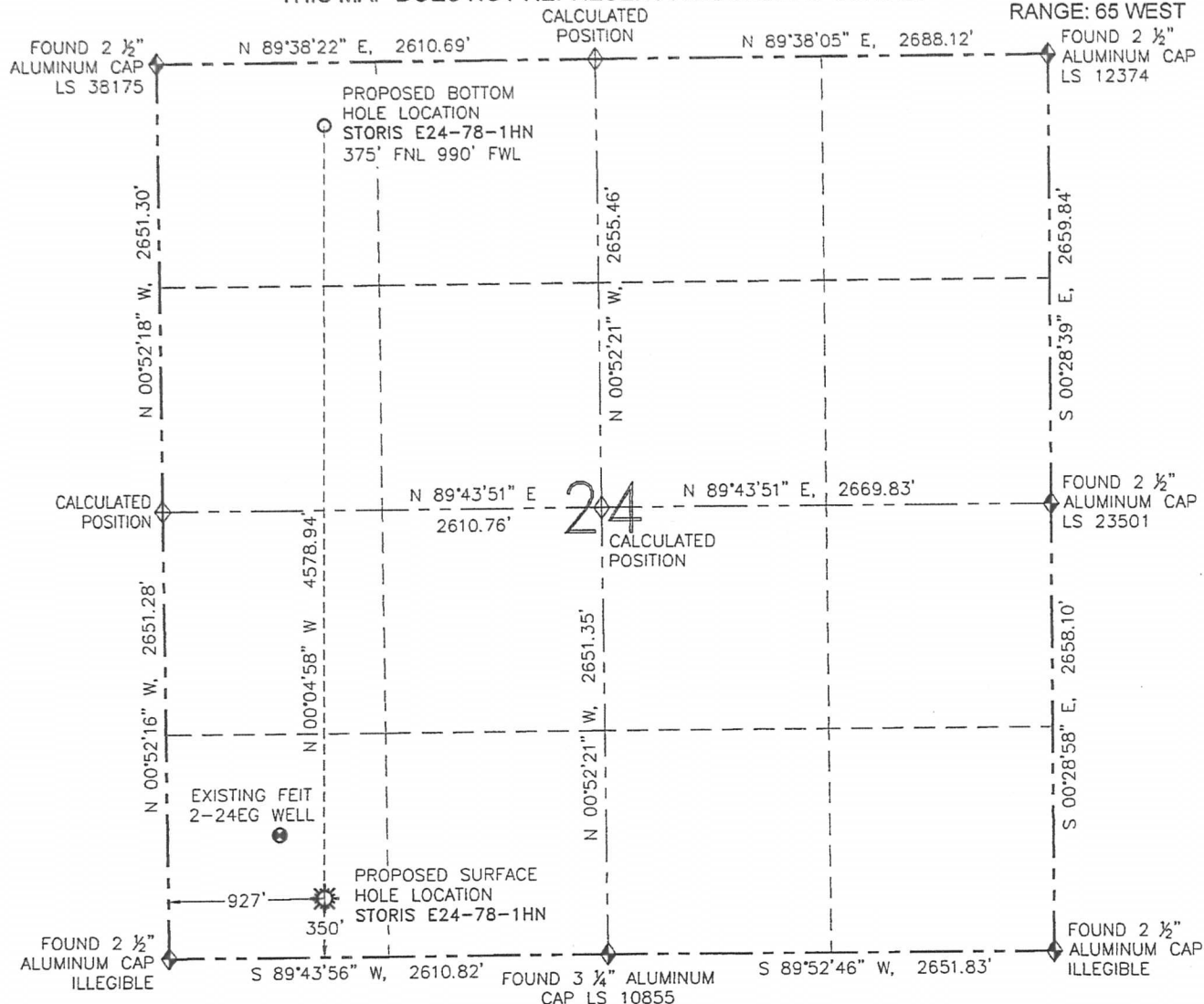


WELL LOCATION CERTIFICATE

STORIS E24-78-1HN

THIS MAP DOES NOT REPRESENT A BOUNDARY SURVEY

SECTION: 24
TOWNSHIP: 6 NORTH
RANGE: 65 WEST



SURFACE HOLE LOCATION NAD 83
LATITUDE: N 40.46516°
LONGITUDE: W 104.61748°
ELEVATION: 4692
PDOP: 1.7
1/4-1/4 SW
NEAREST PROPERTY LINE: 350' S

BOTTOM HOLE
LATITUDE: N 40.47773°
LONGITUDE: W 104.61734°

IN ACCORDANCE WITH A REQUEST FROM GREG WILSON-NOBLE ENERGY INC., R&R ENGINEERS-SURVEYORS, INC. HAS DETERMINED THE SURFACE HOLE LOCATION OF THE STORIS E24-78-1HN WELL TO BE 350' FSL AND 927' FWL AS MEASURED AT (90) DEGREES FROM THE SECTION LINES OF SECTION 24, TOWNSHIP 6 NORTH, RANGE 65 WEST OF THE 6TH PRINCIPAL MERIDIAN, WELD COUNTY, COLORADO. THE BOTTOM HOLE LOCATION, AS PROVIDED BY THE CLIENT IS TO BE 375' FNL AND 990' FWL OF SECTION 24, TOWNSHIP 6 NORTH, RANGE 65 WEST.

I HEREBY CERTIFY THAT THIS WELL LOCATION CERTIFICATE WAS PREPARED BY ME, OR UNDER MY DIRECT SUPERVISION, THAT THE FIELD WORK WAS COMPLETED ON 12/28/12, FOR AND ON BEHALF OF NOBLE ENERGY INC., THAT IT IS NOT A LAND SURVEY PLAT OR AN IMPROVEMENT SURVEY PLAT, AND THAT IT IS NOT TO BE RELIED UPON FOR ESTABLISHMENT OF FENCES, BUILDINGS, OR OTHER FUTURE IMPROVEMENT LINES.

- LEGEND**
- PROPOSED WELL
 - EXISTING WELL
 - BOTTOM HOLE
 - FOUND MONUMENT
 - CALCULATED POSITION

- NOTES:**
1. BEARINGS ARE GRID BEARINGS OF THE COLORADO STATE PLANE COORDINATE SYSTEM, NORTH ZONE, NAD 83. THE LINEAL DIMENSIONS SHOWN HEREON ARE BASED UPON THE "U.S. SURVEY FOOT".
 2. ELEVATIONS ARE BASED UPON NGS OPUS SOLUTION NAVD 88 DATUM COMPUTED USING GEIOD09.
 3. THE NEAREST EXISTING WELL IS: FEIT 2-24EG 461' NW.
 4. SEE LOCATION DRAWING FOR ALL IMPROVEMENTS WITHIN 400' OF THE OIL/GAS LOCATION.
 5. SURFACE USE: CROPLAND.



FIELD DATE: 12/28/12
PLOT DATE: 03/08/13
DRAWN BY: CJD
JOB NO.: NE12383
SHEET NO.: 1 of 6

NOTICE:
ACCORDING TO COLORADO LAW, YOU MUST COMMENCE ANY LEGAL ACTION BASED UPON ANY DEFECT IN THIS W.L.C. WITHIN THREE YEARS AFTER YOU FIRST DISCOVER SUCH DEFECT. IN NO EVENT MAY ANY ACTION BASED UPON ANY DEFECT IN THIS W.L.C. BE COMMENCED MORE THAN TEN YEARS FROM THE DATE OF THE CERTIFICATION SHOWN HEREON (13-80-105 C.R.S.).



DAVID C. HOLMES, PLS 32828
FOR AND ON BEHALF OF R&R ENGINEERS-SURVEYORS, INC.

SITE SKETCH

STORIS E24-78-1HN

THIS MAP DOES NOT REPRESENT A BOUNDARY SURVEY

SECTION: 24

TOWNSHIP: 6 NORTH

RANGE: 65 WEST

① FEIT 2-24EG
SW/SW SEC. 24
727' FSL
667' FWL
EL=4692'
N 40.46620°
W 104.61842°
PDOP 1.4

⑧ OLE 4-24
NW/NW SEC. 24
666' FNL
652' FWL
EL=4696'
N 40.47693°
W 104.61855°
PDOP 2.0

② ANDERSON E24-14
SE/SW SEC. 24
663' FSL
1986' FWL
EL=4688'
N 40.46600°
W 104.61368°
PDOP 2.1

⑨ OLE 21-24
NE/NW SEC. 24
464' FNL
1799' FWL
EL=4693'
N 40.47747°
W 104.61443°
PDOP 2.0

③ ANDERSON E24-12
NW/SW SEC. 24
1965' FSL
660' FWL
EL=4692'
N 40.46960°
W 104.61847°
PDOP 2.8

⑩ WAKE E24-77HN
NW/NW SEC. 24
266' FNL
1180' FWL
EL=4696'
N 40.47802°
W 104.61666°
PDOP 2.1

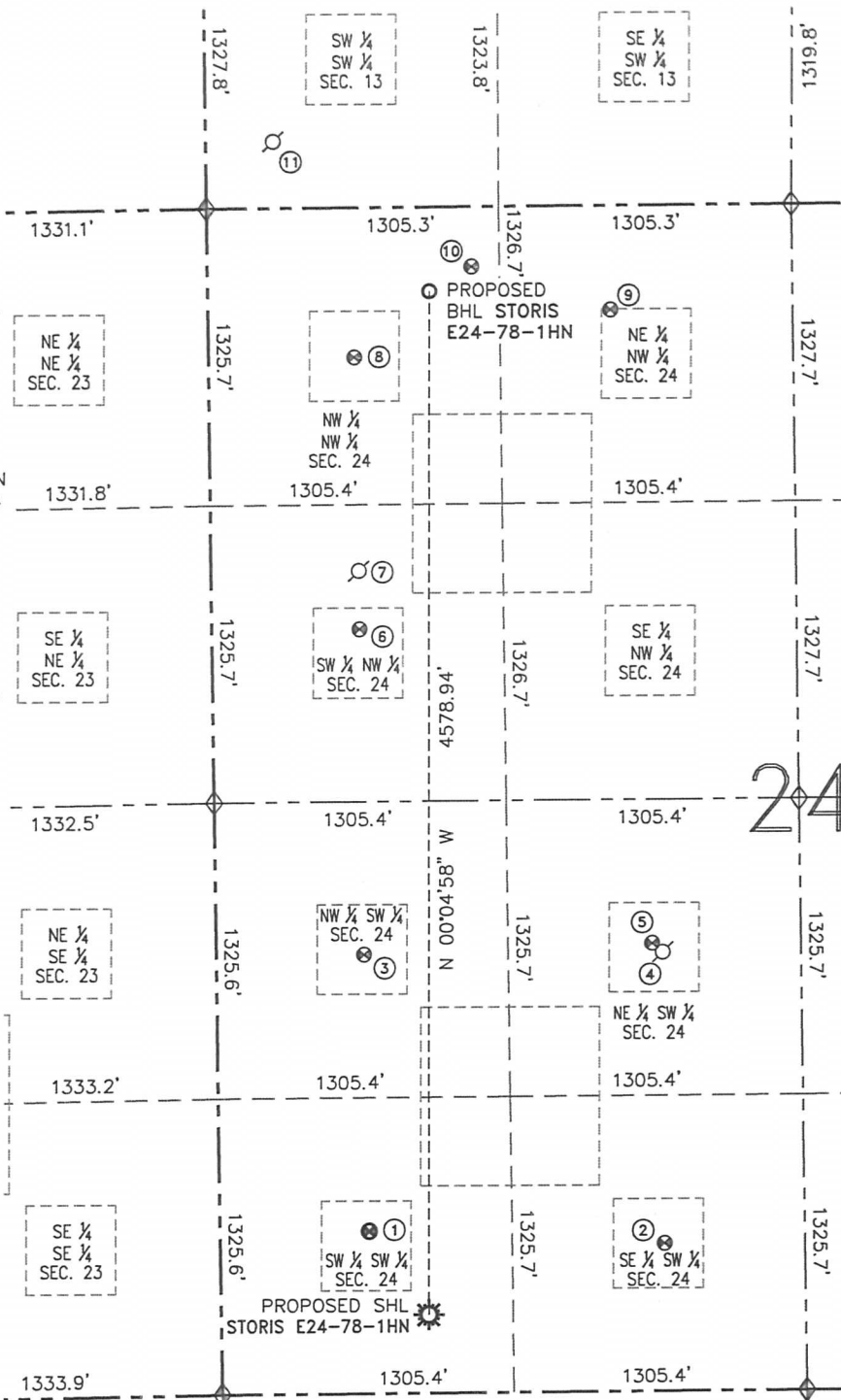
④ ANDERSON EG 1-24
NE/SW SEC. 24
PER COGCC:
1980' FSL
1980' FWL
DRILLED &
ABANDONED

⑪ DINNER 13-13
SW/SW SEC. 13
PER COGCC:
300' FSL
300' FWL
PLUGGED &
ABANDONED

⑤ ANDERSON E24-11
NE/SW SEC. 24
1991' FSL
1962' FWL
EL=4685'
N 40.46965°
W 104.61379°
PDOP 2.7

⑥ HERMAN E24-5
SW/NW SEC. 24
1882' FNL
660' FWL
EL=4693'
N 40.47359°
W 104.61850°
PDOP 1.9

⑦ LENA 24-6P
SW/NW SEC. 24
PER COGCC:
1623' FNL
660' FWL
PLUGGED &
ABANDONED



FIELD DATE: 12/28/12

PLOT DATE: 03/08/13

DRAWN BY: CJD

JOB NO.: NE12383

SHEET NO.: 2 of 6



0 800'
SCALE: 1" = 800'

NOTES:

1. THIS SKETCH DOES NOT REPRESENT A BOUNDARY SURVEY.
2. HORIZONTAL DATUM IS NAD 83.
3. VERTICAL DATUM IS NAVD 88.

LEGEND

- PROPOSED WELL
- EXISTING WELL
- BOTTOM HOLE
- ABANDONED WELL
- FOUND MONUMENT
- CALCULATED POSITION