

The Road to Excellence Starts with Safety

Sold To #: 300721	Ship To #: 2994326	Quote #:	Sales Order #: 900384888
Customer: WPX ENERGY ROCKY MOUNTAIN LLC-EBUS	Customer Rep: Hartl, Al		
Well Name: RWF	Well #: 333-36	API/UWI #: 05-045-21547	
Field: RULISON	City (SAP): RIFLE	County/Parish: Garfield	State: Colorado
Lat: N 39.482 deg. OR N 39 deg. 28 min. 56.586 secs.	Long: W 107.836 deg. OR W -108 deg. 9 min. 50.789 secs.		
Contractor: Nabors Industries LTD.	Rig/Platform Name/Num: Nabors 576		
Job Purpose: Cement Surface Casing			
Well Type: Development Well	Job Type: Cement Surface Casing		
Sales Person: MAYO, MARK	Srvc Supervisor: CASTILLO, FRANCISCO	MBU ID Emp #: 513620	

Job Personnel

HES Emp Name	Exp Hrs	Emp #	HES Emp Name	Exp Hrs	Emp #	HES Emp Name	Exp Hrs	Emp #
CASTILLO, FRANCISCO P	6	513620	CASTILLO, FRANCISCO P	6	513620	KAMMEIER, CHRISTOPHER Michael	6	524554
SINCLAIR, DAN J	6	338784						

Equipment

HES Unit #	Distance-1 way	HES Unit #	Distance-1 way	HES Unit #	Distance-1 way	HES Unit #	Distance-1 way
10567589C	60 mile	10867531	60 mile	10989685	60 mile	11259881	60 mile
11808831	60 mile						

Job Hours

Date	On Location Hours	Operating Hours	Date	On Location Hours	Operating Hours	Date	On Location Hours	Operating Hours
4/24/13	6	1						

TOTAL Total is the sum of each column separately

Job						Job Times			
Formation Name							Date	Time	Time Zone
Formation Depth (MD)	Top	SURFACE		Bottom	1135	Called Out	23 – Apr - 2013	22:00	MST
Form Type			BHST			On Location	24 - Apr - 2013	02:30	MST
Job depth MD	1135. ft		Job Depth TVD		1135. ft	Job Started	24 - Apr - 2013	06:05	MST
Water Depth			Wk Ht Above Floor		3. ft	Job Completed	24 - Apr - 2013	07:00	MST
Perforation Depth (MD)	From			To		Departed Loc	24 - Apr - 2013	08:30	MST

Well Data

Description	New / Used	Max pressure psig	Size in	ID in	Weight lbm/ft	Thread	Grade	Top MD ft	Bottom MD ft	Top TVD ft	Bottom TVD ft
13 1/2" Open Hole				13.5				.	1120.		
9 5/8" Surface Casing	New		9.625	9.001	32.3		H-40	.	1120.		

Tools and Accessories

Type	Size	Qty	Make	Depth	Type	Size	Qty	Make	Depth	Type	Size	Qty	Make
Guide Shoe	9.625	1	WTF	1117.75	Packer					Top Plug	9.625	1	HES
Float Shoe					Bridge Plug					Bottom Plug			
Float Collar	9.625	1	WTF	1073.75	Retainer					SSR plug set			
Insert Float										Plug Container	9.625	1	HES
Stage Tool										Centralizers	9.625	30	WTF

Miscellaneous Materials

Gelling Agt	Conc	Surfactant	Conc	Acid Type	Qty	Conc	%
Treatment Fld	Conc	Inhibitor	Conc	Sand Type	Size	Qty	

Fluid Data

Stage/Plug #: 1

Fluid #	Stage Type	Fluid Name	Qty	Qty uom	Mixing Density lbm/gal	Yield ft ³ /sk	Mix Fluid Gal/sk	Rate bbl/min	Total Mix Fluid Gal/sk
1	Fresh Water Spacer		20.00	bbl	.	.0	.0	4	
2	VersaCemGJ1 Lead Cement	VERSACEM (TM) SYSTEM (452010)	160.0	sacks	12.3	2.38	13.75	7	13.75
		13.75 Gal	FRESH WATER						
3	VersaCemGJ1 Tail Cement	VERSACEM (TM) SYSTEM (452010)	160.0	sacks	12.8	2.11	11.75	7	11.75
		11.75 Gal	FRESH WATER						
4	Fresh Water Displacement		85.00	bbl	.	.0	.0	10	
Calculated Values		Pressures		Volumes					
Displacement	85	Shut In: Instant		Lost Returns	NONE	Cement Slurry	128	Pad	
Top Of Cement	SURFACE	5 Min		Cement Returns	24	Actual Displacement	855	Treatment	
Frac Gradient		15 Min		Spacers	20	Load and Breakdown		Total Job	233
Rates									
Circulating	RIG	Mixing	7	Displacement	10	Avg. Job	7		
Cement Left In Pipe	Amount	44 ft	Reason	Shoe Joint					
Frac Ring # 1 @	ID	Frac ring # 2 @	ID	Frac Ring # 3 @	ID	Frac Ring # 4 @	ID		
The Information Stated Herein Is Correct				Customer Representative Signature					

The Road to Excellence Starts with Safety

Sold To #: 300721		Ship To #: 2994326		Quote #:		Sales Order #: 900384888	
Customer: WPX ENERGY ROCKY MOUNTAIN LLC-EBUS				Customer Rep: Hartl, Al			
Well Name: RWF			Well #: 333-36			API/UWI #: 05-045-21547	
Field: RULISON		City (SAP): RIFLE		County/Parish: Garfield		State: Colorado	
Legal Description:							
Lat: N 39.482 deg. OR N 39 deg. 28 min. 56.586 secs.				Long: W 107.836 deg. OR W -108 deg. 9 min. 50.789 secs.			
Contractor: Nabors Industries LTD.			Rig/Platform Name/Num: Nabors 576				
Job Purpose: Cement Surface Casing					Ticket Amount:		
Well Type: Development Well			Job Type: Cement Surface Casing				
Sales Person: MAYO, MARK			Srv Supervisor: CASTILLO, FRANCISCO			MBU ID Emp #: 513620	

Activity Description	Date/Time	Cht #	Rate bbl/min	Volume bbl		Pressure psig		Comments
				Stage	Total	Tubing	Casing	
Pre-Convoy Safety Meeting	04/24/2013 00:20							ALL HES PERSONEL
Crew Leave Yard	04/24/2013 00:30							
Arrive At Loc	04/24/2013 02:30							DRILLING RIG WAS GETTING READY TO START RUNING CASING/RIG BEGAN TO RUN CASING AT 03:00 HRS
Assessment Of Location Safety Meeting	04/24/2013 02:50							ALL HES PERSONEL
Pre-Job Safety Meeting	04/24/2013 05:55							ALL HES PERSONEL AND RIG CREW
Start Job	04/24/2013 06:05							TP- 1117.75', TD- 1135', SJ- 44', CSG- 9.625 32.3# H-40, OH- 13.5, MUD-9.3 PPG, VISC-65
Other	04/24/2013 06:06		2	2			50.0	FILL LINES
Other	04/24/2013 06:07		0.2	0.2				STALL OUT/PRESSURE HELD AT 1400 PSI
Pressure Test	04/24/2013 06:08		0.2	0.2				ALL LINES HELD PRESSURE AT 3526 PSI
Pump Spacer 1	04/24/2013 06:13		4	20			147.0	FRESH WATER/FIRST 10 BBLS PUMPED AT WITH PSI
Pump Lead Cement	04/24/2013 06:20		7	67.8			247.0	160 SKS, 12.3 PPG, 2.38 FT3/SK, 13.75 GAL/SK, SETUP TIME 2:38 HRS AT 70 BC
Activity Description	Date/Time	Cht	Rate bbl/min	Volume bbl		Pressure psig		Comments

Sold To #: 300721

Ship To #: 2994326

Quote #:

Sales Order #: 900384888

SUMMIT Version: 7.3.0079

Thursday, May 02, 2013 03:48:00

Cementing Job Log

		#		Stage	Total	Tubing	Casing	
Pump Tail Cement	04/24/2013 06:30		7	60			262.0	160 SKS, 12.8 PPG, 2.11 FT3/ SK, 11.75 GAL/SK, SETUP TIME 1:58 HRS AT 70 BC
Shutdown	04/24/2013 06:39							
Drop Top Plug	04/24/2013 06:43							PLUG DROP VERIFIED BY CUSTOMER AND DRILLER
Pump Displacement	04/24/2013 06:43			74.5				FRESH WATER, GOT RETURNS 61 BBLS INTO DISPLACEMENT, GOT 24 BBLS/57 SKS OF CEMENT TO SURFACE
Slow Rate	04/24/2013 06:54		2	10			271.0	USED 50 LBS OF SUGAR FOR CEMENT RETURNS
Bump Plug	04/24/2013 06:58			85.5			923.0	
Check Floats	04/24/2013 07:00							FLOATS HELD
End Job	04/24/2013 07:01							
Post-Job Safety Meeting (Pre Rig-Down)	04/24/2013 07:07							ALL HES PERSONEL
Depart Location for Service Center or Other Site	04/24/2013 08:30							
Other	04/24/2013 08:31							THANK YOU FOR CHOOSING HALLIBURTON, JAVIER CASTILLO AND CREW
Rig-Up Equipment	04/24/2013 09:00							
Rig-Up Completed	04/24/2013 09:30							

Sold To #: 300721

Ship To #: 2994326

Quote #:

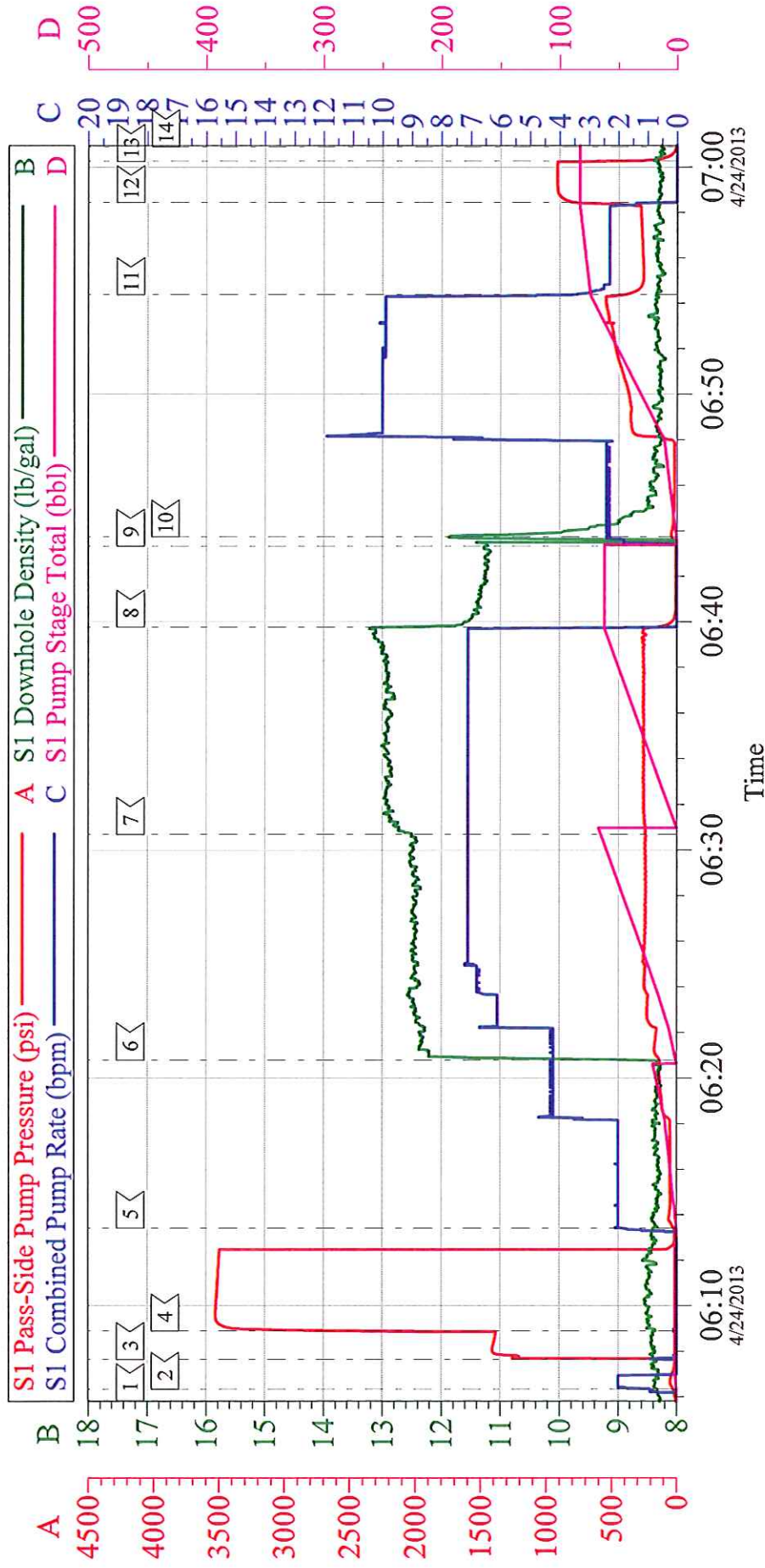
Sales Order #: 900384888

SUMMIT Version: 7.3.0079

Thursday, May 02, 2013 03:48:00

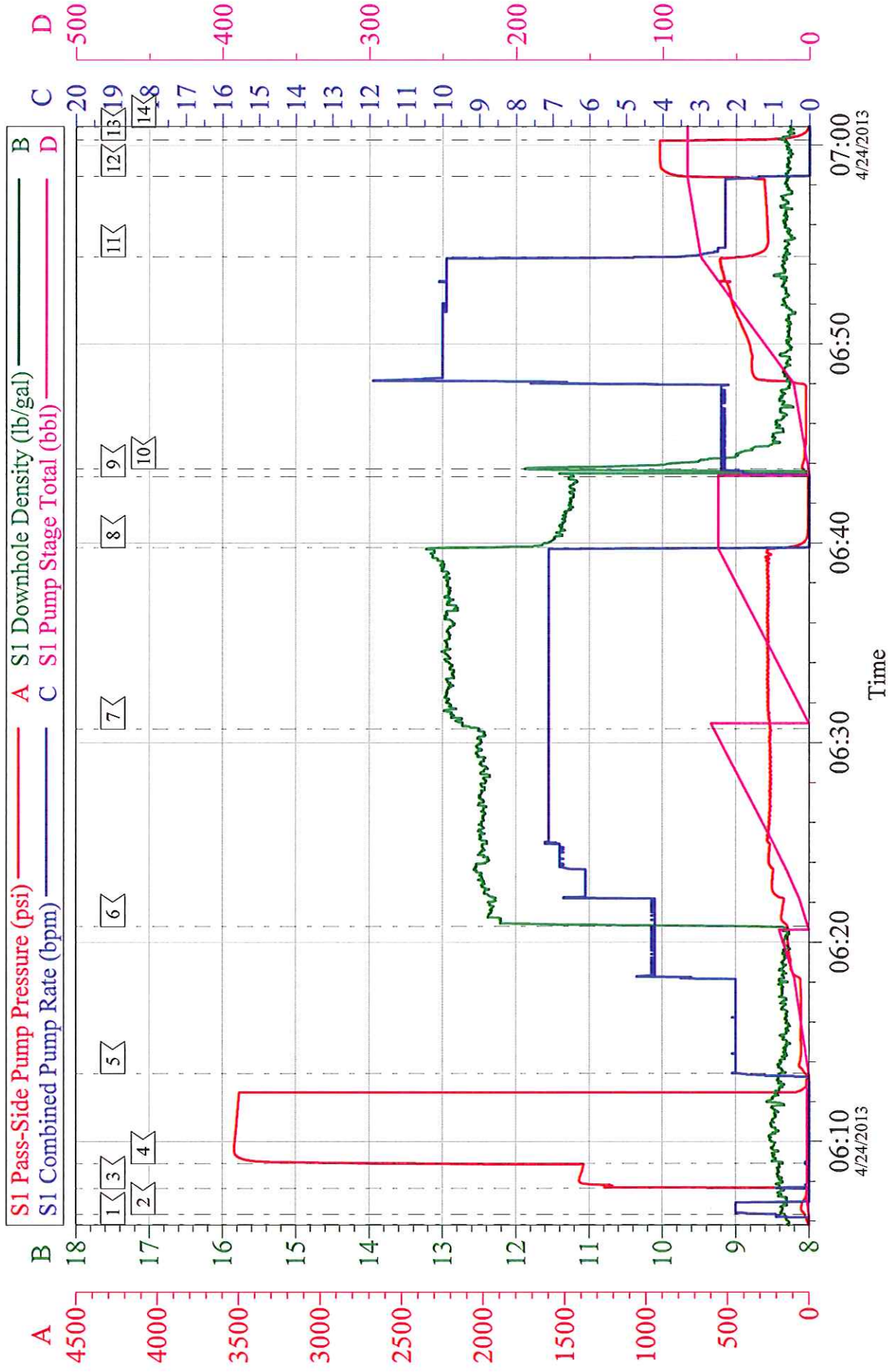
WPX RWF 333-36

9 5/8 SURFACE



Customer: WPX	Job Date: 24-Apr-2013	Sales Order #: 900384888
Well Description: RWF 333-36	Job Type: SURFACE	ADC Used: YES
Company Rep: RICK OAKS	Cement Supervisor: JAVIER CASTILLO	Elite #3: DAN SINCLAIR

WPX RWF 333-36 9 5/8 SURFACE



Customer: WPX	Job Date: 24-Apr-2013	Sales Order #: 900384888
Well Description: RWF 333-36	Job Type: SURFACE	ADC Used: YES
Company Rep: RICK OAKS	Cement Supervisor: JAVIER CASTILLO	Elite #3: DAN SINCLAIR