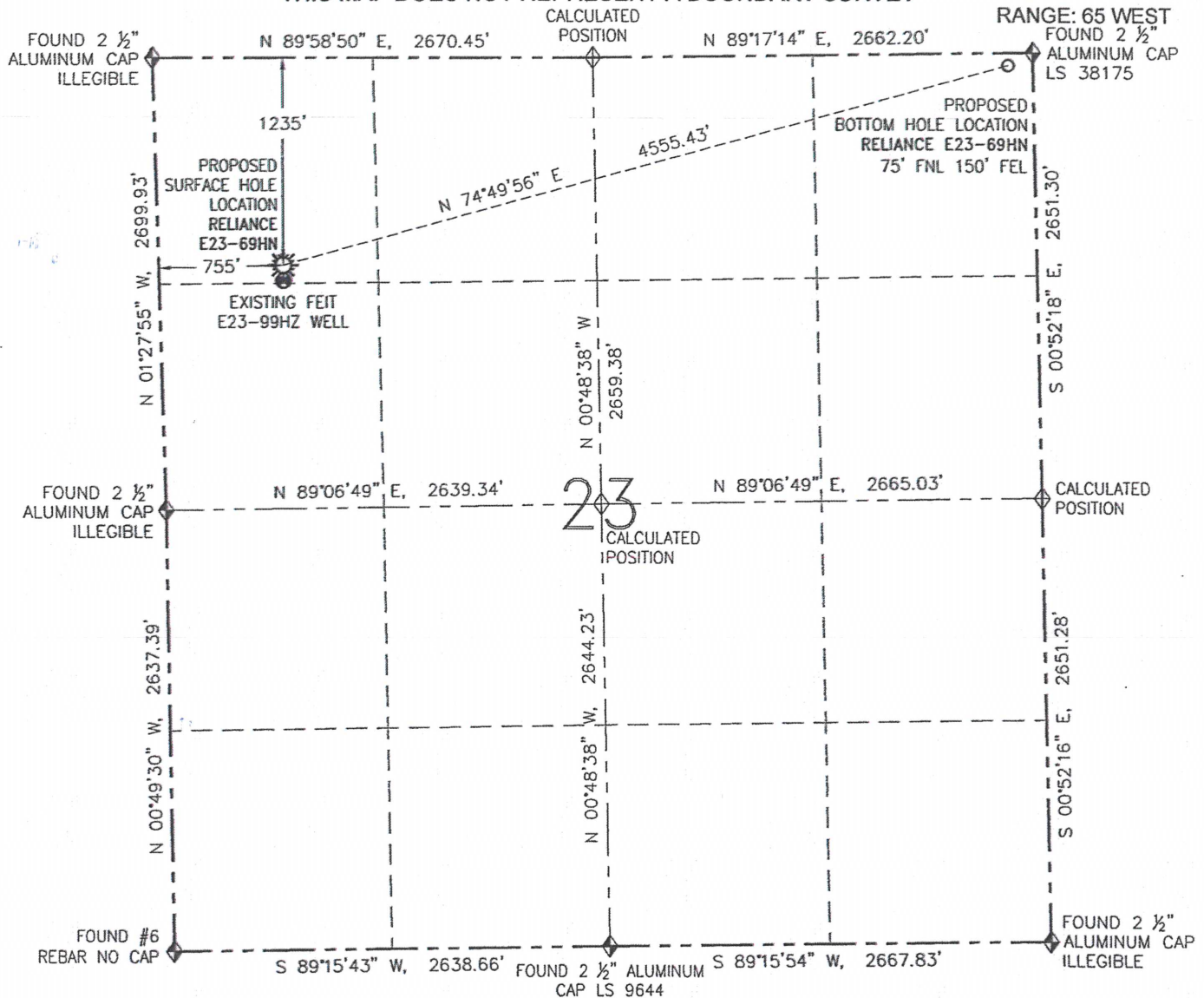


# WELL LOCATION CERTIFICATE

RELIANCE E23-69HN

THIS MAP DOES NOT REPRESENT A BOUNDARY SURVEY

SECTION: 23  
TOWNSHIP: 6 NORTH  
RANGE: 65 WEST  
FOUND 2 1/2" ALUMINUM CAP  
LS 38175



## SURFACE HOLE LOCATION (NAD 83)

LATITUDE: N 40.47541°  
LONGITUDE: W 104.63728°  
ELEVATION: 4733  
PDOP: 1.7  
1/4-1/4: NW NW  
NEAREST PROPERTY LINE: 755' W

IN ACCORDANCE WITH A REQUEST FROM GREG WILSON-NOBLE ENERGY INC., R&R ENGINEERS-SURVEYORS, INC. HAS DETERMINED THE SURFACE HOLE LOCATION OF THE RELIANCE E23-69HN WELL TO BE 1235' FNL AND 755' FWL AS MEASURED AT (90) DEGREES FROM THE SECTION LINES OF SECTION 23, TOWNSHIP 6 NORTH, RANGE 65 WEST OF THE 6TH PRINCIPAL MERIDIAN, WELD COUNTY, COLORADO. THE BOTTOM HOLE LOCATION, AS PROVIDED BY THE CLIENT, IS TO BE 75' FNL AND 150' FEL OF SECTION 23, TOWNSHIP 6 NORTH, RANGE 65 WEST.

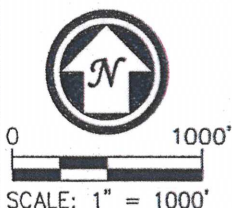
I HEREBY CERTIFY THAT THIS WELL LOCATION CERTIFICATE WAS PREPARED BY ME, OR UNDER MY DIRECT SUPERVISION, THAT THE FIELD WORK WAS COMPLETED ON 12/27/12, FOR AND ON BEHALF OF NOBLE ENERGY INC., THAT IT IS NOT A LAND SURVEY PLAT OR AN IMPROVEMENT SURVEY PLAT, AND THAT IT IS NOT TO BE RELIED UPON FOR ESTABLISHMENT OF FENCES, BUILDINGS, OR OTHER FUTURE IMPROVEMENT LINES.

## BOTTOM HOLE LOCATION

LATITUDE: N 40.47856°  
LONGITUDE: W 104.62144°

## NOTES:

1. BEARINGS ARE GRID BEARINGS OF THE COLORADO STATE PLANE COORDINATE SYSTEM, NORTH ZONE, NAD 83. THE LINEAL DIMENSIONS SHOWN HEREON ARE BASED UPON THE "U.S. SURVEY FOOT".
2. ELEVATIONS ARE BASED UPON NGS OPUS SOLUTION NAVD 88 DATUM COMPUTED USING GEOID09.
3. THE NEAREST EXISTING WELL IS: FEIT E23-99HZ 92' S.
4. SEE LOCATION DRAWING FOR ALL IMPROVEMENTS WITHIN 400' OF THE OIL/GAS LOCATION.
5. SURFACE USE: CROPLAND.



## LEGEND

- PROPOSED WELL
- EXISTING WELL
- BOTTOM HOLE
- FOUND MONUMENT
- CALCULATED POSITION



FIELD DATE: 12/27/12  
PLOT DATE: 03/14/13  
DRAWN BY: CJD  
JOB NO.: NE12383  
SHEET NO.: 1 of 3

## NOTICE:

ACCORDING TO COLORADO LAW, YOU MUST COMMENCE ANY LEGAL ACTION BASED UPON ANY DEFECT IN THIS W.L.C. WITHIN THREE YEARS AFTER YOU FIRST DISCOVER SUCH DEFECT. IN NO EVENT MAY ANY ACTION BASED UPON ANY DEFECT IN THIS W.L.C. BE COMMENCED MORE THAN TEN YEARS FROM THE DATE OF THE CERTIFICATION SHOWN HEREON (13-80-105 C.R.S.).



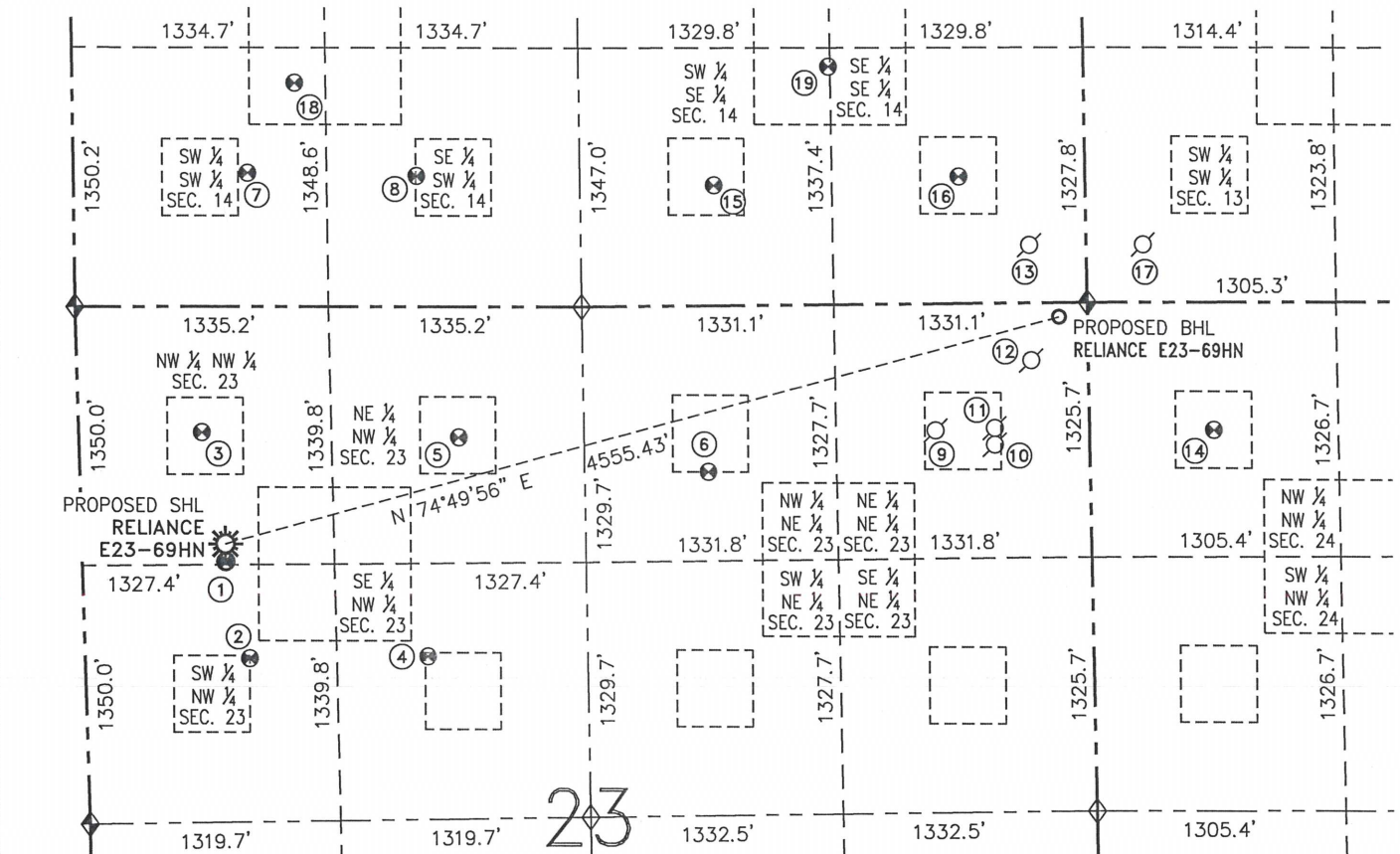
DAVID C. HOLMES, PLS 32828  
FOR AND ON BEHALF OF R&R ENGINEERS-SURVEYORS, INC.

# SITE SKETCH

RELiance E23-69HN

THIS MAP DOES NOT REPRESENT A BOUNDARY SURVEY

SECTION: 23  
TOWNSHIP: 6 NORTH  
RANGE: 65 WEST



- |  |  |   |  |  |  |
|--|--|---|--|--|--|
| <p>① FEIT E23-99HZ<br/>NW/NW SEC. 23<br/>1327' FNL<br/>754' FWL<br/>EL=4732<br/>N 40.47515°<br/>W 104.63728°<br/>PDOP 2.6</p>  | <p>② FEIT E23-5<br/>SW/NW SEC. 23<br/>1833' FNL<br/>865' FWL<br/>EL=4728<br/>N 40.47376°<br/>W 104.63685°<br/>PDOP 1.8</p>   | <p>③ FEIT 2-23EG<br/>NW/NW SEC. 23<br/>654' FNL<br/>648' FWL<br/>EL=4733<br/>N 40.47700°<br/>W 104.63770°<br/>PDOP 1.6</p>    | <p>④ FEIT E23-6<br/>SE/NW SEC. 23<br/>1821' FNL<br/>1803' FWL<br/>EL=4708<br/>N 40.47377°<br/>W 104.63348°<br/>PDOP 1.7</p>    | <p>⑤ FEIT E23-3<br/>NE/NW SEC. 23<br/>680' FNL<br/>2001' FWL<br/>EL=4706<br/>N 40.47690°<br/>W 104.63284°<br/>PDOP 1.9</p> | <p>⑥ DINNER E23-2<br/>NW/NE SEC. 23<br/>865' FNL<br/>2012' FEL<br/>EL=4703<br/>N 40.47638°<br/>W 104.62812°<br/>PDOP 2.0</p>                 |
| <p>⑦ DINNER 1<br/>SW/SW SEC. 14<br/>696' FSL<br/>917' FWL<br/>EL=4718<br/>N 40.48070°<br/>W 104.63677°<br/>PDOP 2.8</p>        | <p>⑧ DINNER 14-34<br/>SE/SW SEC. 14<br/>680' FSL<br/>1806' FWL<br/>EL=4712<br/>N 40.48063°<br/>W 104.63358°<br/>PDOP 2.7</p> | <p>⑨ DINNER 23-1<br/>NE/NE SEC. 23<br/>PER COGCC:<br/>660' FNL<br/>810' FEL<br/>DRILLED &amp;<br/>ABANDONED</p>               | <p>⑩ CANNON NO.1-23X<br/>NE/NE SEC. 23<br/>PER COGCC:<br/>719' FNL<br/>500' FEL<br/>PLUGGED &amp;<br/>ABANDONED</p>            | <p>⑪ CANNON NO. 1-23<br/>NE/NE SEC. 23<br/>PER COGCC:<br/>669' FNL<br/>500' FEL<br/>DRILLED &amp;<br/>ABANDONED</p>        | <p>⑫ CANNON SURE<br/>SHOT NO. 1-23P<br/>NE/NE SEC. 23<br/>PER COGCC:<br/>300' FNL<br/>300' FEL<br/>DRILLED &amp;<br/>ABANDONED</p>           |
| <p>⑬ SCHWISOW 5-14EG<br/>SE/SE SEC. 14<br/>PER COGCC:<br/>300' FSL<br/>300' FEL<br/>PLUGGED &amp;<br/>ABANDONED</p>            | <p>⑭ OLE 4-24<br/>NW/NW SEC. 24<br/>666' FNL<br/>652' FWL<br/>EL=4696<br/>N 40.47693°<br/>W 104.61855°<br/>PDOP 2.0</p>      | <p>⑮ PALSER E14-15<br/>SW/SE SEC. 14<br/>626' FSL<br/>1956' FEL<br/>EL=4710<br/>N 40.48047°<br/>W 104.62795°<br/>PDOP 1.5</p> | <p>⑯ SCHWISOW E14-16<br/>SE/SE SEC. 14<br/>660' FSL<br/>666' FEL<br/>EL=4706<br/>N 40.48057°<br/>W 104.62331°<br/>PDOP 1.9</p> | <p>⑰ DINNER 13-13<br/>SW/SW SEC. 13<br/>PER COGCC:<br/>300' FSL<br/>300' FWL<br/>PLUGGED &amp;<br/>ABANDONED</p>           | <p>⑱ DINNER 14-35<br/>SW/SW SEC. 14<br/>PER COGCC:<br/>1165' FSL<br/>1171' FWL<br/>EL=4717<br/>N 40.48199°<br/>W 104.63587°<br/>PDOP 2.6</p> |
| <p>⑲ PALSER E14-23<br/>SW/SE SEC. 14<br/>1239' FSL<br/>1339' FEL<br/>EL=4713<br/>N 40.48216°<br/>W 104.62573°<br/>PDOP 3.6</p> |  |   |  |  |  |

## NOTES:

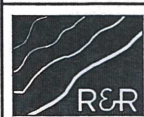
- THIS SKETCH DOES NOT REPRESENT A BOUNDARY SURVEY.
- HORIZONTAL DATUM IS NAD 83.
- VERTICAL DATUM IS NAVD 88.



0 1000'  
SCALE: 1" = 1000'

## LEGEND

- PROPOSED WELL
- EXISTING WELL
- BOTTOM HOLE
- ABANDONED WELL
- FOUND MONUMENT
- CALCULATED POSITION



ENGINEERS  
SURVEYORS

FIELD DATE: 12/27/12  
PLOT DATE: 04/09/13  
DRAWN BY: CJD  
JOB NO.: NE12383  
SHEET NO.: 2 of 3