



Lat40°, Inc. 1635 Foxtrail Drive, Suite 325 Loveland, CO 970-776-3321

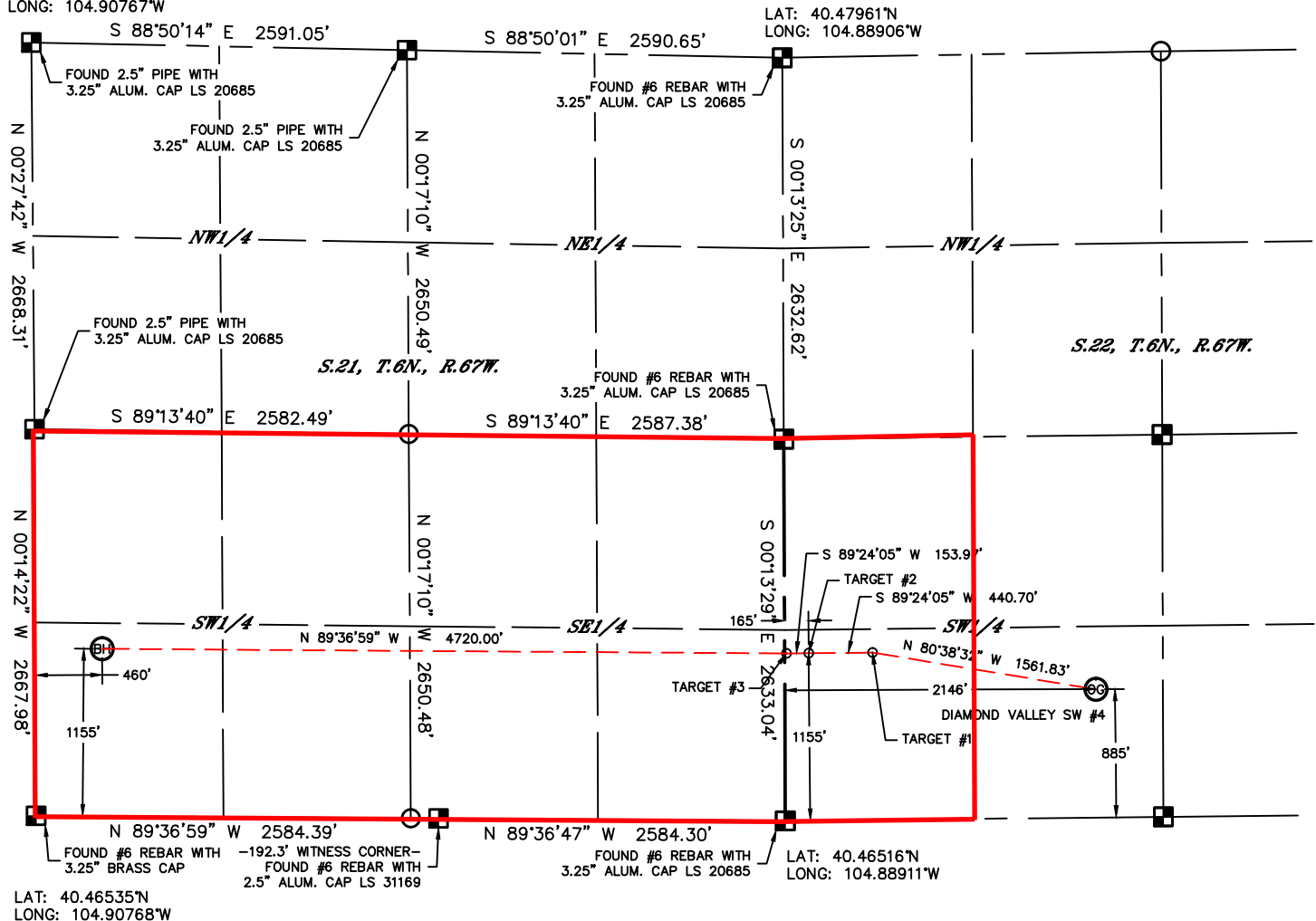
WELL LOCATION CERTIFICATE

THIS MAP DOES NOT REPRESENT A BOUNDARY SURVEY

SECTION: 22
TOWNSHIP: 6N
RANGE: 67W

PROPOSED SPACING UNIT DIAMOND VALLEY SW #4

LAT: 40.47999°N
LONG: 104.90767°W



LAT: 40.46535°N
LONG: 104.90768°W



NOTE

According to Colorado law, you must commence any legal action based upon any defect in this W.L.C. within three years after you discover such defect. In no event, may any action based upon any defect in this survey be commenced more than ten years after the date of the certificate shown hereon. (13-80-105 C.R.S.)

LEGEND

- = ALIQUOT MONUMENT AS DESCRIBED
- = CALCULATED POSITION

SHEET 2 OF 2

Brian T. Brinkman—On behalf of
Colorado Licensed Professional Land Surveyor No. 38175
PROJECT#: 2011212

