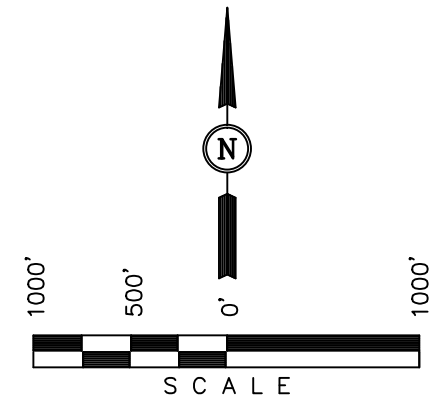


2000 Alum. Cap  
1.5' Below Ground  
LS 7361  
Lat: 39.723803°  
Long: 104.508419°

Well location, YOUNGBERG #10-11-1H (SURFACE LOCATION), located as shown in the NE 1/4 SE 1/4 of Section 11, T4S, R64W, 6th P.M., Arapahoe County, Colorado.

BENCHMARK 374 LOCATED ON THE SECTION LINE BETWEEN SECTIONS 12 & 13, T5S, R64W, 6th. P.M., TAKEN FROM 1988 PUBLISHED DATUM BY THE UNITED STATES DEPARTMENT OF THE INTERIOR, GEOLOGICAL SURVEY AS BEING 6054.61 FEET.

BASIS OF BEARINGS IS A G.P.S. OBSERVATION.






THIS IS TO CERTIFY THAT THE ABOVE PLAT WAS PREPARED FROM  
FIELD NOTES OF ACTUAL SURVEYS MADE BY ME OR UNDER MY  
SUPERVISION AND THAT THE SAME ARE TRUE AND CORRECT TO THE  
BEST OF MY KNOWLEDGE AND BELIEF.

REGISTERED LAND SURVEYOR  
REGISTRATION NO. 17492  
STATE OF COLORADO

REV.: 07-23-13 J.W.  
REV.: 03-27-13 J.W.

UINTAH ENGINEERING & LAND SURVEYING  
85 SOUTH 200 EAST - VERNAL, UTAH 84078  
(435) 789-1017

 = 90° SYMBOL  
 = PROPOSED WELL HEAD.  
 = SECTION CORNERS LOCATED.

PDOP = 1.3

<b>NAD 83 (SURFACE LOCATION)</b>	
LATITUDE =	39°42'46.94" (39.713039)
LONGITUDE =	104°30'34.19" (104.509497)
<b>NAD 27 (SURFACE LOCATION)</b>	
LATITUDE =	39°42'46.99" (39.713053)
LONGITUDE =	104°30'32.32" (104.508978)

SCALE 1" = 1000'	DATE SURVEYED: 10-04-12	DATE DRAWN: 10-10-12
PARTY Z.B. A.G. H.K.W.	REFERENCES G.L.O. PLAT	
WEATHER COLD	FILE ConocoPhillips Company	

# WELL LOCATION PLAT T4S, R64W, 6th P.M.

ConocoPhillips Company

Well location, YOUNGBERG #10-11-1H (TARGET BOTTOM HOLE), located as shown in the SW 1/4 SW 1/4 of Section 10, T4S, R64W, 6th P.M., Arapahoe County, Colorado.

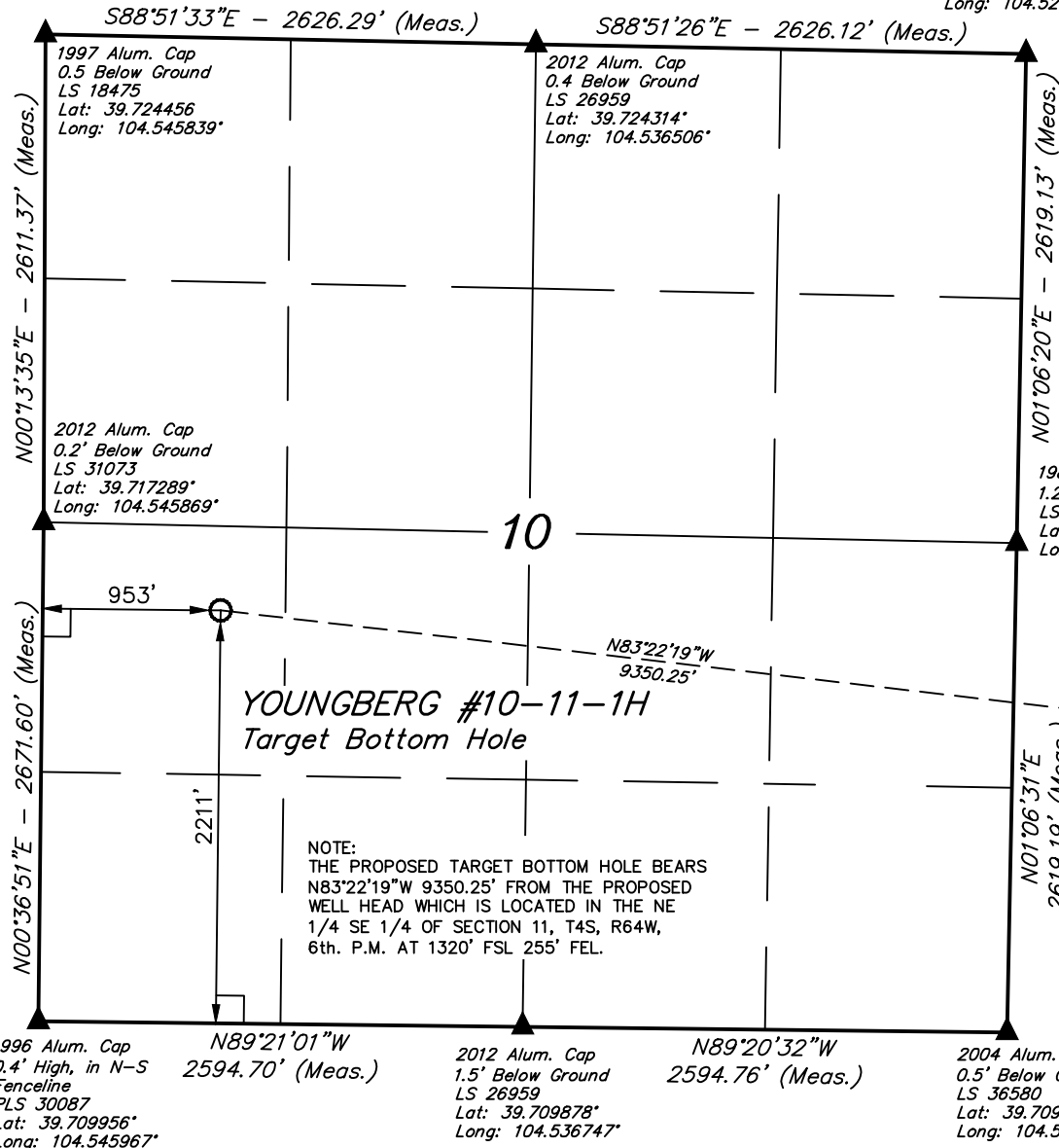
## BASIS OF ELEVATION

BENCHMARK 374 LOCATED ON THE SECTION LINE BETWEEN SECTIONS 12 & 13, T5S, R64W, 6th. P.M., TAKEN FROM 1988 PUBLISHED DATUM BY THE UNITED STATES DEPARTMENT OF THE INTERIOR, GEOLOGICAL SURVEY AS BEING 6054.61 FEET.

## BASIS OF BEARINGS

BASIS OF BEARINGS IS A G.P.S. OBSERVATION.

2004 Alum. Cap  
LS 36580  
Lat: 39.724172°  
Long: 104.527175°



2012 Alum. Cap  
0.4 Below Ground  
LS 26959  
Lat: 39.724314°  
Long: 104.536506°

1988 Alum Cap  
1.2' Below Ground  
LS 2132  
Lat: 39.716986°  
Long: 104.527350°

2012 Alum. Cap  
1.5' Below Ground  
LS 26959  
Lat: 39.709878°  
Long: 104.536747°

2004 Alum. Cap,  
0.5' Below Ground  
LS 36580  
Lat: 39.709800°  
Long: 104.527528°

1996 Alum. Cap  
0.4' High, in N-S  
Fenceline  
PLS 30087  
Lat: 39.709956°  
Long: 104.545967°

NOTE:  
THE PROPOSED TARGET BOTTOM HOLE BEARS  
N83°22'19\"W 9350.25' FROM THE PROPOSED  
WELL HEAD WHICH IS LOCATED IN THE NE  
1/4 SE 1/4 OF SECTION 11, T4S, R64W,  
6th. P.M. AT 1320' FSL 255' FEL.



SCALE

CERTIFICATE

THIS IS TO CERTIFY THAT THE ABOVE PLAT WAS PREPARED FROM FIELD NOTES OF ACTUAL SURVEYS MADE BY ME OR UNDER MY SUPERVISION AND THAT THE SAME ARE TRUE AND CORRECT TO THE BEST OF MY KNOWLEDGE AND BELIEF.

REGISTERED LAND SURVEYOR  
REGISTRATION NO. 17492  
STATE OF COLORADO

REV.: 07-23-13 J.W.  
REV.: 03-27-13 J.W.

**UINTAH ENGINEERING & LAND SURVEYING**  
**85 SOUTH 200 EAST - VERNAL, UTAH 84078**  
**(435) 789-1017**

## LEGEND:

- └─┘ = 90° SYMBOL
- = PROPOSED WELL HEAD.
- ▲ = SECTION CORNERS LOCATED.

NAD 83 (TARGET BOTTOM HOLE)	
LATITUDE = 39°42'57.58" (39.715994)	
LONGITUDE = 104°32'33.01" (104.542503)	
NAD 27 (TARGET BOTTOM HOLE)	
LATITUDE = 39°42'57.63" (39.716008)	
LONGITUDE = 104°32'31.13" (104.541981)	

SCALE 1" = 1000'	DATE SURVEYED: 10-04-12	DATE DRAWN: 10-10-12
PARTY Z.B. A.G. H.K.W.	REFERENCES G.L.O. PLAT	
WEATHER COLD	FILE ConocoPhillips Company	

2004 Alum. Cap  
LS 36580  
Lat: 39.724172°  
Long: 104.527175°

# SECTION BREAKDOWN T4S, R64W, 6th P.M.

2000 Alum. Cap  
1.5' Below Ground  
LS 7361  
Lat: 39.723803°  
Long: 104.508419°

ConocoPhillips Company

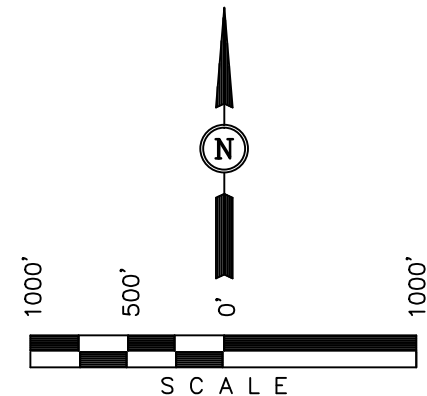
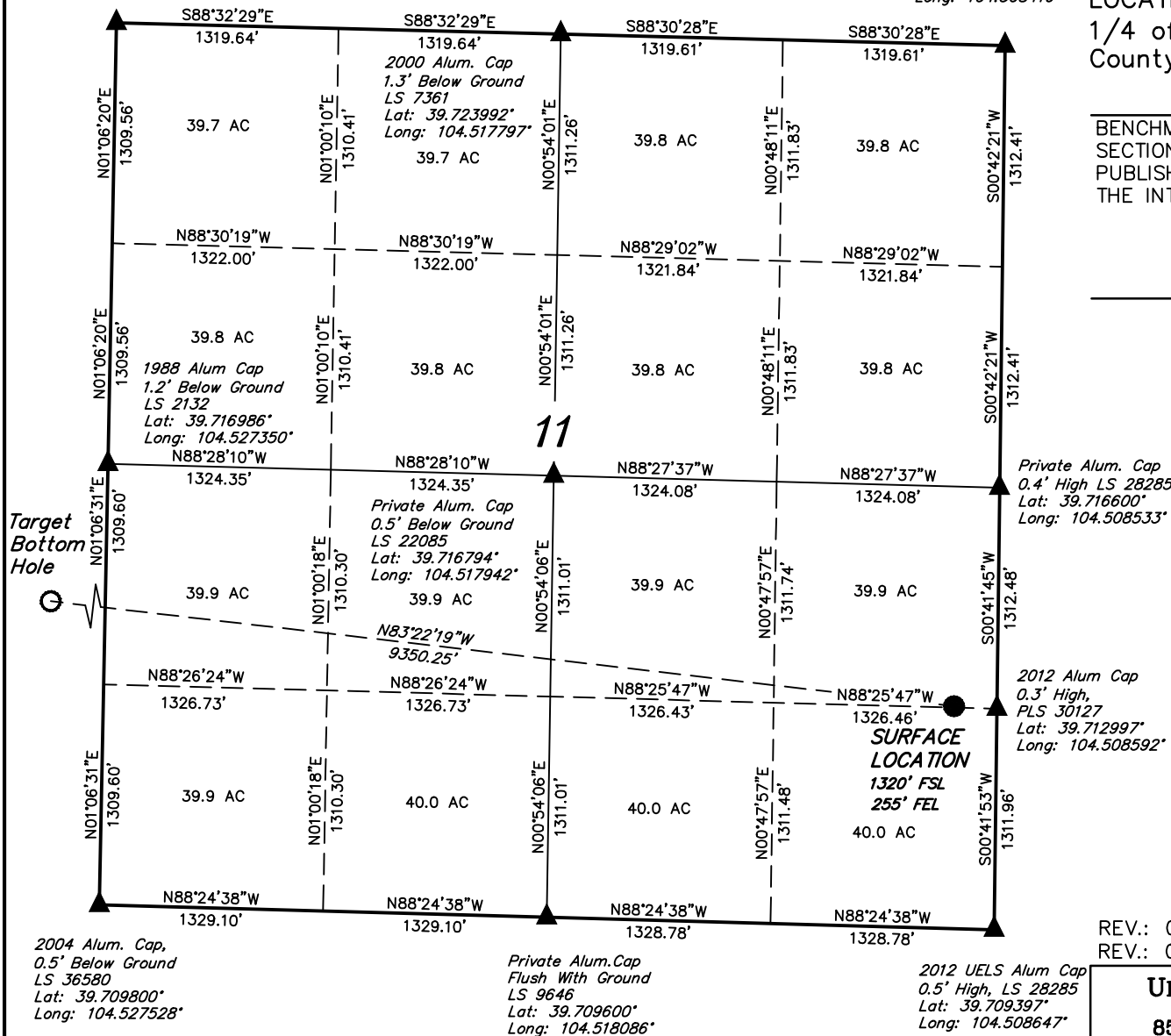
Well location, YOUNGBERG #10-11-1H, (SURFACE LOCATION) located as shown in the NW 1/4 NE 1/4 of Section 11, T4S, R64W, 6th P.M., Arapahoe County, Colorado.

## BASIS OF ELEVATION

BENCHMARK 374 LOCATED ON THE SECTION LINE BETWEEN SECTIONS 12 & 13, T5S, R64W, 6th. P.M., TAKEN FROM 1988 PUBLISHED DATUM BY THE UNITED STATES DEPARTMENT OF THE INTERIOR, GEOLOGICAL SURVEY AS BEING 6054.61 FEET.

## BASIS OF BEARINGS

BASIS OF BEARINGS IS A G.P.S. OBSERVATION.



## CERTIFICATE

THIS IS TO CERTIFY THAT THE ABOVE MAP WAS PREPARED FROM FIELD NOTES OF ACTUAL SURVEYS MADE BY ME OR UNDER MY SUPERVISION AND THAT THE SAME ARE TRUE AND CORRECT TO THE BEST OF MY KNOWLEDGE AND BELIEF.

REGISTERED LAND SURVEYOR  
REGISTRATION NO. 17492  
STATE OF COLORADO

REV.: 07-23-13 J.W.  
REV.: 03-27-13 J.W.

UINTAH ENGINEERING & LAND SURVEYING  
85 SOUTH 200 EAST - VERNAL, UTAH 84078  
(435) 789-1017

## LEGEND:

- └─┘ = 90° SYMBOL
- = PROPOSED WELL HEAD.
- ▲ = SECTION CORNERS LOCATED.

NOTE:  
THE PROPOSED TARGET BOTTOM HOLE FOR THIS WELL IS LOCATED IN THE NW 1/4 SW 1/4 OF SECTION 10, T4S, R64W, 6th. P.M. AT 2211' FSL 953' FWL. IT BEARS N83°22'19"W 9350.251' FROM THE PROPOSED WELL HEAD.

PDOP = 1.3

### NAD 83 (SURFACE LOCATION)

LATITUDE = 39°42'46.94" (39.713039)  
LONGITUDE = 104°30'34.19" (104.509497)

### NAD 27 (SURFACE LOCATION)

LATITUDE = 39°42'46.99" (39.713053)  
LONGITUDE = 104°30'32.32" (104.508978)

SCALE 1" = 1000'	DATE SURVEYED: 10-4-12	DATE DRAWN: 10-12-12
PARTY Z.B. A.G. H.K.W.	REFERENCES G.L.O. PLAT	
WEATHER COLD	FILE ConocoPhillips Company	

# SECTION BREAKDOWN

T4S, R64W, 6th P.M.

1997 Alum. Cap  
0.5' Below Ground  
LS 18475  
Lat: 39.724456°  
Long: 104.545839°

2004 Alum. Cap  
LS 36580  
Lat: 39.724172°  
Long: 104.527175°

ConocoPhillips Company

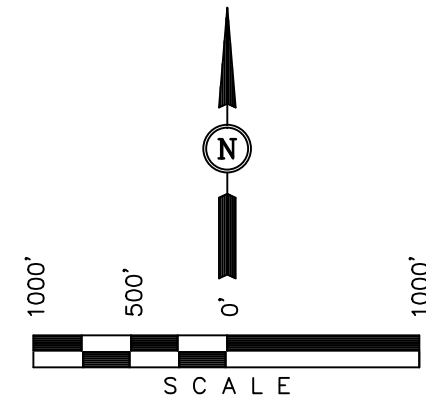
Well location, YOUNGBERG #10-11-1H (TARGET BOTTOM HOLE), located as shown in the SW 1/4 SW 1/4 of Section 10, T4S, R64W, 6th P.M., Arapahoe County, Colorado.

## BASIS OF ELEVATION

BENCHMARK 374 LOCATED ON THE SECTION LINE BETWEEN SECTIONS 12 & 13, T5S, R64W, 6th. P.M., TAKEN FROM 1988 PUBLISHED DATUM BY THE UNITED STATES DEPARTMENT OF THE INTERIOR, GEOLOGICAL SURVEY AS BEING 6054.61 FEET.

## BASIS OF BEARINGS

BASIS OF BEARINGS IS A G.P.S. OBSERVATION.



## CERTIFICATE

THIS IS TO CERTIFY THAT THE ABOVE PLAT WAS PREPARED FROM FIELD NOTES OF ACTUAL SURVEYS MADE BY ME OR UNDER MY SUPERVISION AND THAT THE SAME ARE TRUE AND CORRECT TO THE BEST OF MY KNOWLEDGE AND BELIEF.

REGISTERED LAND SURVEYOR  
REGISTRATION NO. 17492  
STATE OF COLORADO

REV.: 07-23-13 J.W.  
REV.: 03-27-13 J.W.

**UINTAH ENGINEERING & LAND SURVEYING**  
85 SOUTH 200 EAST - VERNAL, UTAH 84078  
(435) 789-1017

SCALE 1" = 1000'	DATE SURVEYED: 10-04-12	DATE DRAWN: 10-12-12
PARTY Z.B. A.G. H.K.W.	REFERENCES G.L.O. PLAT	
WEATHER COLD	FILE ConocoPhillips Company	

1996 Alum. Cap  
0.4' High, in N-S  
Fenceline  
PLS 30087  
Lat: 39.709956°  
Long: 104.545967°

2012 Alum. Cap  
1.5' Below Ground  
LS 26959  
Lat: 39.709878°  
Long: 104.536747°

2004 Alum. Cap,  
0.5' Below Ground  
LS 36580  
Lat: 39.709800°  
Long: 104.527528°

## LEGEND:

- └─┘ = 90° SYMBOL
- = PROPOSED WELL HEAD.
- ▲ = SECTION CORNERS LOCATED.

NOTE:  
THE PROPOSED TARGET BOTTOM HOLE BEARS N83°22'19"W 9350.25' FROM THE PROPOSED WELL HEAD WHICH IS LOCATED IN THE NE 1/4 SE 1/4 OF SECTION 11, T4S, R64W, 6th. P.M. AT 1320' FSL 255' FEL.

<b>NAD 83 (TARGET BOTTOM HOLE)</b>
LATITUDE = 39°42'57.58" (39.715994)
LONGITUDE = 104°32'33.01" (104.542503)
<b>NAD 27 (TARGET BOTTOM HOLE)</b>
LATITUDE = 39°42'57.63" (39.716008)
LONGITUDE = 104°32'31.13" (104.541891)

