

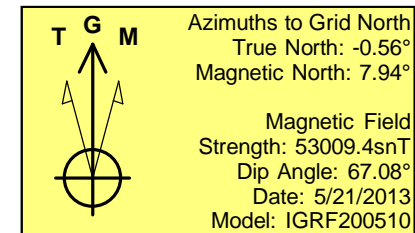
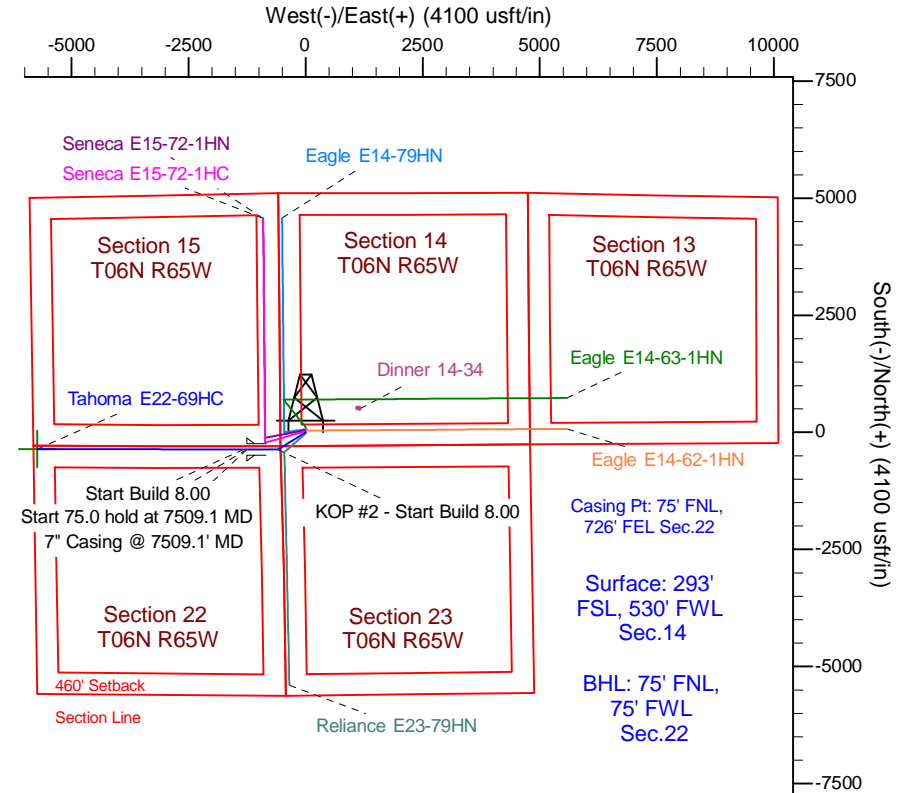
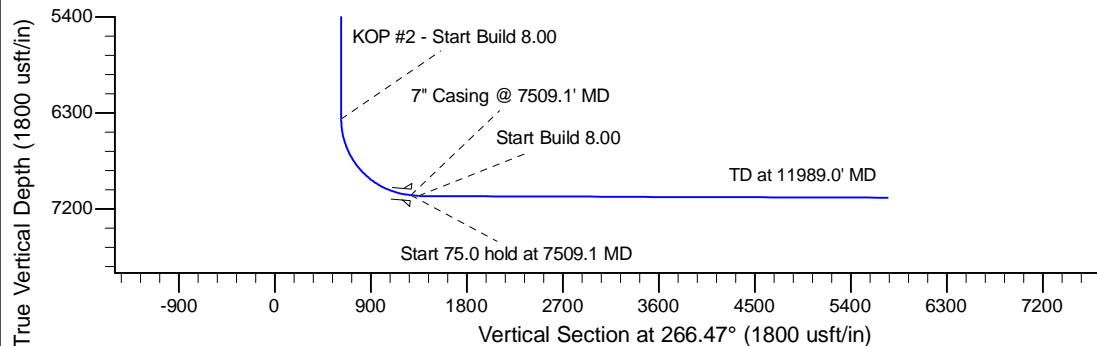
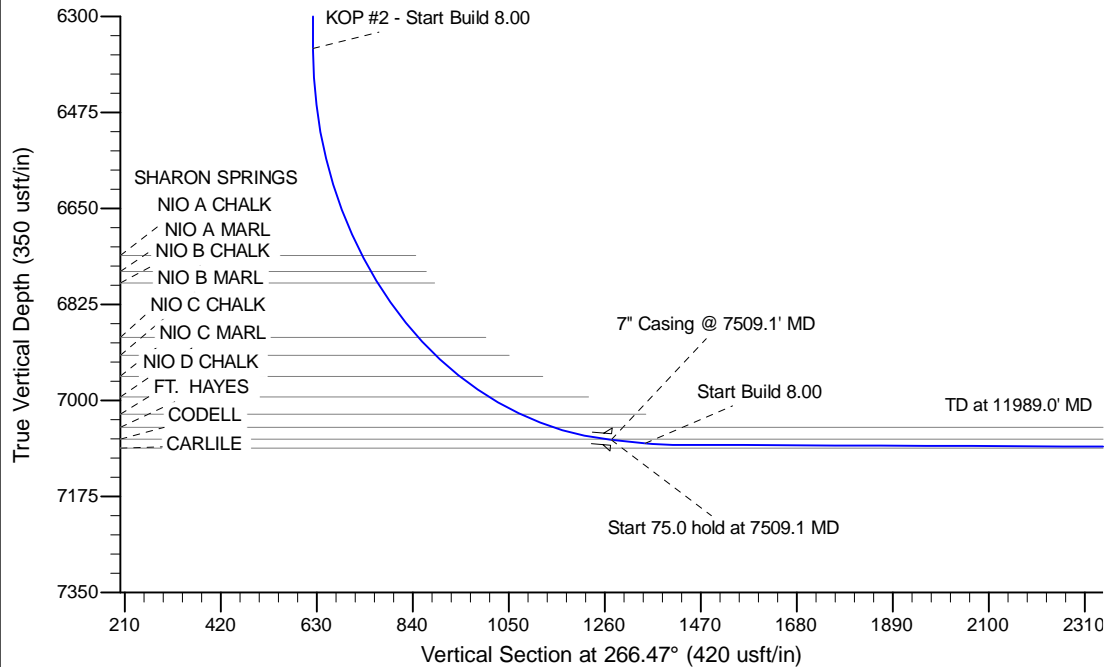
Project: Wattenberg Field
Site: E (Sec.14-T06N-R65W) Weld County, CO
Well: Tahoma E22-69HC
Wellbore: Original Drilling
Design: APD - Rev 0

Northern Region Drilling

Geodetic System: US State Plane 1983
Datum: North American Datum 1983
Ellipsoid: GRS 1980
Zone: Colorado Northern Zone
System Datum: Mean Sea Level

SECTION DETAILS

Sec	MD	Inc	Azi	TVD	+N/-S	+E/-W	Dleg	TFace	VFace	Target
1	0.0	0.00	0.00	0.0	0.0	0.0	0.00	0.00	0.0	
2	1200.0	0.00	0.00	1200.0	0.0	0.0	0.00	0.00	0.0	
3	2000.0	16.00	238.48	1989.6	-58.0	-94.6	2.00	238.48	98.0	
4	3748.5	16.00	238.48	3670.4	-310.0	-505.4	0.00	0.00	523.5	
5	4548.4	0.00	0.00	4460.0	-368.0	-600.0	2.00	180.00	621.5	
6	6446.6	0.00	0.00	6358.2	-368.0	-600.0	0.00	0.00	621.5	
7	7509.1	85.00	270.16	7071.7	-366.2	-1253.8	8.00	270.16	1273.9	
8	7584.1	85.00	270.16	7078.2	-366.0	-1328.5	0.00	0.00	1348.5	
9	7644.1	89.80	270.16	7080.9	-365.8	-1388.4	8.00	0.00	1408.3	
10	11989.0	89.80	270.16	7096.1	-353.8	-5733.2	0.00	0.00	5744.2	Tahoma E22-69HC BHL 75'FNL, 75'FWL



WELL DETAILS: Tahoma E22-69HC				
Ground Level: 4739.0				
0.0	0.0	Northing	Easting	Latitude
0.0	0.0	1418723.75	3239745.75	40.479600
Longitude				
-104.638160				
Plan: APD - Rev 0 (Tahoma E22-69HC/Original Drilling)				
Created By: Shailey Jewell				
Date: 9:26, May 24 2013				
OK to submit with 2A as per Noble Drilling				
5/24/2013 9:38				