

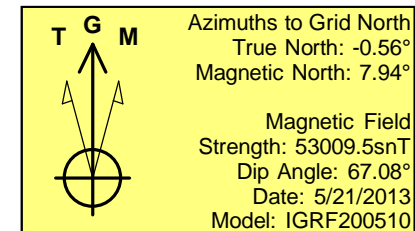
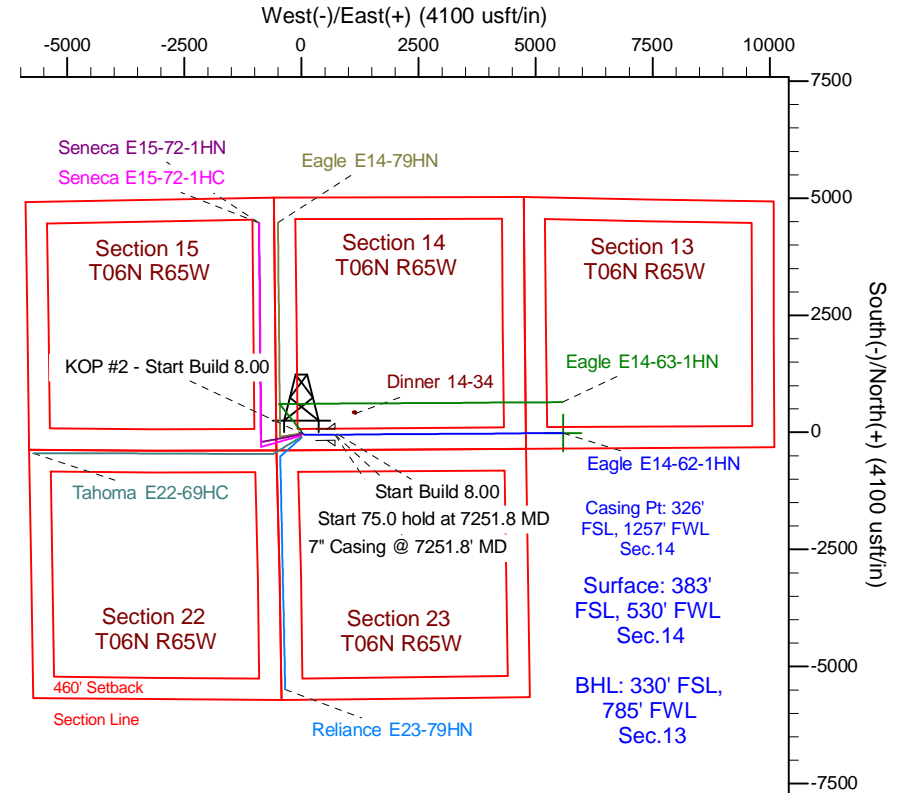
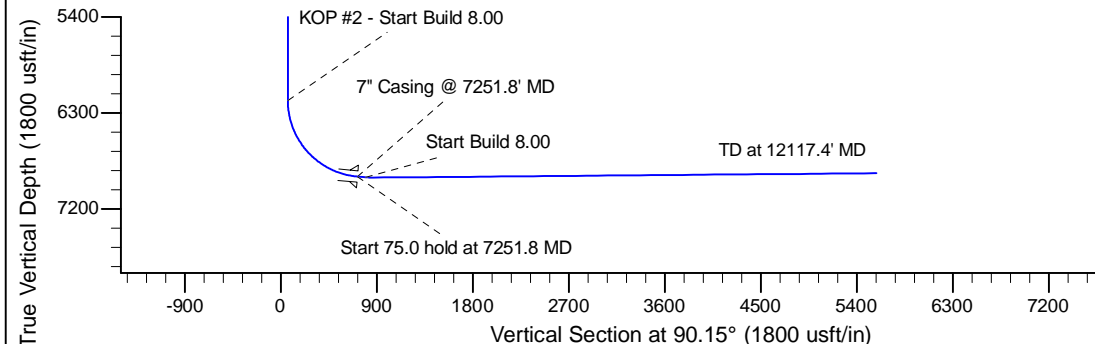
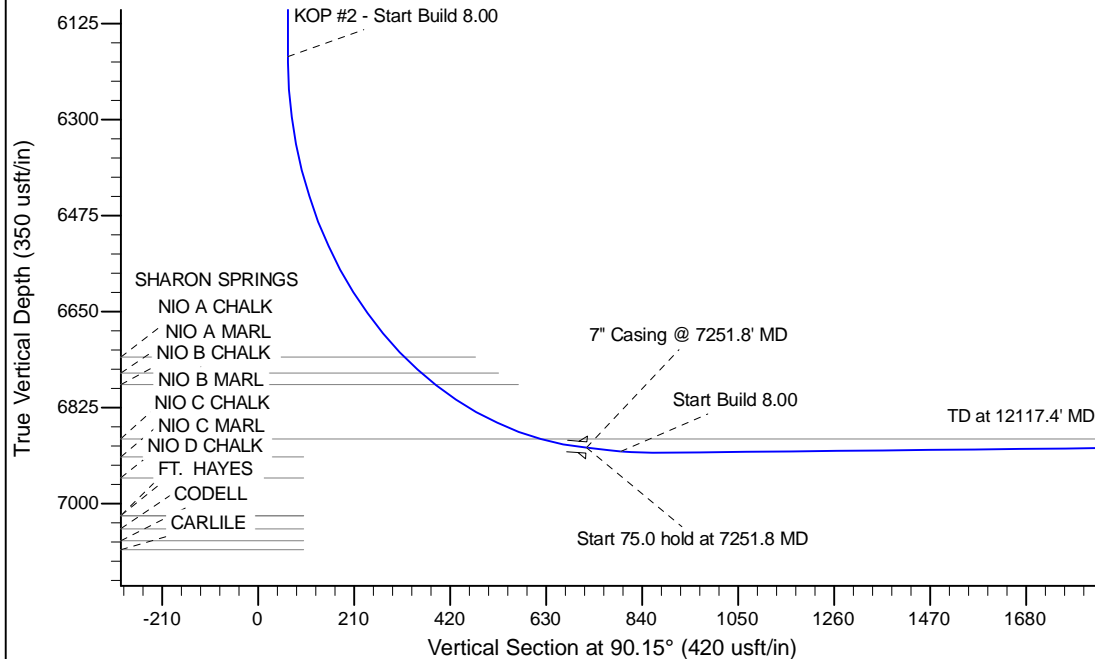
Project: Wattenberg Field
 Site: E (Sec.14-T06N-R65W) Weld County, CO
 Well: Eagle E14-62-1HN
 Wellbore: Original Drilling
 Design: APD - Rev 0

Northern Region Drilling

Geodetic System: US State Plane 1983
 Datum: North American Datum 1983
 Ellipsoid: GRS 1980
 Zone: Colorado Northern Zone
 System Datum: Mean Sea Level

SECTION DETAILS

| Sec | MD | Inc | Azi | TVD | +N/-S | +E/-W | Dleg | TFace | Vsect | Target |
|-----|---------|-------|--------|--------|-------|--------|------|--------|--------|--------------------------------------|
| 1 | 0.0 | 0.00 | 0.00 | 0.0 | 0.0 | 0.0 | 0.00 | 0.00 | 0.0 | |
| 2 | 2200.0 | 0.00 | 0.00 | 2200.0 | 0.0 | 0.0 | 0.00 | 0.00 | 0.0 | |
| 3 | 2600.8 | 8.02 | 129.19 | 2599.5 | -17.7 | 21.7 | 2.00 | 129.19 | 21.7 | |
| 4 | 2800.8 | 8.02 | 129.19 | 2797.5 | -35.3 | 43.3 | 0.00 | 0.00 | 43.4 | |
| 5 | 3201.6 | 0.00 | 0.00 | 3197.0 | -53.0 | 65.0 | 2.00 | 180.00 | 65.1 | |
| 6 | 6189.3 | 0.00 | 0.00 | 6184.7 | -53.0 | 65.0 | 0.00 | 0.00 | 65.1 | |
| 7 | 7251.8 | 85.00 | 89.60 | 6898.2 | -48.4 | 718.8 | 8.00 | 89.60 | 718.9 | |
| 8 | 7326.8 | 85.00 | 89.60 | 6904.7 | -47.9 | 793.5 | 0.00 | 0.00 | 793.6 | |
| 9 | 7395.5 | 90.50 | 89.60 | 6907.4 | -47.4 | 862.1 | 8.00 | 0.00 | 862.3 | |
| 10 | 12117.4 | 90.50 | 89.60 | 6866.2 | -14.3 | 5583.7 | 0.00 | 0.00 | 5583.8 | Eagle E14-62-1HN BHI330'FSL, 785'FWL |



| WELL DETAILS: Eagle E14-62-1HN | | | | | |
|--|-----|------------|-------------------------|-----------|-------------|
| Ground Level: 4736.0 | | | | | |
| 0.0 | 0.0 | 1418814.82 | 3239744.87 | 40.479850 | -104.638160 |
| Plan: APD - Rev 0 (Eagle E14-62-1HN/Original Drilling) | | | | | |
| Created By: Shailey Jewell | | | Date: 9:09, May 24 2013 | | |
| OK to submit with 2A as per Noble Drilling | | | | | |
| 5/24/2013 9:43 | | | | | |