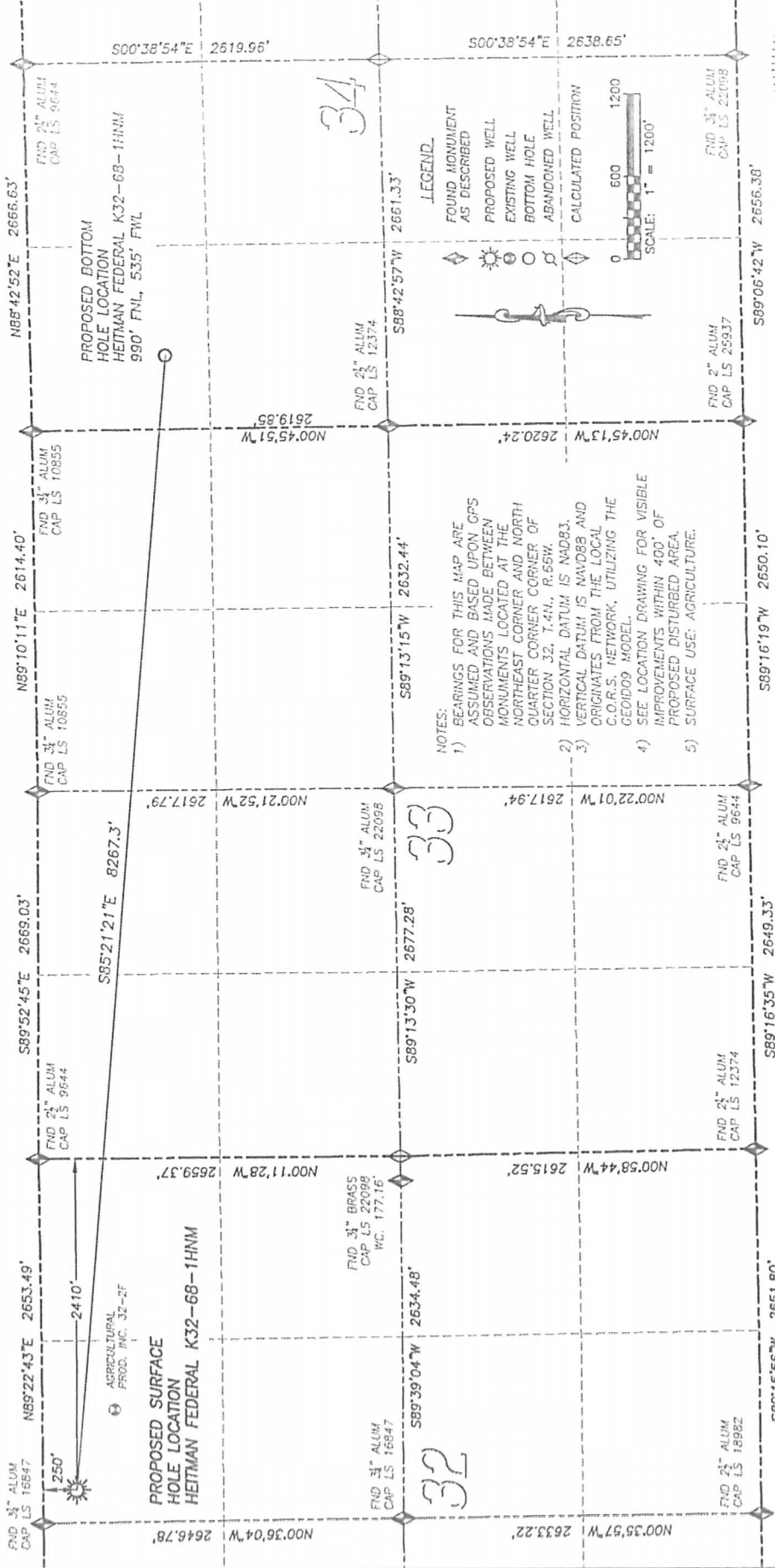


DALEY LAND SURVEYING, INC. PARKER, CO. 80134 303 953 9841

# WELL LOCATION CERTIFICATE - HEITMAN FEDERAL K32-68-1HNM

SECTION 32, TOWNSHIP 4 NORTH, RANGE 66 WEST OF THE 6TH PRINCIPAL MERIDIAN



## NAD 83 LATITUDE AND LONGITUDE

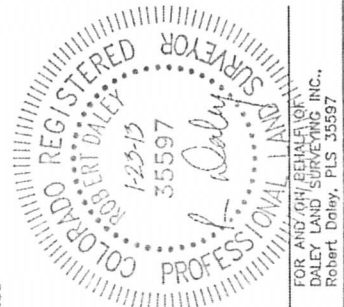
HEITMAN FEDERAL K32-68-1HNM  
 SURFACE HOLE:  
 LATITUDE: N40.27467°  
 LONGITUDE: W104.80055°  
 FOOTAGE: 4773'  
 ELEVATION: 250' FNL, 2410' FEL  
 PDOP: 1.7  
 QTR/QTR: NW4/NE4  
 PROP LINE: 242 ± WEST

BOTTOM HOLE:  
 LATITUDE: N40.27265°  
 LONGITUDE: W104.77105°  
 FOOTAGE: 990' FNL, 535' FWL  
 OF SECTION 34

NEAREST EXISTING WELL:  
 AGRICULTURAL PRODUCTS 32-2F  
 LATITUDE: N40.27390°  
 LONGITUDE: W104.79846°  
 ELEVATION: 4771'  
 647' SOUTHEAST

IN ACCORDANCE WITH A REQUEST FROM MATT VERBIT OF NOBLE ENERGY INC., DALEY LAND SURVEYING, INC. HAS DETERMINED THE SURFACE LOCATION OF THE HEITMAN FEDERAL K32-68-1HNM WELL TO BE 250' FNL, 2410' FEL, AS MEASURED AT NINETY (90) DEGREES FROM THE SECTION LINES OF SECTION 32, TOWNSHIP 4 NORTH, RANGE 66 WEST OF THE 6TH PRINCIPAL MERIDIAN, WELD COUNTY, COLORADO. THE BOTTOM HOLE LOCATION, PROVIDED BY THE CLIENT, IS TO BE 990' FNL, 535' FWL OF SECTION 34, T.4N., R.66W.

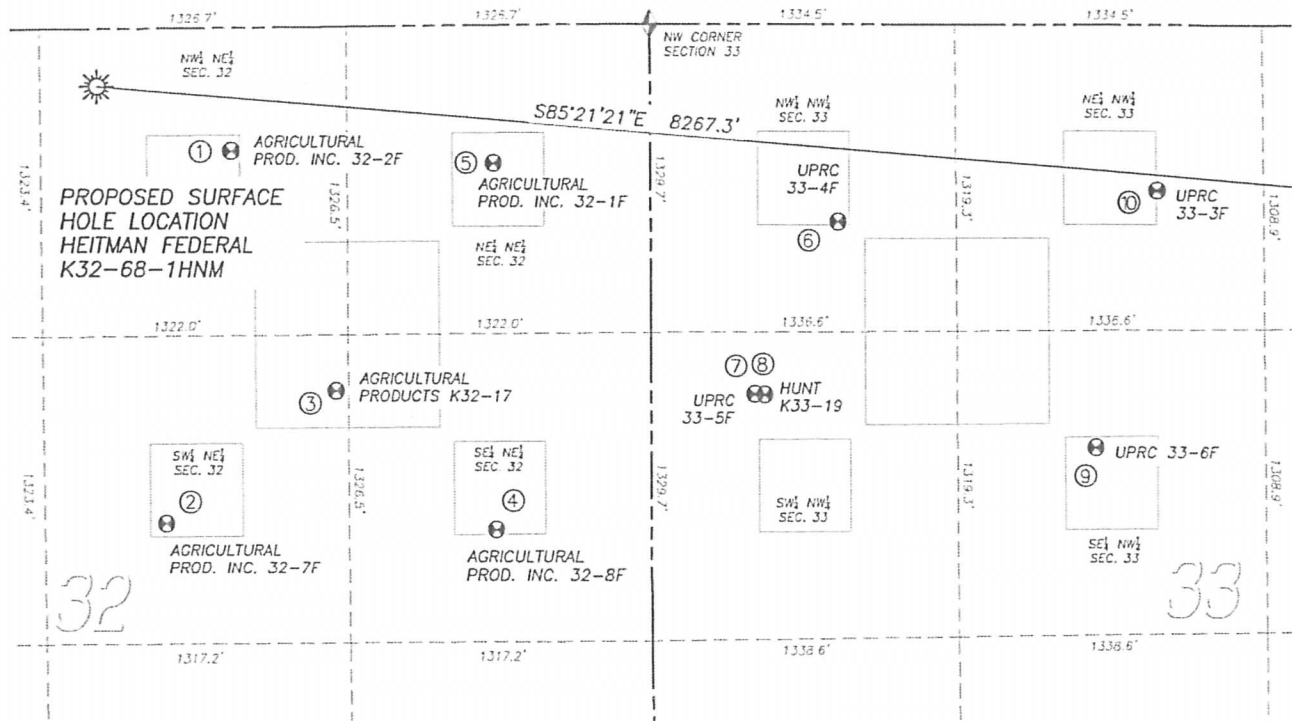
I HEREBY CERTIFY THAT THIS WELL LOCATION CERTIFICATE WAS PREPARED BY ME OR UNDER MY DIRECT SUPERVISION, THAT THE WORK WAS COMPLETED ON 1/21/2013 FOR AND ON BEHALF OF NOBLE ENERGY, INC., AND THAT THIS MAP DOES NOT REPRESENT A BOUNDARY SURVEY, IT IS NOT A LAND SURVEY PLAT OR AN IMPROVEMENT SURVEY PLAT AND IT IS NOT TO BE RELIED UPON FOR THE ESTABLISHMENT OF FENCE, BUILDING OR OTHER FUTURE IMPROVEMENT LINES.



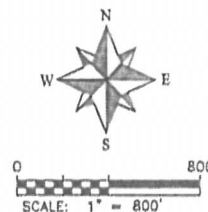
303 953 9841

## SITE SKETCH HEITMAN FEDERAL K32-68-1HNM

SECTION 32, TOWNSHIP 4 NORTH, RANGE 66 WEST OF THE 6TH PRINCIPAL MERIDIAN









	Well Name	Qtr - Qtr	Footage		Latitude	Longitude	Elevation	PDOP
1	AGRICULTURAL PROD. INC. 32-2F	NW NE 32	533' FNL	1825' FEL	40.27390	-104.79846	4771	1.4
2	AGRICULTURAL PROD. INC. 32-7F	SW NE 32	2130' FNL	2111' FEL	40.26951	-104.79951	4768	1.2
3	AGRICULTURAL PROD. INC. K32-17	SW NE 32	1568' FNL	1376' FEL	40.27106	-104.79687	4764	1.6
4	AGRICULTURAL PROD. INC. 32-8F	SE NE 32	2174' FNL	676' FEL	40.26941	-104.79437	4765	1.3
5	AGRICULTURAL PROD. INC. 32-1F	NE NE 32	597' FNL	686' FEL	40.27373	-104.79438	4763	1.3
6	UPRC 33-4F	NW NW 33	849' FNL	816' FWL	40.27302	-104.78900	4758	1.2
7	UPRC 33-5F	SW NW 33	1594' FNL	451' FWL	40.27099	-104.79032	4758	1.3
8	HUNT K33-19	SW NW 33	1597' FNL	494' FWL	40.27098	-104.79017	4759	1.3
9	UPRC 33-6F	SE NW 33	1820' FNL	1936' FWL	40.27033	-104.78501	4766	1.2
10	UPRC 33-3F	NE NW 33	714' FNL	2204' FWL	40.27336	-104.78403	4760	1.4



NOTES:  
1. THIS DOES NOT REPRESENT A BOUNDARY SURVEY  
2. HORIZONTAL DATUM IS NAD83  
3. VERTICAL DATUM IS NAVD88 AND ORIGINATES FROM THE  
LOCAL C.O.R.S. NETWORK, UTILIZING THE GEOID09 MODEL.

LEGEND

- |   |                                |
|---|--------------------------------|
|  | FOUND MONUMENT<br>AS DESCRIBED |
|  | PROPOSED WELL                  |
|  | EXISTING WELL                  |
|  | BOTTOM HOLE                    |
|  | ABANDONED WELL                 |
|  | CALCULATED POSITION            |

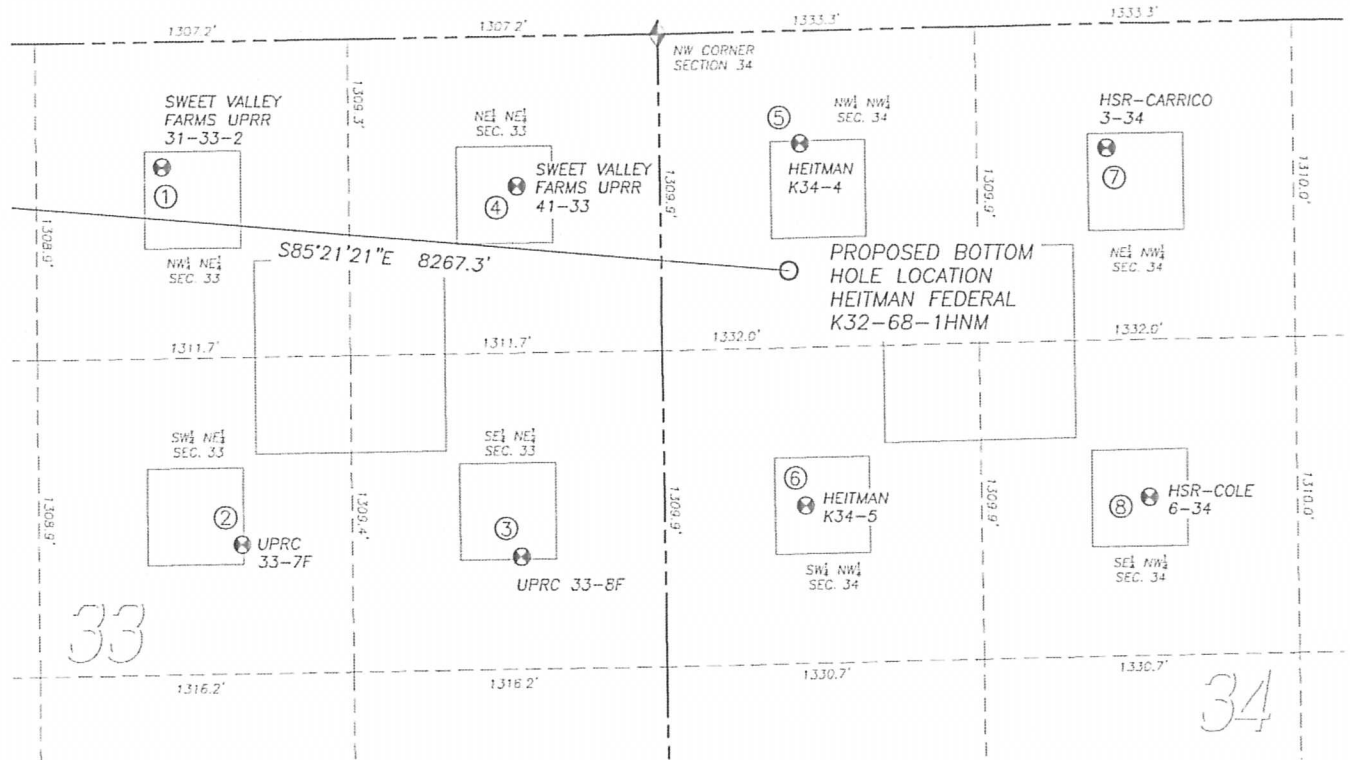
DALEY LAND SURVEYING, INC.

PARKER, CO. 80134

303 953 9841

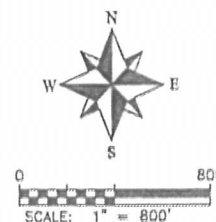
## SITE SKETCH HEITMAN FEDERAL K32-68-1HNM

SECTION 32, TOWNSHIP 4 NORTH, RANGE 66 WEST OF THE 6TH PRINCIPAL MERIDIAN



Well Name	Qtr - Qtr	Footage		Latitude	Longitude	Elevation	PDOP
1 SWEET VALLEY FARMS-UPRR 31-33-2	NW NE 33	520' FNL	2093' FEL	40.27388	-104.78047	4760	1.4
2 UPRC 33-7F	SW NE 33	2082' FNL	1778' FEL	40.26960	-104.77931	4776	1.4
3 UPRC 33-8F	SE NE 33	2152' FNL	605' FEL	40.26943	-104.77511	4784	1.4
4 SWEET VALLEY FARMS-UPRR 41-33	NE NE 33	620' FNL	603' FEL	40.27364	-104.77513	4767	1.4
5 HEITMAN K34-4	NW NW 34	466' FNL	592' FWL	40.27409	-104.77085	4767	1.5
6 HEITMAN K34-5	SW NW 34	1965' FNL	593' FWL	40.26998	-104.77082	4782	2.1
7 HSR-CARRICO 3-34	NE NW 34	514' FNL	1878' FWL	40.27401	-104.76624	4772	1.1
8 HSR-COLE 6-34	SE NW 34	1963' FNL	2035' FWL	40.27004	-104.76565	4782	1.3

NOTES:  
 1. THIS DOES NOT REPRESENT A BOUNDARY SURVEY  
 2. HORIZONTAL DATUM IS NAD83  
 3. VERTICAL DATUM IS NAVD88 AND ORIGINATES FROM THE LOCAL C.O.R.S. NETWORK, UTILIZING THE GEOID09 MODEL.



## LEGEND

- FOUND MONUMENT AS DESCRIBED
- PROPOSED WELL
- EXISTING WELL
- BOTTOM HOLE
- ABANDONED WELL
- CALCULATED POSITION