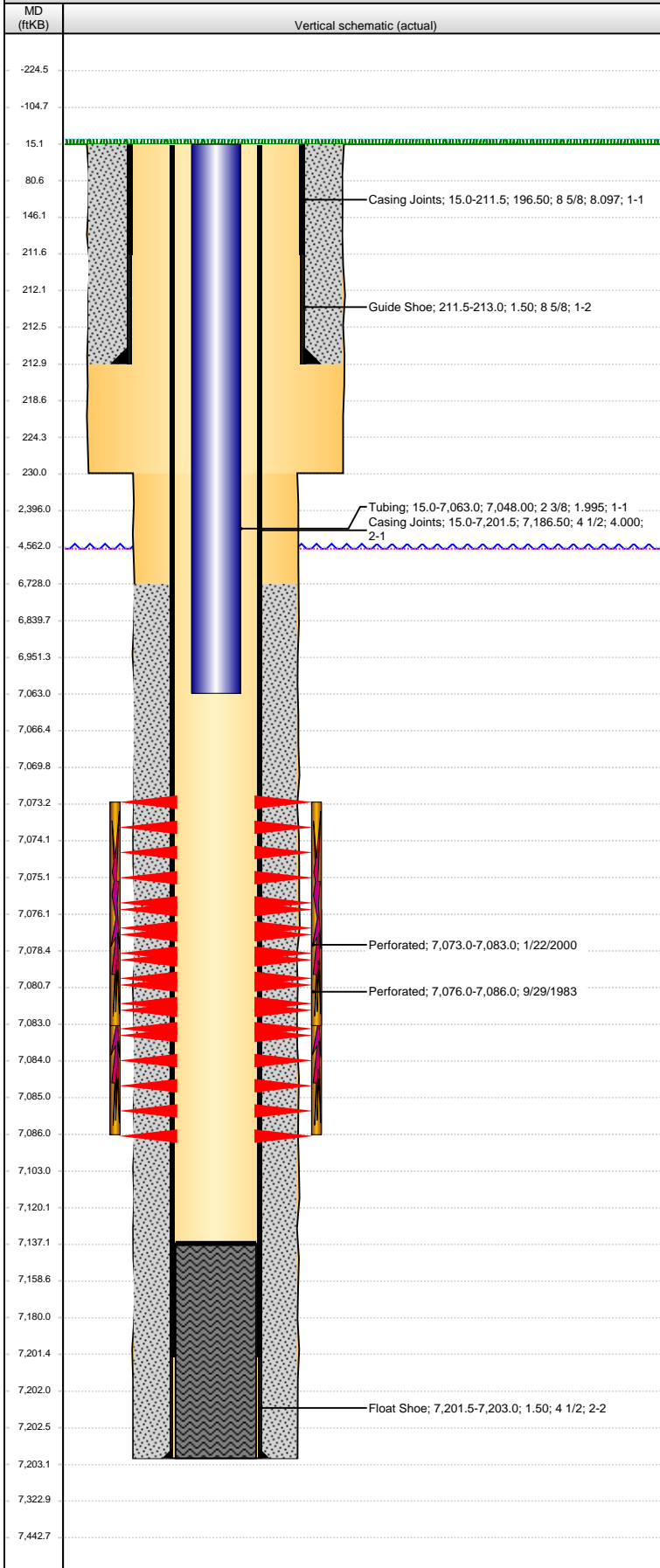


Well Name: TODD 09-01

VERTICAL - ORIGINAL HOLE, 7/23/2013 2:28:59 PM



Well Header

API	Business Unit	District	Well Config
05-123-11361	WATTENBERG	15	VERTICAL
Original KB Elevation (ft)	KB - GL / MSL (ftKB)	Spud Date	P & A Date
4,694.00	15.00	9/8/1983	

Comment
NO COMPLETION RPTS FOR CODELL RE-FRAC USED STATE AND TREATMENT RPTS TO VALIDATE DISCREPANCY ST RPT TD @7178', DRL PRT TD @7203'

Directions To Well

Congressional Location

Quarter 1	Quarter 2	Quarter 3	Quarter 4	Section	Township	Twtnsh N...	Range	Rng E/W Dir
		NE	NE	9	4	N	65	W

Bottom Hole Location

North-South Distance (ft)	From N or S Line	East-West Distance (ft)	From E or W Line

Plug Back Total Depths

Date	Depth (ftKB)	Method	Com
9/20/1983	7,137.0	CASED HOLE LOG	DEPTH LOGGER ON CBL

Wellbore Sections

Section Des	Size (in)	Act Top (ftKB)	Act Btm (ftKB)
SURFACE	12 1/4	15.0	230.0
PRODUCTION	7 7/8	230.0	7,203.0

Zone Statuses

Zone Name	Status Date	Status	Job
CODELL	10/30/1983	PR	DRILLING/COMPLETION - ORIGINAL, 9/8/1983 00:00
CODELL	1/25/2000	PR	RE-FRAC, 1/22/2000 00:00

Casing Strings

Surface, 213.0ftKB

Casing Description	Run Date	OD (in)	Wt/Len (l...)	Grade	Top (ftKB)	MD (ftKB)
Surface	9/8/1983	8 5/8	24.00	?	15.0	213.0

Production, 7,203.0ftKB

Casing Description	Run Date	OD (in)	Wt/Len (l...)	Grade	Top (ftKB)	MD (ftKB)
Production	9/14/1983	4 1/2	11.60	?	15.0	7,203.0

Cement

Description	Top Depth (ftKB)	Bottom Depth (ftKB)
SURFACE CASING CEMENT	15.0	213.0
Description	Top Depth (ftKB)	Bottom Depth (ftKB)
PRODUCTION CASING CEMENT	6,728.0	7,203.0

Tubing Components

Item Des	OD (in)	Wt (lb/ft)	Grade	Jts	Len (ft)	Btm (ftKB)	Btm (TVD) (ftKB)
Tubing	2 3/8	4.70	J-55	219	7,048.00	7,063.0	

Perforation Data

Zone	Bnch/St g	Entered Shot Total	Top (ftKB)	Btm (ftKB)	Date
CODELL, ORIGINAL HOLE		40	7,073.00	7,083.00	1/22/2000
CODELL, ORIGINAL HOLE		21	7,076.00	7,086.00	9/29/1983

Stimulations & Treatments

Date	Zone	Primary Job Type
10/4/1983	CODELL, ORIGINAL HOLE	DRILLING/COMPLETION - ORIGINAL
Technical Result	Tech Result Details	Tech Result Note
Failure	Screen-Out	

Comment
BROKE DOWN AT 5300 PSI @ 8 BPM. TREATED NORMAL UNTIL END OF 3#/GAL STAGE, SCREEN OUT

Date	Zone	Primary Job Type
1/24/2000	CODELL, ORIGINAL HOLE	RE-FRAC
Technical Result	Tech Result Details	Tech Result Note

Other In Hole

Run Date	Des	OD (in)	Top (ftKB)	Btm (ftKB)

Logs

Date	Type	Top (ftKB)	Btm (ftKB)
9/13/1983	COMPENSATED DENSITY	4,250.0	7,178.0
9/13/1983	INDUCTION	214.0	7,176.0

Well Name: TODD 09-01

VERTICAL - ORIGINAL HOLE, 7/23/2013 2:29:02 PM

Logs

Date	Type	Top (ftKB)	Btm (ftKB)
9/20/1983	CEMENT BOND	4,421.0	7,129.0
10/3/1983	TEMPERATURE LOG	6,950.0	7,140.0

