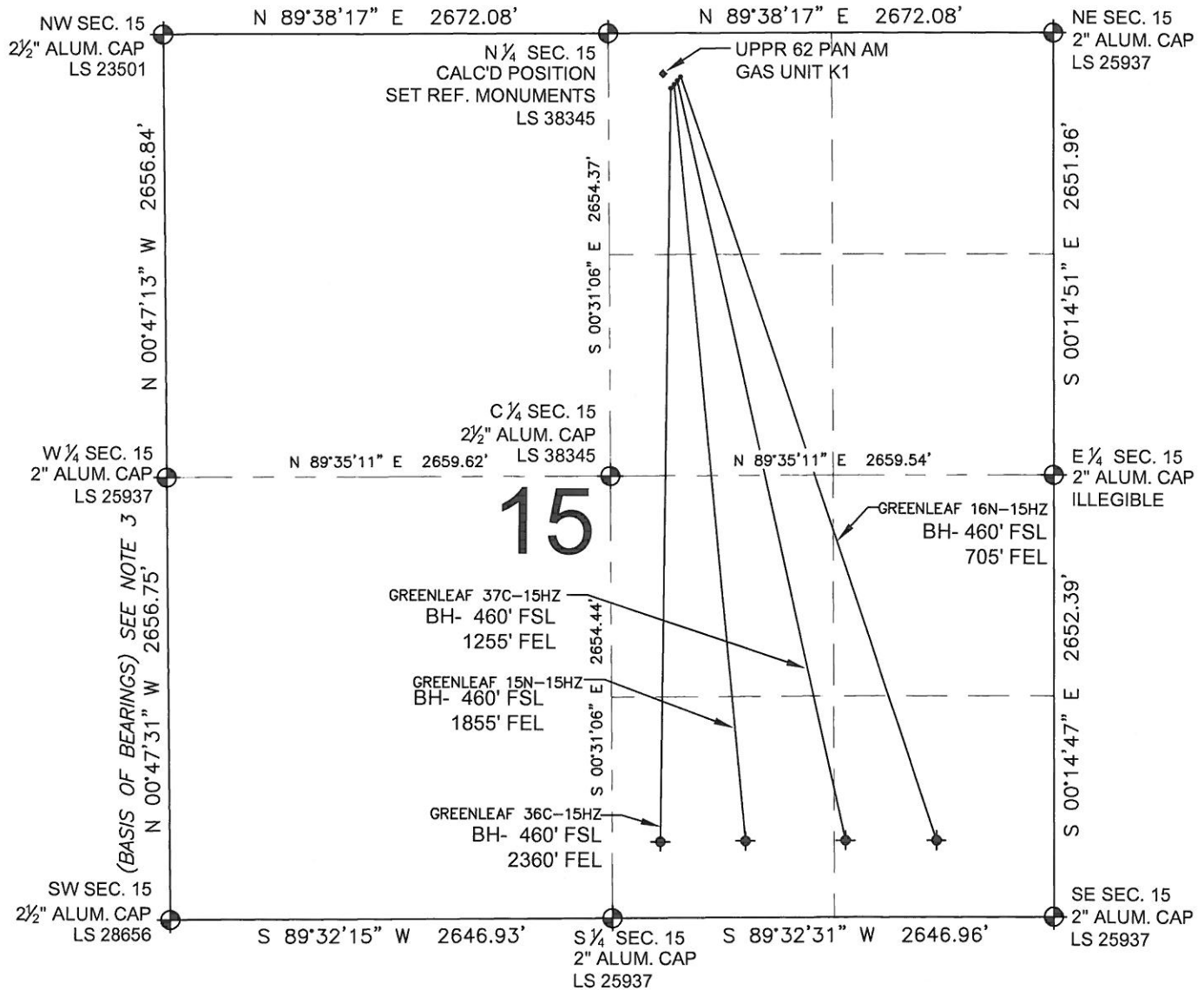


GREENLEAF 15N-15HZ MULTI-WELL PLAN

SECTION 15, TOWNSHIP 2 NORTH, RANGE 65 WEST, 6TH P.M.



NOTES:

GREENLEAF 36C-15HZ TO BE AT 330' FNL, 2298' FEL.
BOTTOM HOLE AT 460' FSL & 2360' FEL.
GREENLEAF 15N-15HZ TO BE AT 307' FNL, 2278' FEL.
BOTTOM HOLE AT 460' FSL & 1855' FEL.
GREENLEAF 37C-15HZ TO BE AT 284' FNL, 2259' FEL.
BOTTOM HOLE AT 460' FSL & 1255' FEL.
GREENLEAF 16N-15HZ TO BE AT 261' FNL, 2240' FEL.
BOTTOM HOLE AT 460' FSL & 705' FEL.
EXISTING WELL UPPR 62 PAN AM GAS UNIT K1
IS LOCATED AT 244' FNL, 2340' FEL.

LEGEND

- ◆ = EXISTING MONUMENT
- = PROPOSED WELL
- ◆ = BOTTOM HOLE
- ◆ = EXISTING WELL
- BH= BOTTOM HOLE

PREPARED BY:



KERR-MCGEE OIL & GAS ONSHORE LP

FIELD DATE:

05-19-12

DRAWING DATE:

06-25-13

SURFACE LOCATION:

NW 1/4 NE 1/4, SEC. 15, T2N, R65W, 6TH P.M.

WELD COUNTY, COLORADO

