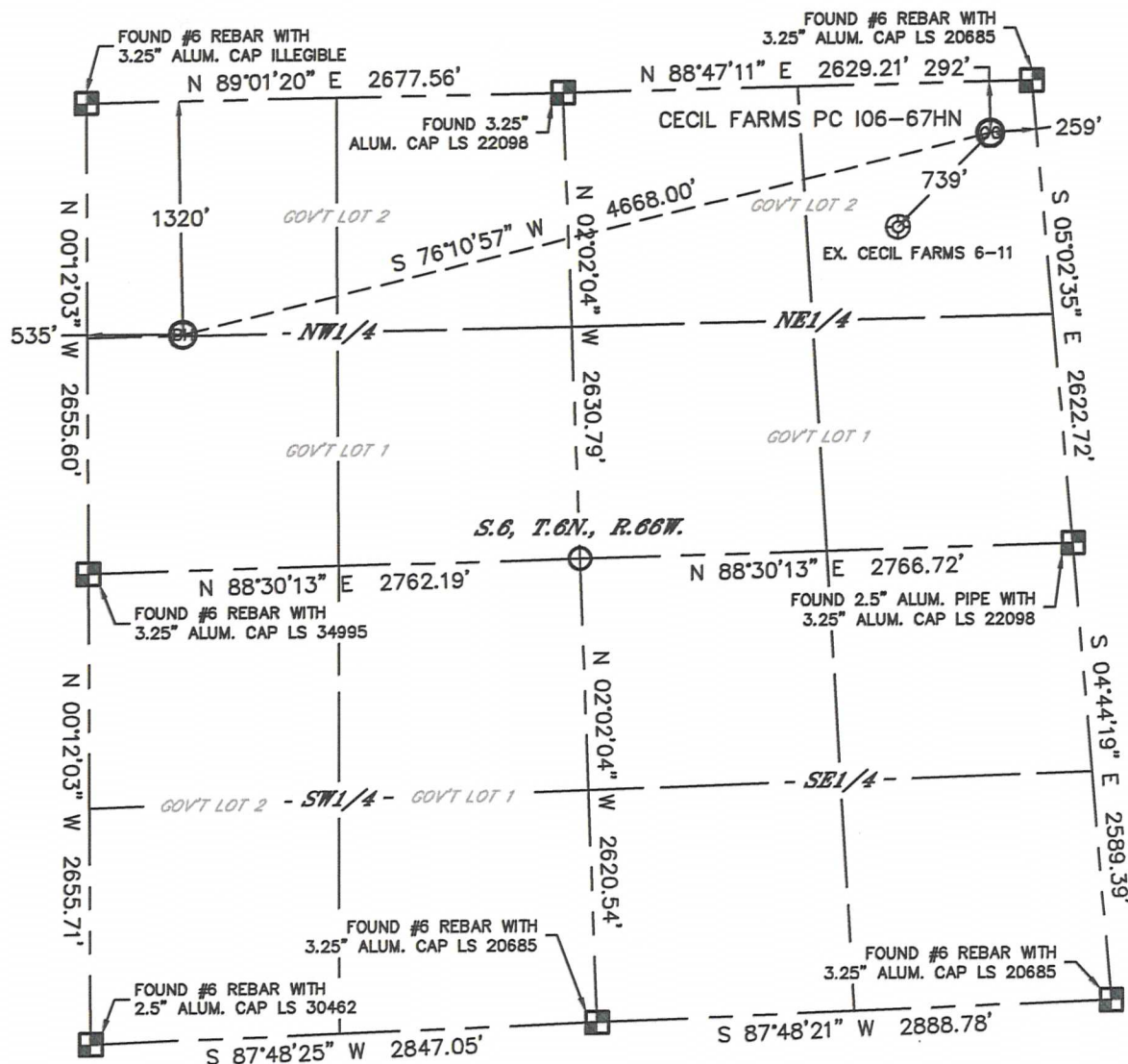


# WELL LOCATION CERTIFICATE

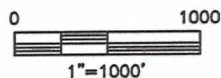
THIS MAP DOES NOT REPRESENT A BOUNDARY SURVEY

SECTION: 6  
TOWNSHIP: 6N  
RANGE: 66W



In accordance with a request from Jacob Rice with Noble Energy Inc. Lat40°, Inc. has determined the surface location of the CECIL FARMS PC 106-67HN to be 292' from the NORTH line and 259' from the EAST line and the bottom hole to be 1320' from the NORTH line and 535' from the WEST line as measured at right angles from the section lines of Section 6, Township 6 North, Range 66 West of the Sixth Principal Meridian, County of Weld, State of Colorado.

I hereby state that this Well Location Certificate was prepared by me, or under my direct supervision, that the fieldwork was completed on 6/20/2013, for and on behalf of Noble Energy Inc. That this is not a Land Survey Plat or an Improvement Survey Plat, and that it is not to be relied upon for establishment of fence, building, or other future improvement lines.



## NOTE:

- 1) Bearings shown are Grid Bearings of the Colorado State Plane Coordinate System, North Zone, North American Datum 1983/2007. The lineal dimensions as contained herein are based upon the "U.S. Survey Foot."
- 2) Ground elevations are based on an observed GPS elevation (NAVD 1988 DATUM).
- 3) NEAREST EXISTING WELL: CECIL FARMS 6-11, 739'
- 4) IMPROVEMENTS: See LOCATION DRAWING for all visible improvements within 400' of disturbed area.
- 5) SURFACE USE: CROP FIELD
- 6) INSTRUMENT OPERATOR: BRIAN BONIFACE

## SURFACE LOCATION

LAT: 40.52283°N  
LONG: 104.81398°W  
PDOP: 1.7  
ELEV: 4870'  
1/4, 1/4: NE 1/4 NE 1/4 (GOV'T LOT 2)  
NEAREST PROPERTY LINE: 259' E

## BOTTOM HOLE

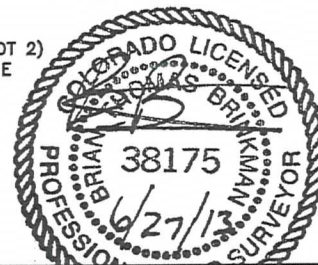
LAT: 40.51987°N  
LONG: 104.83031°W

## NOTE

According to Colorado law, you must commence any legal action based upon any defect in this W.L.C. within three years after you discover such defect. In no event, may any action based upon any defect in this survey be commenced more than ten years after the date of the certificate shown hereon. (13-80-105 C.R.S.)

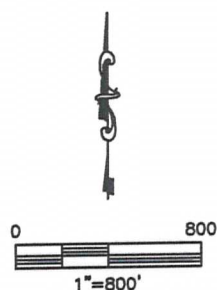
## LEGEND

- = ALIQUOT MONUMENT AS DESCRIBED
- = CALCULATED POSITION



Brian T. Brinkman—On 6/27/13 for Lat40°, Inc.  
Colorado Licensed Professional Surveyor No. 38175  
DATE: 6/27/2013  
PROJECT#: 2012022

SECTION: 6  
TOWNSHIP: 6N  
RANGE: 66W



DATE: 6/27/2013  
PROJECT#: 2012022