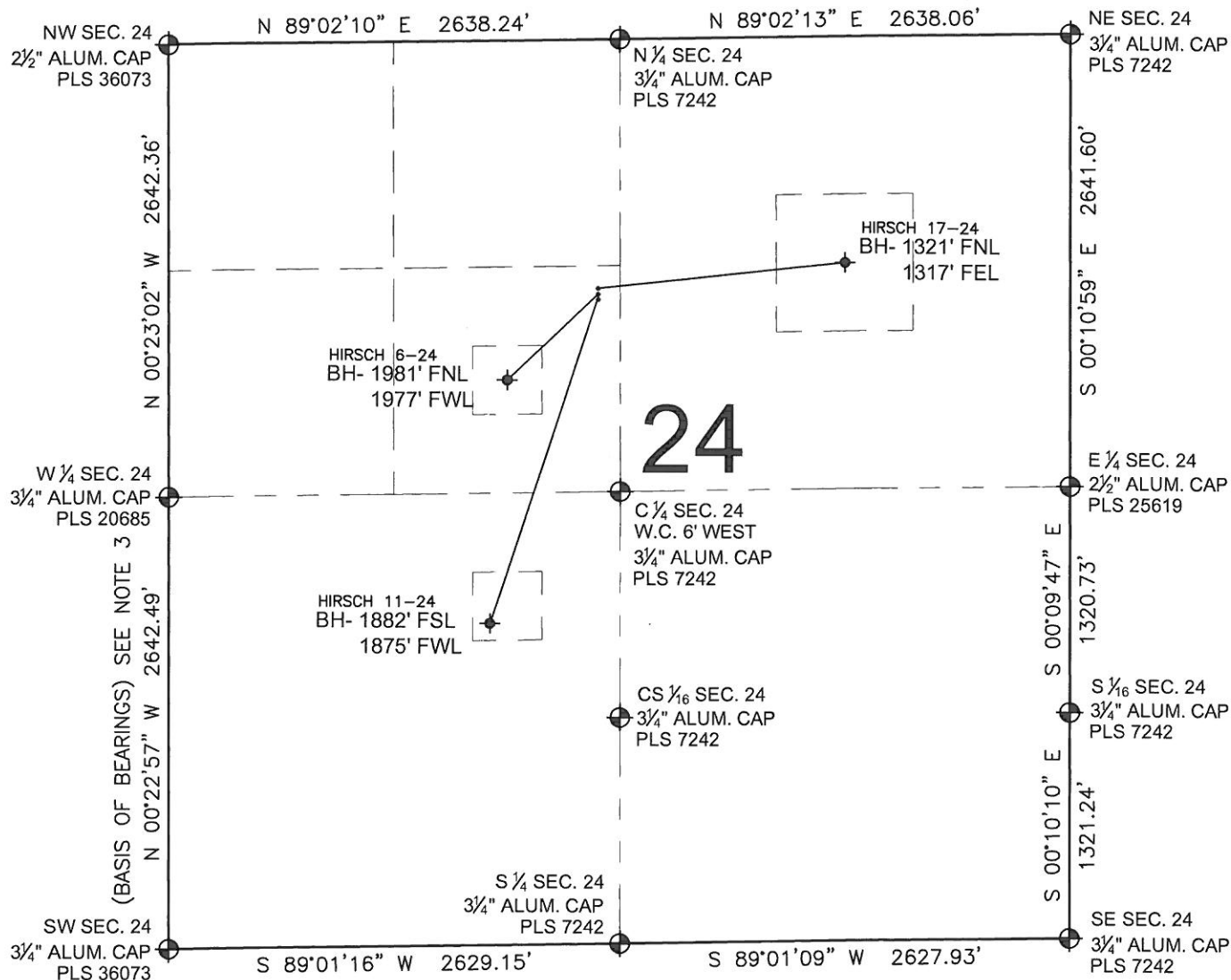


# PAD DRAWING: HIRSCH 24-G PAD

SECTION 24, TOWNSHIP 7 NORTH, RANGE 67 WEST, 6TH P.M.



## NOTES:

1. THIS FIELD SURVEY CONFORMS TO THE MINIMUM STANDARDS SET BY THE C.O.G.C.C., RULE NO. 215
2. HORIZONTAL POSITIONS AND ORTHOMETRIC ELEVATIONS SHOWN AT THE WELL HEAD, ARE BASED ON GPS-RTK POSITIONS DERIVED FROM MINIMUM 2-HOUR STATIC OBSERVATIONS CORRECTED BY THE NATIONAL GEODETIC SURVEY ONLINE POSITIONING USER SERVICE, O.P.U.S. DATUM: HORIZONTAL = NAD83/2011, VERTICAL = NAVD88
3. THE BASIS OF BEARINGS ARE STATE PLANE COORDINATE SYSTEM GRID BEARINGS SHOWN HEREON BETWEEN THE DESCRIBED MONUMENTS SHOWN HEREON.
4. GRID DISTANCES ARE SHOWN, AS MEASURED IN THE FIELD, WITH TIES TO WELLS MEASURED PERPENDICULAR TO SECTION LINES.

## LEGEND

- = EXISTING MONUMENT   
 = BOTTOM HOLE   
 BH= BOTTOM HOLE  
 = PROPOSED WELL   
 = EXISTING WELL

## NOTES:

HIRSCH 17-24 TO BE AT 1471' FNL, 2508' FWL.  
 BOTTOM HOLE AT 1321' FNL & 1317' FEL.  
 HIRSCH 6-24 TO BE AT 1486' FNL, 2508' FWL.  
 BOTTOM HOLE AT 1981' FNL & 1977' FWL.  
 HIRSCH 11-24 TO BE AT 1501' FNL, 2508' FWL.  
 BOTTOM HOLE AT 1882' FSL & 1875' FWL.

PREPARED BY:



BAYSWATER EXPLORATION & PRODUCTION, LLC

FIELD DATE: 05-23-13	PAD NAME: HIRSCH 24-G PAD
DRAWING DATE: 06-11-13	SURFACE LOCATION: SE 1/4 NW 1/4, SEC. 24, T7N, R67W, 6TH P.M. WELD COUNTY, COLORADO
BY: KAD	CHECKED: MLP

