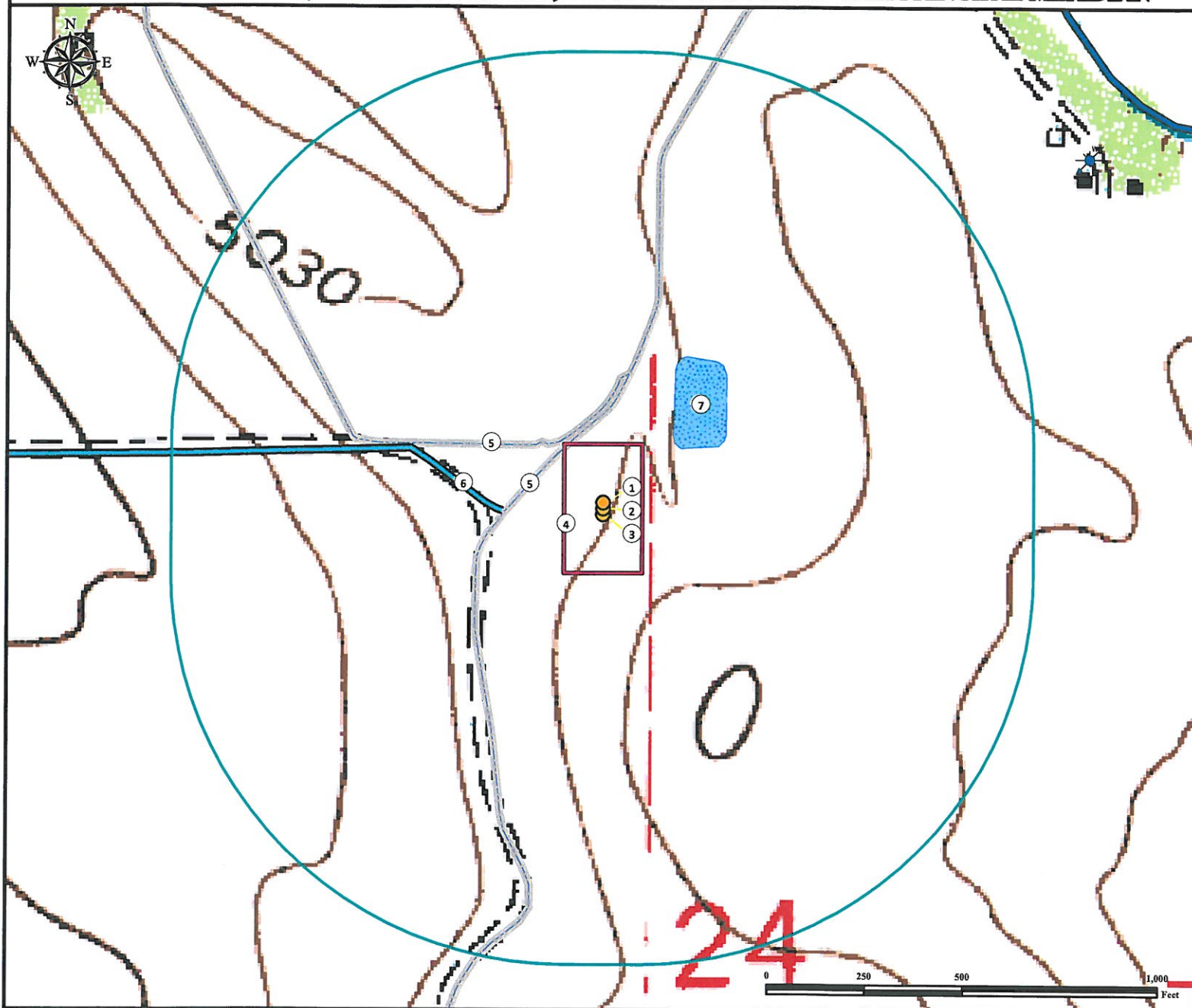


Hydrology Map

HIRSCH 24-G Pad

Horizontal Multi Well Pad

SE¼ NW¼ SECTION 24, TOWNSHIP 7 NORTH, RANGE 67 WEST OF THE 6TH PRINCIPAL MERIDIAN



- | | |
|----------------------------------|--|
| 1. Proposed Well HIRSCH 17-24. | 5. Concrete Ditches are ±181' NW and ±204' NW. |
| 2. Proposed Well HIRSCH 6-24. | 6. Ditch is ±257' W. |
| 3. Proposed Well HIRSCH 11-24. | 7. Water Storage Pond is ±248' NE. |
| 4. Operational Disturbance Area. | |

Legend

- | | | | |
|------------------|--------------|-------|----------------|
| Proposed Well | 1000' Radius | Ditch | Concrete Ditch |
| Disturbance Area | Pond | Canal | Water Well |

Reference Location

** All measurements are made from Reference Well HIRSCH 6-24 **

Lat: 40.562857° Long: -104.841838° (NAD83)
Elevation: 5035 Feet



Use our resources to find yours!
www.petro-fs.com
(303) 928-7128

Field Date: 05/23/2013
Drafting Date: 06/10/2013
Drafter: JLF
Revision:

Data Sources:
- TOPO courtesy USGS

Prepared for:



BAYSWATER
EXPLORATION AND PRODUCTION, LLC