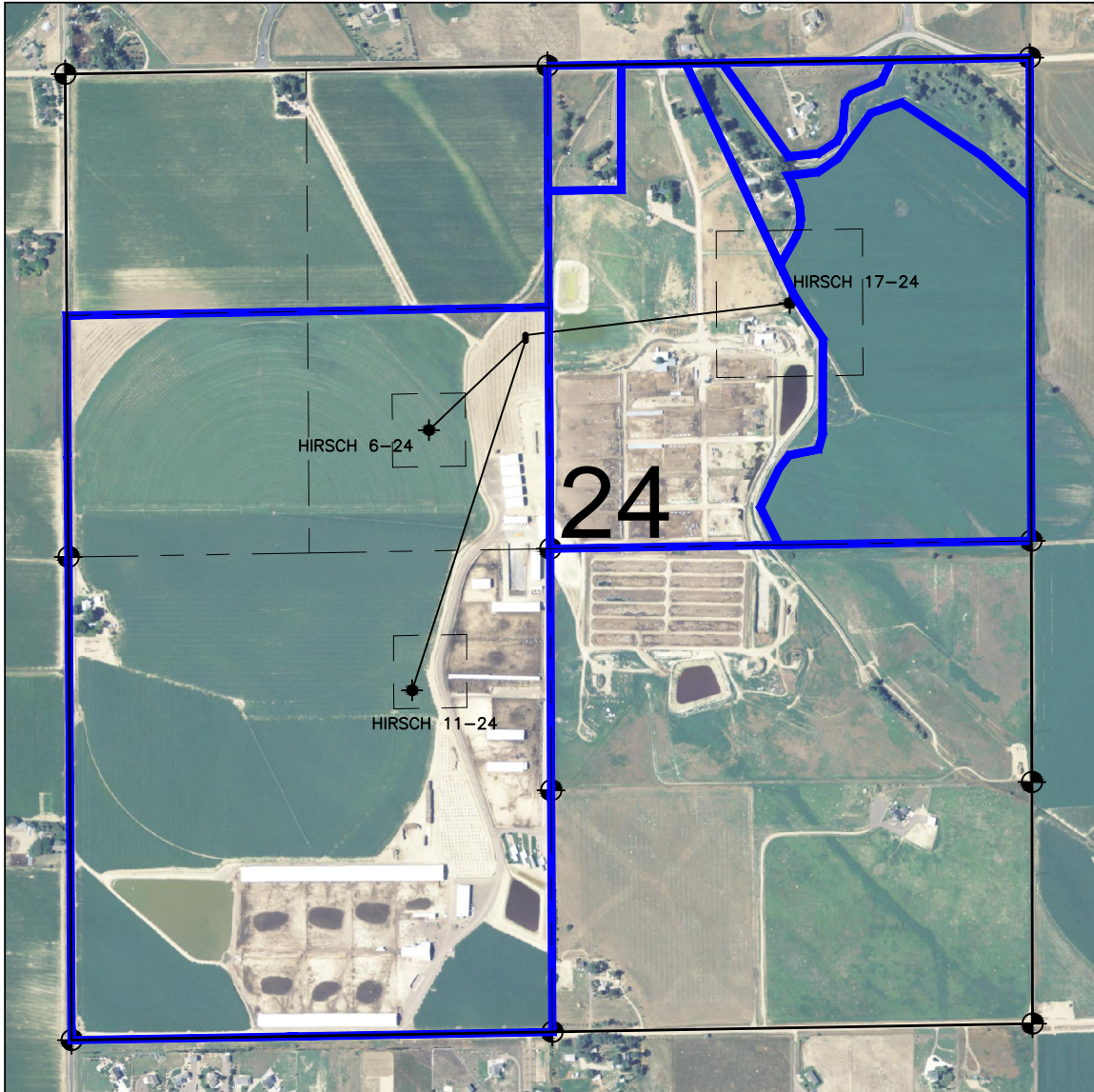


LEASE DRAWING: HIRSCH 24-G PAD



LEGEND

- = EXISTING MONUMENT
 = BOTTOM HOLE
 BH= BOTTOM HOLE
 = PROPOSED WELL
 = EXISTING WELL

NOTES:

HIRSCH 17-24 TO BE AT 1471' FNL, 2508' FWL.
 BOTTOM HOLE AT 1321' FNL & 1317' FEL.
 HIRSCH 6-24 TO BE AT 1486' FNL, 2508' FWL.
 BOTTOM HOLE AT 1981' FNL & 1977' FWL.
 HIRSCH 11-24 TO BE AT 1501' FNL, 2508' FWL.
 BOTTOM HOLE AT 1882' FSL & 1875' FWL.

PREPARED BY:



BAYSWATER EXPLORATION & PRODUCTION, LLC

FIELD DATE:
05-23-13

DRAWING DATE:
07-02-13

BY:
KAD

PAD NAME:
HIRSCH 24-G PAD

SURFACE LOCATION:
SE 1/4 NW 1/4, SEC. 24, T7N, R67W, 6TH P.M.
WELD COUNTY, COLORADO

