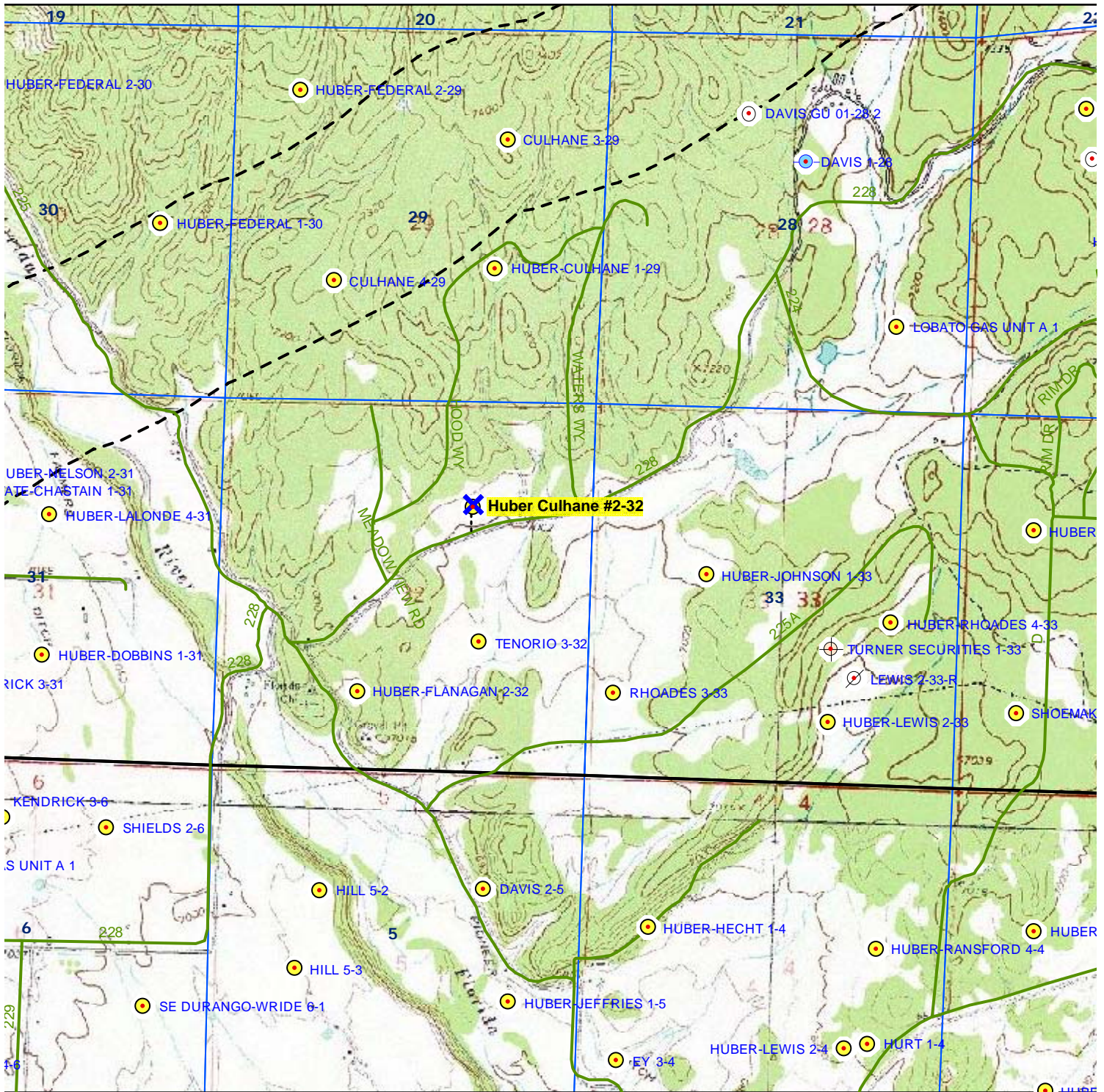


TOPOGRAPHIC MAP



- X Proposed Well
- Producing
- ⊕ Plugged & Abandoned
- ⊗ Abandoned Location
- ⊖ Shut-In
- ◆ Pending Permits
- Permits

HUBER CULHANE #2-32
1,503' FNL & 1,703' FEL
SWNE SEC. 32, T35N, R8W, N.M.P.M.
LA PLATA COUNTY, CO



Scale 1" = 2,000'