



# DLD

## GAMMA RAY TEMPERATURE LOG

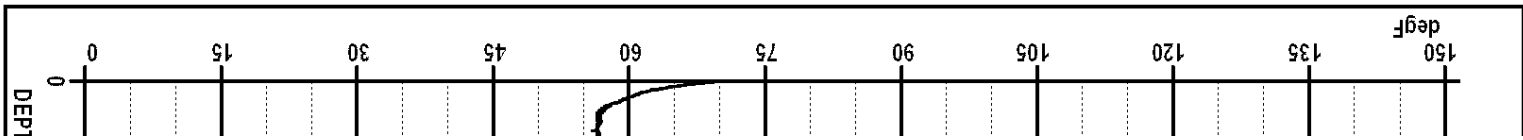
### PIPE RECOVERY SERVICES

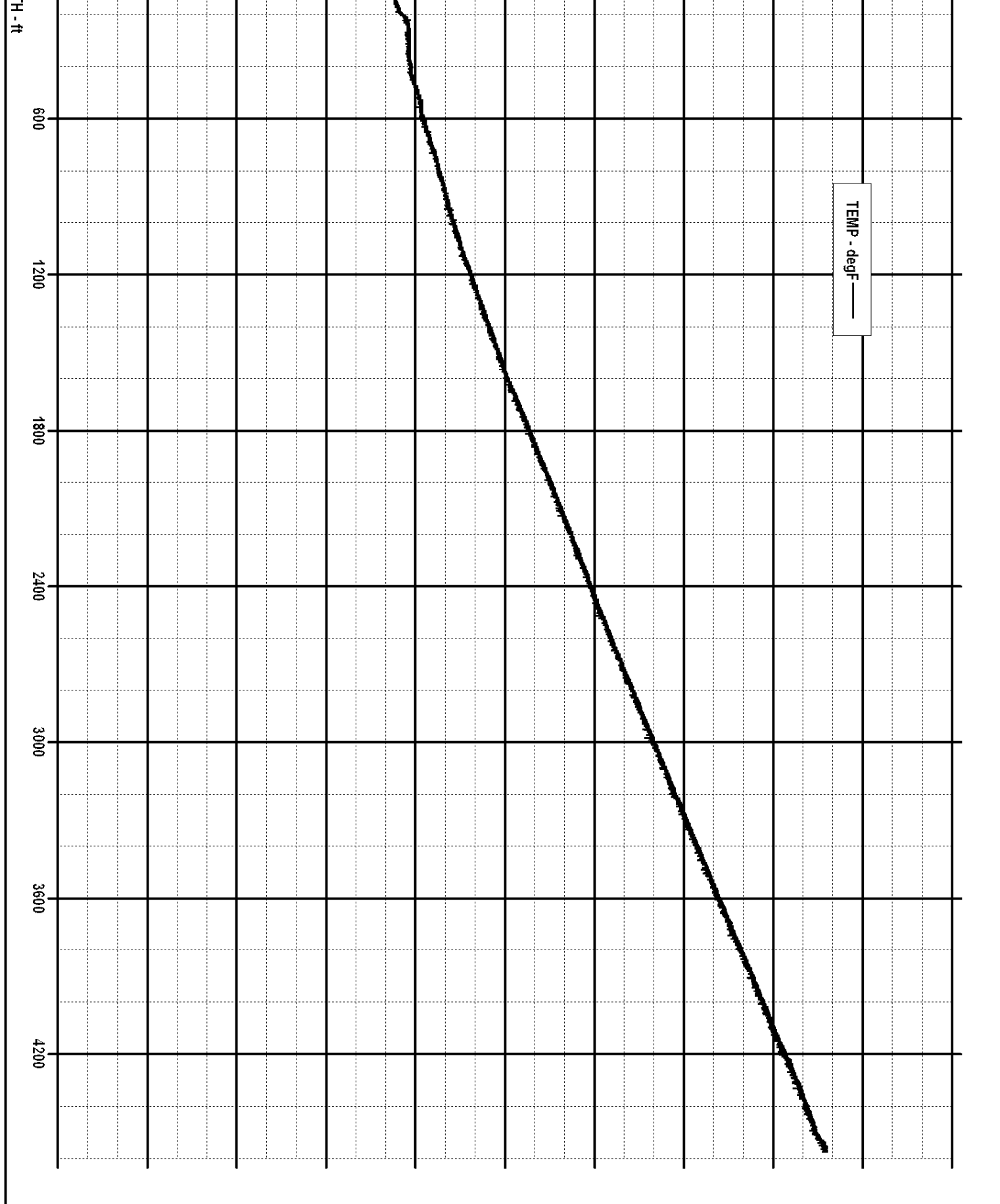
Company		MAGNA ENERGY		Company		MAGNA ENERGY	
Well		BISCUIT RANCH 31		Well		BISCUIT RANCH 31	
Field				Field			
County		GARFIELD		County		GARFIELD	
State		COLORADO		State		COLORADO	
Location:		API # : 05-045-11424		Other Services		JB/GR	
Permanent Datum		SEC 31 TWP 5S RGE 92W		Elevation			
Log Measured From				K.B.			
Drilling Measured From				D.F.			
				G.L.			
Date	JULY 1, 2013						
Run Number	One						
Depth Driller	4586'						
Depth Logger	4566'						
Bottom Logged Interval	4570'						
Top Log Interval	0						
Open Hole Size	Water						
Type Fluid							
Density / Viscosity	128 Deg. F.						
Max. Recorded Temp.							
Estimated Cement Top							
Time Well Ready							
Time Logger on Bottom	Unit #1						
Equipment Number	Grand Junction						
Location	D. Daniels						
Recorded By	D. Norton						
Witnessed By							
Borehole Record				Tubing Record			
Run Number	Bit	From	To	Size	Weight	From	To
Casing Record	Size		Wgt/Ft	Top		Bottom	
Surface String							
Prot. String							
Production String							
Liner							

>>>> Fold Here <<<<

All interpretations are opinions based on inferences from electrical or other measurements and we cannot and do not guarantee the accuracy or correctness of any interpretation, and we shall not, except in the case of gross or willful negligence on our part, be liable or responsible for any loss, costs, damages, or expenses incurred or sustained by anyone resulting from any interpretation made by any of our officers, agents or employees. These interpretations are also subject to our general terms and conditions set out in our current Price Schedule.

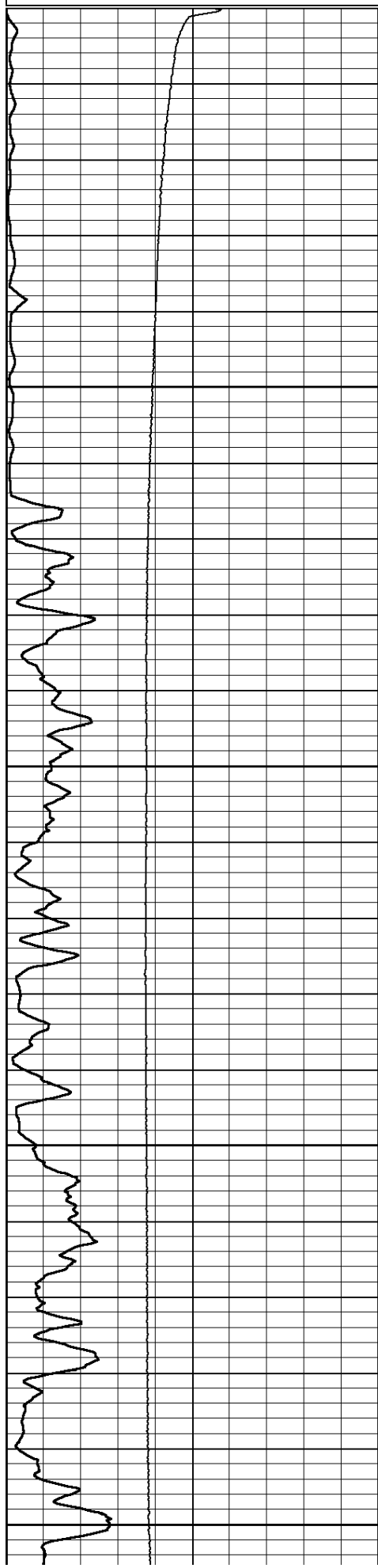
### Comments





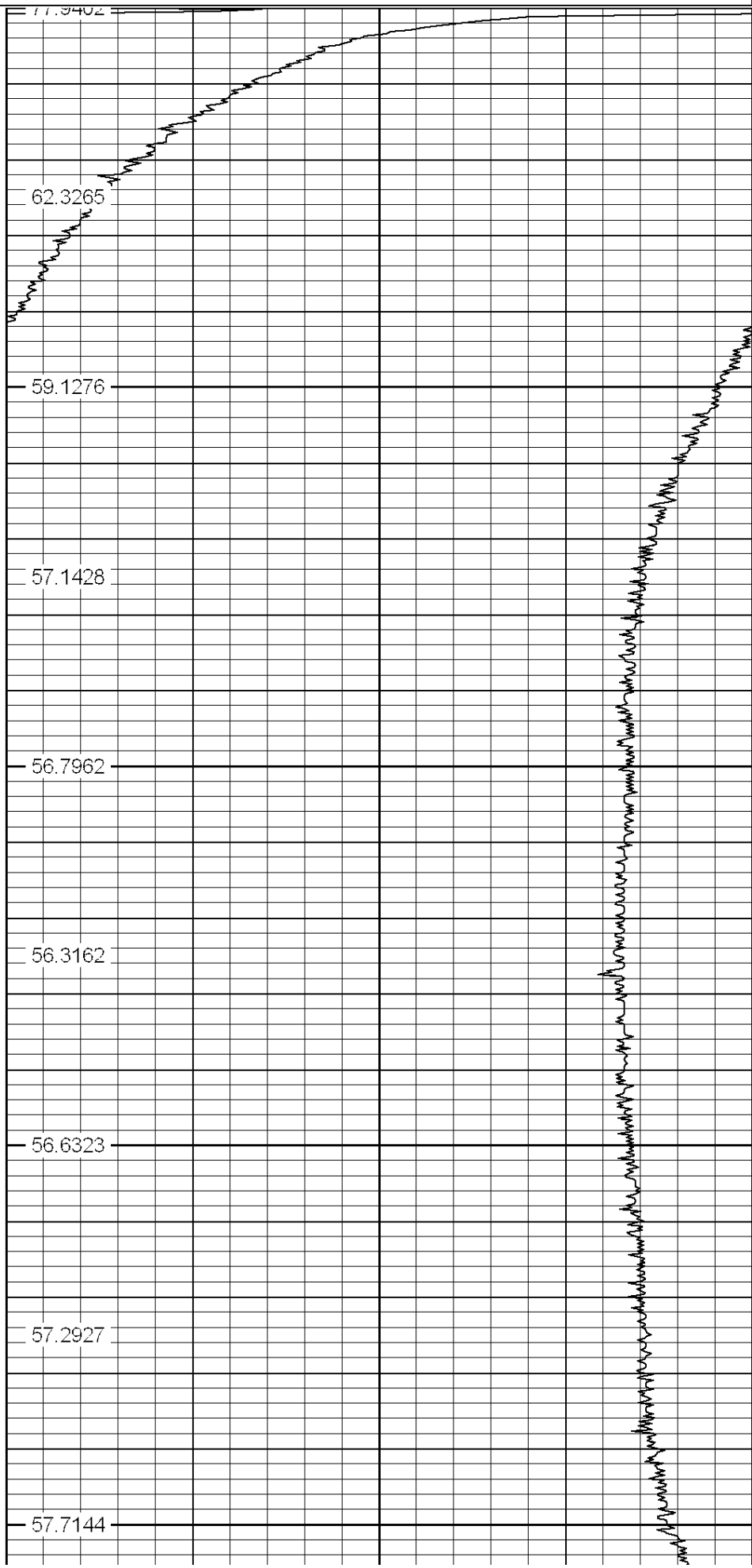
Database File: july012013.db  
Dataset Pathname: magna/run1/pass4  
Presentation Format: temp  
Dataset Creation: Mon Jul 01 08:27:55 2013 by Log Std Casedhole 09061  
Charted by: Depth in Feet scaled 1:240

0	GR	200
0	TEMP (degF)	150

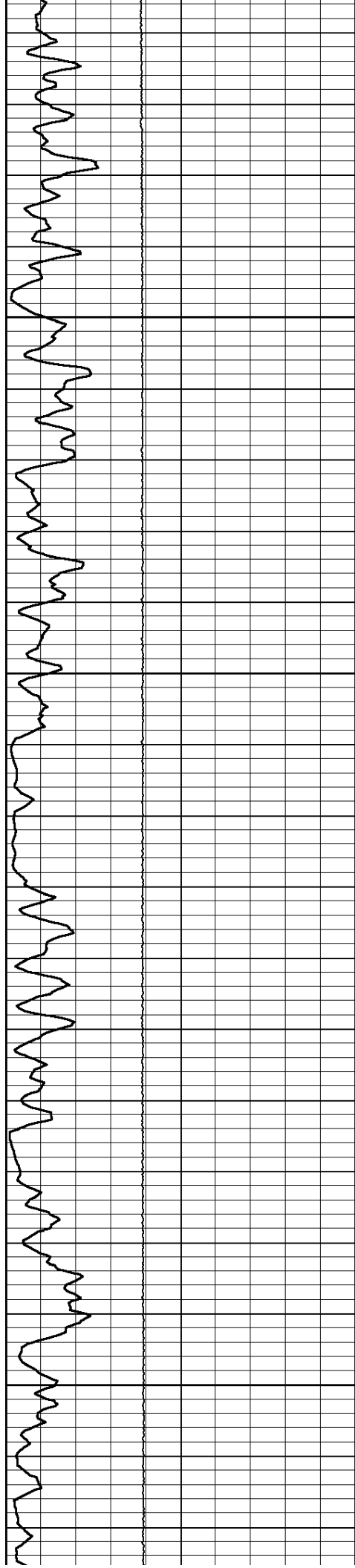


0  
50  
100  
150  
200

60	TEMP (degF)	80
TEMP		



77.9402  
62.3265  
59.1276  
57.1428  
56.7962  
56.3162  
56.6323  
57.2927  
57.7144



250

300

350

400

58.5918

58.6324

58.8267

58.9999

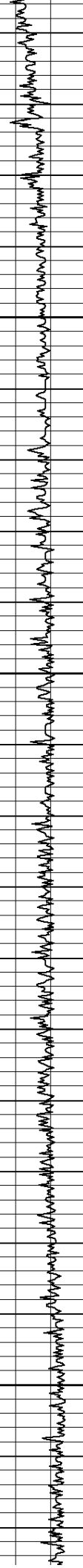
58.6629

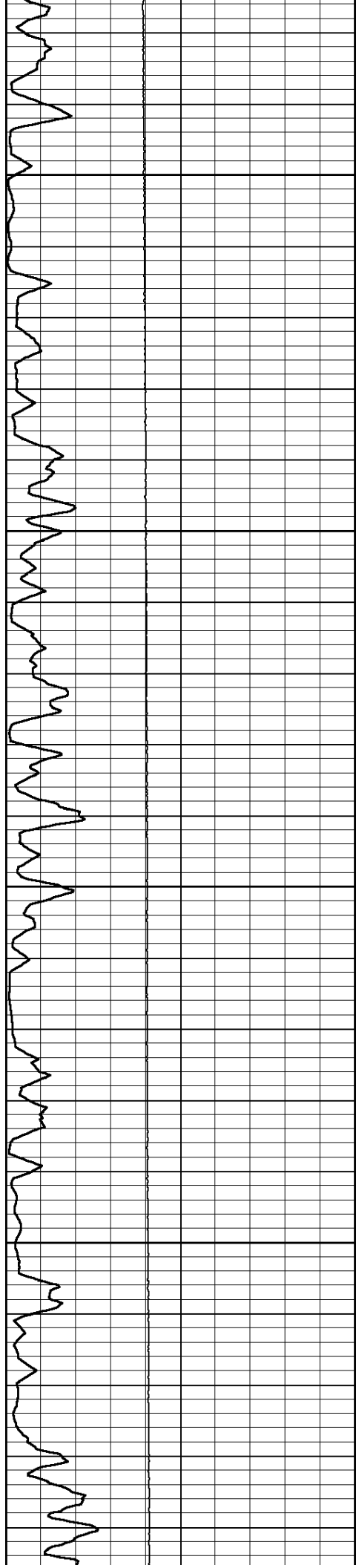
59.0515

58.8877

59.3677

59.3373



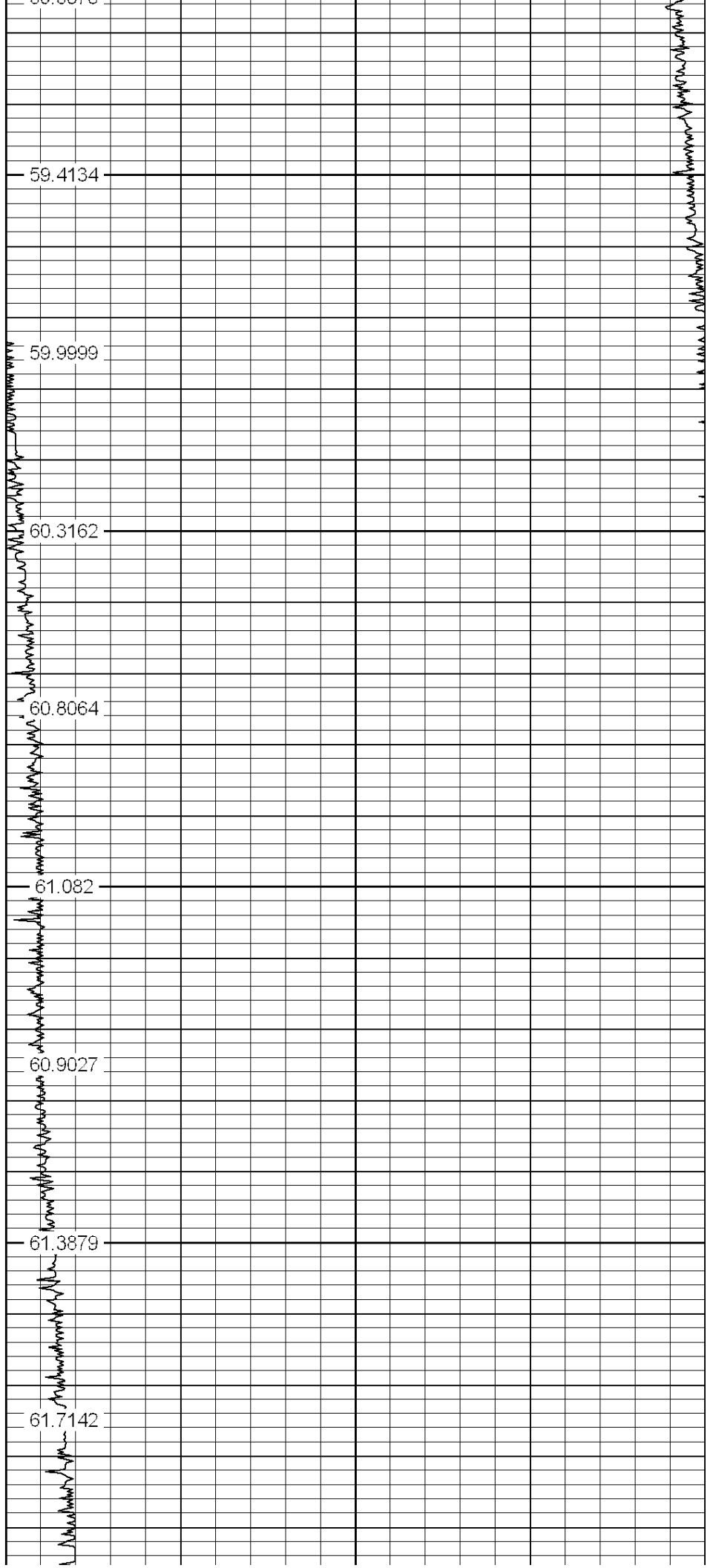


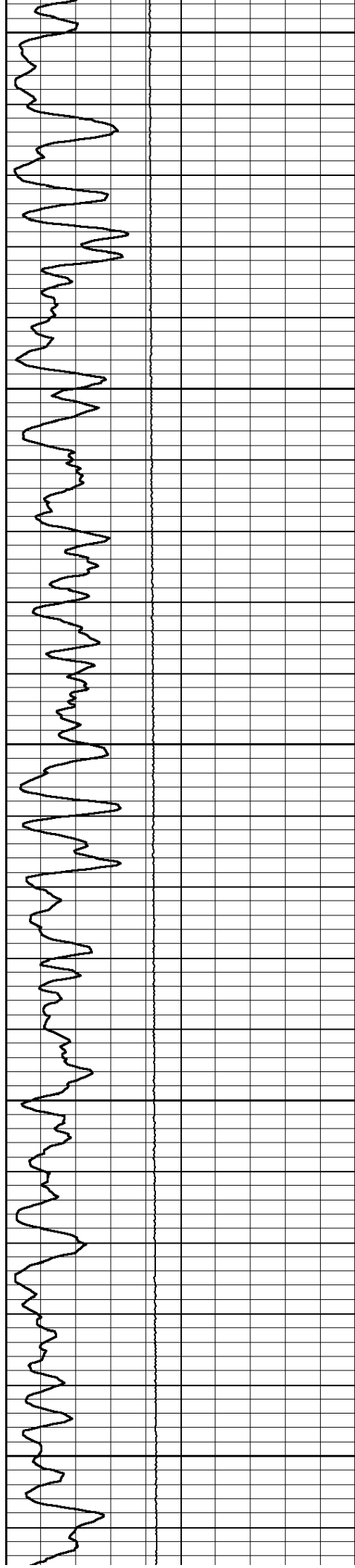
450

500

550

600





650

700

750

800

850

62.0001

62.291

62.7658

62.8339

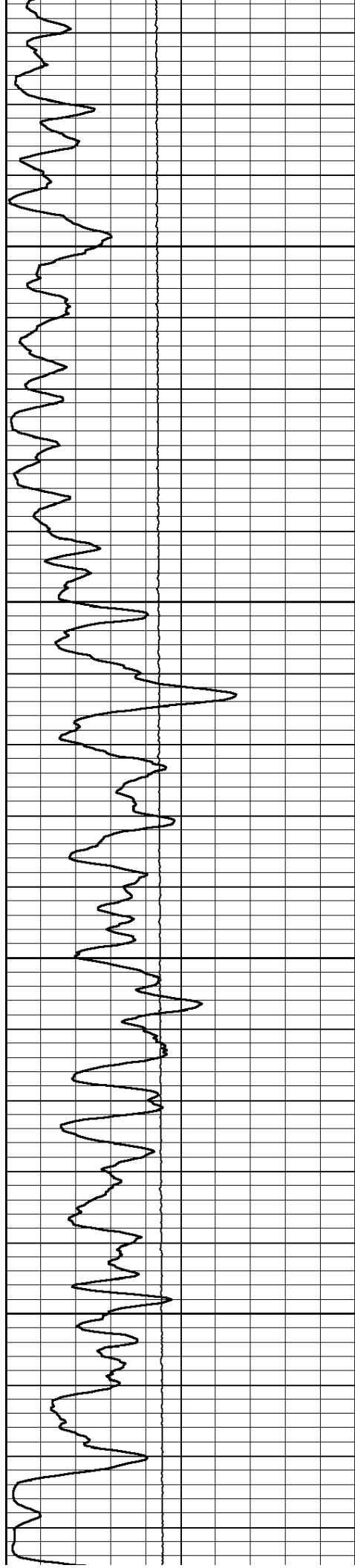
63.4488

63.722

63.7729

63.8058

64.6019



900

950

1000

1050

65.0819

64.8979

65.3983

65.52

66.2623

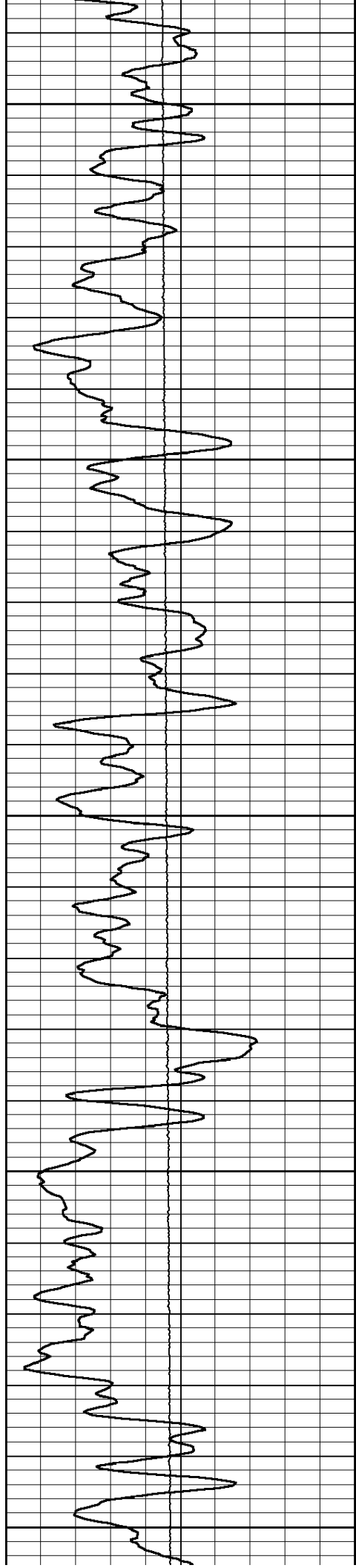
66.5105

66.6019

67.1427

67.4058





1100

67.8783

67.9697

1150

68.5903

68.9544

1200

69.3675

69.6953

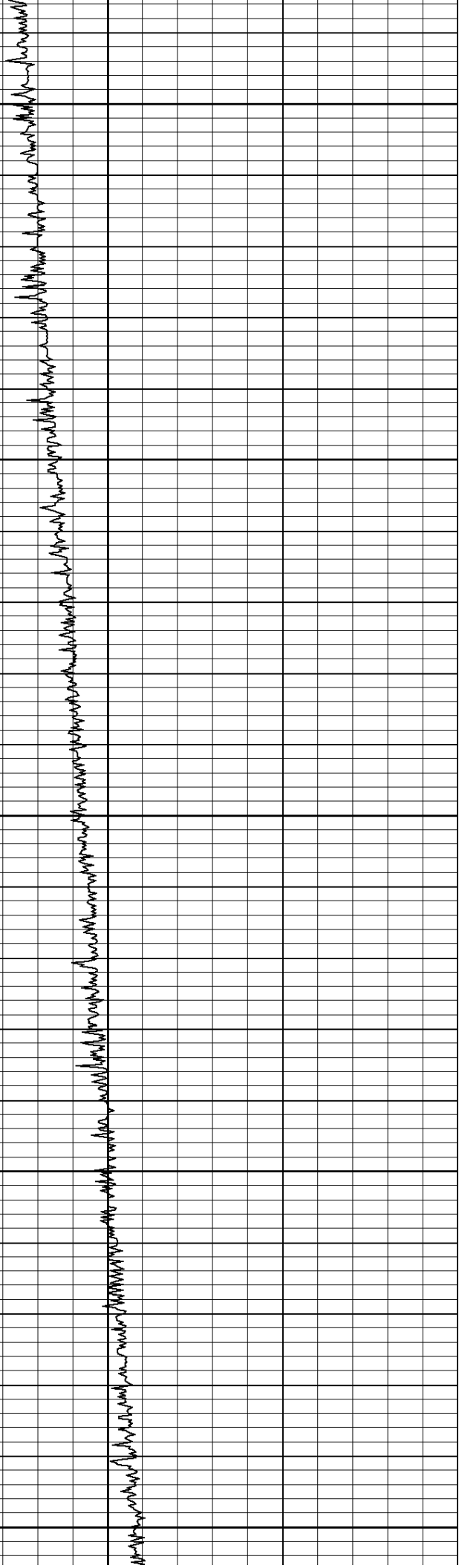
1250

69.5771

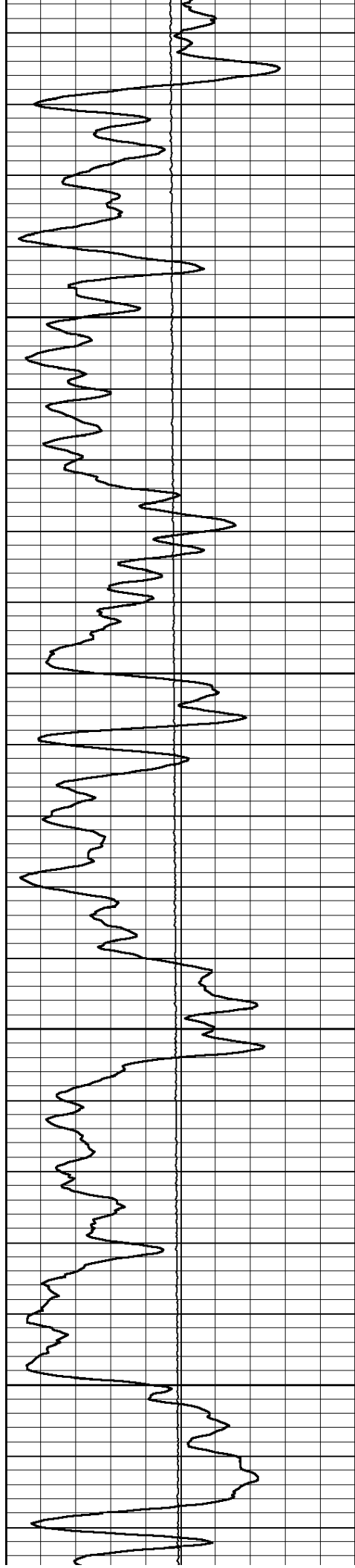
70.288

1300

70.6476







1350

1400

1450

1500

71.3744

71.6534

71.9999

72.5075

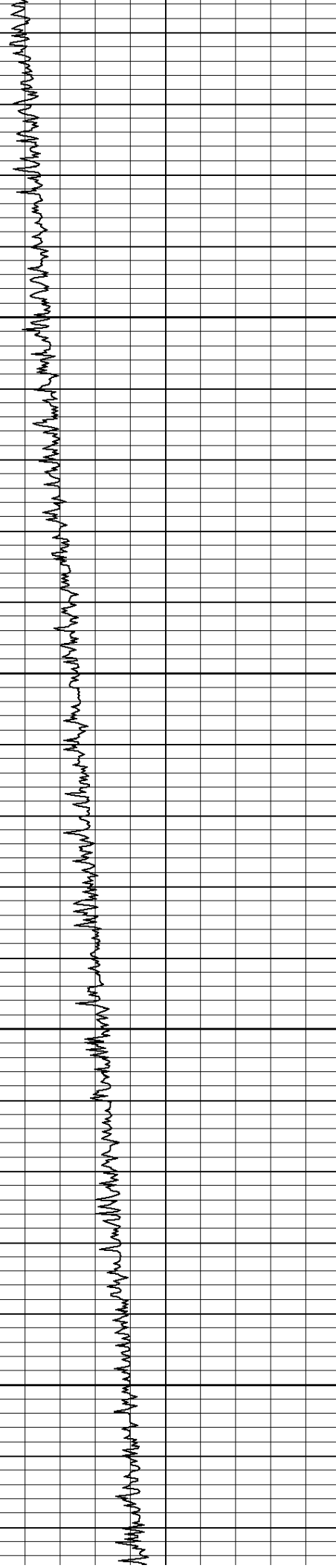
72.571

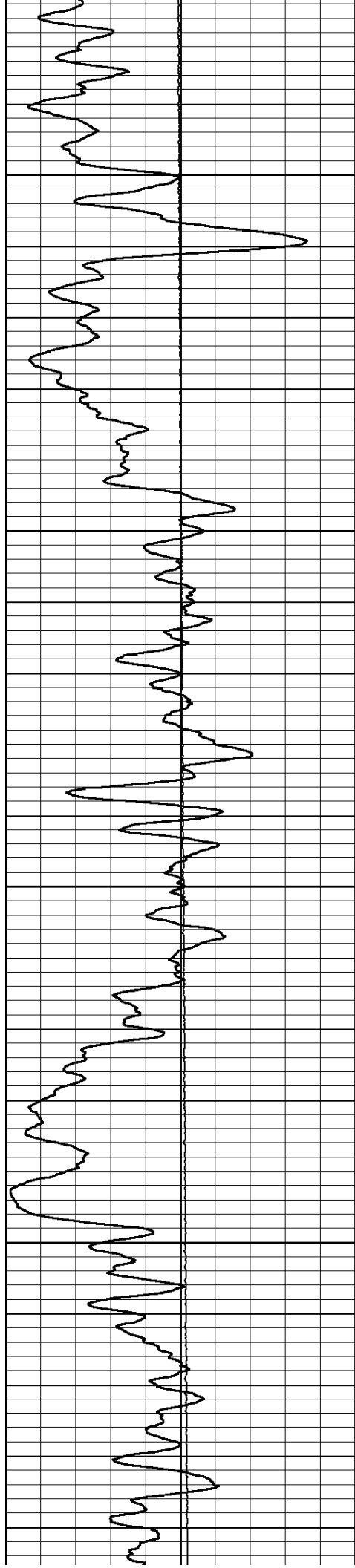
73.2577

73.0992

73.9999

74.2249





1550

74.6096

74.8877

1600

75.4363

75.9998

1650

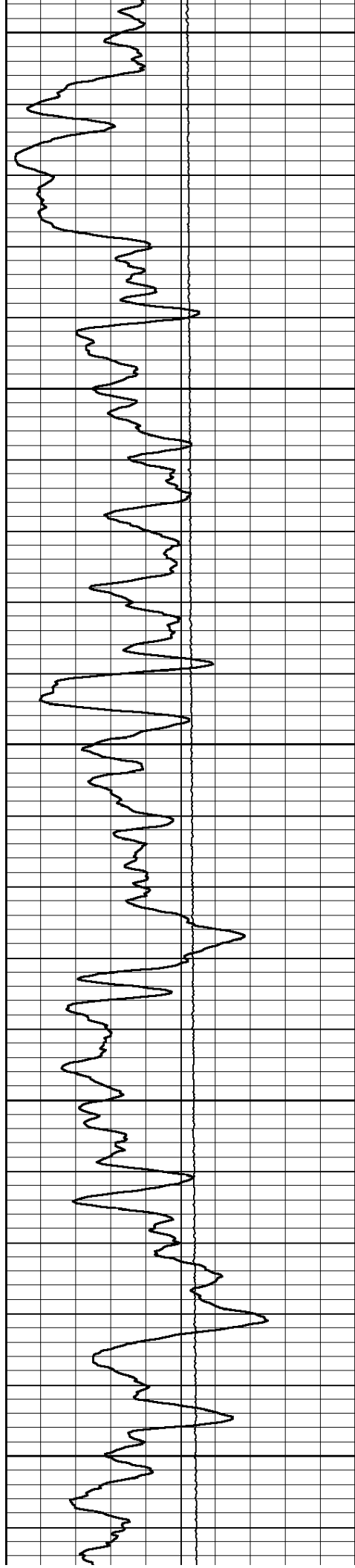
76.5371

76.9999

1700

77.1392

77.9695



1750

1800

1850

1900

1950

78.004

78.7727

79.3525

79.4627

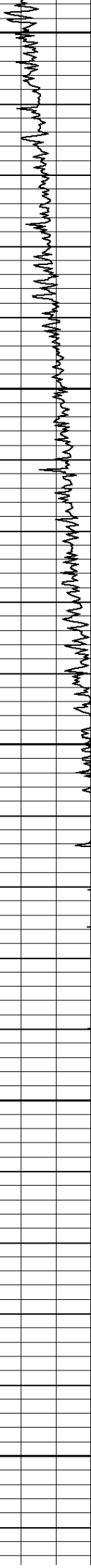
79.8034

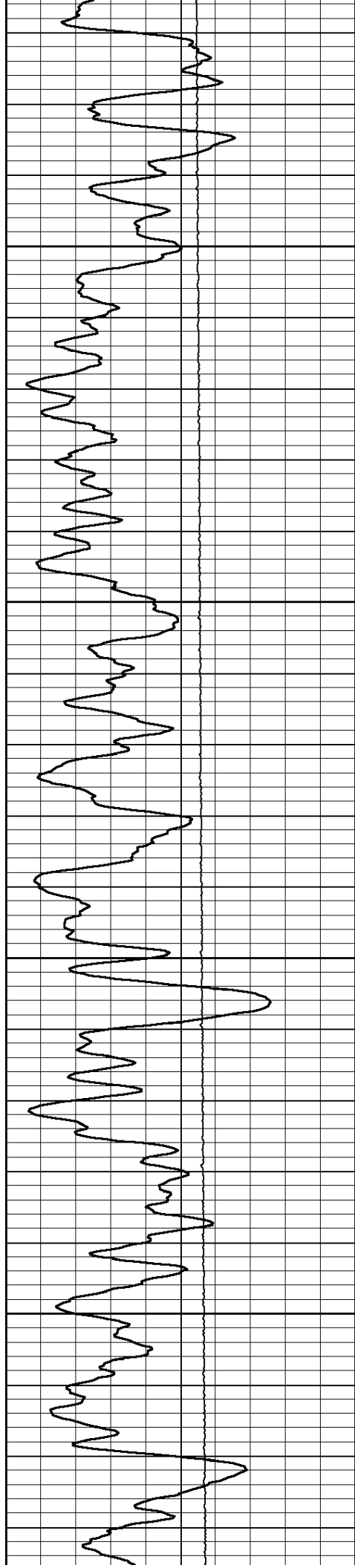
80.5638

80.6514

80.9023

81.8479



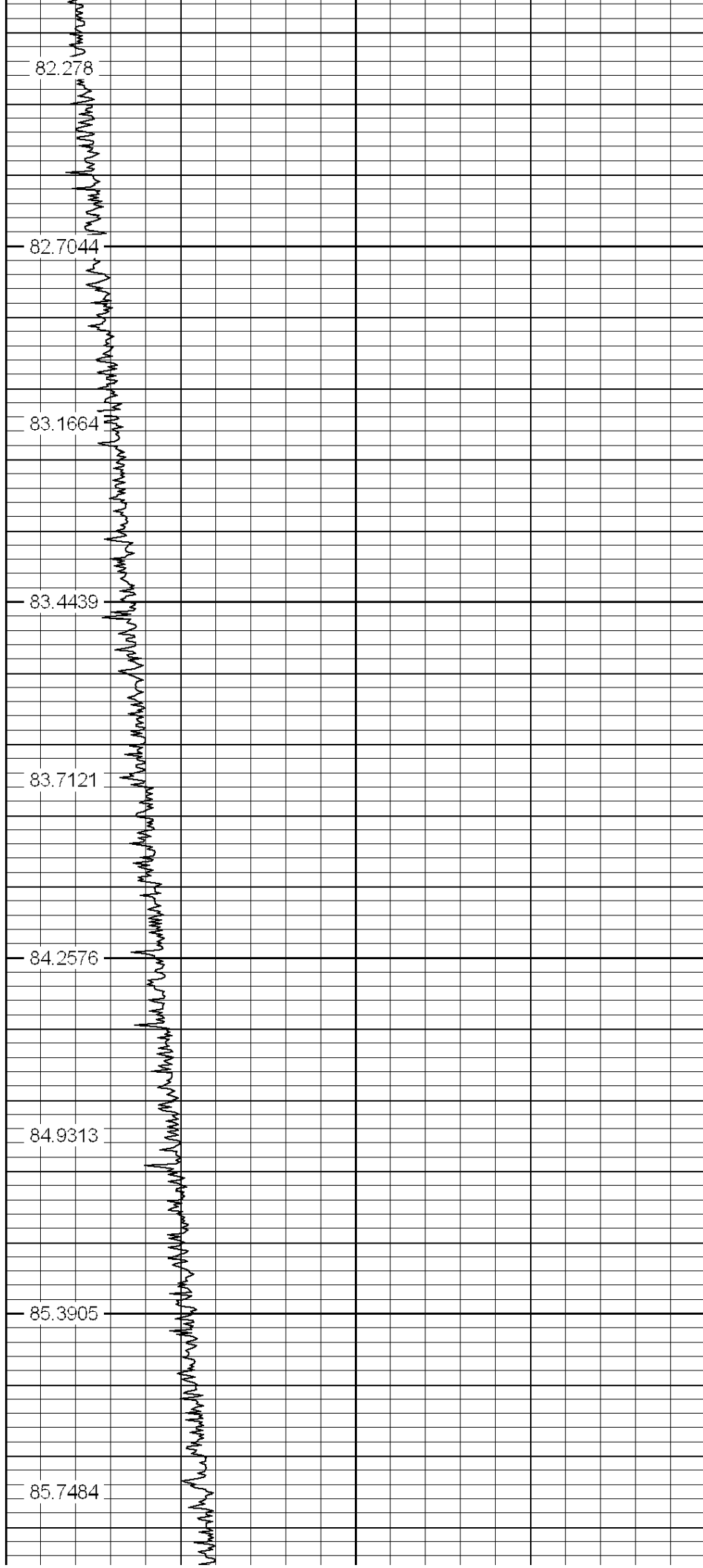


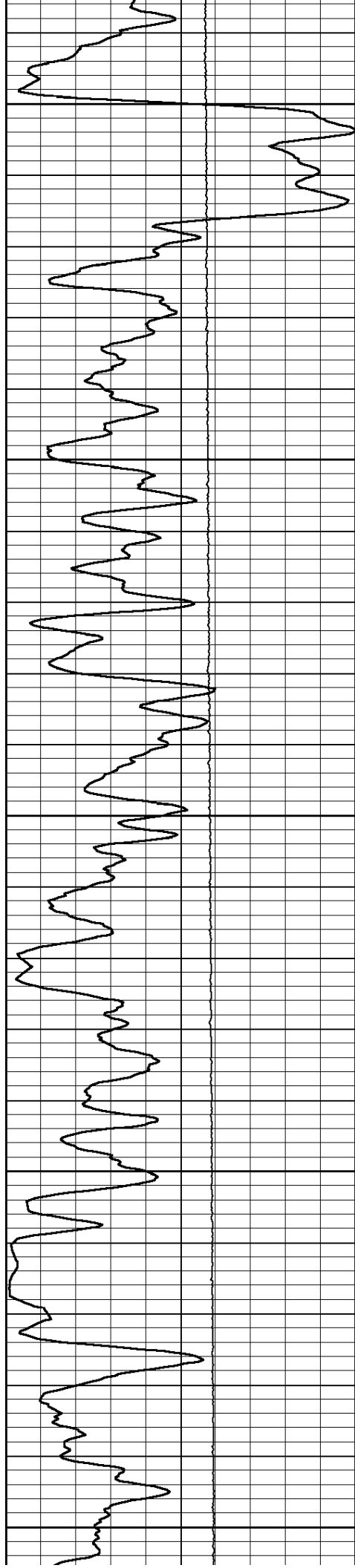
2000

2050

2100

2150





2200

86.0533

86.5561

2250

87.082

87.1294

2300

87.3568

88.2781

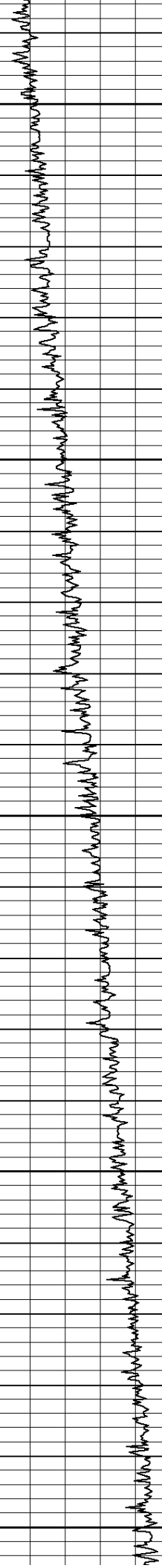
2350

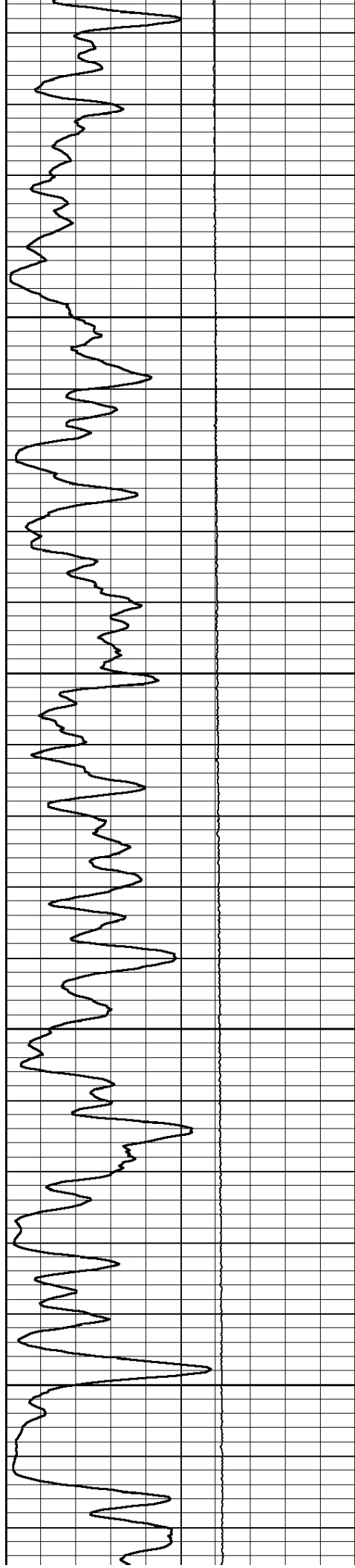
88.7119

89.0531

2400

89.2576





2450

2500

2550

2600

89.5534

90.2766

90.8152

90.8035

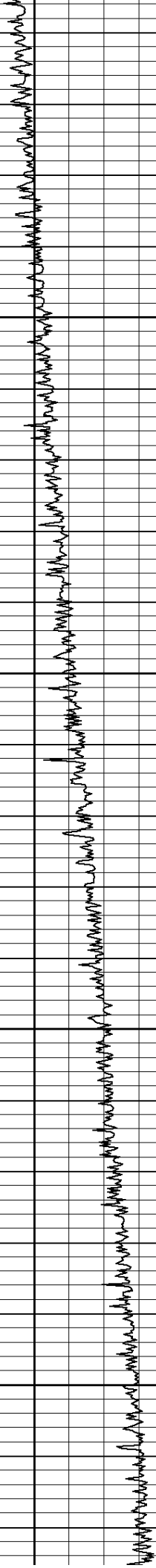
91.6685

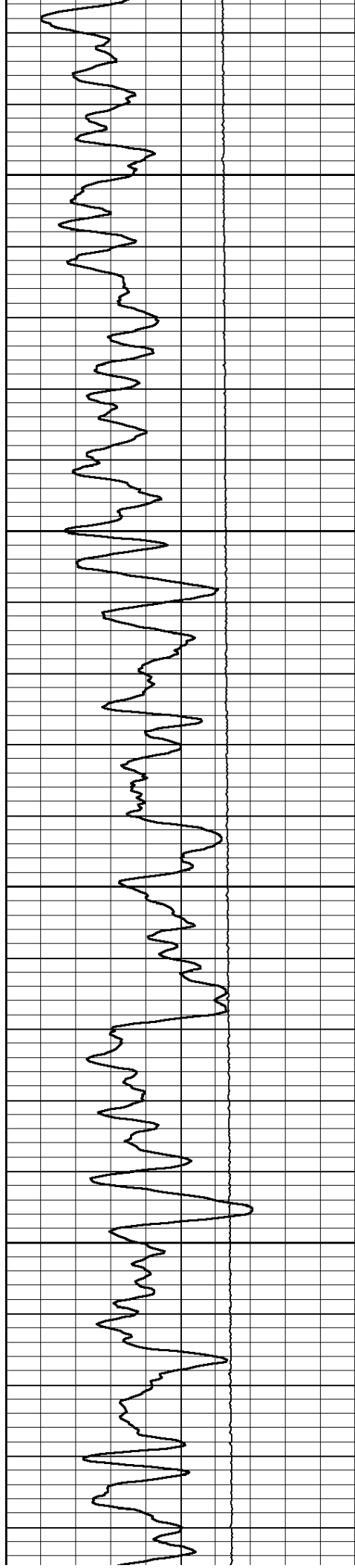
91.802

92.5029

92.8343

93.1049





2650

2700

2750

2800

93.6952

94.2233

94.5457

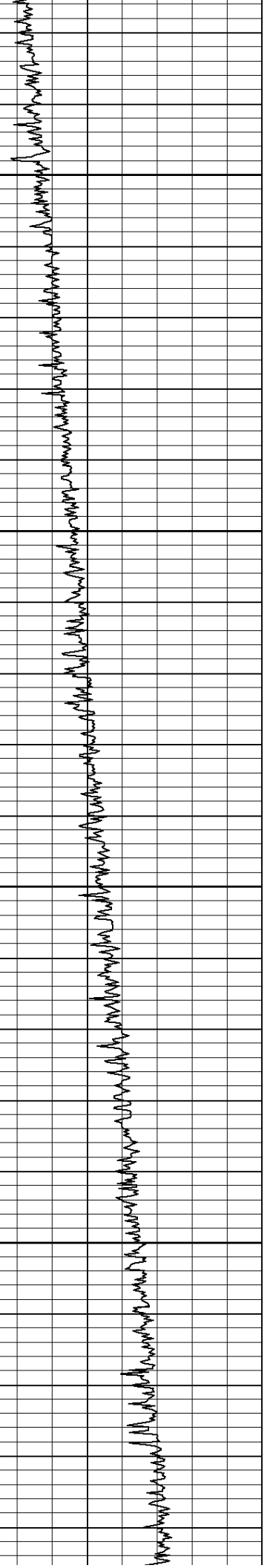
94.6097

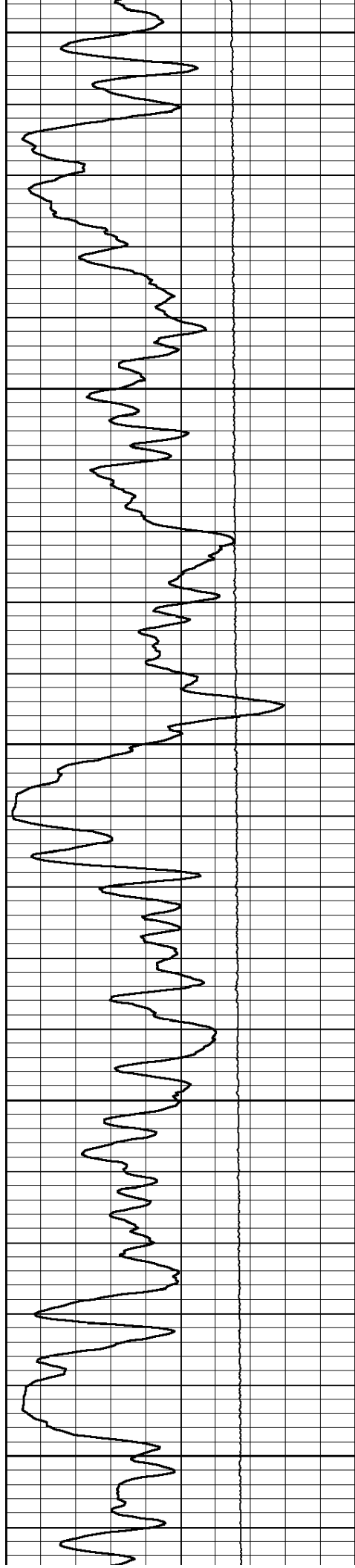
95.2957

96.1714

96.3375

96.9467





2850

2900

2950

3000

3050

97.5772

97.7158

98.0533

98.6094

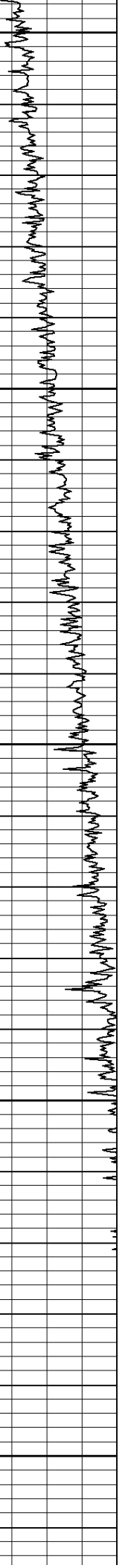
99.1124

99.7233

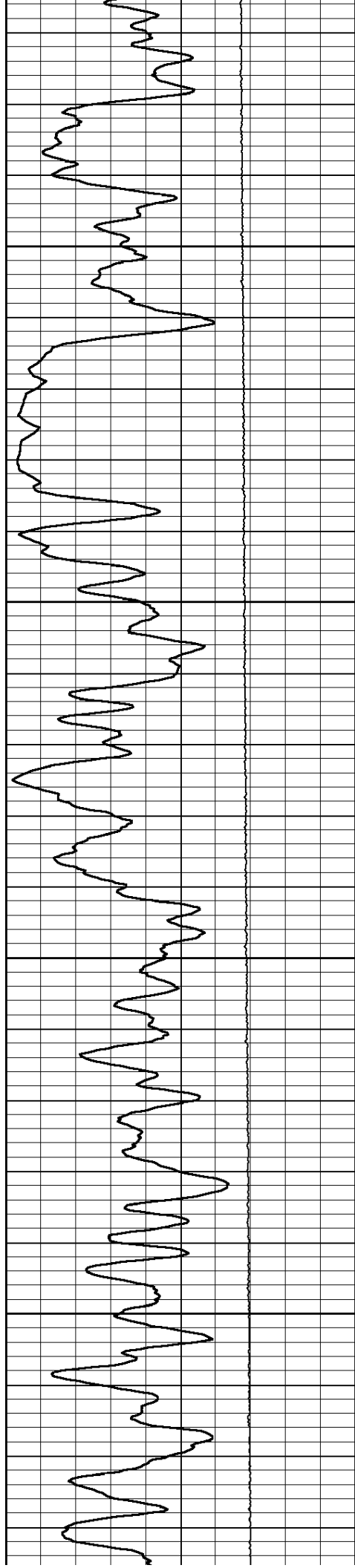
100.061

100.556

100.465







3100

3150

3200

3250

101.436

101.524

102.08

102.576

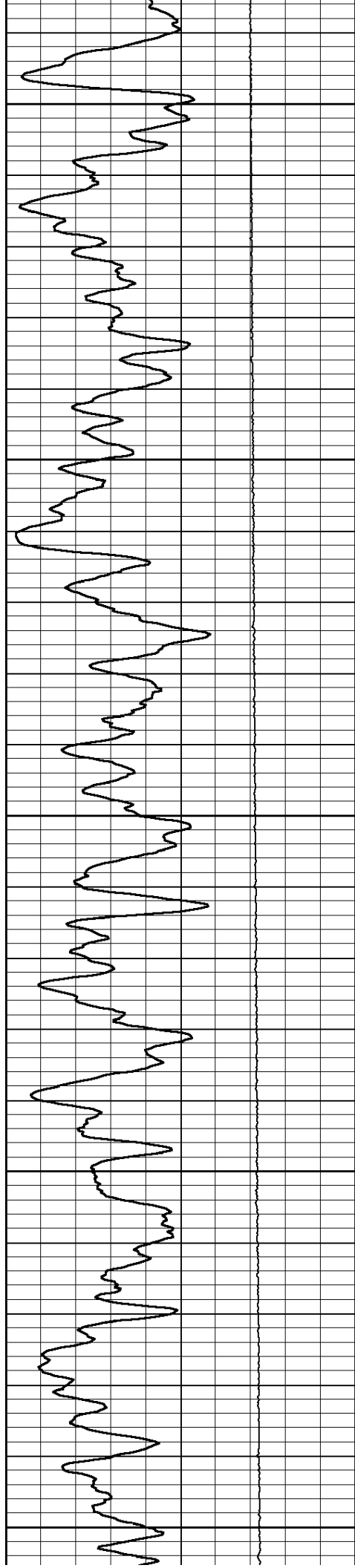
103.046

103.519

104.057

104.704

105.238



3300

3350

3400

3450

3500

105.215

105.58

106.43

106.739

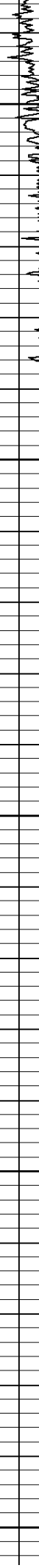
107.277

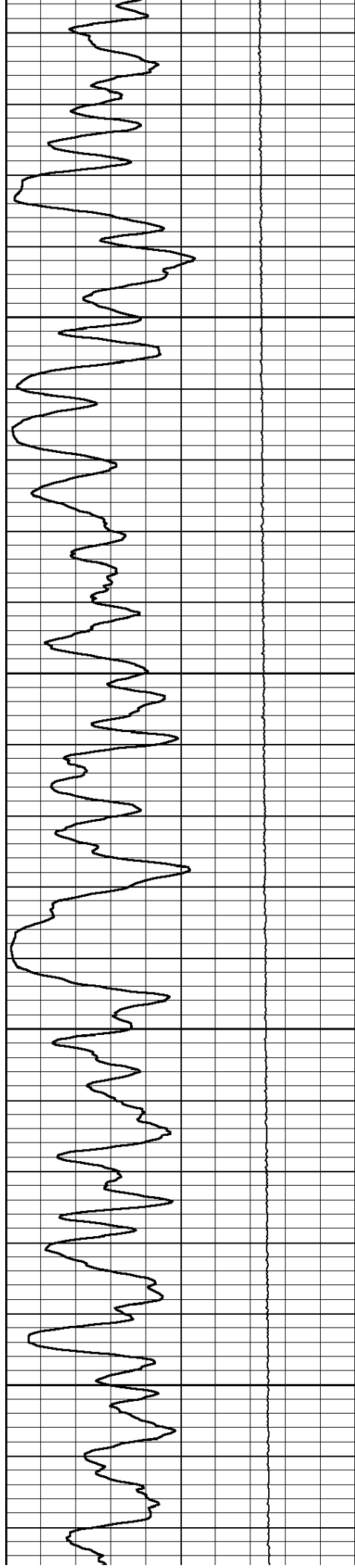
107.973

108.197

108.761

109.185



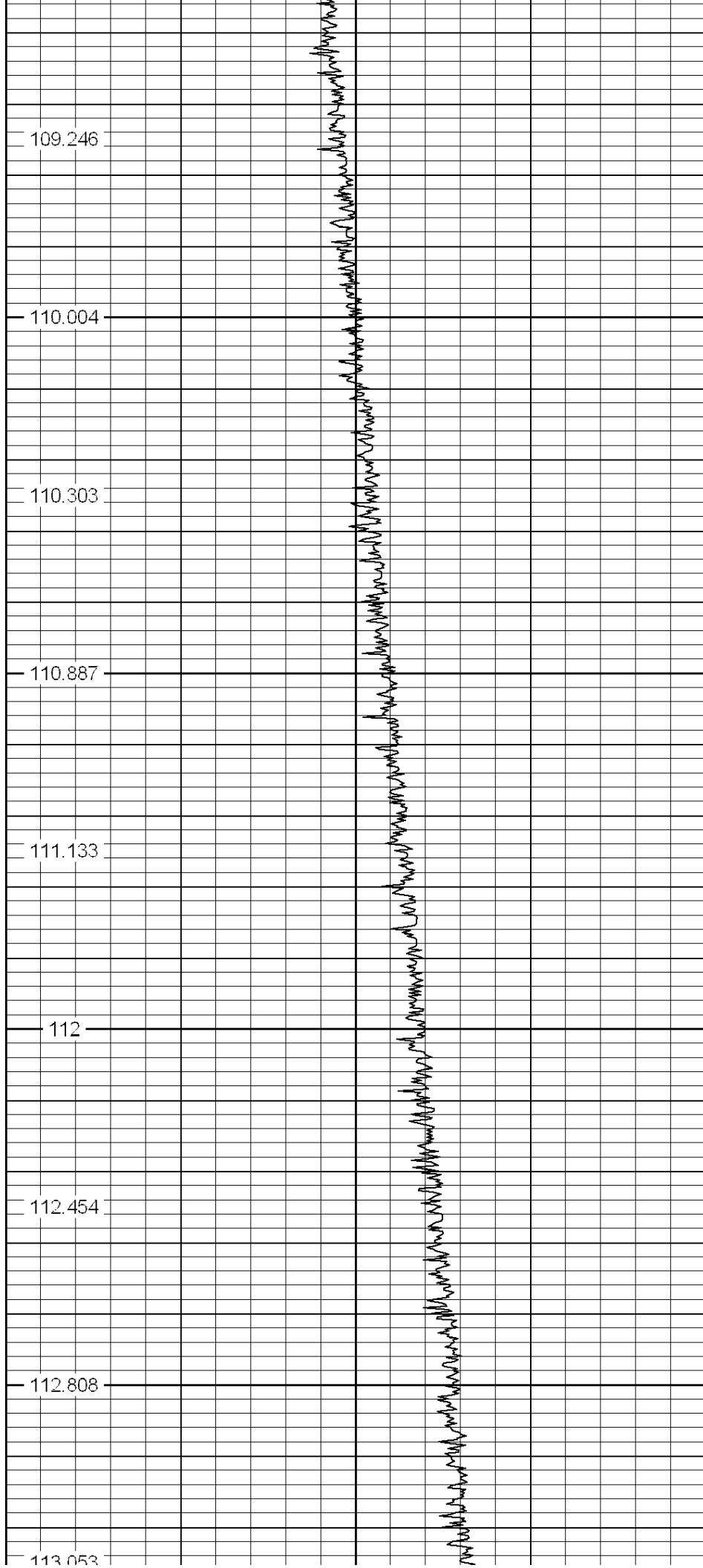


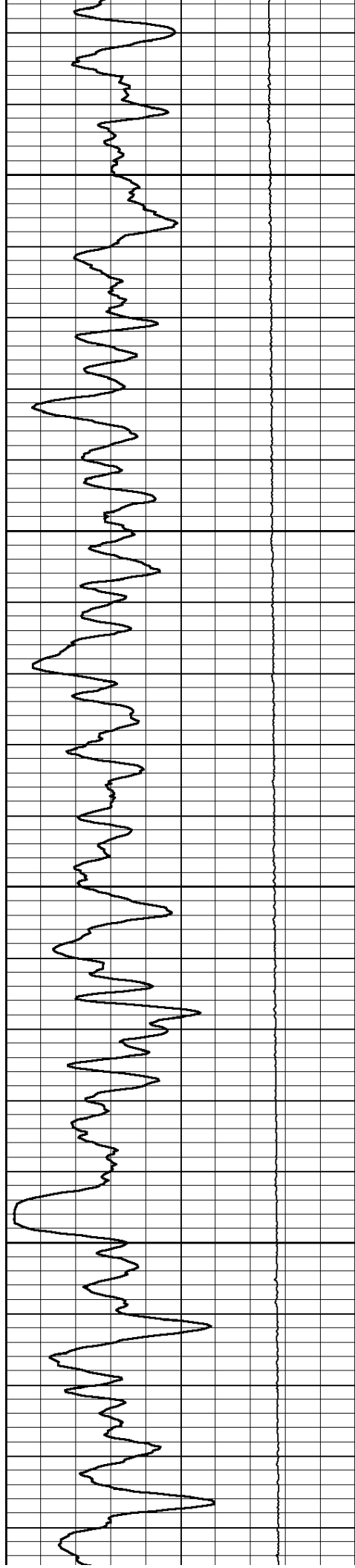
3550

3600

3650

3700





3750

113.722

114.223

3800

114.556

115.197

3850

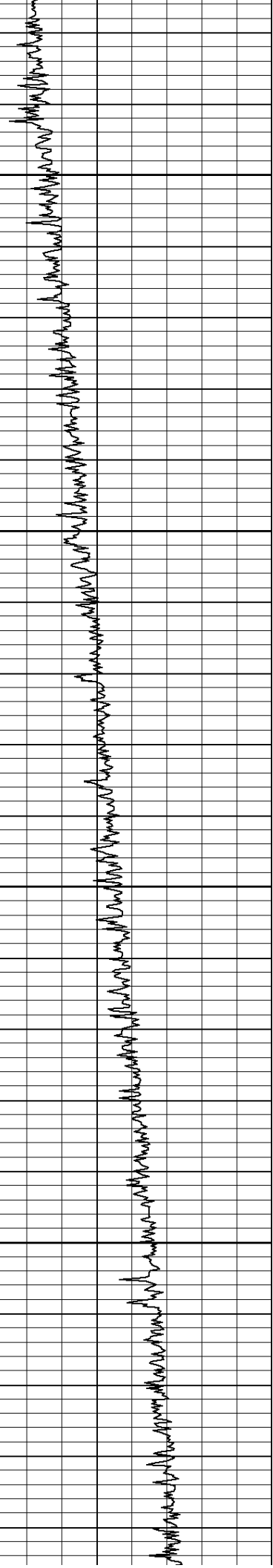
115.489

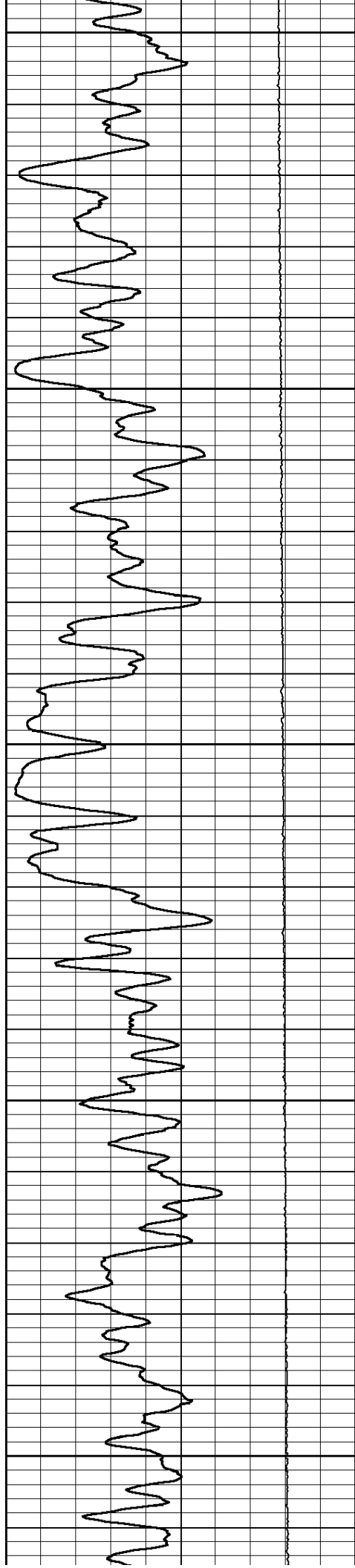
116.17

3900

116.171

116.981





3950

4000

4050

4100

4150

117.292

117.074

118.284

118.724

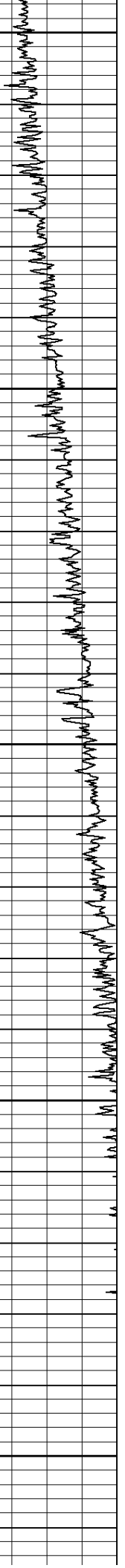
119.031

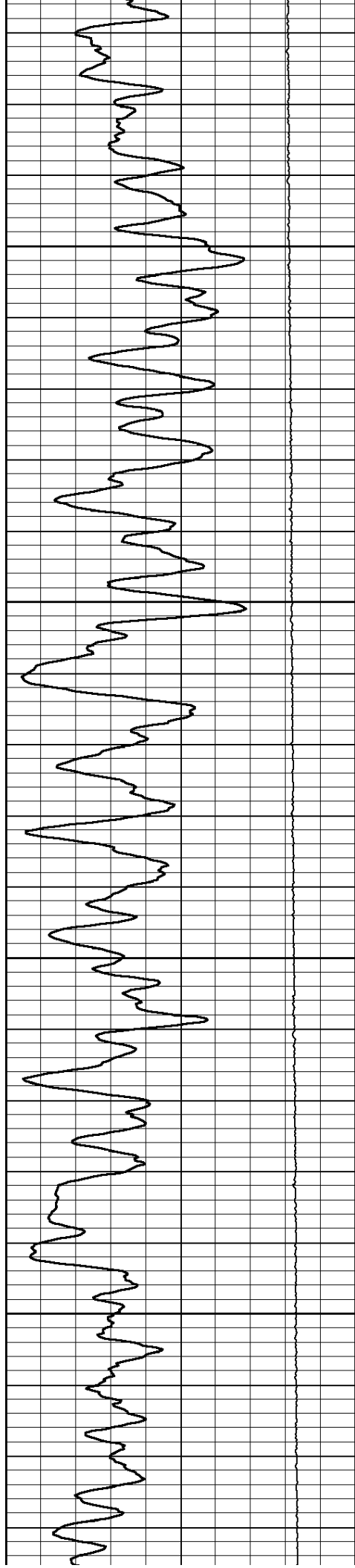
119.75

120

120.331

120.75





4200

4250

4300

4350

121.617

121.775

122.697

123.027

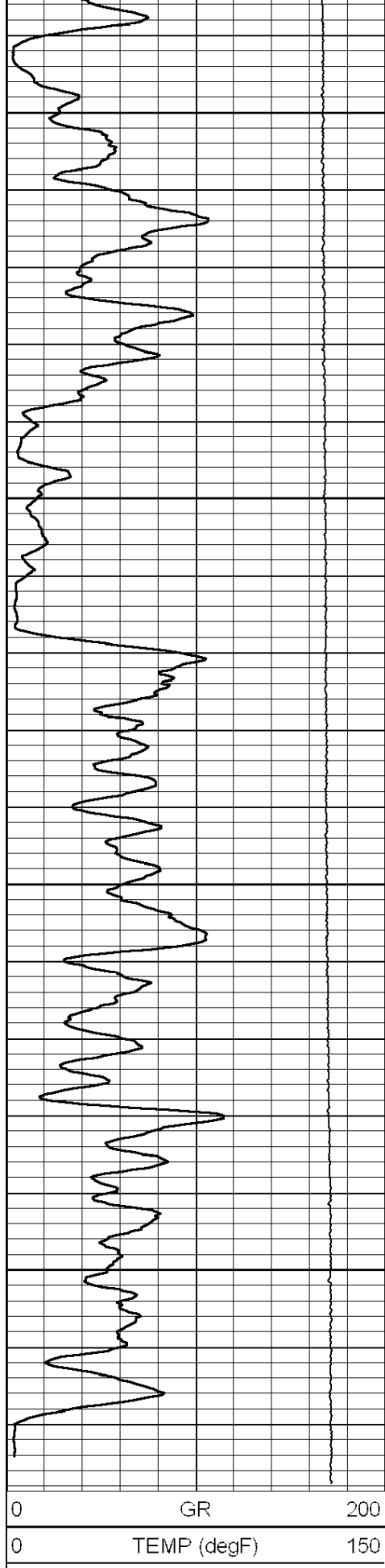
123.258

124.113

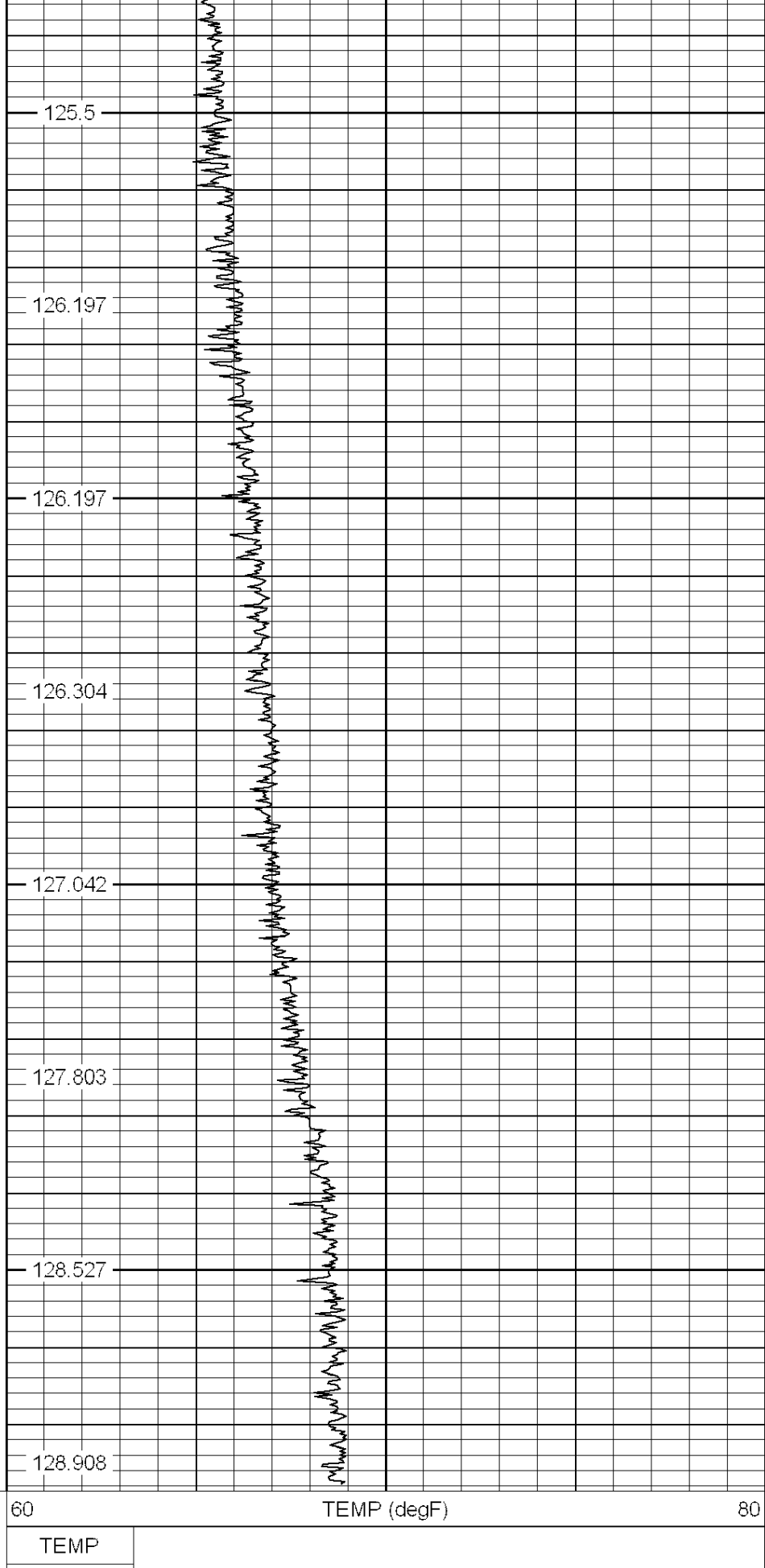
124.303

124.411

125



4400  
4450  
4500  
4550



TEMP (degF)