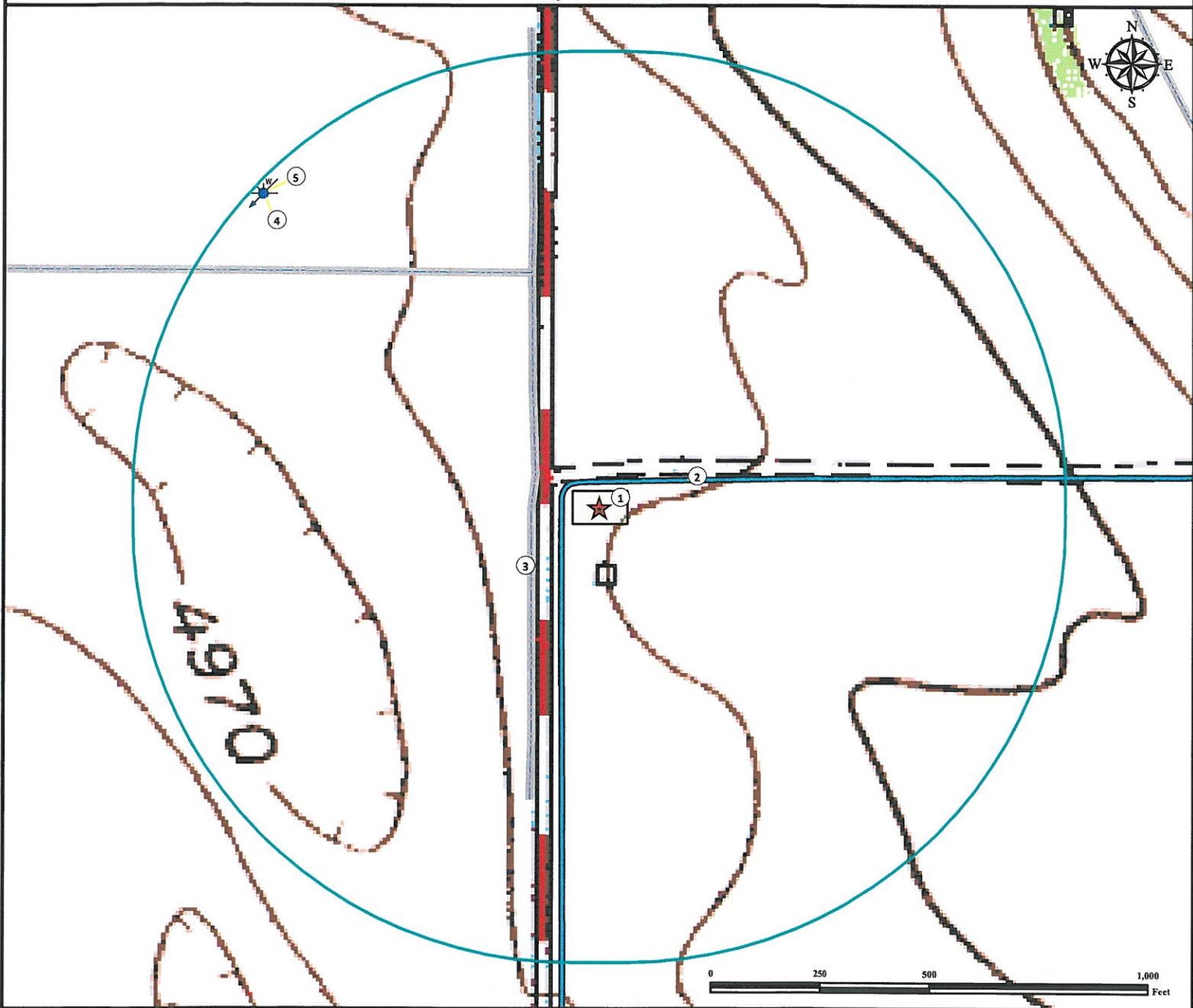


Hydrology Map

HIRSCH 24-G FACILITY

SW¼ NW¼ SECTION 24, TOWNSHIP 7 NORTH, RANGE 67 WEST OF THE 6TH PRINCIPAL MERIDIAN



- | | |
|-----------------------------------|---|
| 1. Proposed HIRSCH 24-G Facility. | 4. Water Well (permit #25954) is ±1046' NW. |
| 2. Ditch is ±59' N. | 5. Water Well (permit #14218) is ±1046' NW. |
| 3. Concrete Ditch is ±152' NW | |

Legend

- | | | |
|-------------------|---------------------|------------------|
| ★ Reference Point | □ 1000' Radius | — Concrete Ditch |
| ⊙ Water Well | □ Proposed Facility | — Ditch |

Reference Location

** All measurements are made from
★ Reference Point **

Lat: 40.563055° Long: -104.850429° (NAD83)
Elevation: 4997 Feet



Use our resources to find yours!
www.petro-fs.com
(303) 928-7128

Field Date: 05/23/2013
Drafting Date: 06/10/2013
Drafter: JLF
Revision:

Data Sources:

- TOPO courtesy USGS
- Water Wells courtesy CDWR

Prepared for:

BAYSWATER
EXPLORATION AND PRODUCTION, LLC