



7136 South Yale Avenue, Suite 414

Tulsa, Oklahoma 74136-6378

phone 918.925.9739

fax 866.534.4559

WWW.HZMUD.COM

Customer Information

Operator: Mineral Resources, Inc
3109 35th Ave
B101
Greeley, Colorado 80634

Geologist: Jack Wiener
Halliburton

Mud Logging Details

Logger: Ryan Bleess & David Pace

Log Interval: 7220' to 11531'

Start Date: May 9, 2012

Release Date: May 15, 2012

Well Information

Well Name: ISLAND GROVE 2-32 HZ

Location: 32-6N-65W
1627' FSL, 272' FWL

County: Weld
State: Colorado

Drilling Rig: ENSIGN 14

Total Depth: 11531'

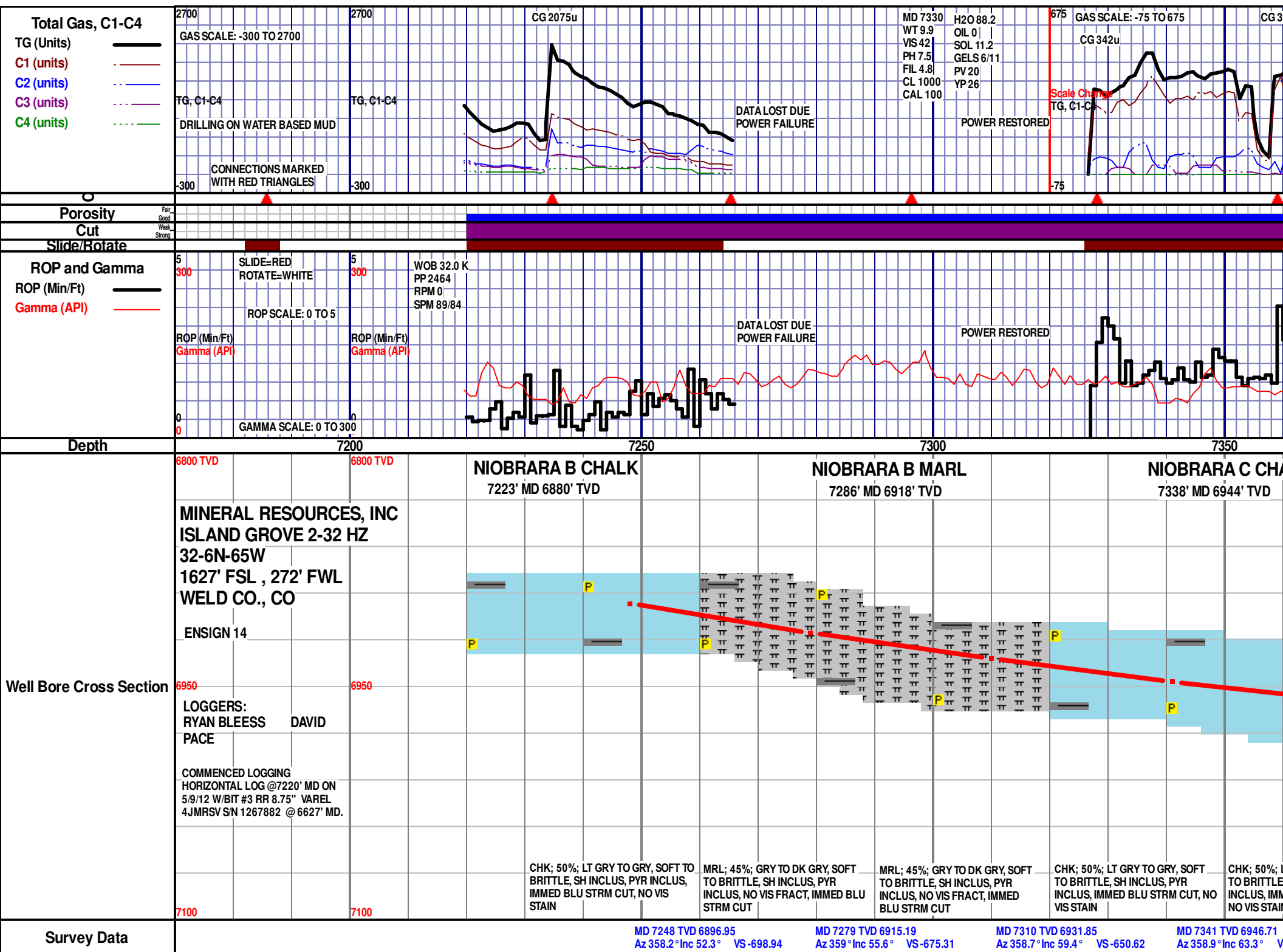
TD Date: May 15, 2012

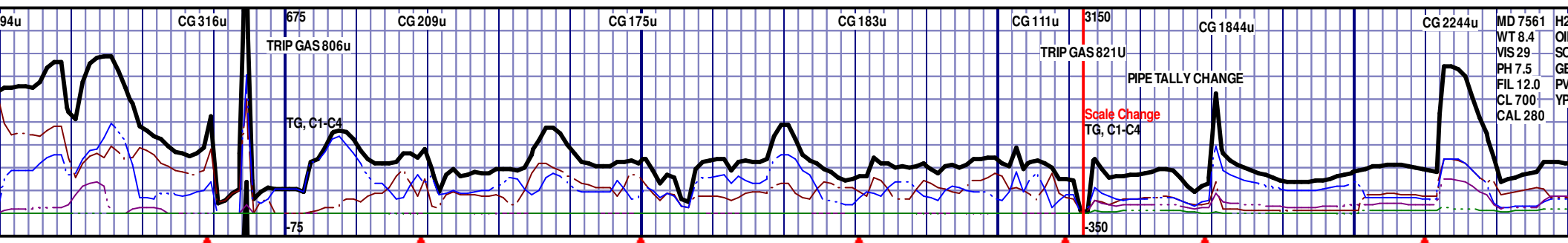
Formation: Niobrara

KB Elevation: 4662'

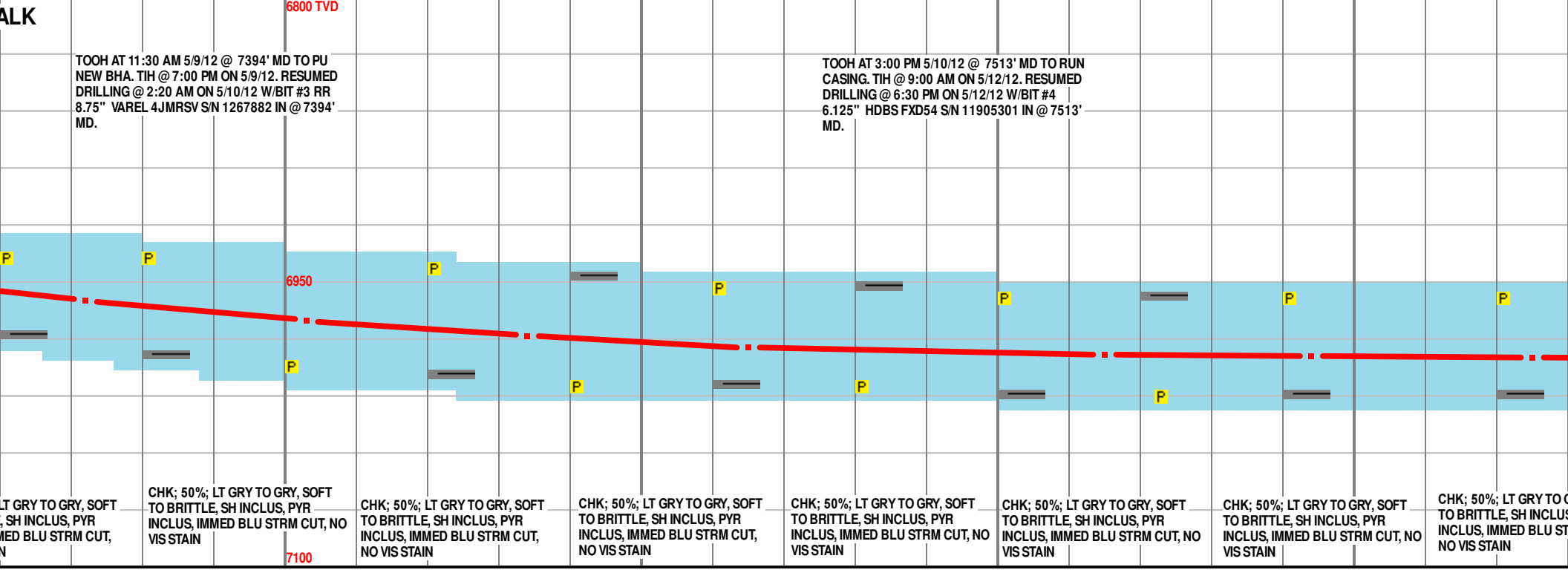
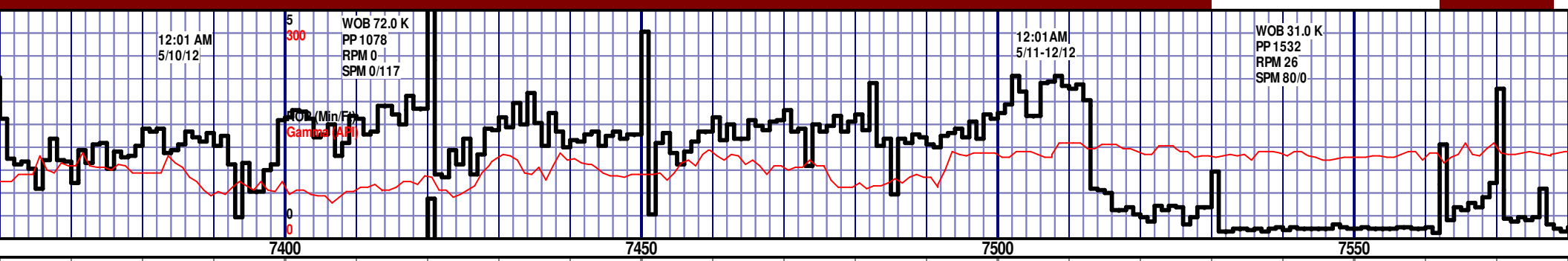
GR Elevation: 4647'

API Number: 05-123-35463

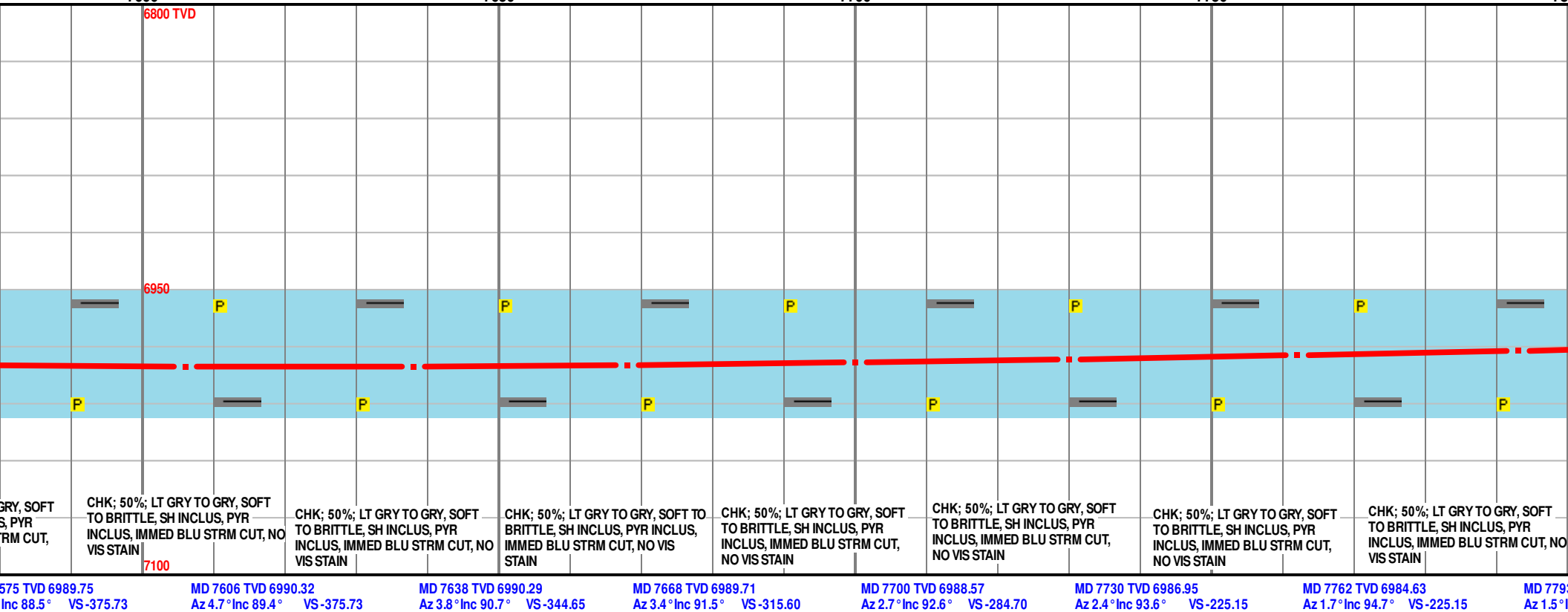
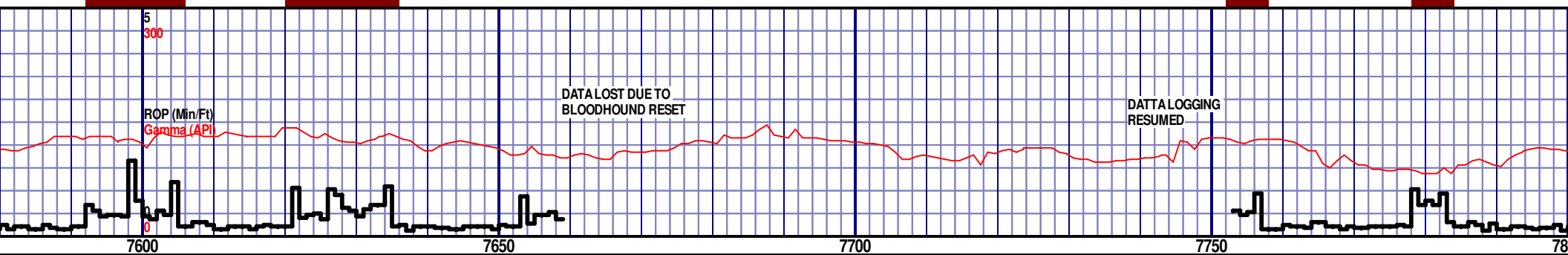
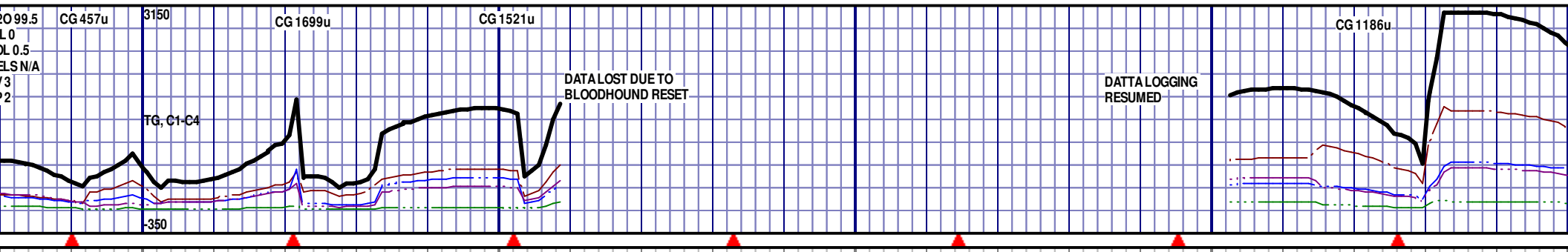


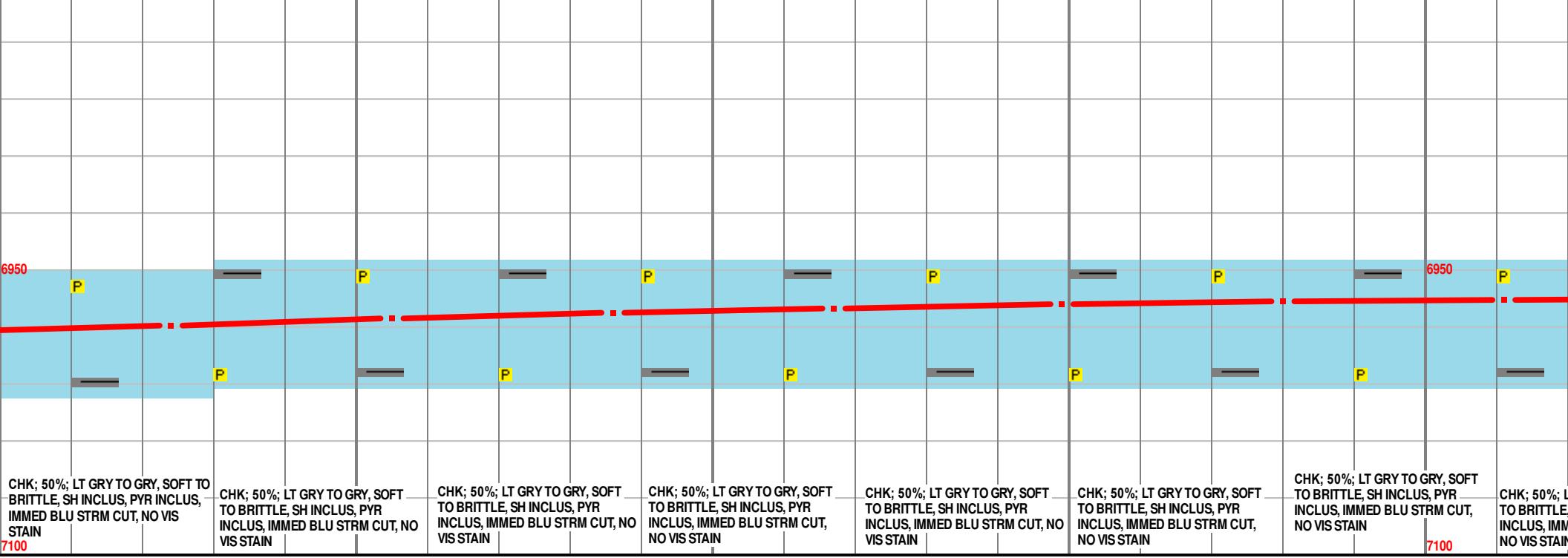
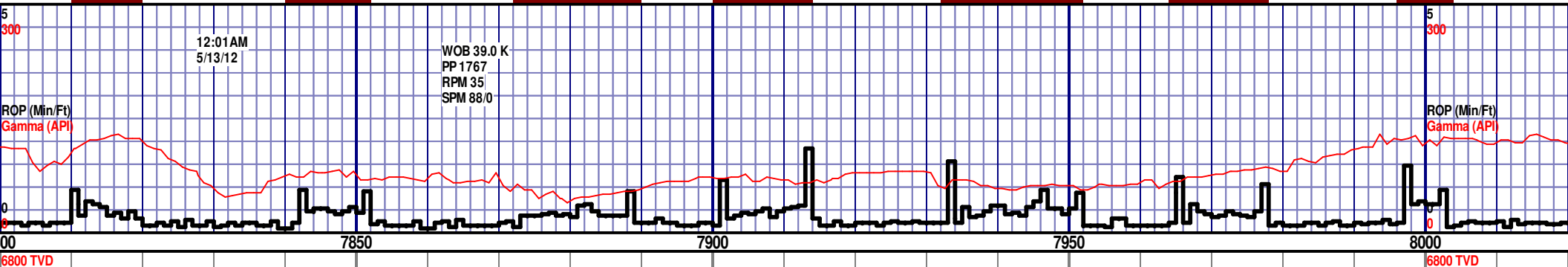
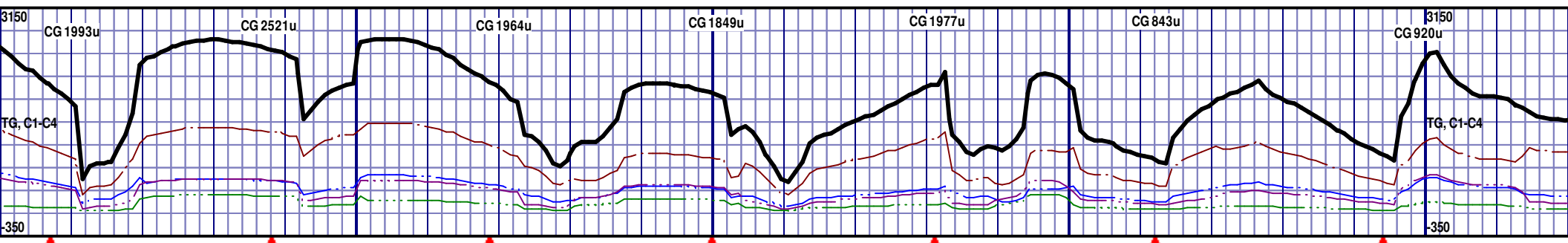


MD 7561
WT 8.4
VIS 29
PH 7.5
FIL 12.0
CL 700
CAL 280

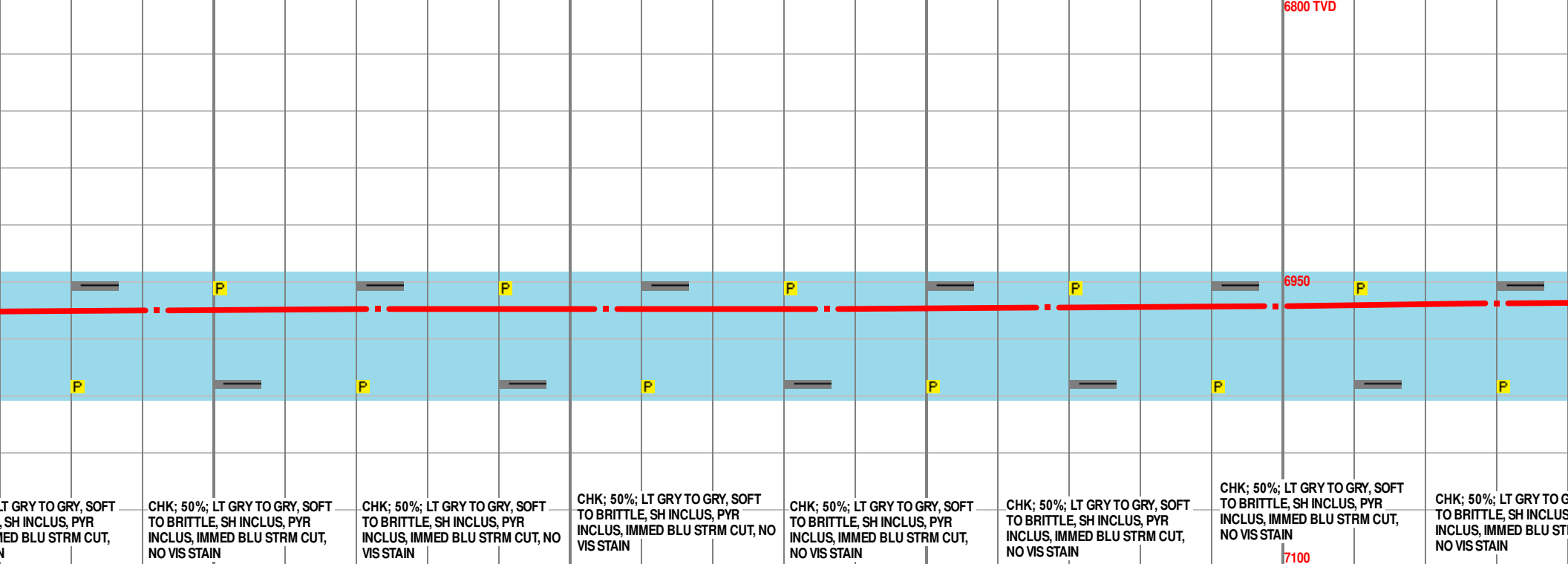
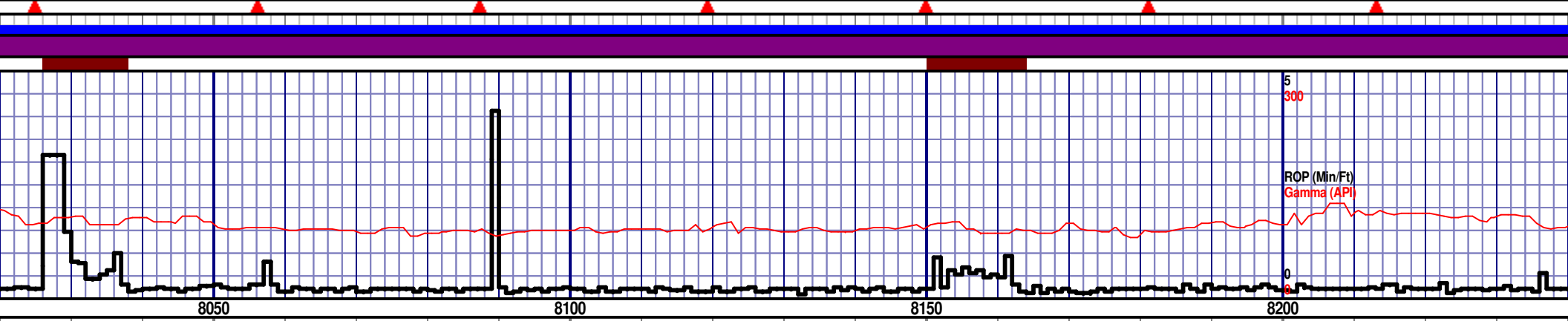
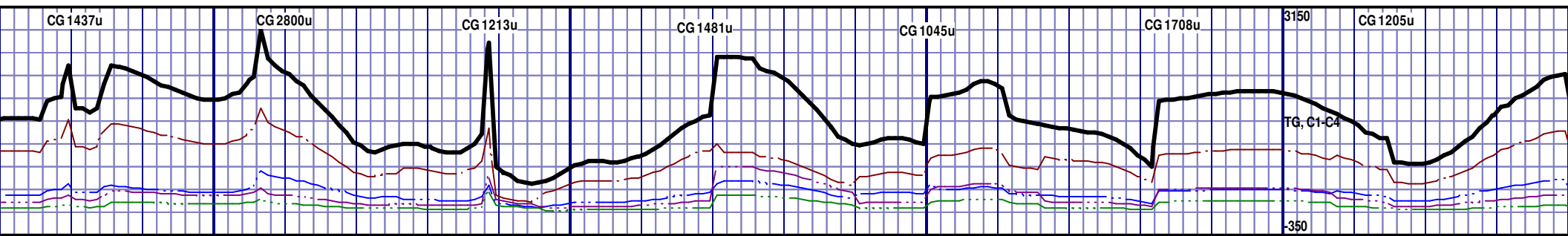


MD 7372 TVD 6959.58 Az 359.2° Inc 67.6° VS -598.27 MD 7403 TVD 6970.13 Az 0.8° Inc 71.9° VS -570.62 MD 7434 TVD 6978.65 Az 1.9° Inc 76.9° VS -542.03 MD 7465 TVD 6984.35 Az 3.4° Inc 81.9° VS -512.65 MD 7515 TVD 6988.57 Az 4.7° Inc 88.4° VS -464.33 MD 7544 TVD 6989.15 Az 5° Inc 89.3° VS -436.10 MD 7561 TVD 6990.15 Az 5.1° Inc 89.3° VS -436.10

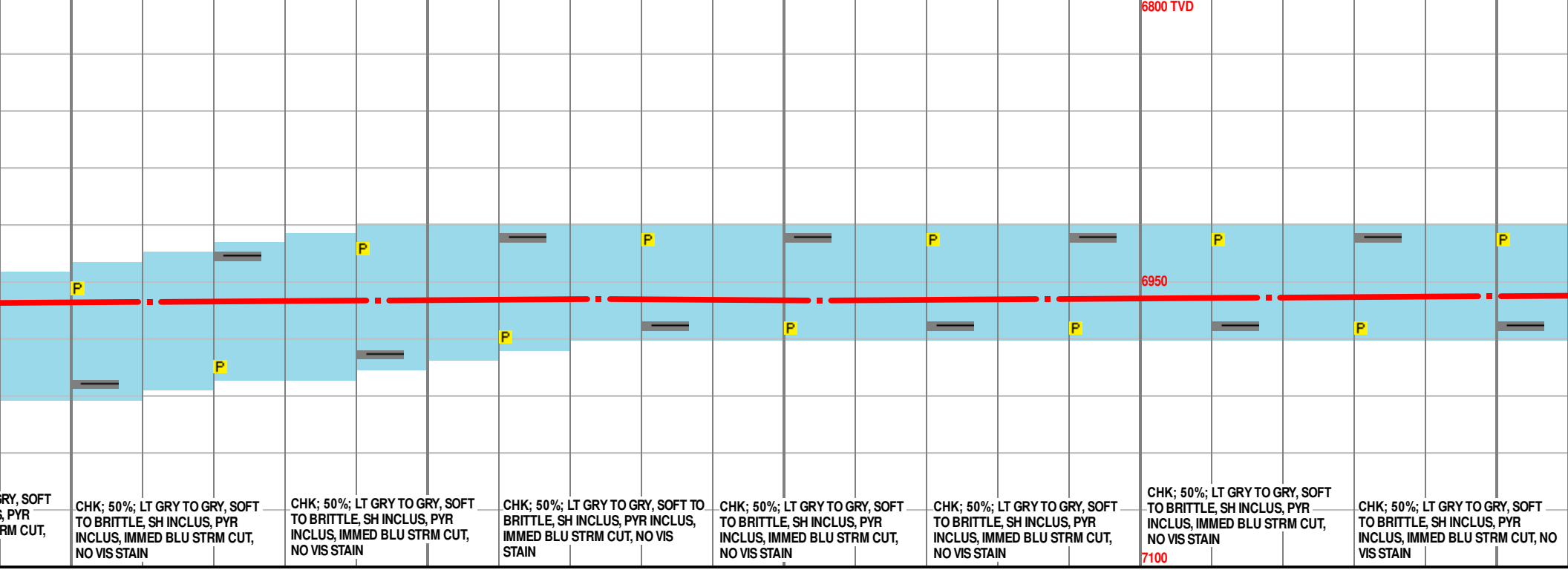
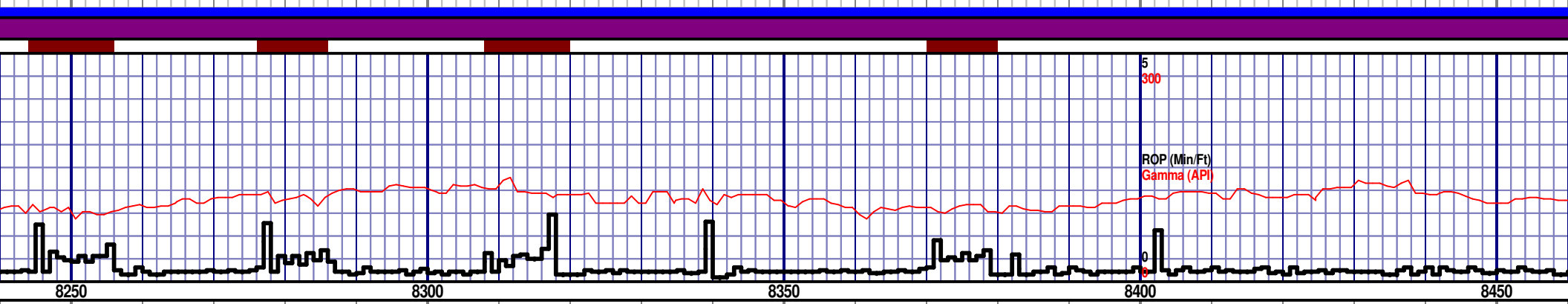
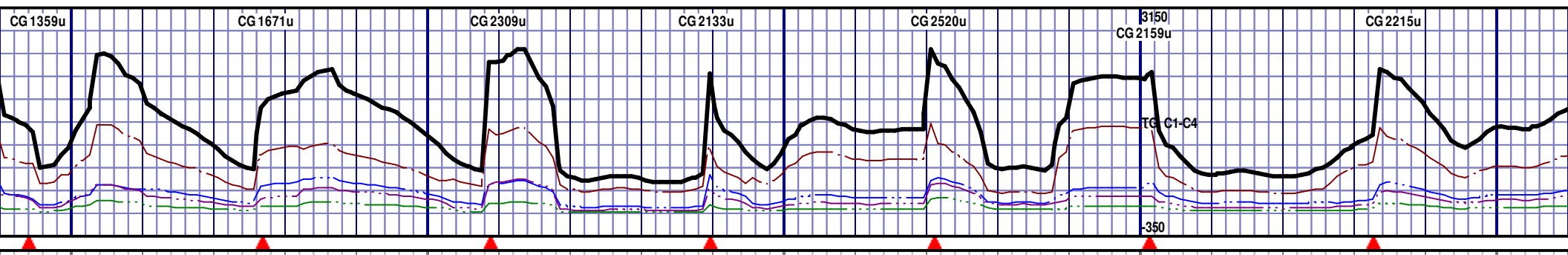




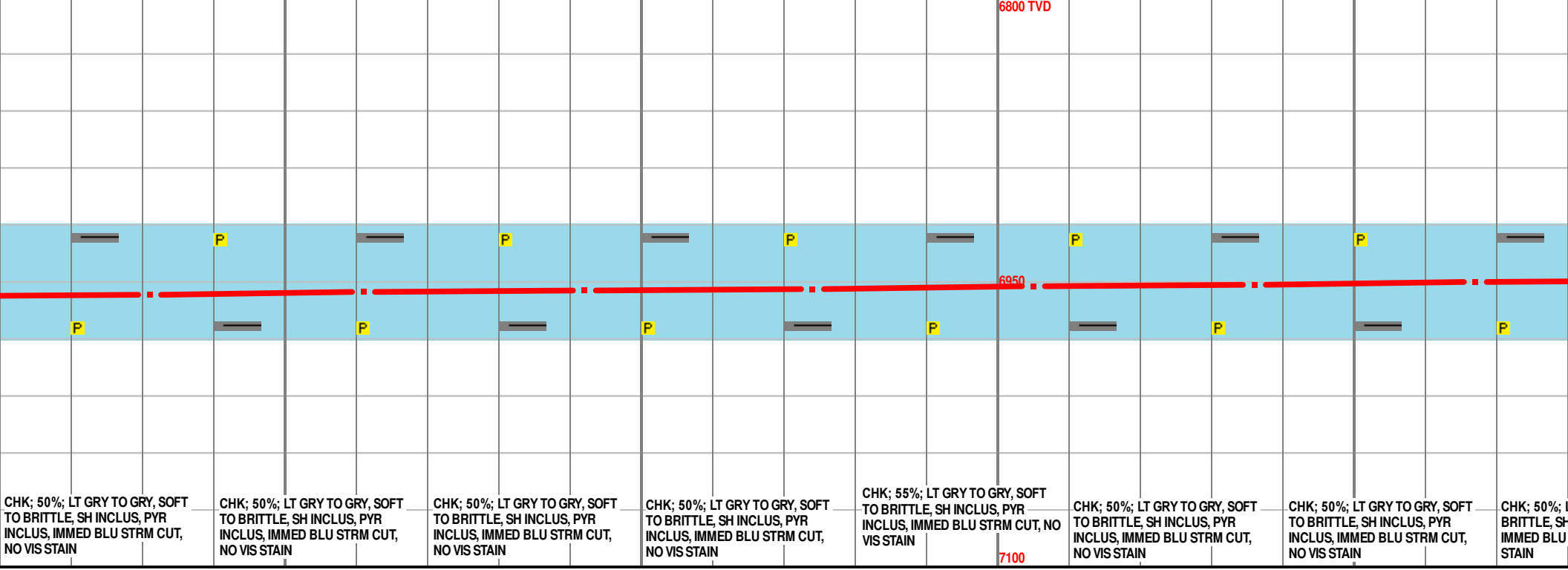
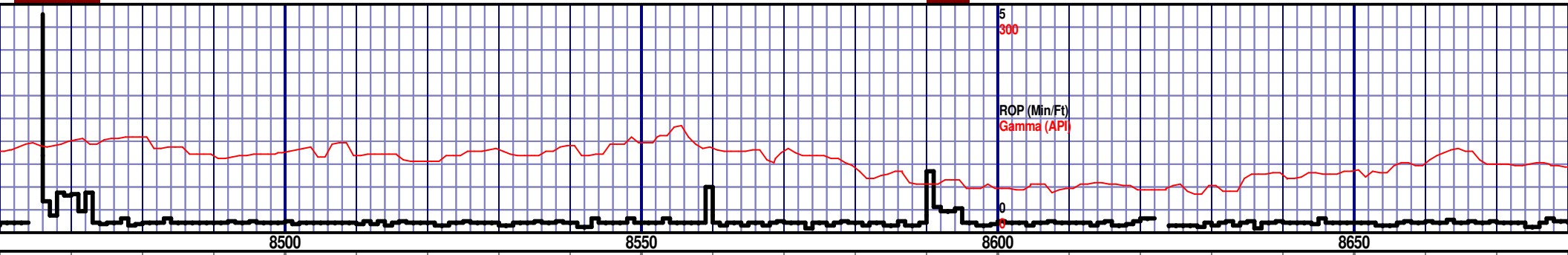
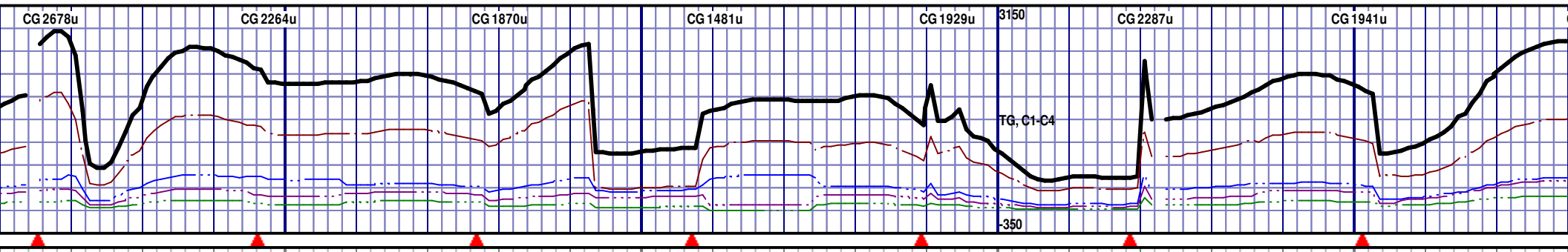
3 TVD 6981.9 Inc 95.4° VS-195.53	MD 7824 TVD 6978.88 Az 0.6° Inc 95.8° VS-166.02	MD 7855 TVD 6975.69 Az 359.6° Inc 96° VS-136.68	MD 7886 TVD 6972.56 Az 359° Inc 95.6° VS-107.47	MD 7917 TVD 6969.88 Az 358° Inc 94.3° VS-78.36	MD 7949 TVD 6967.87 Az 357.3° Inc 92.9° VS-48.48	MD 7980 TVD 6966.52 Az 356.4° Inc 92.1° VS-19.55	MD 8011 TVD 6965.27 Az 355.5° Inc 91.8° VS-10.62
-------------------------------------	--	--	--	---	---	---	---



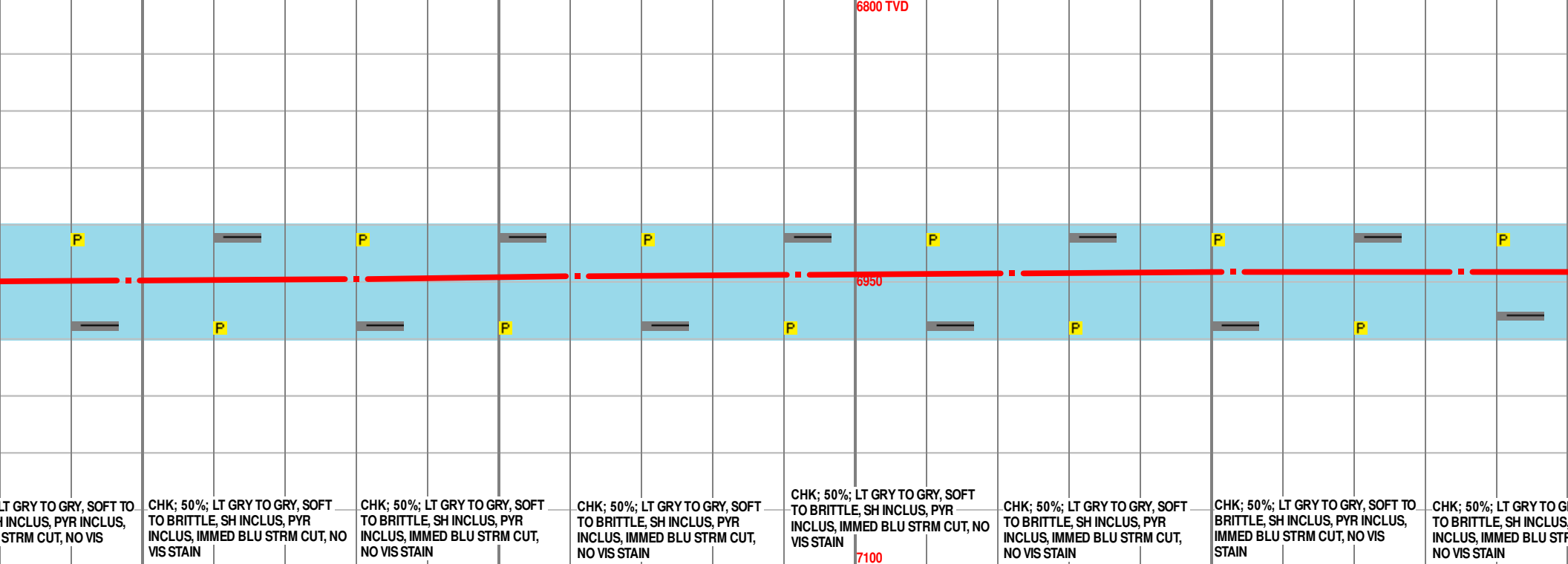
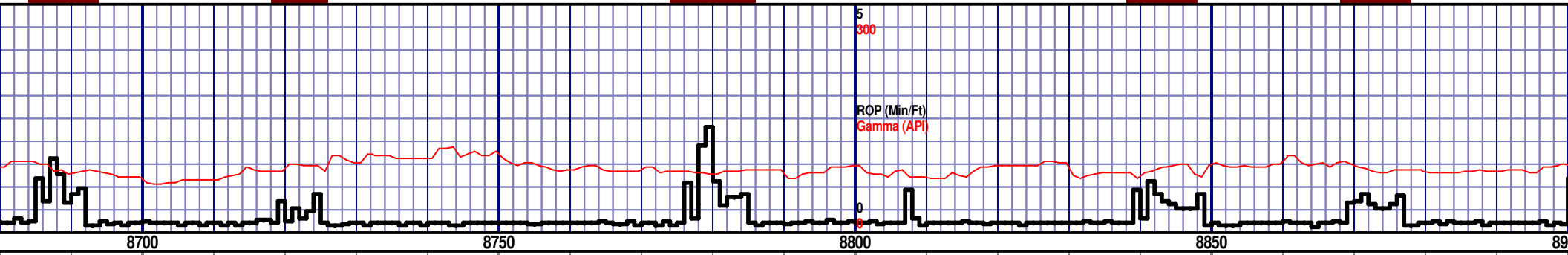
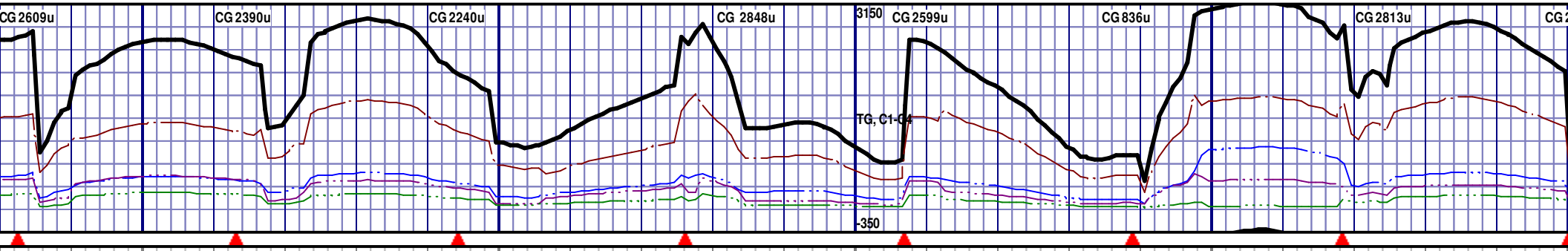
MD 6965.49 Inc 91.7° VS9.17	MD 8042 TVD 6964.84 Az 356.2° Inc 90.7° VS37.87	MD 8073 TVD 6964.44 Az 356.4° Inc 90.8° VS66.66	MD 8105 TVD 6964.21 Az 357.1° Inc 90° VS96.48	MD 8136 TVD 6964.13 Az 357.5° Inc 90.3° VS125.48	MD 8167 TVD 6963.7 Az 357.5° Inc 91.3° VS154.51	MD 8199 TVD 6962.78 Az 357.5° Inc 92° VS184.47	MD 8230 TVD 6962.78 Az 357.6° Inc 92° VS184.47
--------------------------------	--	--	--	---	--	---	---



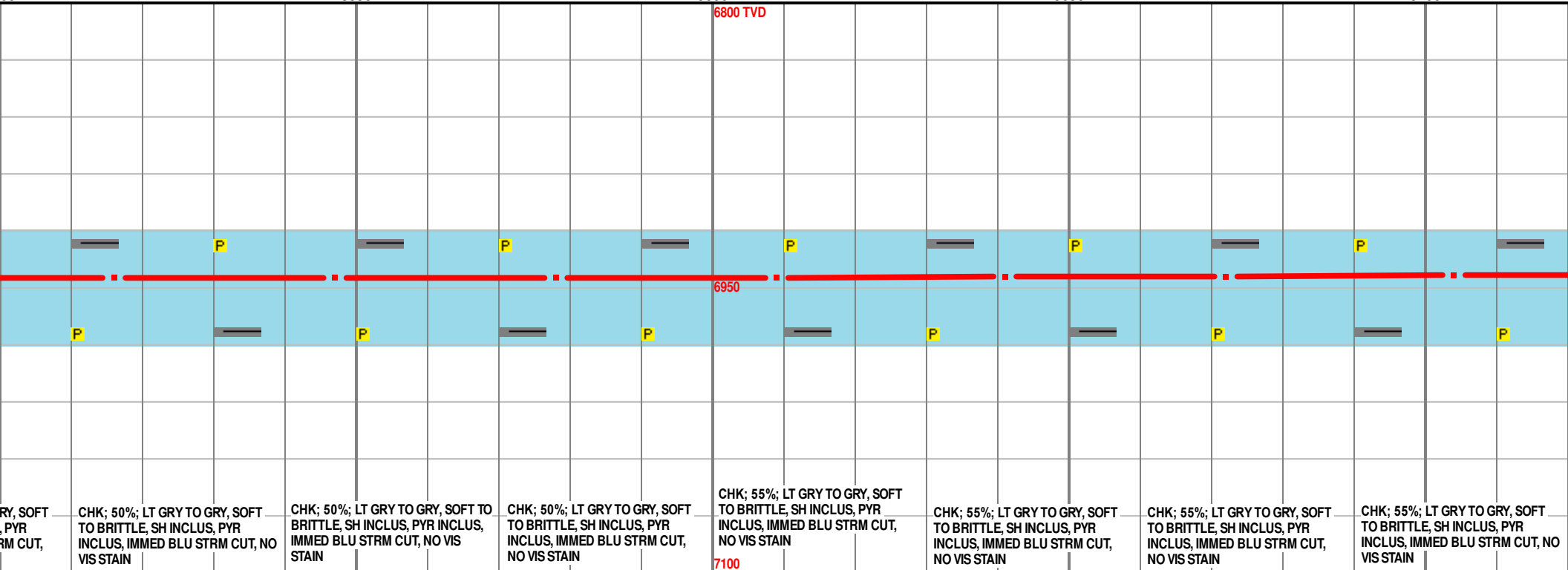
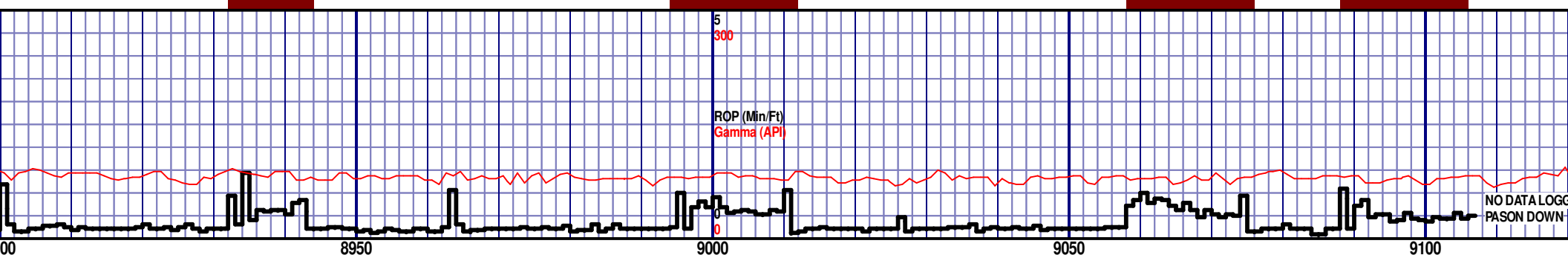
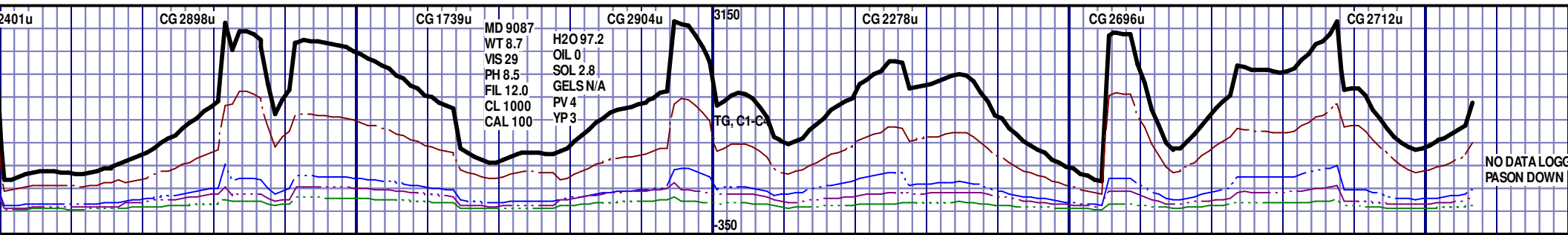
MD 6961.59 c 92.4° VS 213.49	MD 8261 TVD 6960.37 Az 357.1° Inc 92.1° VS 242.47	MD 8293 TVD 6959.45 Az 358° Inc 91.2° VS 272.43	MD 8324 TVD 6959.29 Az 358.3° Inc 89.4° VS 301.59	MD 8355 TVD 6959.53 Az 358.5° Inc 89.7° VS 330.79	MD 8387 TVD 6959.34 Az 358° Inc 91° VS 360.90	MD 8418 TVD 6958.61 Az 358.2° Inc 91.7° VS 390.04	MD 8449 TVD Az 358.2° Inc
---------------------------------	--	--	--	--	--	--	------------------------------



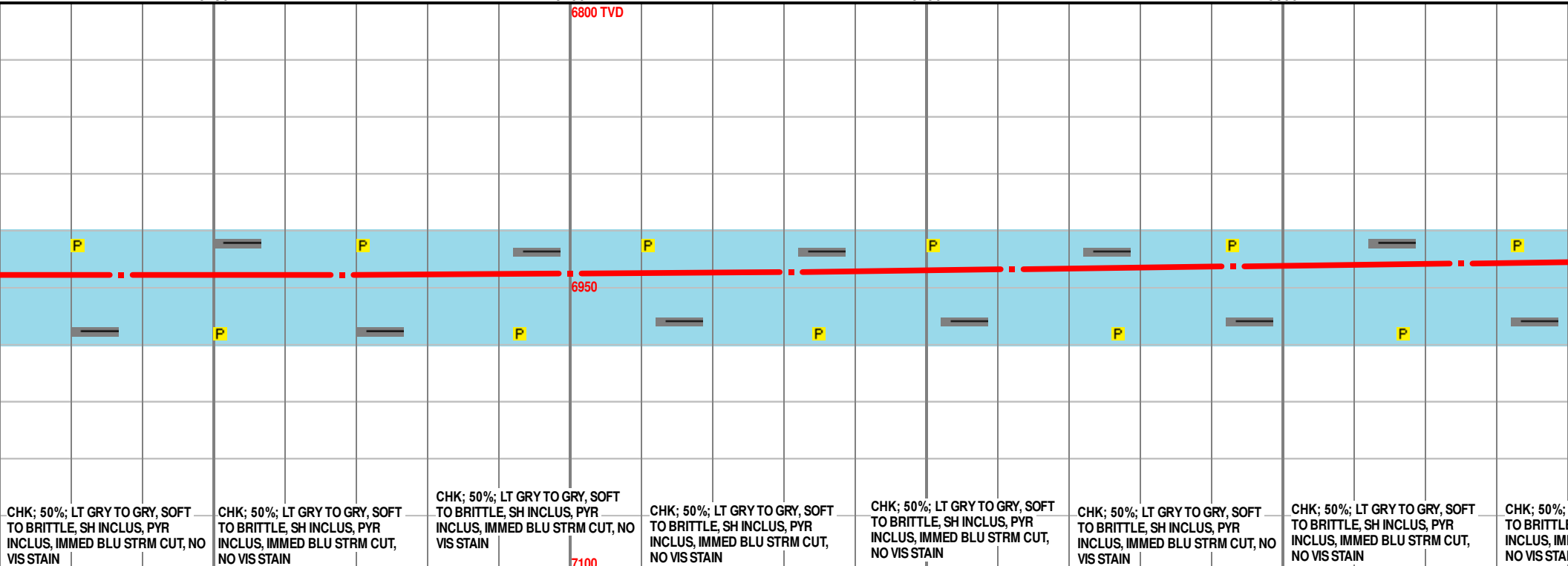
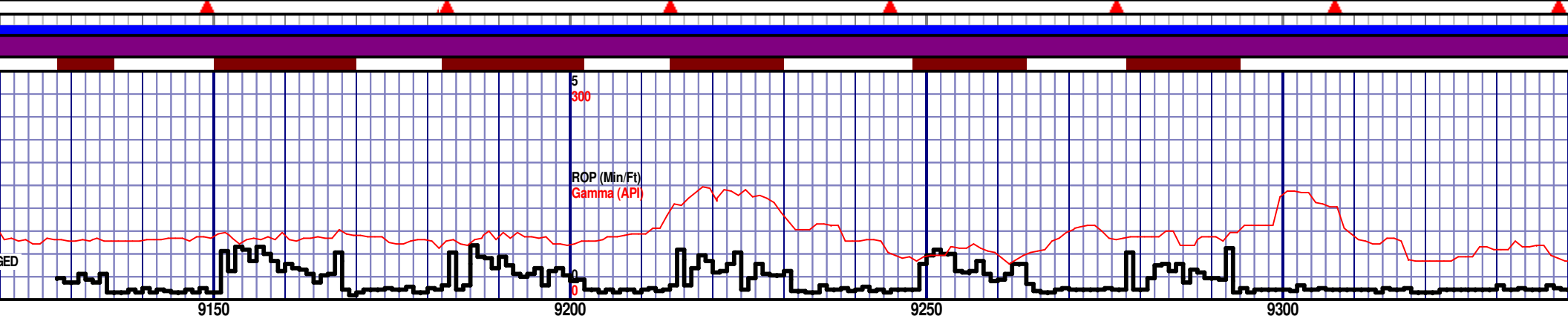
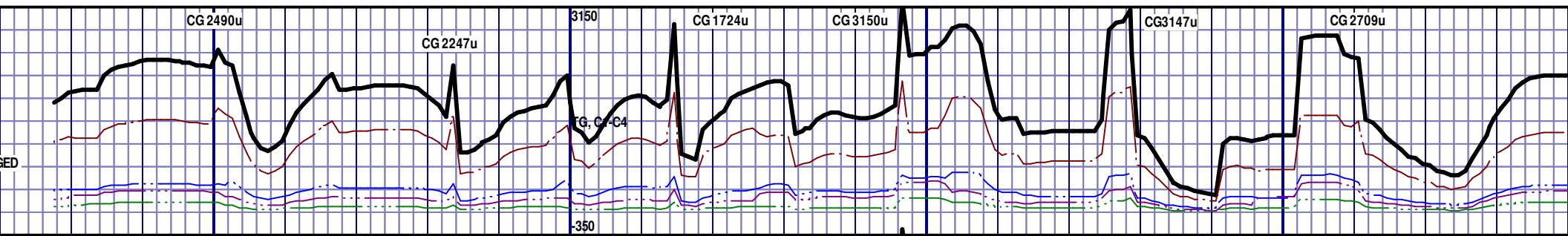
6957.55 92.2° VS 419.18	MD 8481 TVD 6956.46 Az 357.8° Inc 91.7° VS 449.23	MD 8511 TVD 6955.62 Az 358° Inc 91.5° VS 477.39	MD 8542 TVD 6954.65 Az 357.5° Inc 92.1° VS 506.46	MD 8574 TVD 6953.48 Az 357.6° Inc 92.1° VS 536.41	MD 8605 TVD 6952.5 Az 357.1° Inc 91.5° VS 565.39	MD 8636 TVD 6951.53 Az 356.9° Inc 92.1° VS 594.31	MD 8667 TVD 6950.53 Az 356.8° Inc 92.1° VS 623.31
----------------------------	--	--	--	--	---	--	--



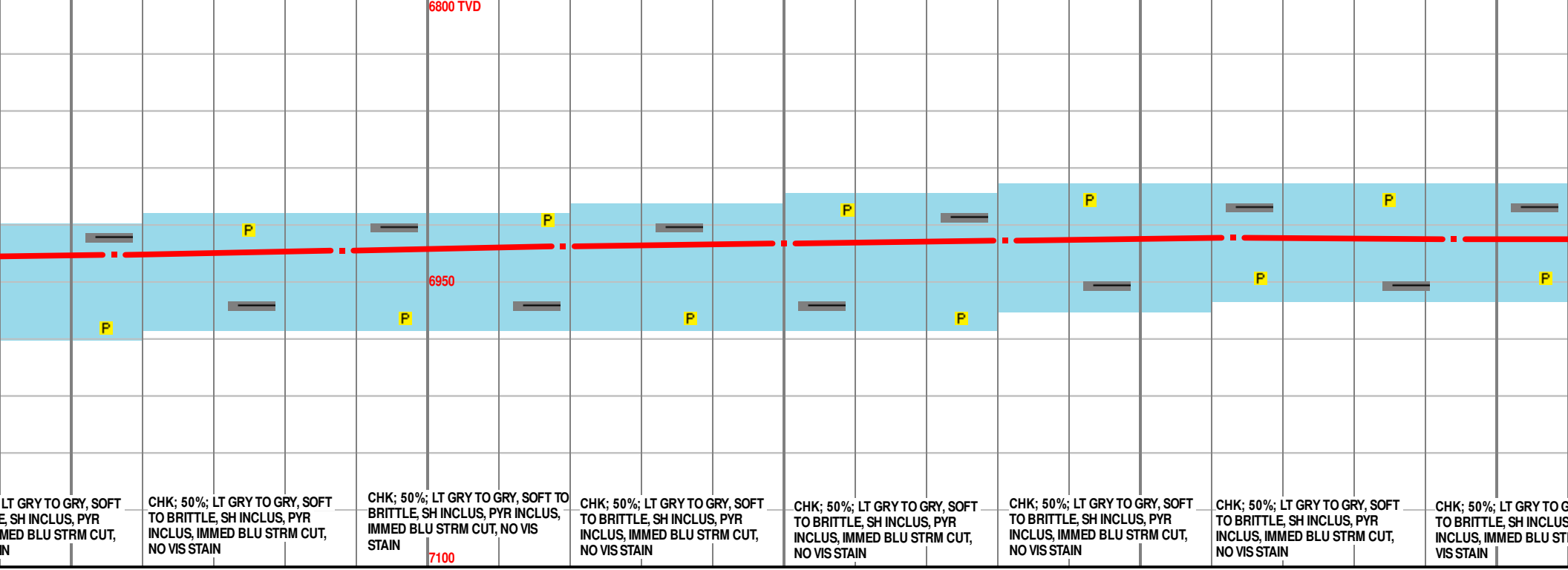
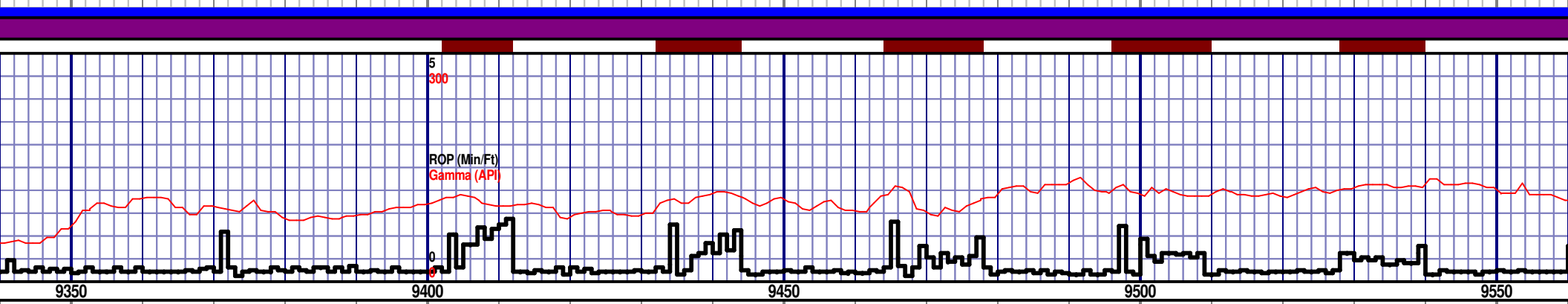
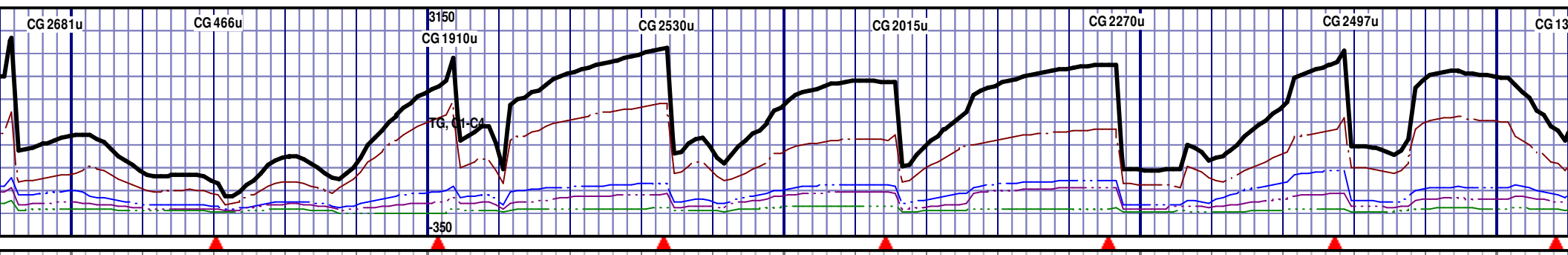
MD 8698 TVD 6949.2 Az 357.3° Inc 91.9° VS 652.12	MD 8730 TVD 6948.23 Az 356.8° Inc 91.6° VS 681.99	MD 8761 TVD 6947.23 Az 356.6° Inc 92.1° VS 710.85	MD 8792 TVD 6946.25 Az 357.1° Inc 91.5° VS 739.74	MD 8822 TVD 6945.44 Az 357.3° Inc 91.6° VS 767.78	MD 8853 TVD 6944.79 Az 356.9° Inc 90.8° VS 796.73	MD 8885 TVD 6944.00 Az 355.7° Inc 89.7° VS 825.78
---	--	--	--	--	--	--



MD 8916 TVD 6944.87 Az 356.4° Inc 89.5° VS 855.20	MD 8947 TVD 6945.03 Az 356.9° Inc 89.9° VS 884.07	MD 8978 TVD 6944.87 Az 354.6° Inc 90.7° VS 912.75	MD 9009 TVD 6944.54 Az 353.8° Inc 90.5° VS 941.11	MD 9041 TVD 6944.15 Az 352° Inc 90.9° VS 970.08	MD 9072 TVD 6943.72 Az 352.4° Inc 90.7° VS 997.98	MD 9104 TVD 6943.8 Az 353.8° Inc 90.5° VS 1027.98
--	--	--	--	--	--	--



39 VS 1027.00	MD 9137 TVD 6943.21 Az 354.3° Inc 90.1° VS 1057.16	MD 9168 TVD 6942.94 Az 354.8° Inc 90.9° VS 1085.59	MD 9200 TVD 6942.24 Az 356.9° Inc 91.6° VS 1115.21	MD 9231 TVD 6941.4 Az 358.7° Inc 91.5° VS 1144.29	MD 9262 TVD 6940.4 Az 0.8° Inc 92.2° VS 1173.71	MD 9293 TVD 6939.05 Az 1.9° Inc 92.8° VS 1203.38	MD 9325 TVD 6938.05 Az 2.2° Inc 93° VS 1233.00
------------------	---	---	---	--	--	---	---



LT GRY TO GRY, SOFT
E, SH INCLUS, PYR
IMMED BLU STRM CUT,
NO VIS STAIN

CHK; 50%; LT GRY TO GRY, SOFT
TO BRITTLE, SH INCLUS, PYR INCLUS,
INCLUS, IMMED BLU STRM CUT,
NO VIS STAIN

CHK; 50%; LT GRY TO GRY, SOFT
TO BRITTLE, SH INCLUS, PYR INCLUS,
IMMED BLU STRM CUT, NO VIS
STAIN

CHK; 50%; LT GRY TO GRY, SOFT
TO BRITTLE, SH INCLUS, PYR
INCLUS, IMMED BLU STRM CUT,
NO VIS STAIN

CHK; 50%; LT GRY TO GRY, SOFT
TO BRITTLE, SH INCLUS, PYR
INCLUS, IMMED BLU STRM CUT,
NO VIS STAIN

CHK; 50%; LT GRY TO GRY, SOFT
TO BRITTLE, SH INCLUS, PYR
INCLUS, IMMED BLU STRM CUT,
NO VIS STAIN

CHK; 50%; LT GRY TO GRY, SOFT
TO BRITTLE, SH INCLUS, PYR
INCLUS, IMMED BLU STRM CUT,
NO VIS STAIN

CHK; 50%; LT GRY TO GRY, SOFT
TO BRITTLE, SH INCLUS, PYR
INCLUS, IMMED BLU STRM CUT,
NO VIS STAIN

MD 9356 TVD 6935.65
Az 2.2° Inc 93.6° VS 1263.88

MD 9388 TVD 6933.58
Az 2° Inc 93.8° VS 1294.59

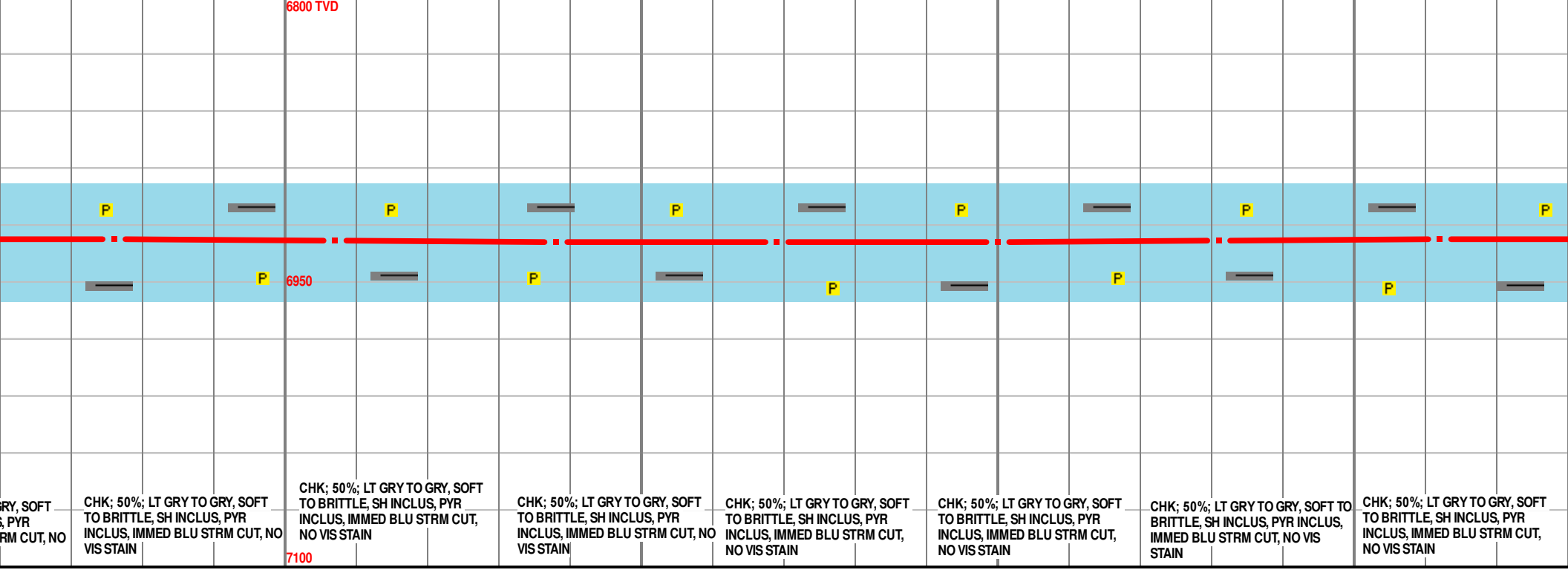
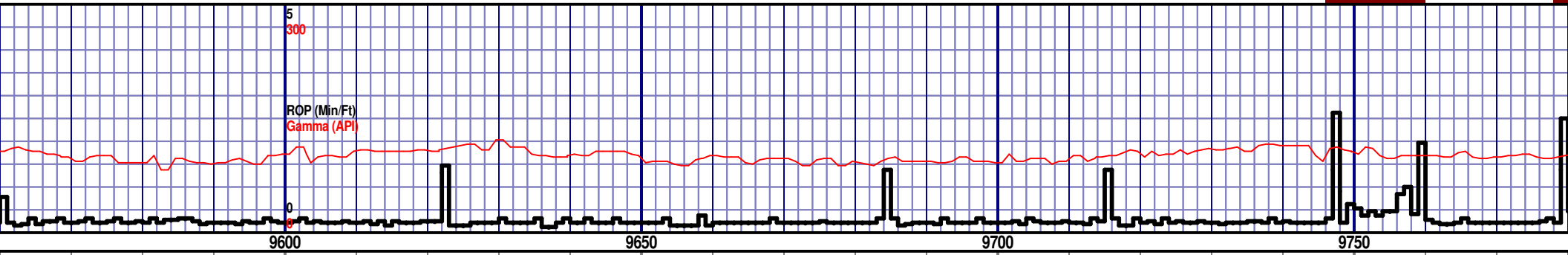
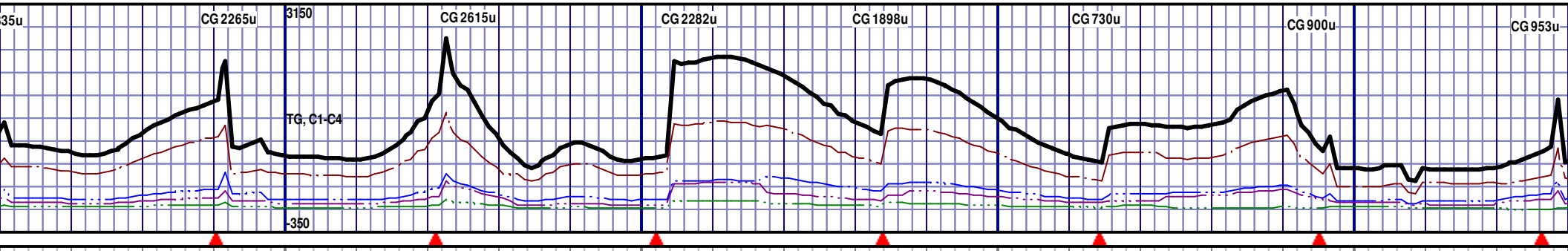
MD 9419 TVD 6931.53
Az 3.1° Inc 93.8° VS 1324.4

MD 9450 TVD 6929.64
Az 3.4° Inc 93.2° VS 1354.32

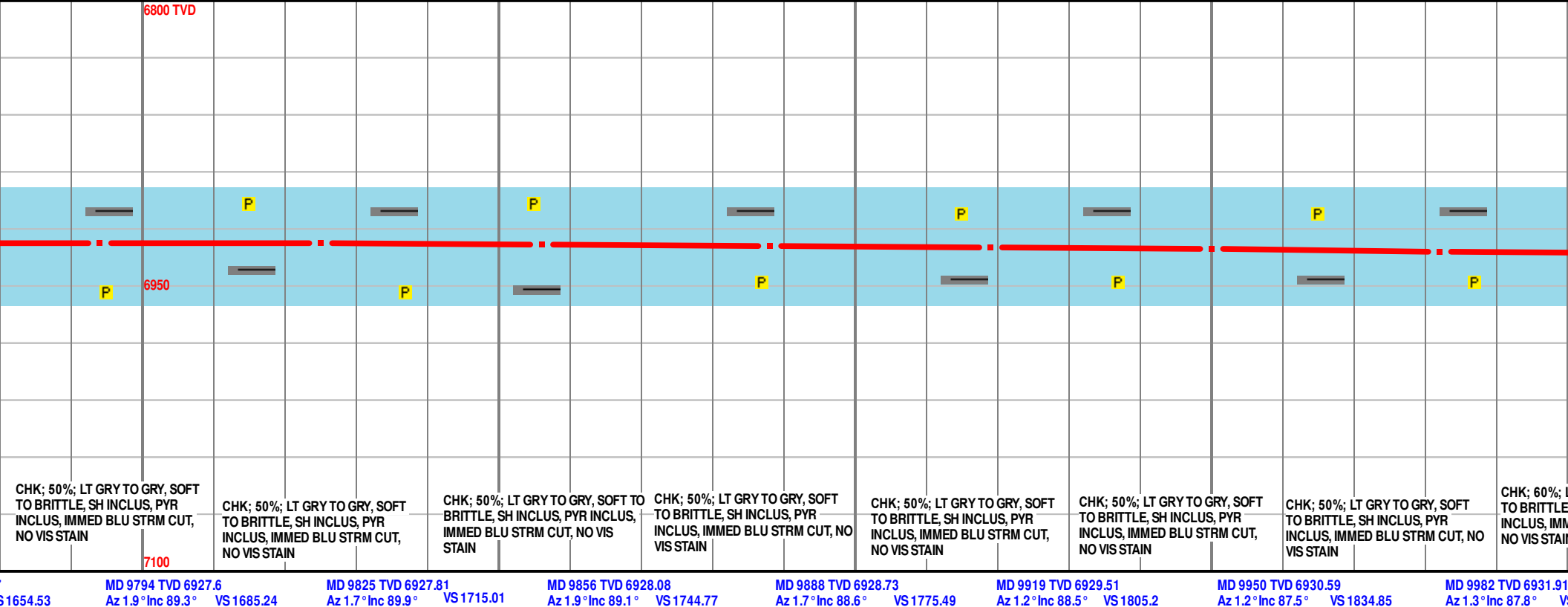
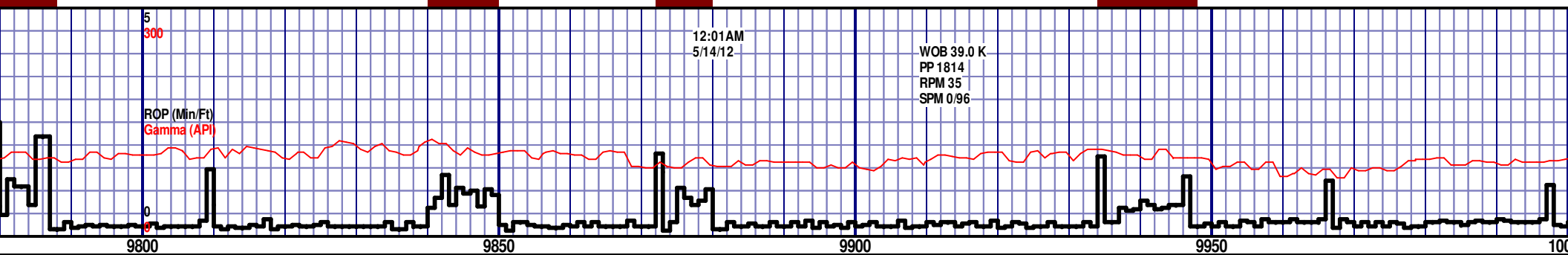
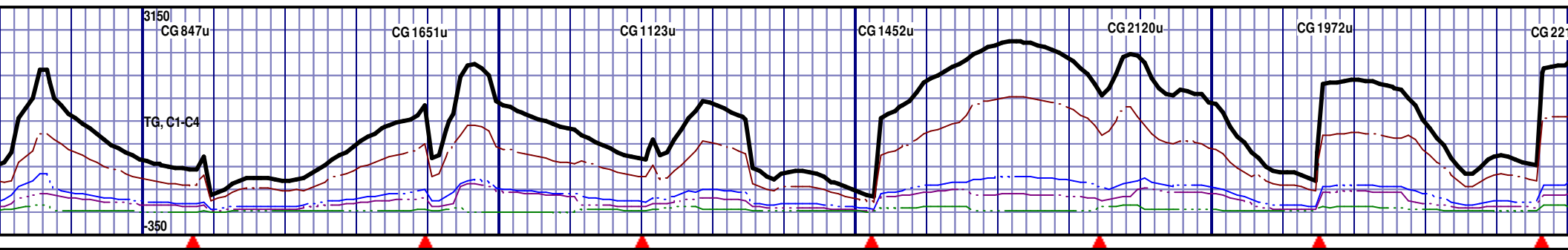
MD 9481 TVD 6928.01
Az 3.6° Inc 92.8° VS 1384.29

MD 9513 TVD 6927.09
Az 2.9° Inc 90.5° VS 1415.22

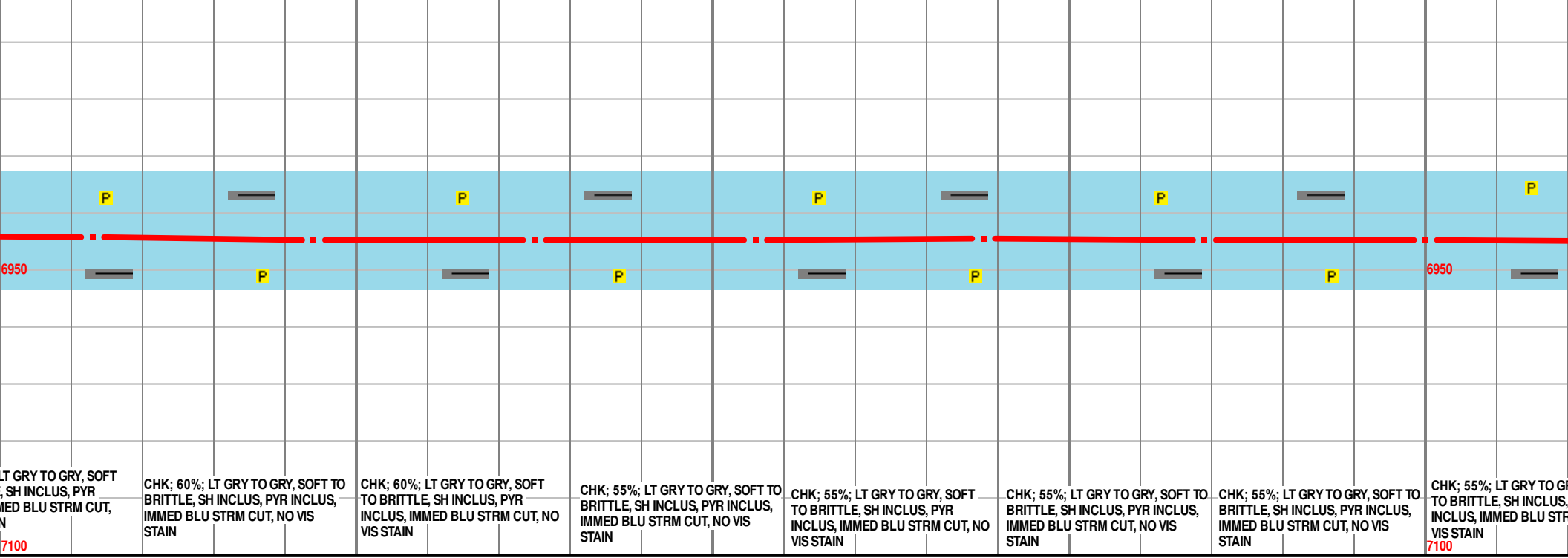
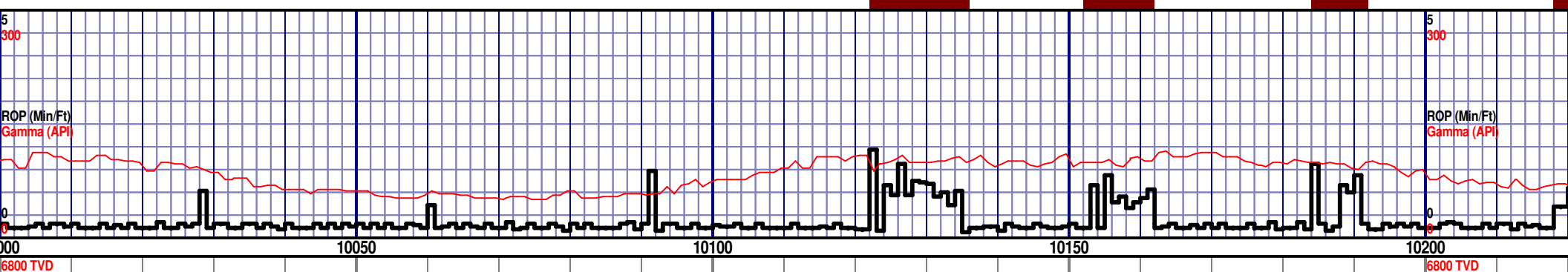
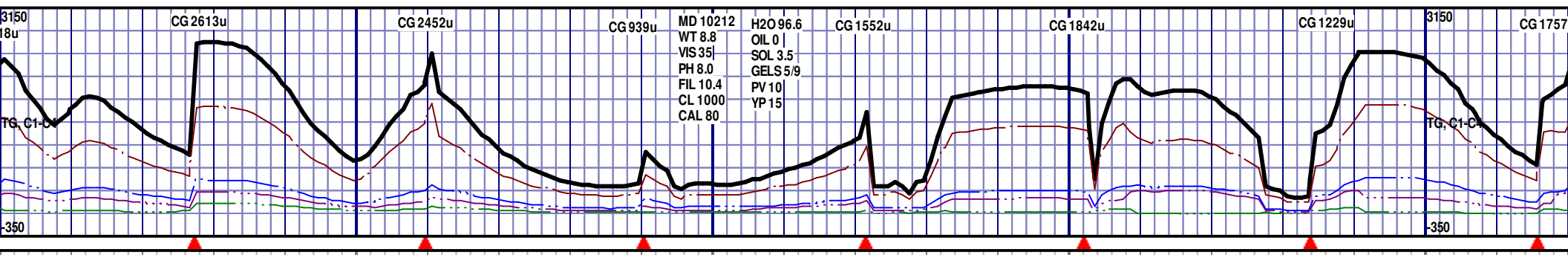
MD 9544 TVD 6927.09
Az 1.9° Inc 88.7° VS 1445.22



MD 9576 TVD 6927.87 Az 2.2° Inc 89.3° VS 1475.81	MD 9607 TVD 6928.3 Az 2.2° Inc 89.1° VS 1505.62	MD 9638 TVD 6928.73 Az 2.2° Inc 89.3° VS 1535.45	MD 9669 TVD 6928.95 Az 1.7° Inc 89.9° VS 1565.23	MD 9700 TVD 6928.76 Az 2° Inc 90.8° VS 1595.01	MD 9731 TVD 6928.14 Az 1.9° Inc 91.5° VS 1624.79	MD 9762 TVD 6927.57 Az 1.5° Inc 90.6° VS
---	--	---	---	---	---	---



MD 9794 TVD 6927.6	MD 9825 TVD 6927.81	MD 9856 TVD 6928.08	MD 9888 TVD 6928.73	MD 9919 TVD 6929.51	MD 9950 TVD 6930.59	MD 9982 TVD 6931.91
Az 1.9° Inc 89.3° VS 1685.24	Az 1.7° Inc 89.9° VS 1715.01	Az 1.9° Inc 89.1° VS 1744.77	Az 1.7° Inc 88.6° VS 1775.49	Az 1.2° Inc 88.5° VS 1805.2	Az 1.2° Inc 87.5° VS 1834.85	Az 1.3° Inc 87.8° VS 1864.40



LT GRY TO GRY, SOFT
SH INCLUS, PYR
IMMED BLU STRM CUT,
N

CHK; 60%; LT GRY TO GRY, SOFT
TO BRITTLE, SH INCLUS, PYR INCLUS,
IMMED BLU STRM CUT, NO VIS
STAIN

CHK; 60%; LT GRY TO GRY, SOFT
TO BRITTLE, SH INCLUS, PYR
INCLUS, IMMED BLU STRM CUT, NO
VIS STAIN

CHK; 55%; LT GRY TO GRY, SOFT
TO BRITTLE, SH INCLUS, PYR INCLUS,
IMMED BLU STRM CUT, NO VIS
STAIN

CHK; 55%; LT GRY TO GRY, SOFT
TO BRITTLE, SH INCLUS, PYR
INCLUS, IMMED BLU STRM CUT, NO
VIS STAIN

CHK; 55%; LT GRY TO GRY, SOFT
TO BRITTLE, SH INCLUS, PYR INCLUS,
IMMED BLU STRM CUT, NO VIS
STAIN

CHK; 55%; LT GRY TO GRY, SOFT
TO BRITTLE, SH INCLUS, PYR INCLUS,
IMMED BLU STRM CUT, NO VIS
STAIN

CHK; 55%; LT GRY TO GRY, SOFT
TO BRITTLE, SH INCLUS, PYR INCLUS,
IMMED BLU STRM CUT, NO VIS
STAIN

CHK; 55%; LT GRY TO GRY, SOFT
TO BRITTLE, SH INCLUS, PYR INCLUS,
IMMED BLU STRM CUT, NO VIS
STAIN

MD 10013 TVD 6933.07
Az 1.2° Inc 87.9° VS 1895.13

MD 10044 TVD 6934.02
Az 1.3° Inc 88.6° VS 1924.79

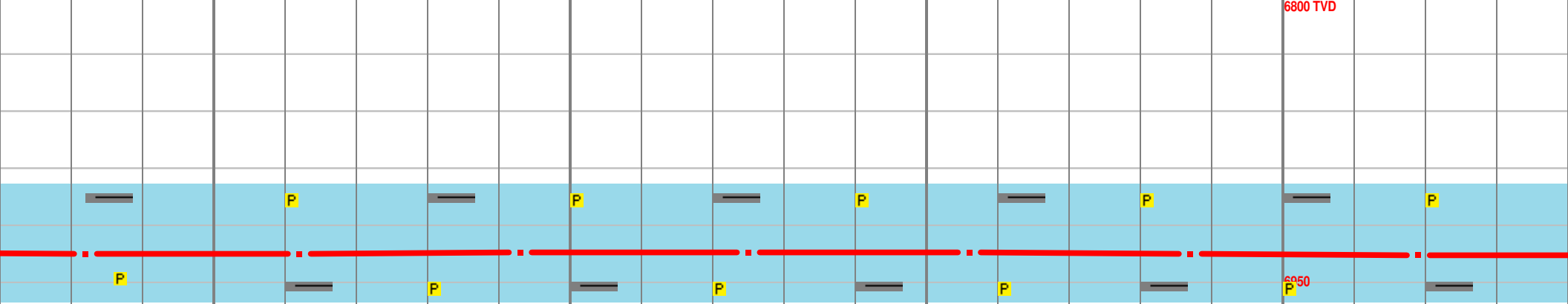
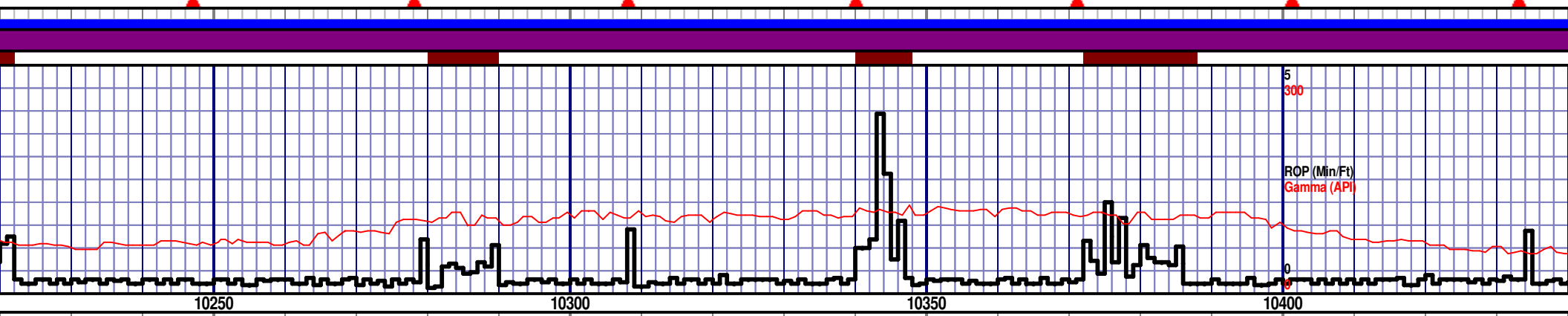
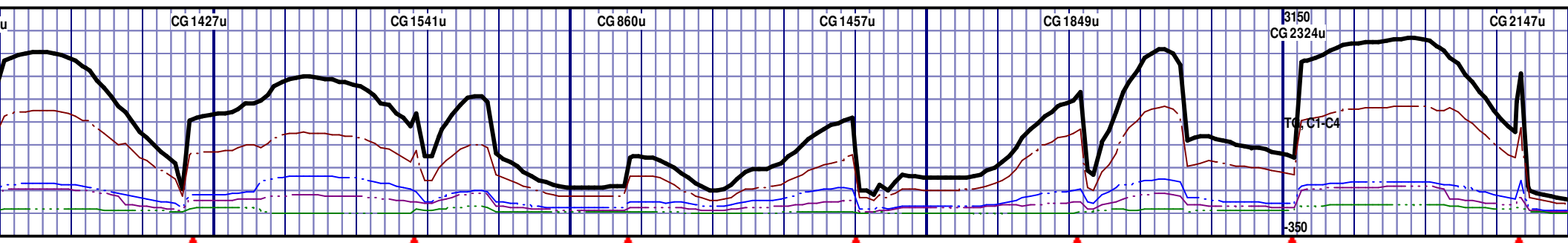
MD 10075 TVD 6934.42
Az 0.1° Inc 89.9° VS 1954.38

MD 10106 TVD 6934.12
Az 0.6° Inc 91.2° VS 1983.92

MD 10138 TVD 6933.76
Az 0.3° Inc 90.1° VS 2014.42

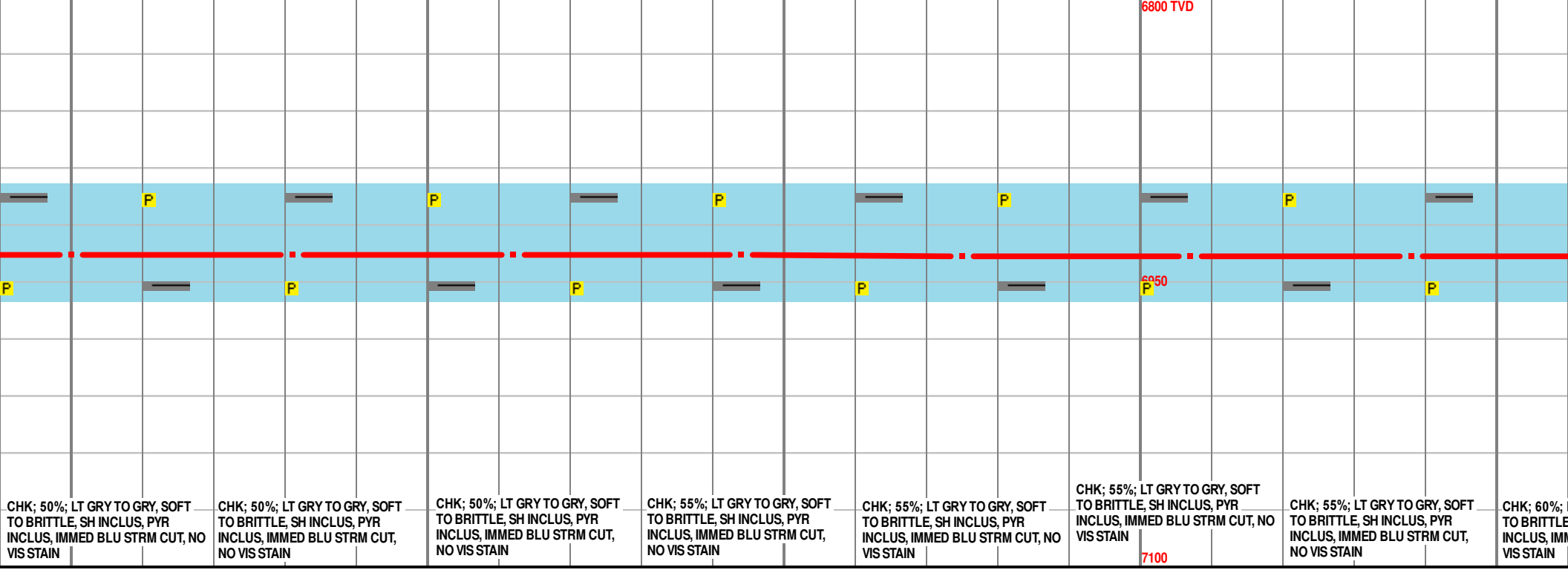
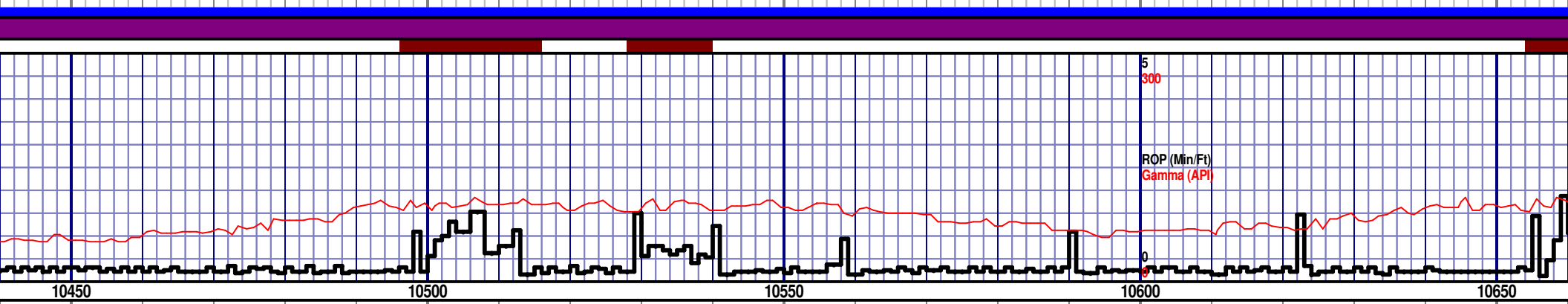
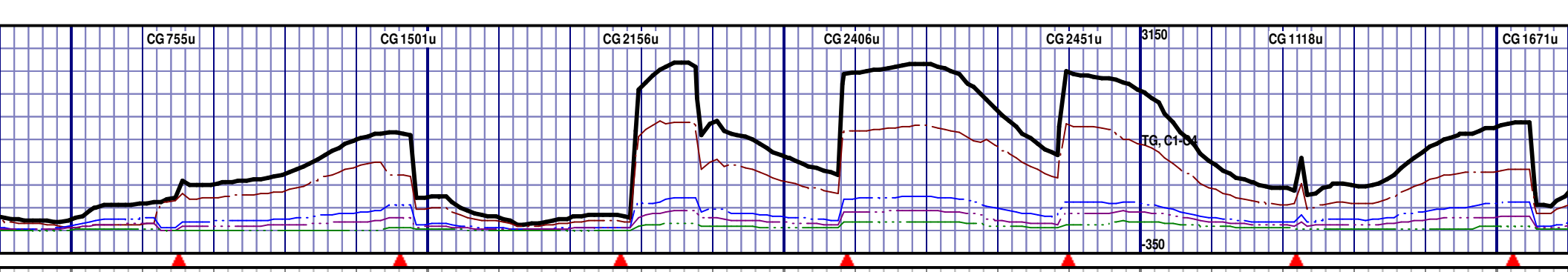
MD 10169 TVD 6934
Az 358.9° Inc 89° VS 2043.83

MD 10200 TVD 6934.46
Az 358.5° Inc 89.3° VS



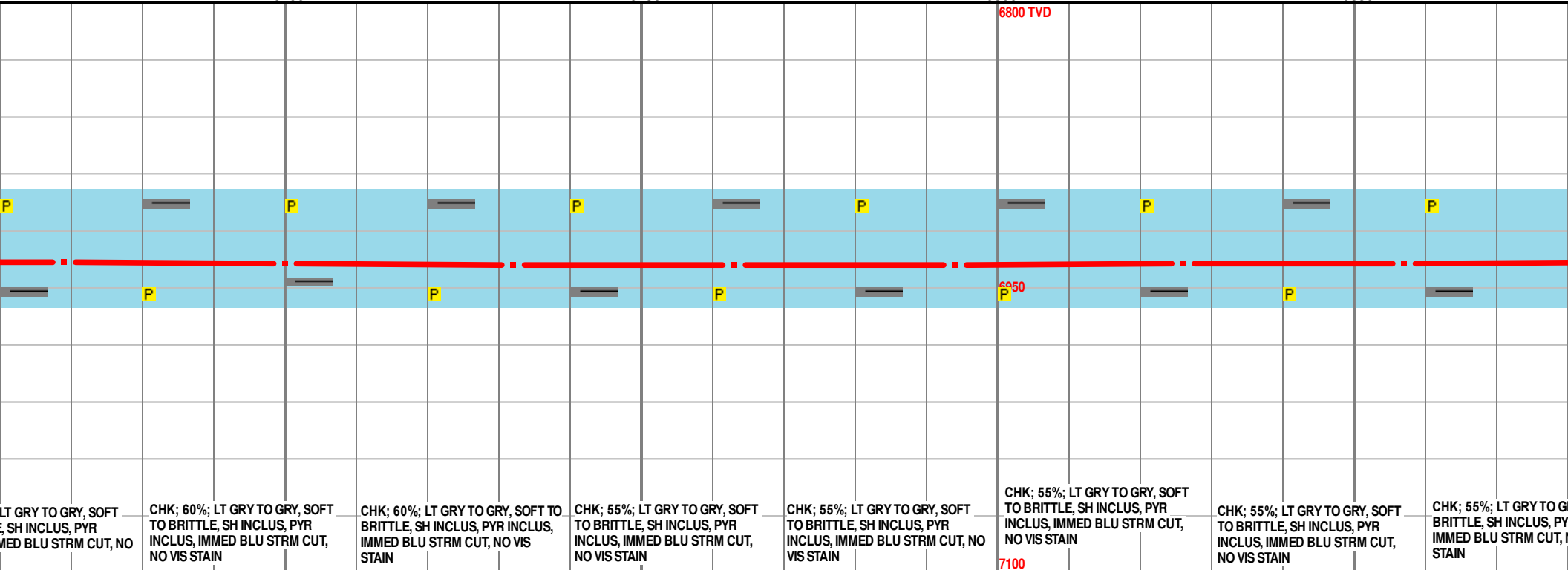
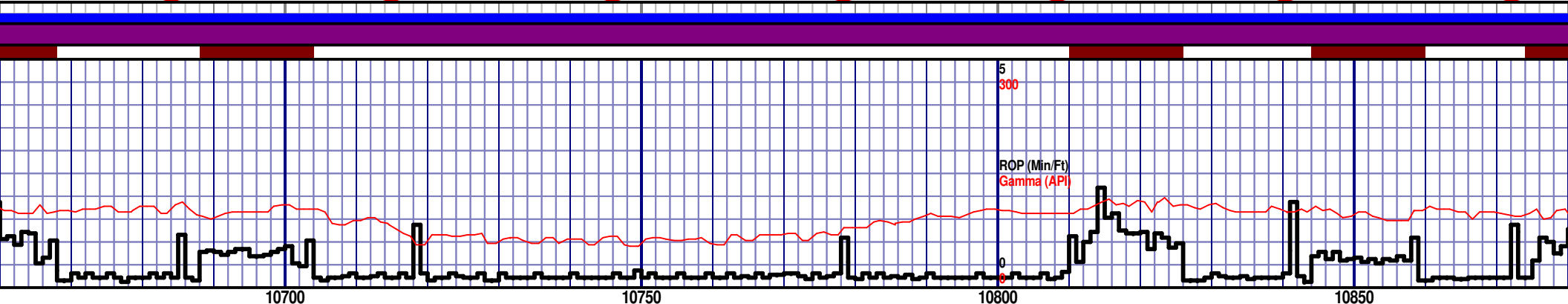
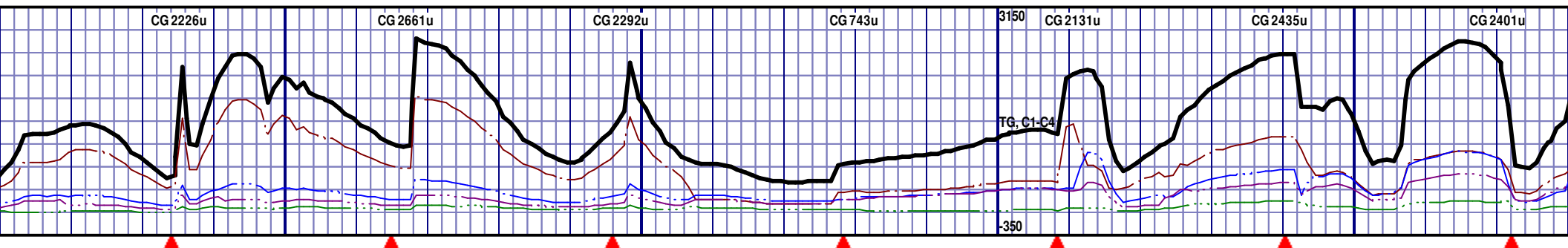
RY, SOFT PYR M CUT, NO	CHK; 55%; LT GRY TO GRY, SOFT TO BRITTLE, SH INCLUS, PYR INCLUS, IMMED BLU STRM CUT, NO VIS STAIN	CHK; 55%; LT GRY TO GRY, SOFT TO BRITTLE, SH INCLUS, PYR INCLUS, IMMED BLU STRM CUT, NO VIS STAIN	CHK; 55%; LT GRY TO GRY, SOFT TO BRITTLE, SH INCLUS, PYR INCLUS, IMMED BLU STRM CUT, NO VIS STAIN	CHK; 55%; LT GRY TO GRY, SOFT TO BRITTLE, SH INCLUS, PYR INCLUS, IMMED BLU STRM CUT, NO VIS STAIN	CHK; 55%; LT GRY TO GRY, SOFT TO BRITTLE, SH INCLUS, PYR INCLUS, IMMED BLU STRM CUT, NO VIS STAIN	CHK; 55%; LT GRY TO GRY, SOFT TO BRITTLE, SH INCLUS, PYR INCLUS, IMMED BLU STRM CUT, NO VIS STAIN	CHK; 55%; LT GRY TO GRY, SOFT TO BRITTLE, SH INCLUS, PYR INCLUS, IMMED BLU STRM CUT, NO VIS STAIN
------------------------------	--	--	--	--	--	--	--

MD 10232 TVD 6934.74 Az 359°Inc 89.7° VS 2103.29	MD 10262 TVD 6934.72 Az 358.5°Inc 90.4° VS 2131.61	MD 10293 TVD 6934.61 Az 359.9°Inc 90.4° VS 2160.95	MD 10325 TVD 6934.5 Az 359.9°Inc 90.4° VS 2191.36	MD 10356 TVD 6934.5 Az 0.4°Inc 89.6° VS 2220.87	MD 10387 TVD 6935.01 Az 0.4°Inc 88.5° VS 2250.41	MD 10419 TVD 6935.76 Az 0.8°Inc 88.8° VS 2280.00
---	---	---	--	--	---	---



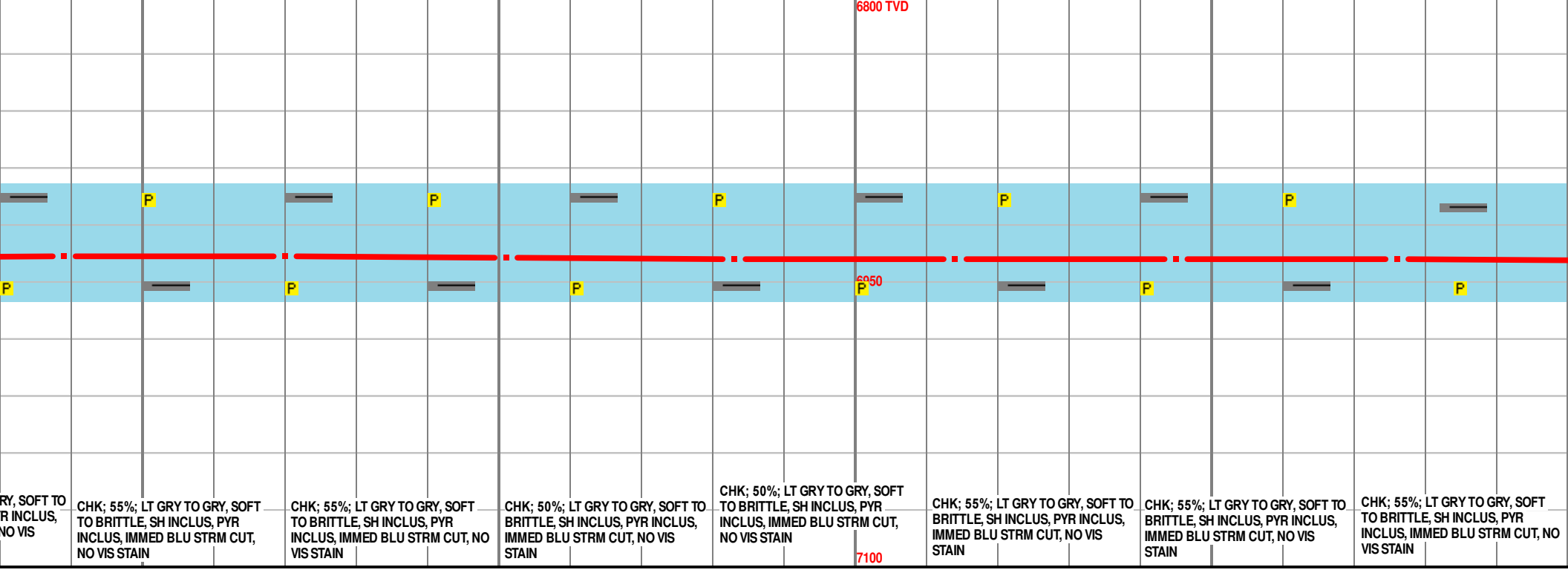
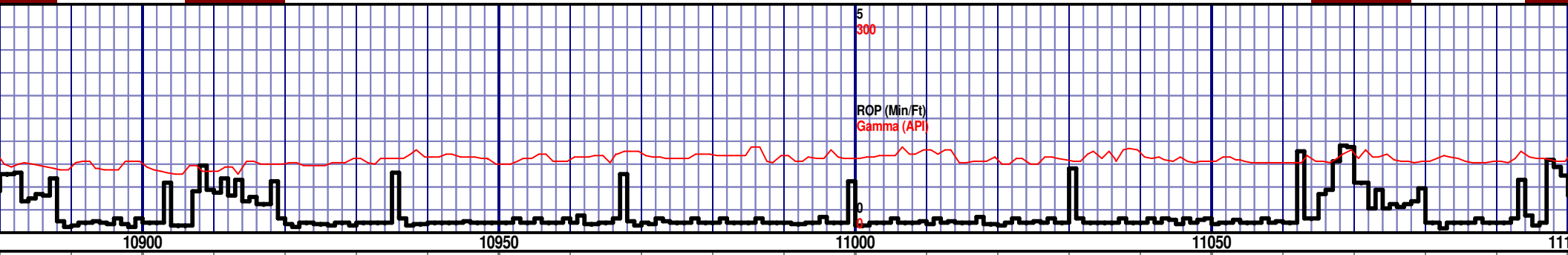
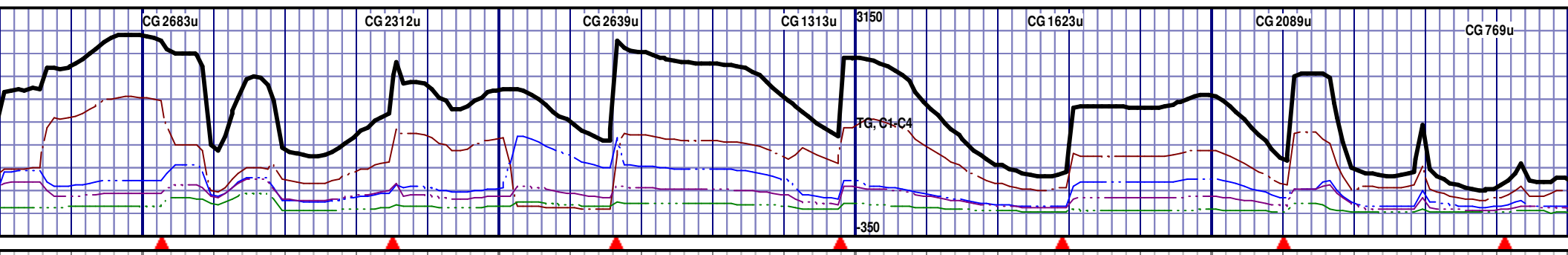
CHK; 50%; LT GRY TO GRY, SOFT TO BRITTLE, SH INCLUS, PYR INCLUS, IMMED BLU STRM CUT, NO VIS STAIN	CHK; 50%; LT GRY TO GRY, SOFT TO BRITTLE, SH INCLUS, PYR INCLUS, IMMED BLU STRM CUT, NO VIS STAIN	CHK; 50%; LT GRY TO GRY, SOFT TO BRITTLE, SH INCLUS, PYR INCLUS, IMMED BLU STRM CUT, NO VIS STAIN	CHK; 55%; LT GRY TO GRY, SOFT TO BRITTLE, SH INCLUS, PYR INCLUS, IMMED BLU STRM CUT, NO VIS STAIN	CHK; 55%; LT GRY TO GRY, SOFT TO BRITTLE, SH INCLUS, PYR INCLUS, IMMED BLU STRM CUT, NO VIS STAIN	CHK; 55%; LT GRY TO GRY, SOFT TO BRITTLE, SH INCLUS, PYR INCLUS, IMMED BLU STRM CUT, NO VIS STAIN	CHK; 55%; LT GRY TO GRY, SOFT TO BRITTLE, SH INCLUS, PYR INCLUS, IMMED BLU STRM CUT, NO VIS STAIN	CHK; 55%; LT GRY TO GRY, SOFT TO BRITTLE, SH INCLUS, PYR INCLUS, IMMED BLU STRM CUT, NO VIS STAIN	CHK; 60%; LT GRY TO GRY, SOFT TO BRITTLE, SH INCLUS, PYR INCLUS, IMMED BLU STRM CUT, NO VIS STAIN
---	---	---	---	---	---	---	---	---

MD 10450 TVD 6936.09 Az 0.5° Inc 90° VS 2310.51	MD 10481 TVD 6935.82 Az 0.8° Inc 91° VS 2340.09	MD 10512 TVD 6935.55 Az 0.8° Inc 90° VS 2369.69	MD 10544 TVD 6935.91 Az 0.3° Inc 88.7° VS 2400.22	MD 10575 TVD 6936.56 Az 0.1° Inc 88.9° VS 2429.72	MD 10607 TVD 6936.87 Az 0.4° Inc 90° VS 2460.19	MD 10638 TVD 6936.65 Az 1° Inc 90.8° VS 2489.72
--	--	--	--	--	--	--



LT GRY TO GRY, SOFT
SH INCLUS, PYR
IMMED BLU STRM CUT, NO
CHK; 60%; LT GRY TO GRY, SOFT
TO BRITTLE, SH INCLUS, PYR
INCLUS, IMMED BLU STRM CUT,
NO VIS STAIN
CHK; 60%; LT GRY TO GRY, SOFT TO
BRITTLE, SH INCLUS, PYR INCLUS,
IMMED BLU STRM CUT, NO VIS
STAIN
CHK; 55%; LT GRY TO GRY, SOFT
TO BRITTLE, SH INCLUS, PYR
INCLUS, IMMED BLU STRM CUT,
NO VIS STAIN
CHK; 55%; LT GRY TO GRY, SOFT
TO BRITTLE, SH INCLUS, PYR
INCLUS, IMMED BLU STRM CUT, NO
VIS STAIN
CHK; 55%; LT GRY TO GRY, SOFT
TO BRITTLE, SH INCLUS, PYR
INCLUS, IMMED BLU STRM CUT,
NO VIS STAIN
CHK; 55%; LT GRY TO GRY, SOFT
TO BRITTLE, SH INCLUS, PYR
INCLUS, IMMED BLU STRM CUT,
NO VIS STAIN
CHK; 55%; LT GRY TO GRY, SOFT
TO BRITTLE, SH INCLUS, PYR
INCLUS, IMMED BLU STRM CUT,
NO VIS STAIN
CHK; 55%; LT GRY TO GRY, SOFT
TO BRITTLE, SH INCLUS, PYR
INCLUS, IMMED BLU STRM CUT,
NO VIS STAIN

MD 10669 TVD 6936.49
Az 0.8° Inc 89.8° VS 2519.41
MD 10700 TVD 6936.98
Az 359.6° Inc 88.4° VS 2548.92
MD 10732 TVD 6937.67
Az 0.1° Inc 89.1° VS 2579.32
MD 10763 TVD 6937.89
Az 359.9° Inc 90.1° VS 2608.8
MD 10794 TVD 6937.65
Az 359.9° Inc 90.8° VS 2638.26
MD 10826 TVD 6937.28
Az 359.4° Inc 90.5° VS 2668.62
MD 10857 TVD 6936.93
Az 358.7° Inc 90.8° VS 2699.9



RY, SOFT TO
R INCLUS,
NO VIS

CHK; 55%; LT GRY TO GRY, SOFT
TO BRITTLE, SH INCLUS, PYR
INCLUS, IMMED BLU STRM CUT,
NO VIS STAIN

CHK; 55%; LT GRY TO GRY, SOFT
TO BRITTLE, SH INCLUS, PYR
INCLUS, IMMED BLU STRM CUT, NO
VIS STAIN

CHK; 50%; LT GRY TO GRY, SOFT
TO BRITTLE, SH INCLUS, PYR
INCLUS, IMMED BLU STRM CUT, NO
VIS STAIN

CHK; 50%; LT GRY TO GRY, SOFT
TO BRITTLE, SH INCLUS, PYR
INCLUS, IMMED BLU STRM CUT,
NO VIS STAIN

CHK; 55%; LT GRY TO GRY, SOFT
TO BRITTLE, SH INCLUS, PYR INCLUS,
IMMED BLU STRM CUT, NO VIS
STAIN

CHK; 55%; LT GRY TO GRY, SOFT
TO BRITTLE, SH INCLUS, PYR INCLUS,
IMMED BLU STRM CUT, NO VIS
STAIN

CHK; 55%; LT GRY TO GRY, SOFT
TO BRITTLE, SH INCLUS, PYR
INCLUS, IMMED BLU STRM CUT, NO
VIS STAIN

MD 10889 TVD 6936.65
Az 357.3° Inc 90.2° VS 2728.00

MD 10920 TVD 6936.82
Az 356.2° Inc 89.2° VS 2756.89

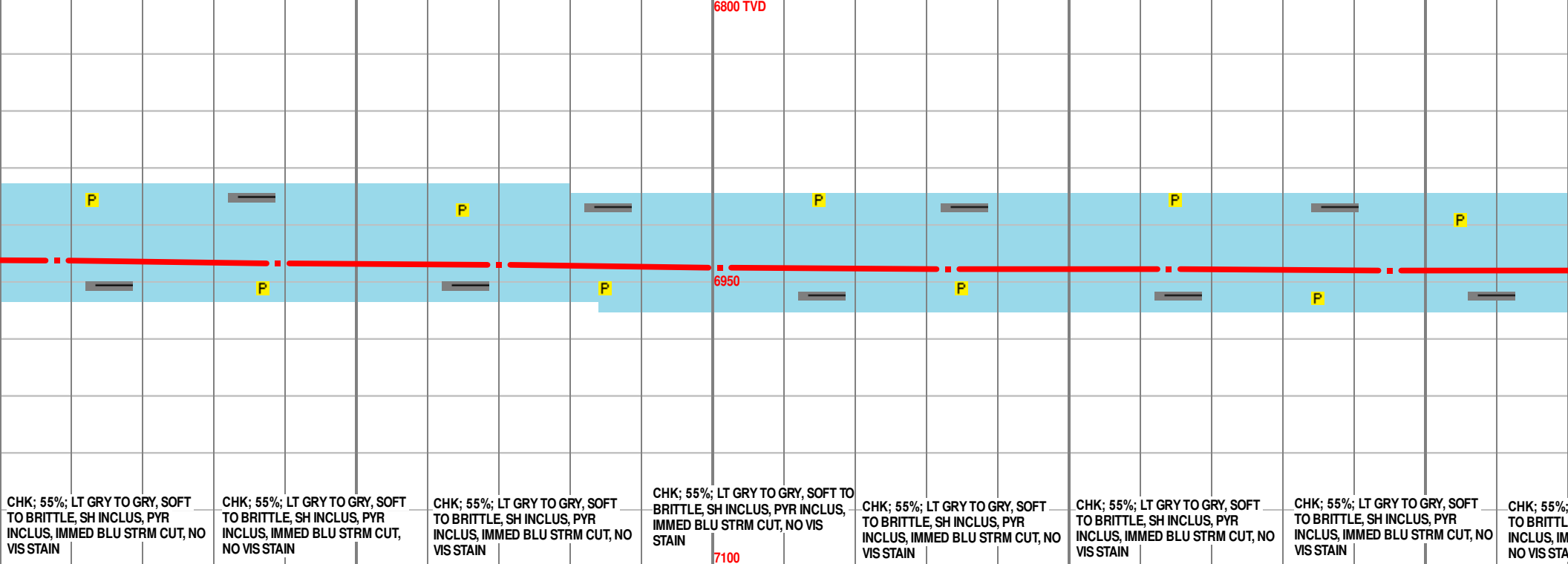
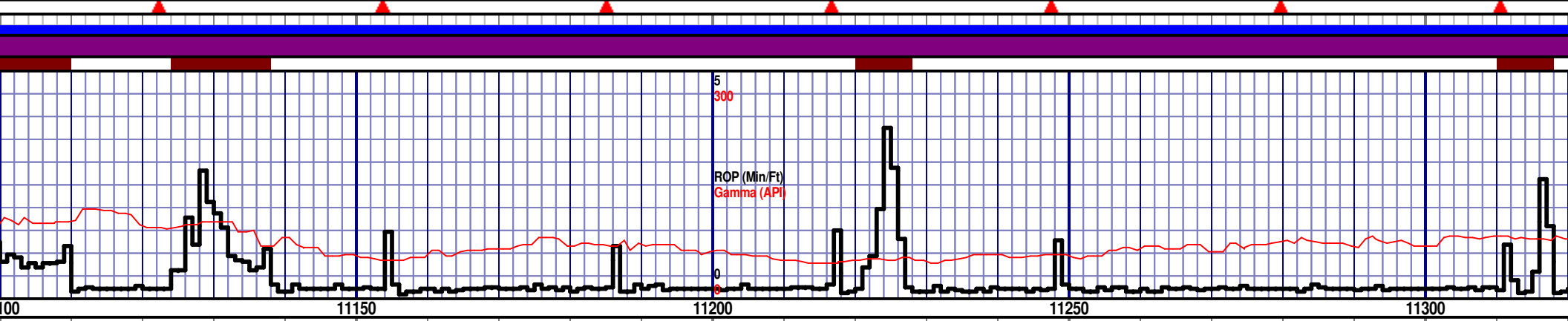
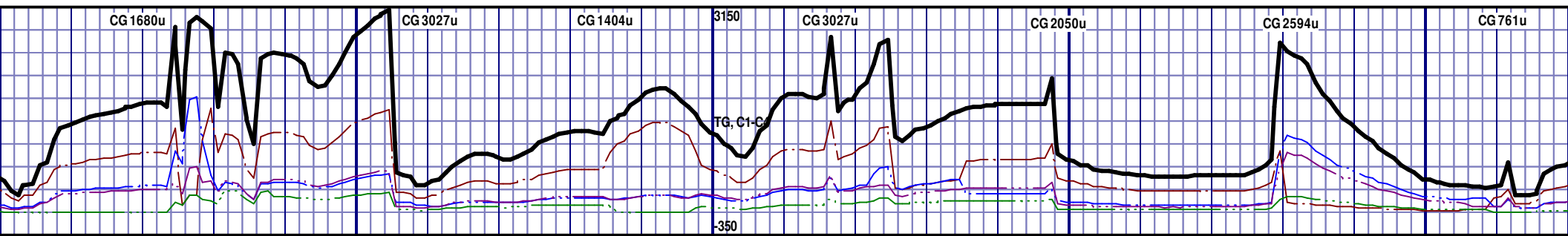
MD 10951 TVD 6937.36
Az 356.6° Inc 88.8° VS 2785.70

MD 10983 TVD 6937.91
Az 356.4° Inc 89.2° VS 2815.47

MD 11014 TVD 6938.13
Az 354.6° Inc 90° VS 2844.10

MD 11045 TVD 6937.94
Az 354.5° Inc 90.7° VS 2872.54

MD 11076 TVD 6937.91
Az 356.4° Inc 89.4° VS 2901.00



CHK; 55%; LT GRY TO GRY, SOFT TO BRITTLE, SH INCLUS, PYR INCLUS, IMMED BLU STRM CUT, NO VIS STAIN

CHK; 55%; LT GRY TO GRY, SOFT TO BRITTLE, SH INCLUS, PYR INCLUS, IMMED BLU STRM CUT, NO VIS STAIN

CHK; 55%; LT GRY TO GRY, SOFT TO BRITTLE, SH INCLUS, PYR INCLUS, IMMED BLU STRM CUT, NO VIS STAIN

CHK; 55%; LT GRY TO GRY, SOFT TO BRITTLE, SH INCLUS, PYR INCLUS, IMMED BLU STRM CUT, NO VIS STAIN

CHK; 55%; LT GRY TO GRY, SOFT TO BRITTLE, SH INCLUS, PYR INCLUS, IMMED BLU STRM CUT, NO VIS STAIN

CHK; 55%; LT GRY TO GRY, SOFT TO BRITTLE, SH INCLUS, PYR INCLUS, IMMED BLU STRM CUT, NO VIS STAIN

CHK; 55%; LT GRY TO GRY, SOFT TO BRITTLE, SH INCLUS, PYR INCLUS, IMMED BLU STRM CUT, NO VIS STAIN

CHK; 55%; LT GRY TO GRY, SOFT TO BRITTLE, SH INCLUS, PYR INCLUS, IMMED BLU STRM CUT, NO VIS STAIN

MD 11108 TVD 6938.7 Az 358° Inc 87.8° VS 2931.006

MD 11139 TVD 6939.89 Az 359° Inc 87.8° VS 2960.26

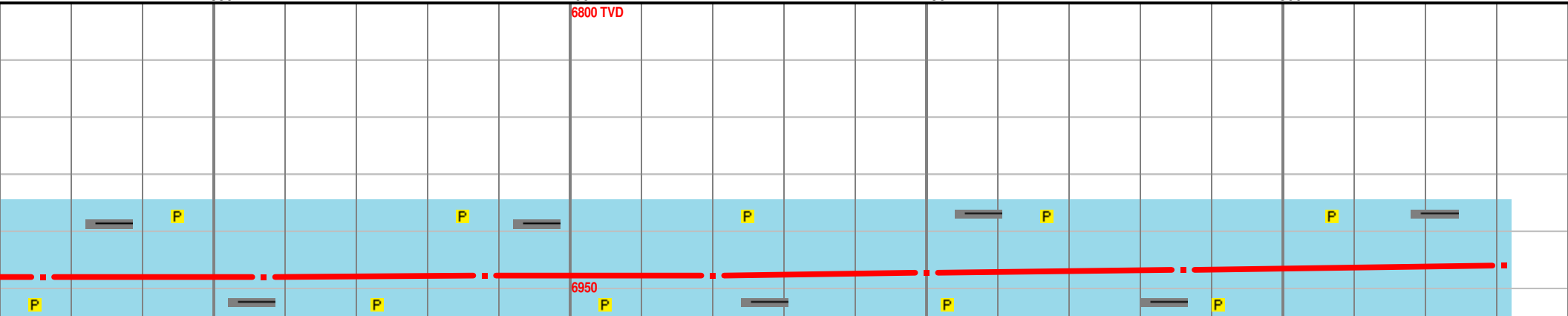
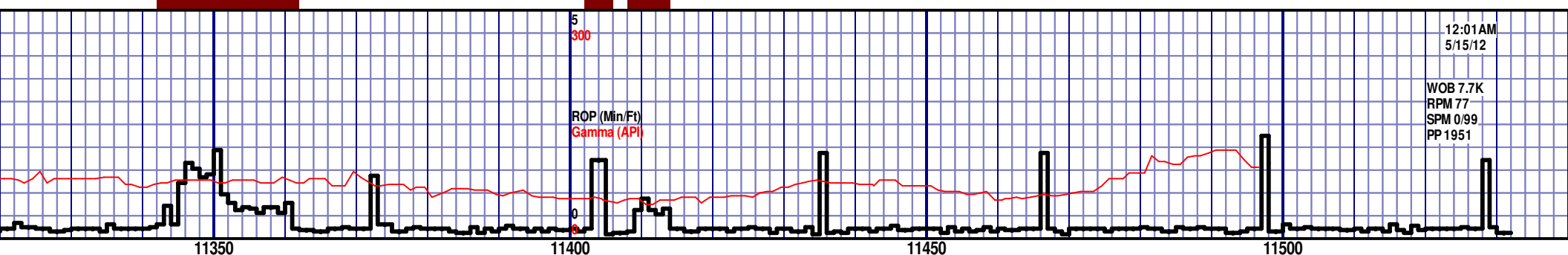
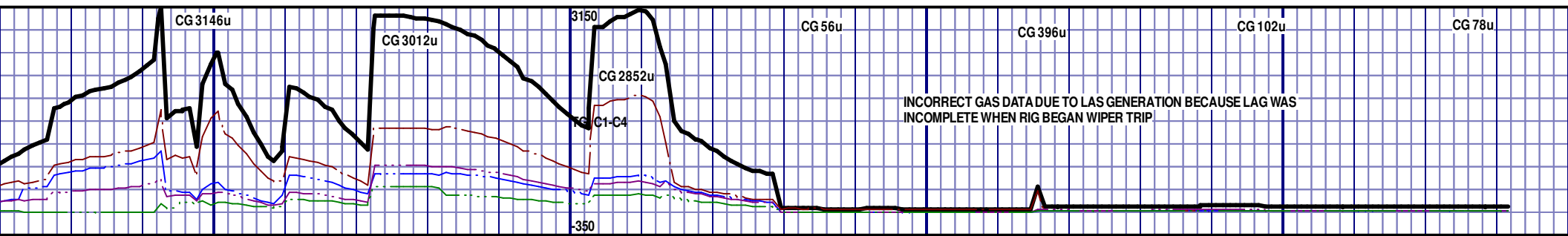
MD 11170 TVD 6941.08 Az 359.2° Inc 87.8° VS 2989.56

MD 11201 TVD 6942.16 Az 359.2° Inc 88.2° VS 3018.89

MD 11233 TVD 6942.91 Az 359.6° Inc 89.1° VS 3049.2

MD 11264 TVD 6943.32 Az 0.1° Inc 89.4° VS 3078.65

MD 11295 TVD 6943.78 Az 359.7° Inc 88.9° VS 3108.



LT GRY TO GRY, SOFT E, SH INCLUS, PYR IMMED BLU STRM CUT, IN	CHK; 55%; LT GRY TO GRY, SOFT TO BRITTLE, SH INCLUS, PYR INCLUS, IMMED BLU STRM CUT, NO VIS STAIN	CHK; 55%; LT GRY TO GRY, SOFT TO BRITTLE, SH INCLUS, PYR INCLUS, IMMED BLU STRM CUT, NO VIS STAIN	CHK; 55%; LT GRY TO GRY, SOFT TO BRITTLE, SH INCLUS, PYR INCLUS, IMMED BLU STRM CUT, NO VIS STAIN	CHK; 55%; LT GRY TO GRY, SOFT TO BRITTLE, SH INCLUS, PYR INCLUS, IMMED BLU STRM CUT, NO VIS STAIN	CHK; 55%; LT GRY TO GRY, SOFT TO BRITTLE, SH INCLUS, PYR INCLUS, IMMED BLU STRM CUT, NO VIS STAIN	CHK; 55%; LT GRY TO GRY, SOFT TO BRITTLE, SH INCLUS, PYR INCLUS, IMMED BLU STRM CUT, NO VIS STAIN
---	--	--	--	--	--	--

BOTTOMS UP GAS 86u

DRILLER'S TD @ 11531' MD AT
12:15 AM ON 5/15/12

11550

TD @ 11531' MD

RELEASED 5/15/12

THANK YOU FROM RYAN
BLEESS, DAVID PACE
AND HORIZON WELL
LOGGING, LLC