



7136 South Yale Avenue, Suite 414
Tulsa, Oklahoma 74136-6378

phone 918.925.9739

fax 866.534.4559

WWW.HZMUD.COM

Customer Information

Operator: **Mineral Resources, Inc**
3109 35th Ave
B101
Greeley, Colorado 80634

Geologist: **Jack Wiener**
Halliburton

Mud Logging Details

Logger: **Ryan Bleess & Cory Shorette**

Log Interval: 7350' to 12154'

Start Date: June 19, 2012

Release Date: June 25, 2012

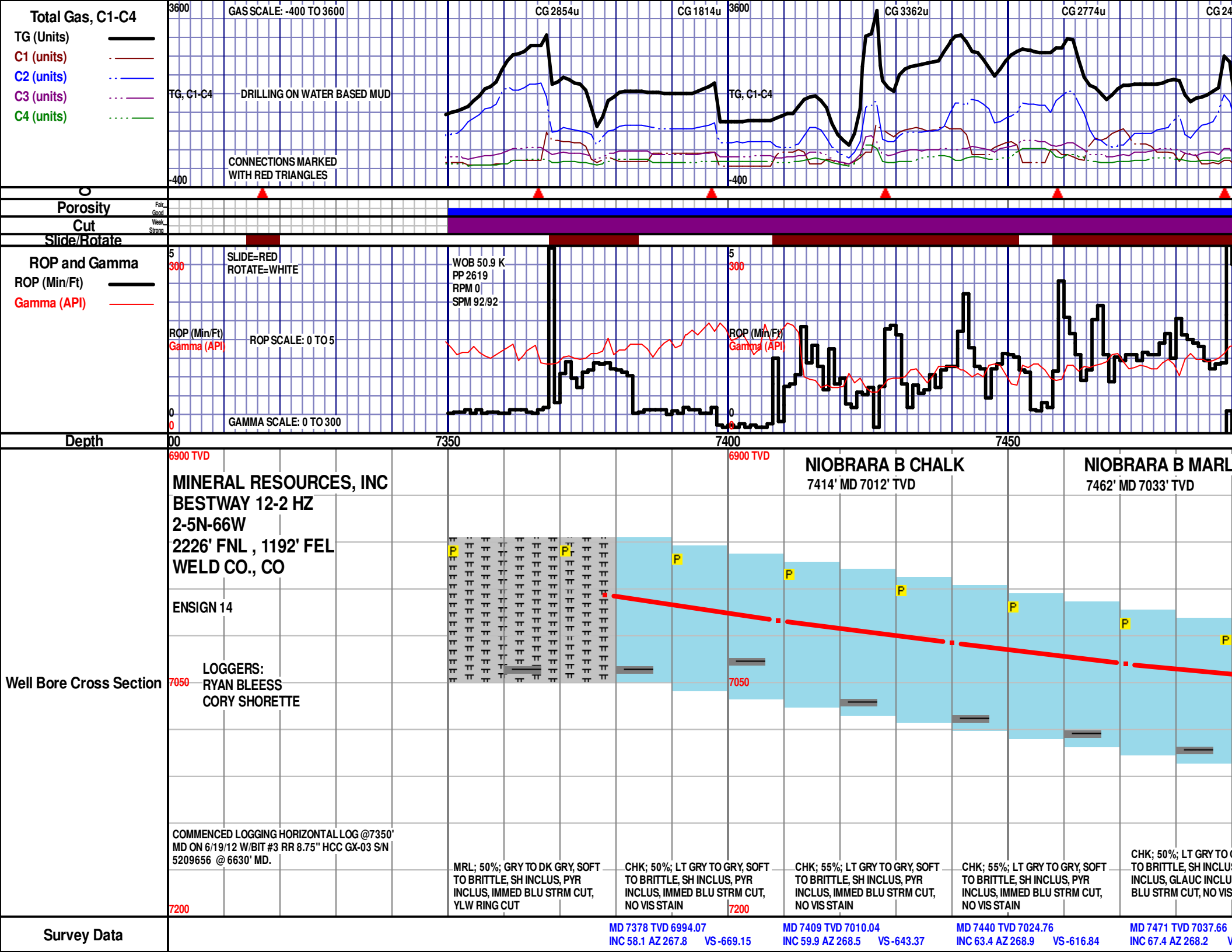
Well Information

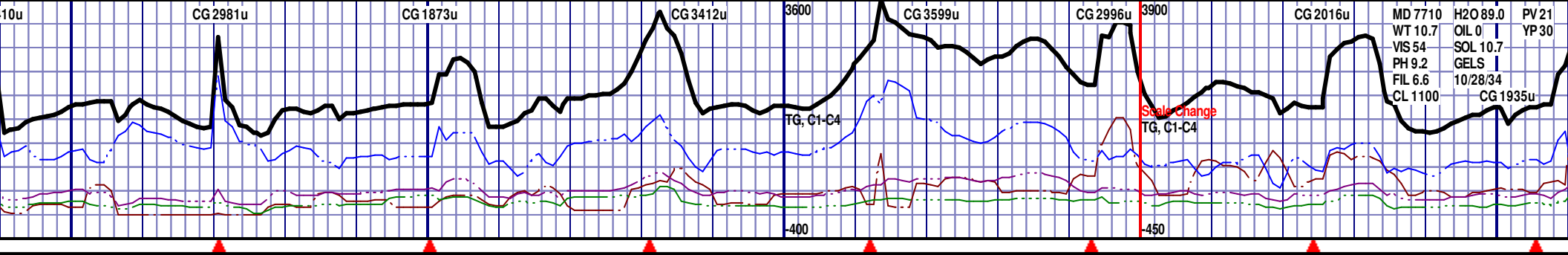
Well Name: **Bestway 12-2 HZ**

Location: **2-5N-66W**
2226' FNL, 1192' FEL

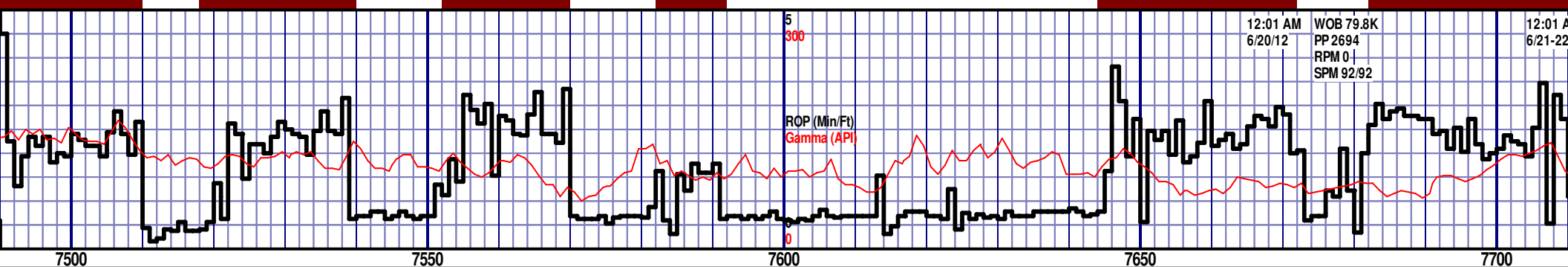
County: **Weld**
State: **Colorado**

Drilling Rig: **ENSIGN 14**
Total Depth: **12154'**
TD Date: **June 24, 2012**
Formation: **Niobrara**
KB Elevation: **4713'**
GR Elevation: **4699'**
API Number: **05-123-34649**

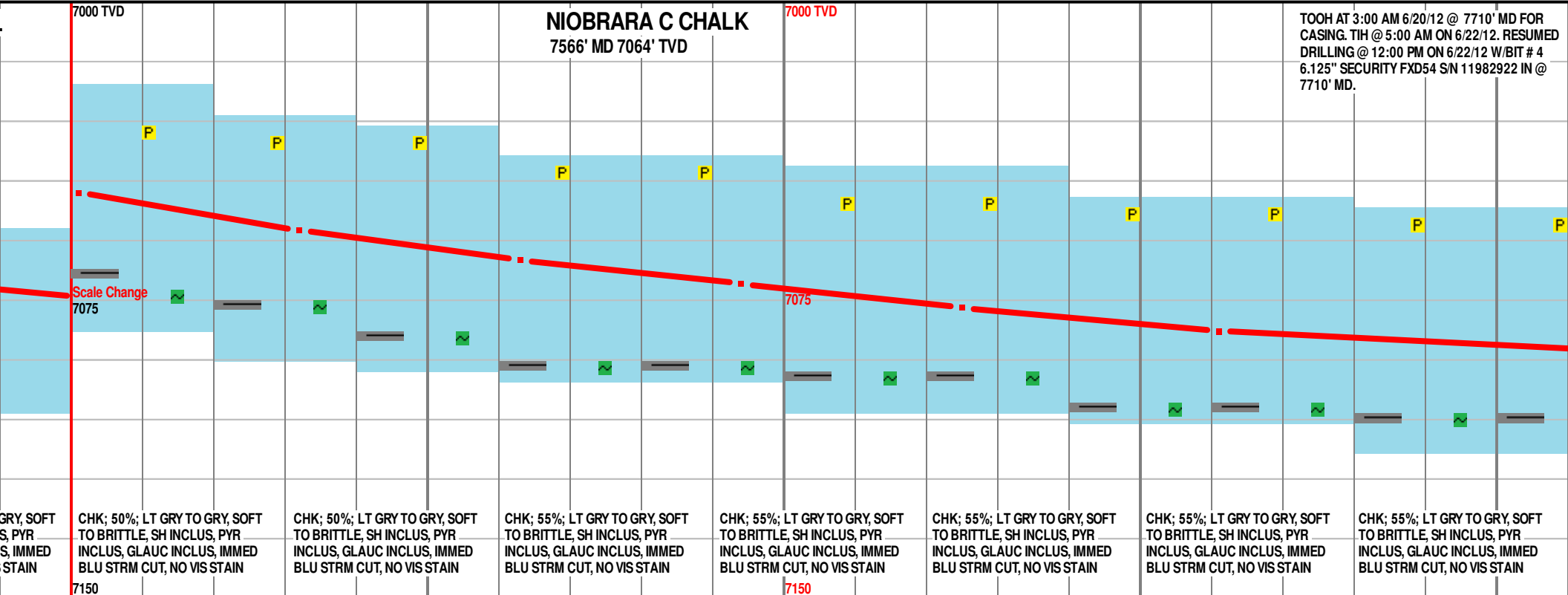




MD 7710
WT 10.7
VIS 54
PH 9.2
FIL 6.6
CL 1100
H2O 89.0
OIL 0
SOL 10.7
GELS
10/28/34
PV 21
YP 30
CG 1935u



12:01 AM
6/20/12
WOB 79.8K
PP 2694
RPM 0
SPM 92/92
12:01 AM
6/21-22

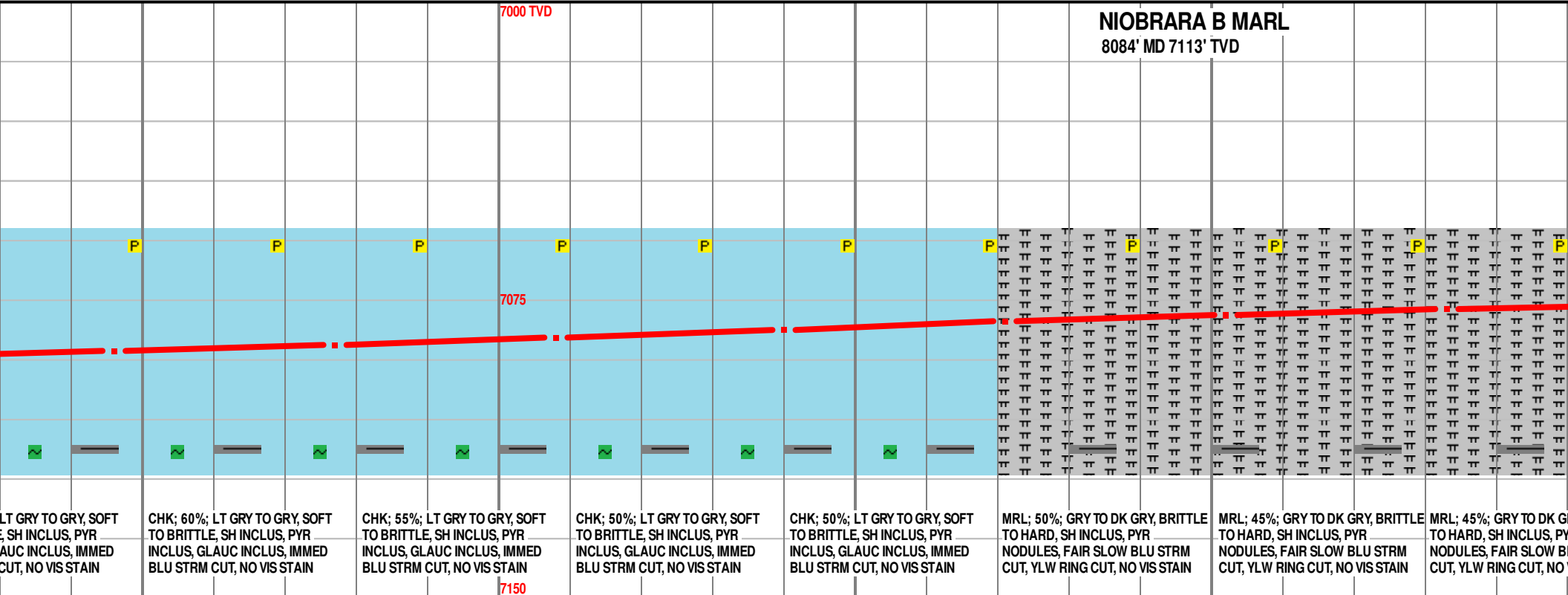
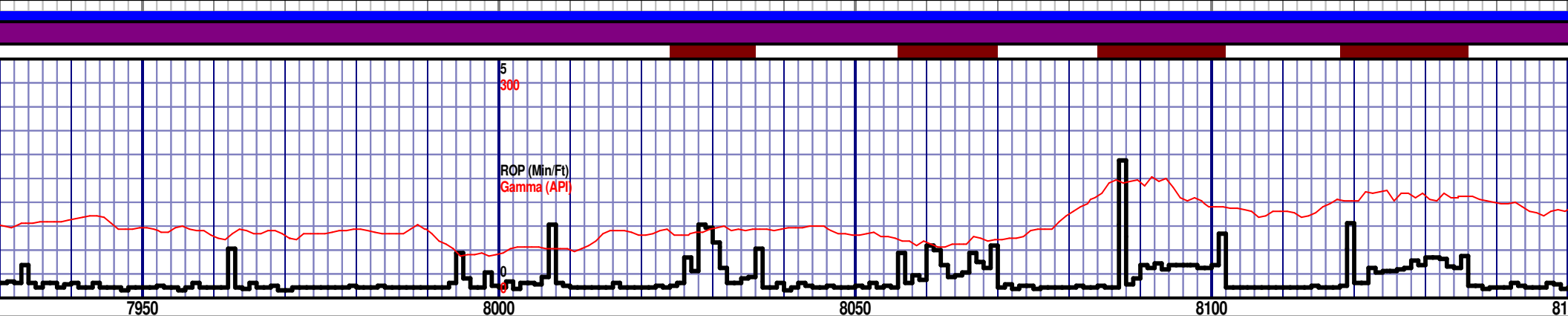
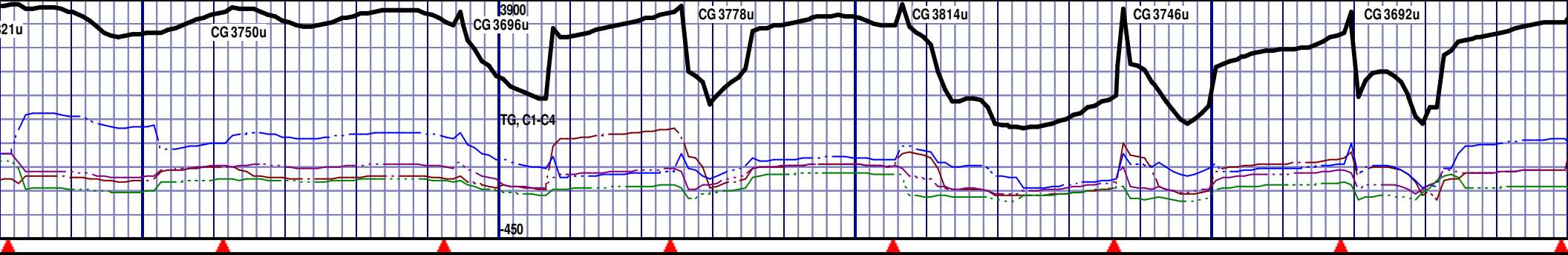


NIOBRARA C CHALK

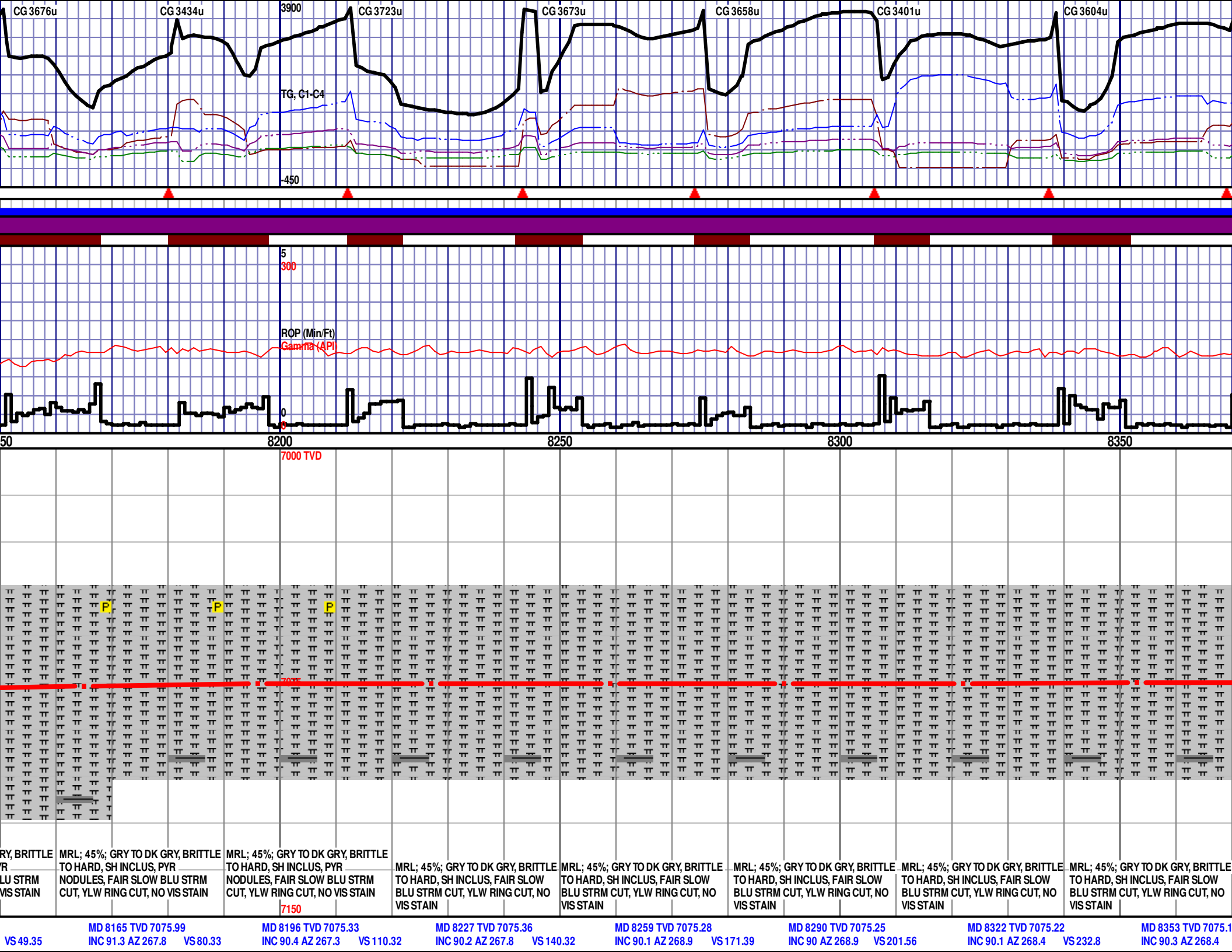
7566' MD 7064' TVD

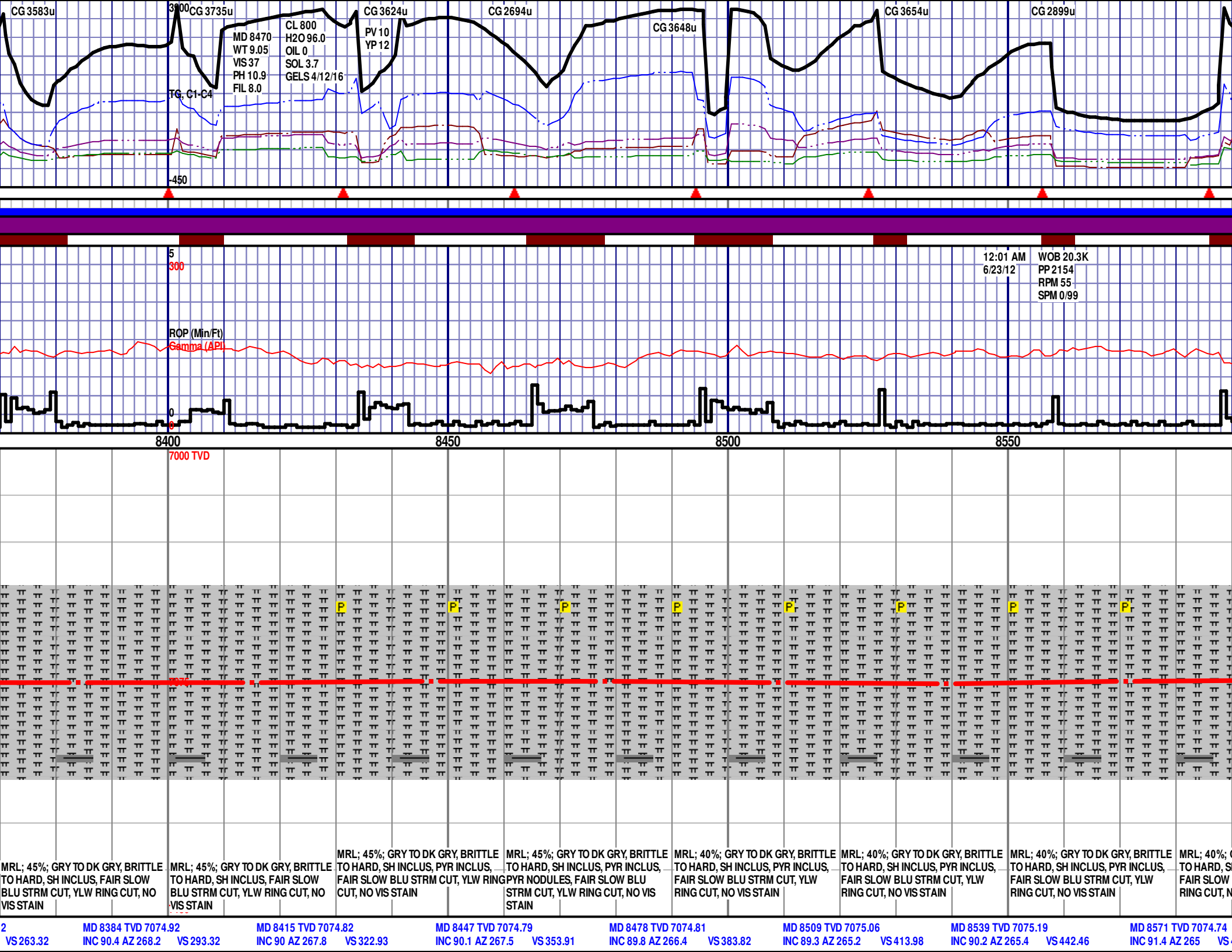
TOOH AT 3:00 AM 6/20/12 @ 7710' MD FOR CASING. TIH @ 5:00 AM ON 6/22/12. RESUMED DRILLING @ 12:00 PM ON 6/22/12 W/BIT # 4 6.125" SECURITY FXD54 SN 11982922 IN @ 7710' MD.

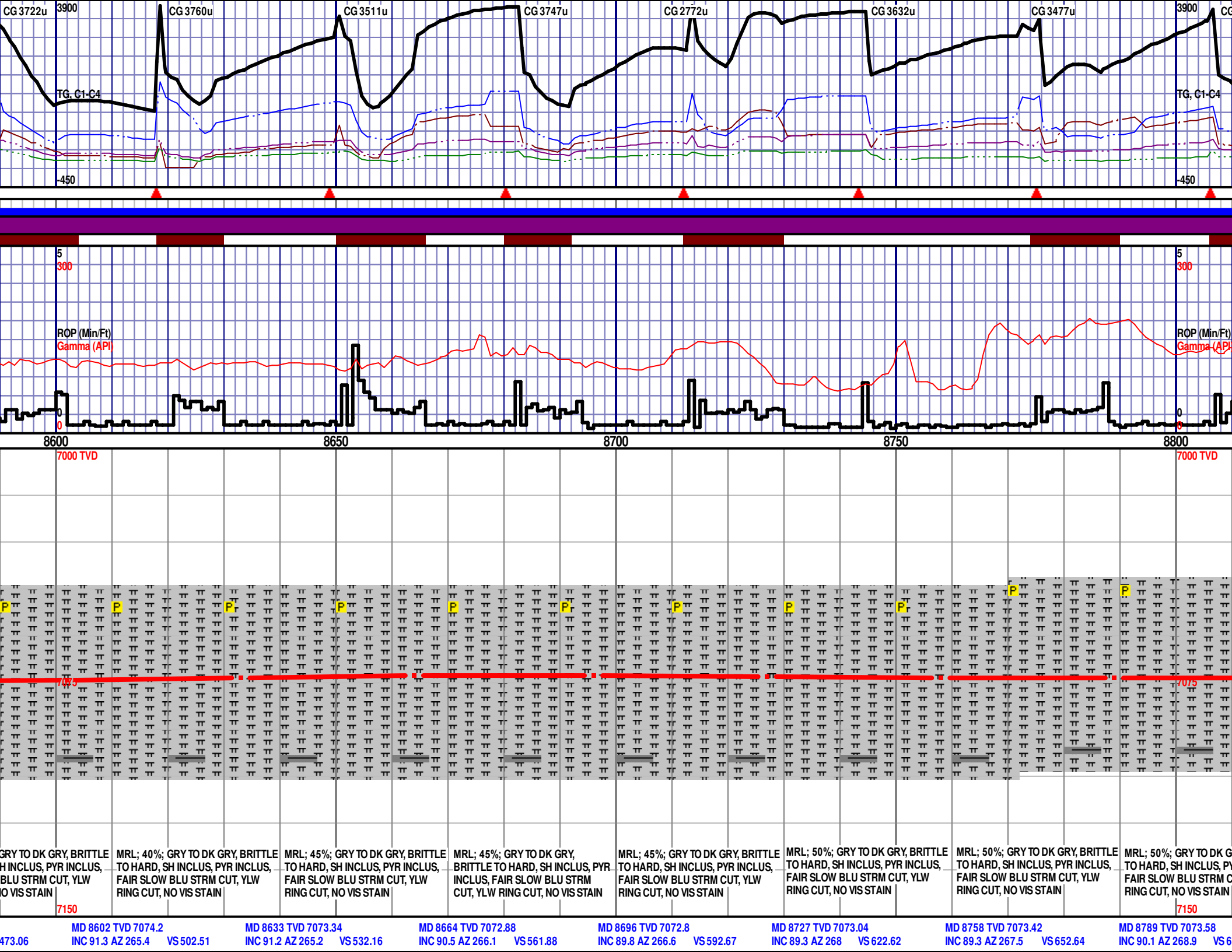
MD 7501 TVD 7048.14 INC 71.7 AZ 269.6 VS-562.18	MD 7532 TVD 7057.43 INC 74.6 AZ 270.5 VS-533.2	MD 7563 TVD 7064.8 INC 77.9 AZ 271 VS-503.67	MD 7594 TVD 7070.95 INC 79.2 AZ 270.8 VS-473.9	MD 7625 TVD 7076.79 INC 79.1 AZ 270.8 VS-444.17	MD 7661 TVD 7082.69 INC 82 AZ 270.5 VS-409.26
CHK; 50%; LT GRY TO GRY, SOFT TO BRITTLE, SH INCLUS, PYR INCLUS, GLAUC INCLUS, IMMED BLU STRM CUT, NO VIS STAIN	CHK; 50%; LT GRY TO GRY, SOFT TO BRITTLE, SH INCLUS, PYR INCLUS, GLAUC INCLUS, IMMED BLU STRM CUT, NO VIS STAIN	CHK; 55%; LT GRY TO GRY, SOFT TO BRITTLE, SH INCLUS, PYR INCLUS, GLAUC INCLUS, IMMED BLU STRM CUT, NO VIS STAIN	CHK; 55%; LT GRY TO GRY, SOFT TO BRITTLE, SH INCLUS, PYR INCLUS, GLAUC INCLUS, IMMED BLU STRM CUT, NO VIS STAIN	CHK; 55%; LT GRY TO GRY, SOFT TO BRITTLE, SH INCLUS, PYR INCLUS, GLAUC INCLUS, IMMED BLU STRM CUT, NO VIS STAIN	CHK; 55%; LT GRY TO GRY, SOFT TO BRITTLE, SH INCLUS, PYR INCLUS, GLAUC INCLUS, IMMED BLU STRM CUT, NO VIS STAIN

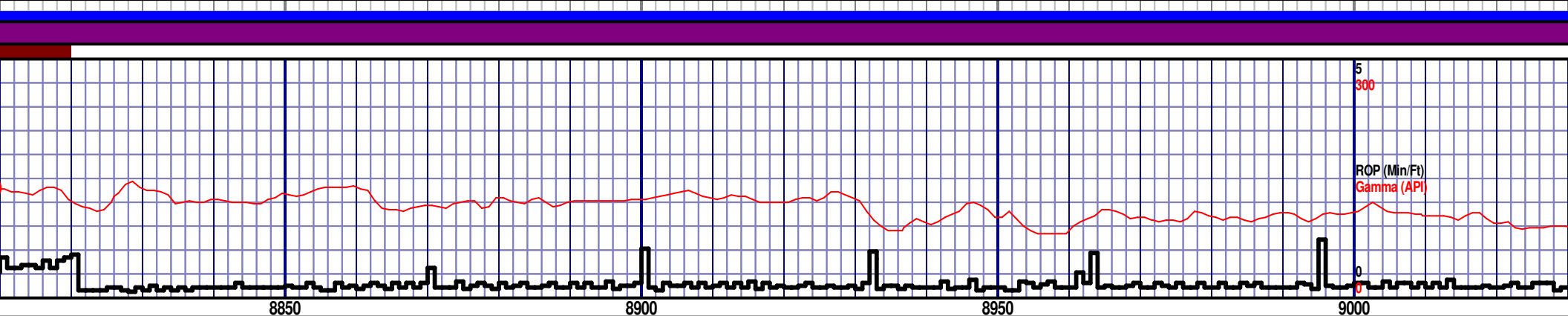
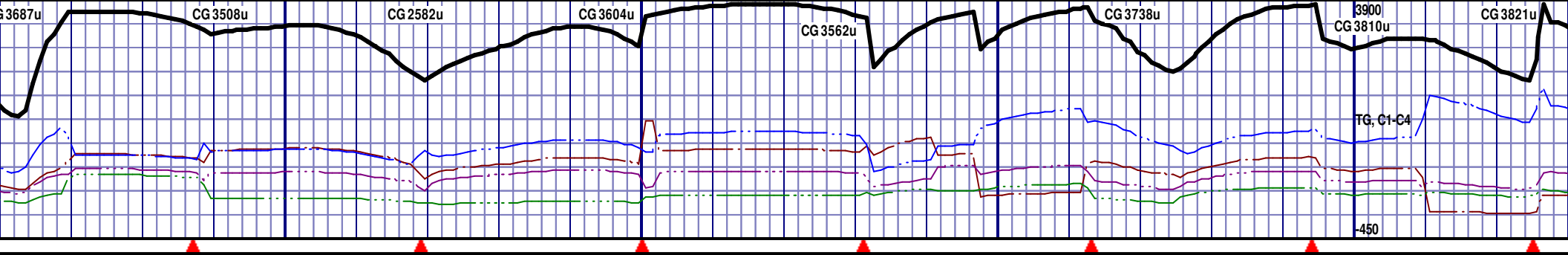


MD 7908 TVD 7908.0 VS-163.35	MD 7946 TVD 7087.9 INC 92.4 AZ 269.4 VS-132.20	MD 7977 TVD 7086.42 INC 93.1 AZ 269.6 VS-101.99	MD 8008 TVD 7084.53 INC 93.9 AZ 269.1 VS-71.82	MD 8040 TVD 7082.32 INC 94 AZ 268.5 VS-40.76	MD 8071 TVD 7080.32 INC 93.4 AZ 268.9 VS-10.68	MD 8102 TVD 7078.62 INC 92.9 AZ 267.7 VS19.37	MD 8133 TVD 7077.1 INC 92.7 AZ 267.8
---------------------------------	---	--	---	---	---	--	---

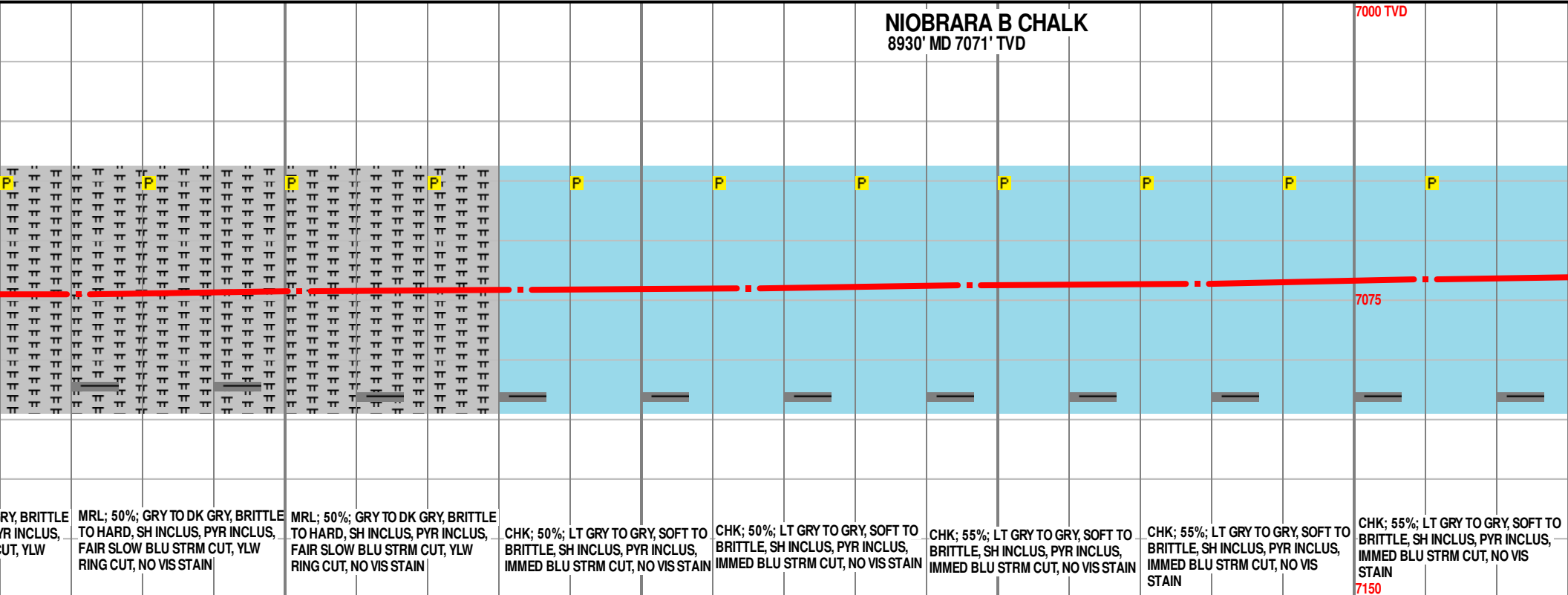






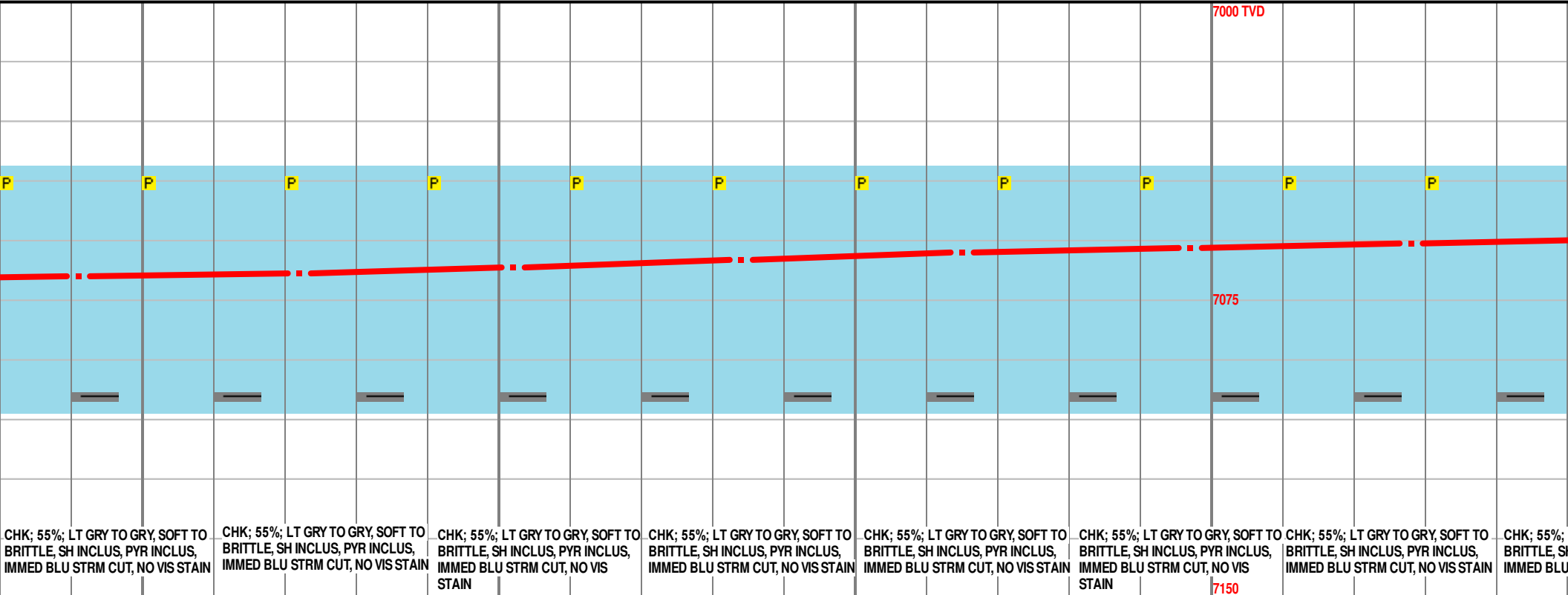
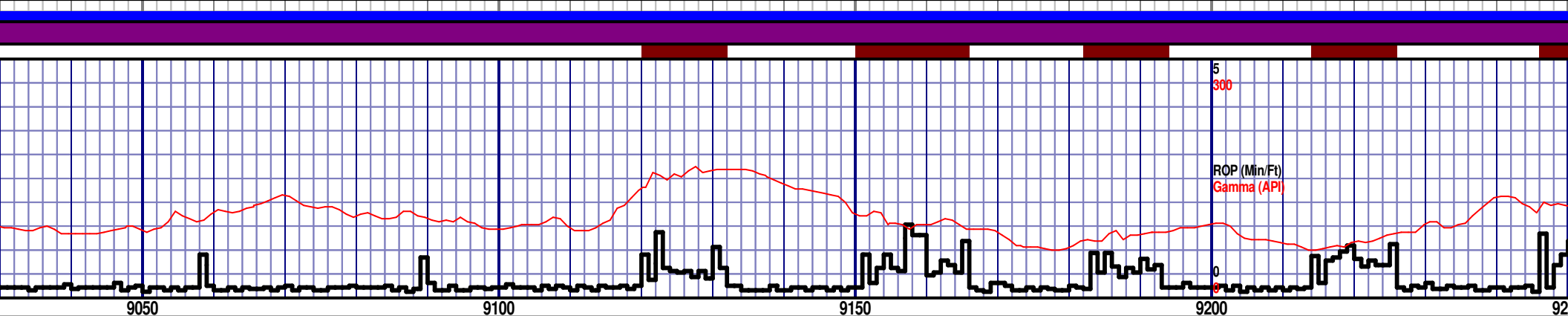
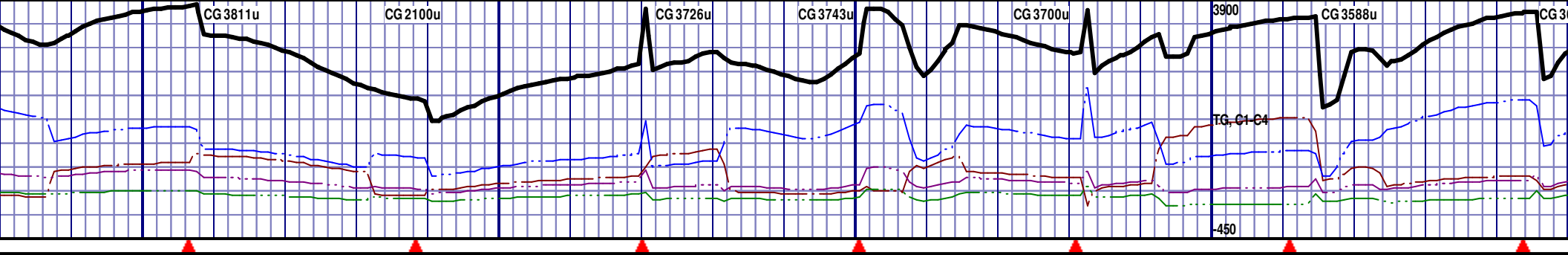


NIOBRARA B CHALK
8930' MD 7071' TVD

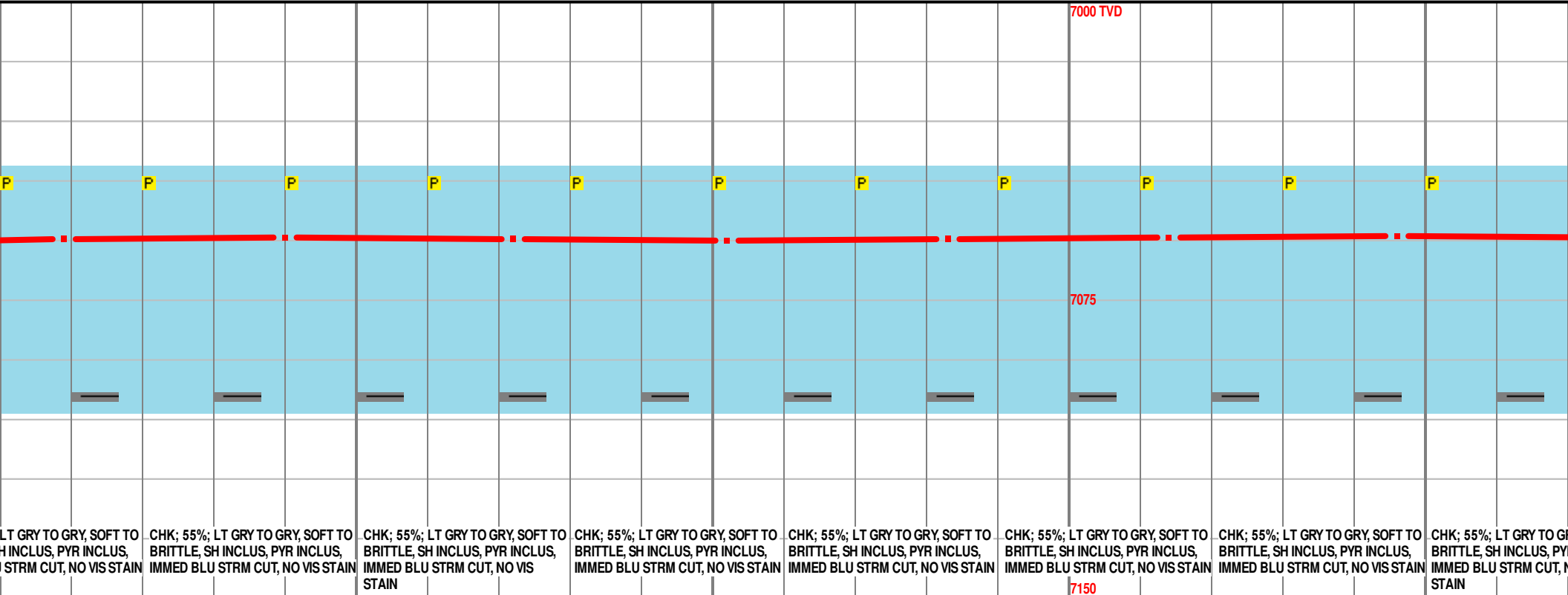
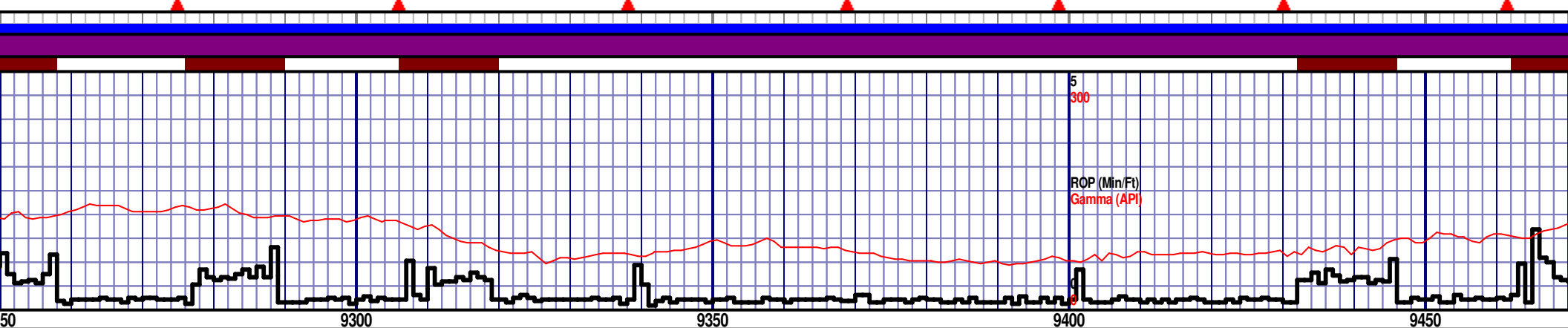
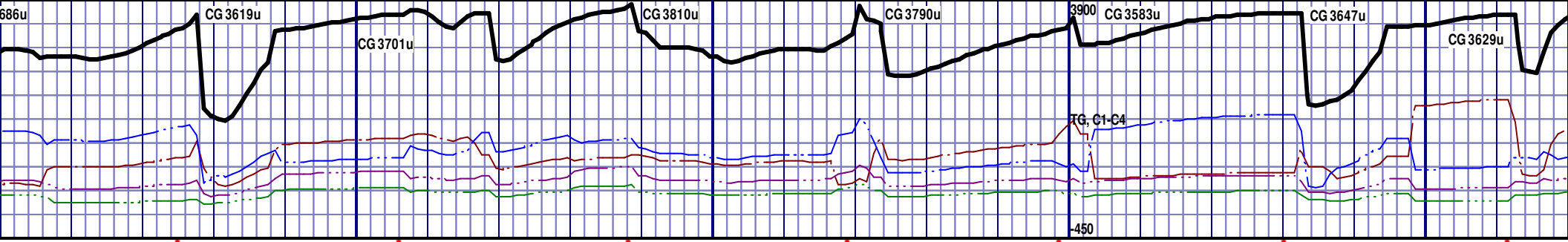


RY, BRITTLE R INCLUS, CUT, YLW	MRL; 50%; GRY TO DK GRY, BRITTLE TO HARD, SH INCLUS, PYR INCLUS, FAIR SLOW BLU STRM CUT, YLW RING CUT, NO VIS STAIN	MRL; 50%; GRY TO DK GRY, BRITTLE TO HARD, SH INCLUS, PYR INCLUS, FAIR SLOW BLU STRM CUT, YLW RING CUT, NO VIS STAIN	CHK; 50%; LT GRY TO GRY, SOFT TO BRITTLE, SH INCLUS, PYR INCLUS, IMMED BLU STRM CUT, NO VIS STAIN	CHK; 50%; LT GRY TO GRY, SOFT TO BRITTLE, SH INCLUS, PYR INCLUS, IMMED BLU STRM CUT, NO VIS STAIN	CHK; 55%; LT GRY TO GRY, SOFT TO BRITTLE, SH INCLUS, PYR INCLUS, IMMED BLU STRM CUT, NO VIS STAIN	CHK; 55%; LT GRY TO GRY, SOFT TO BRITTLE, SH INCLUS, PYR INCLUS, IMMED BLU STRM CUT, NO VIS STAIN	CHK; 55%; LT GRY TO GRY, SOFT TO BRITTLE, SH INCLUS, PYR INCLUS, IMMED BLU STRM CUT, NO VIS STAIN	CHK; 55%; LT GRY TO GRY, SOFT TO BRITTLE, SH INCLUS, PYR INCLUS, IMMED BLU STRM CUT, NO VIS STAIN
--------------------------------------	--	--	---	---	---	--	--	--

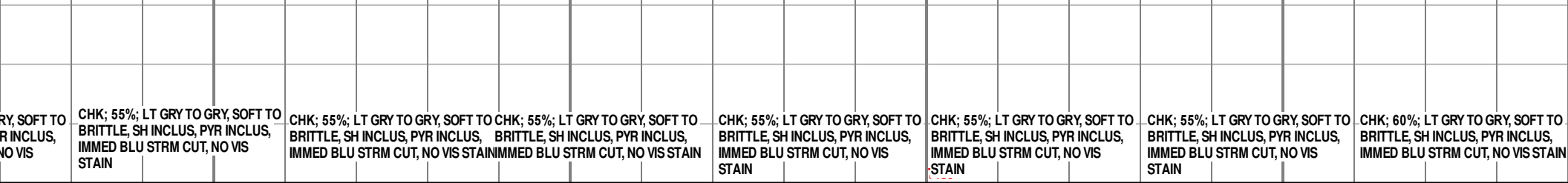
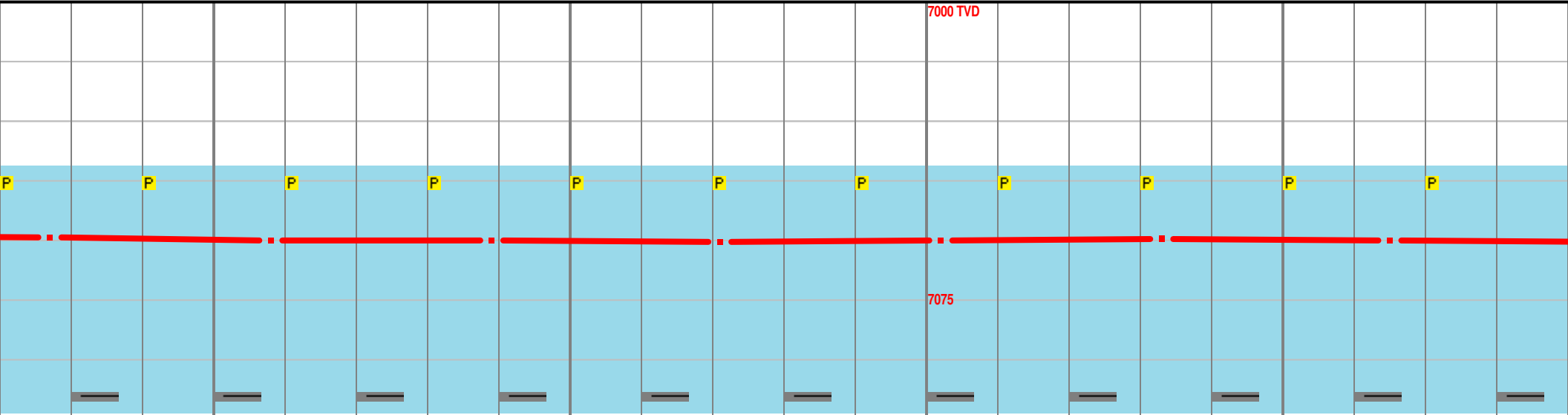
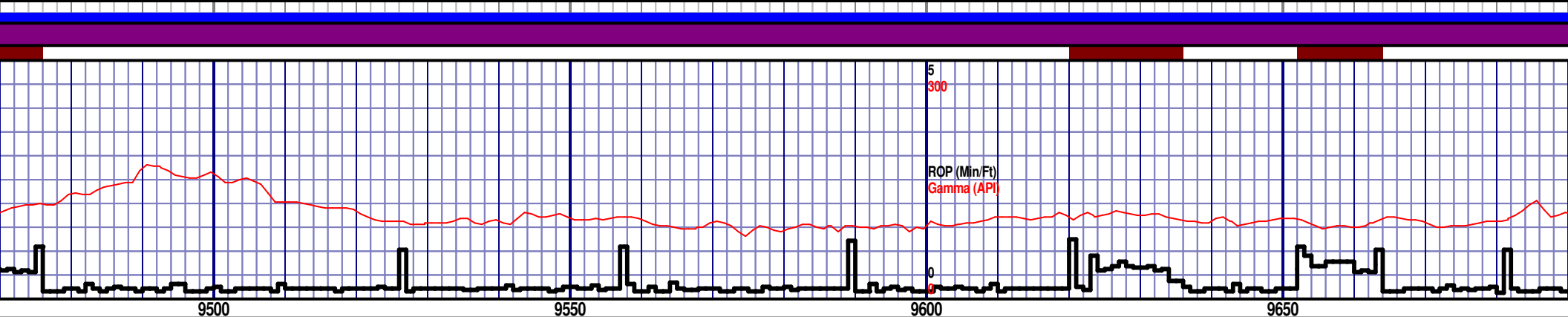
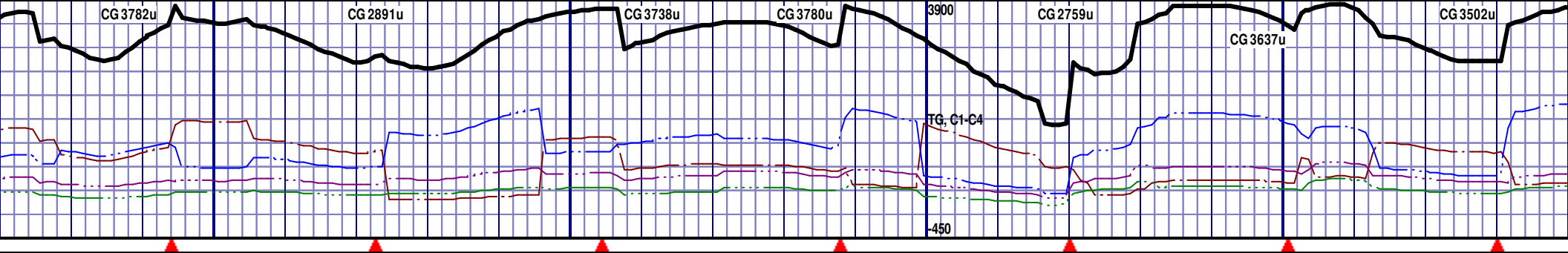
MD 8821 TVD 7073.33 INC 90.8 AZ 269.8 VS 713.92	MD 8852 TVD 7072.81 INC 91.1 AZ 269.8 VS 744.20	MD 8883 TVD 7072.36 INC 90.6 AZ 269.1 VS 774.43	MD 8915 TVD 7071.96 INC 90.8 AZ 268.7 VS 805.57	MD 8946 TVD 7071.42 INC 91.2 AZ 268.2 VS 835.68	MD 8978 TVD 7070.7 INC 91.4 AZ 268 VS 866.71	MD 9010 TVD 7069.92 INC 91.4 AZ 268 VS 897.71
--	--	--	--	--	---	--



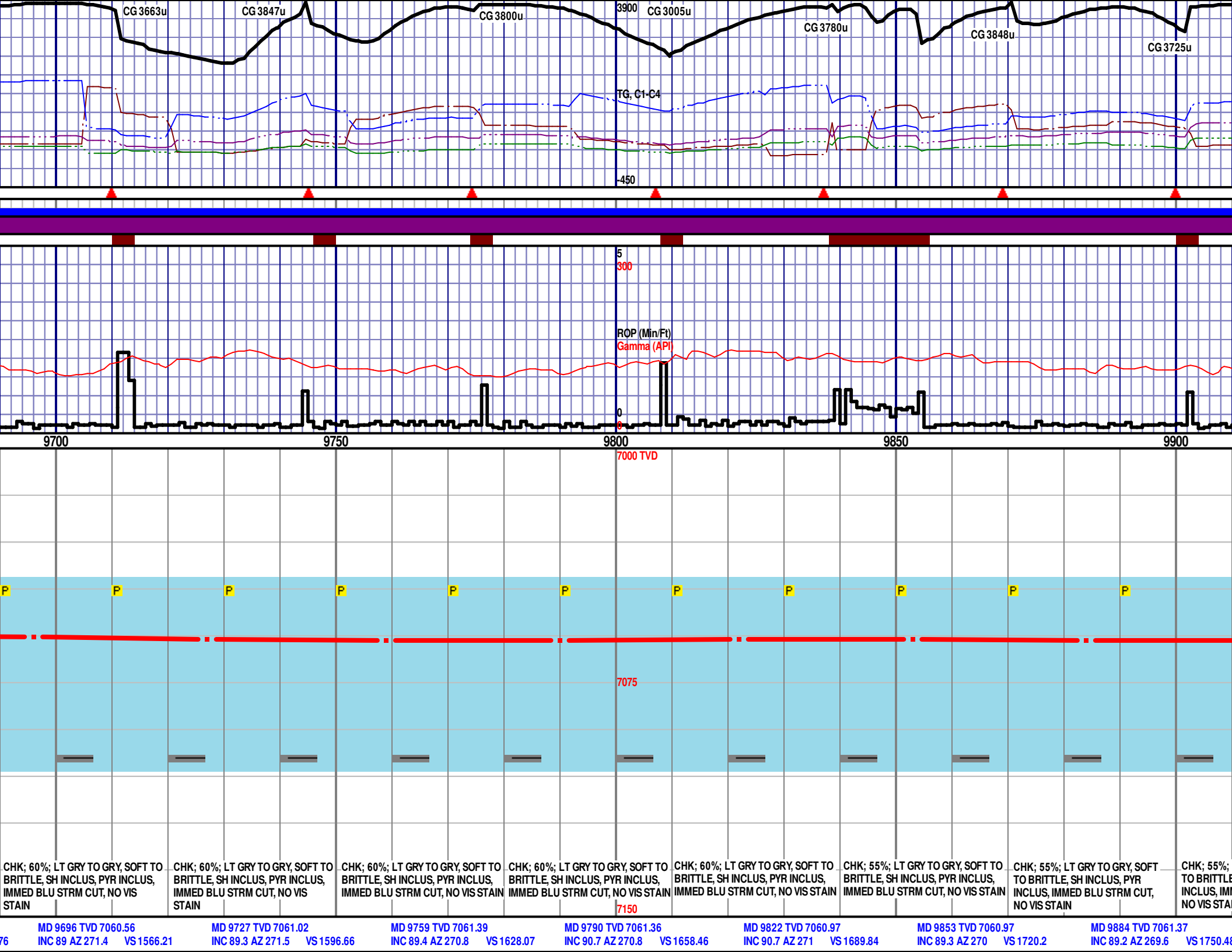
MD 9041 TVD 7069.13 INC 91.5 AZ 268.4 VS 927.80	MD 9072 TVD 7068.08 INC 92.4 AZ 268.2 VS 957.88	MD 9102 TVD 7066.61 INC 93.2 AZ 267.8 VS 986.93	MD 9134 TVD 7064.8 INC 93.3 AZ 267.1 VS 1017.83	MD 9165 TVD 7063.17 INC 92.7 AZ 267.7 VS 1047.76	MD 9197 TVD 7061.81 INC 92.2 AZ 269.1 VS 1078.81	MD 9228 TVD 7060.62 INC 92.2 AZ 269.8 VS 1108.81
--	--	--	--	---	---	---

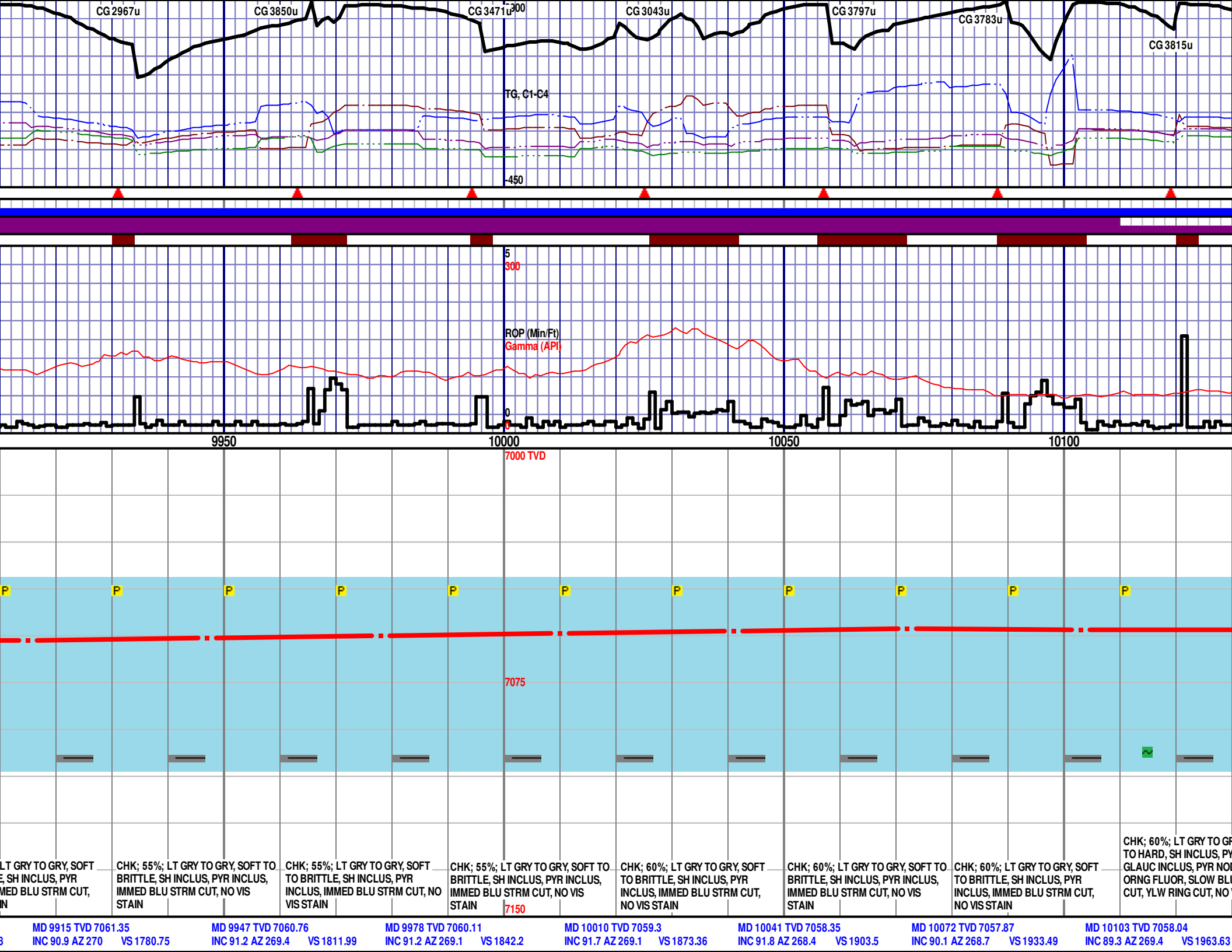


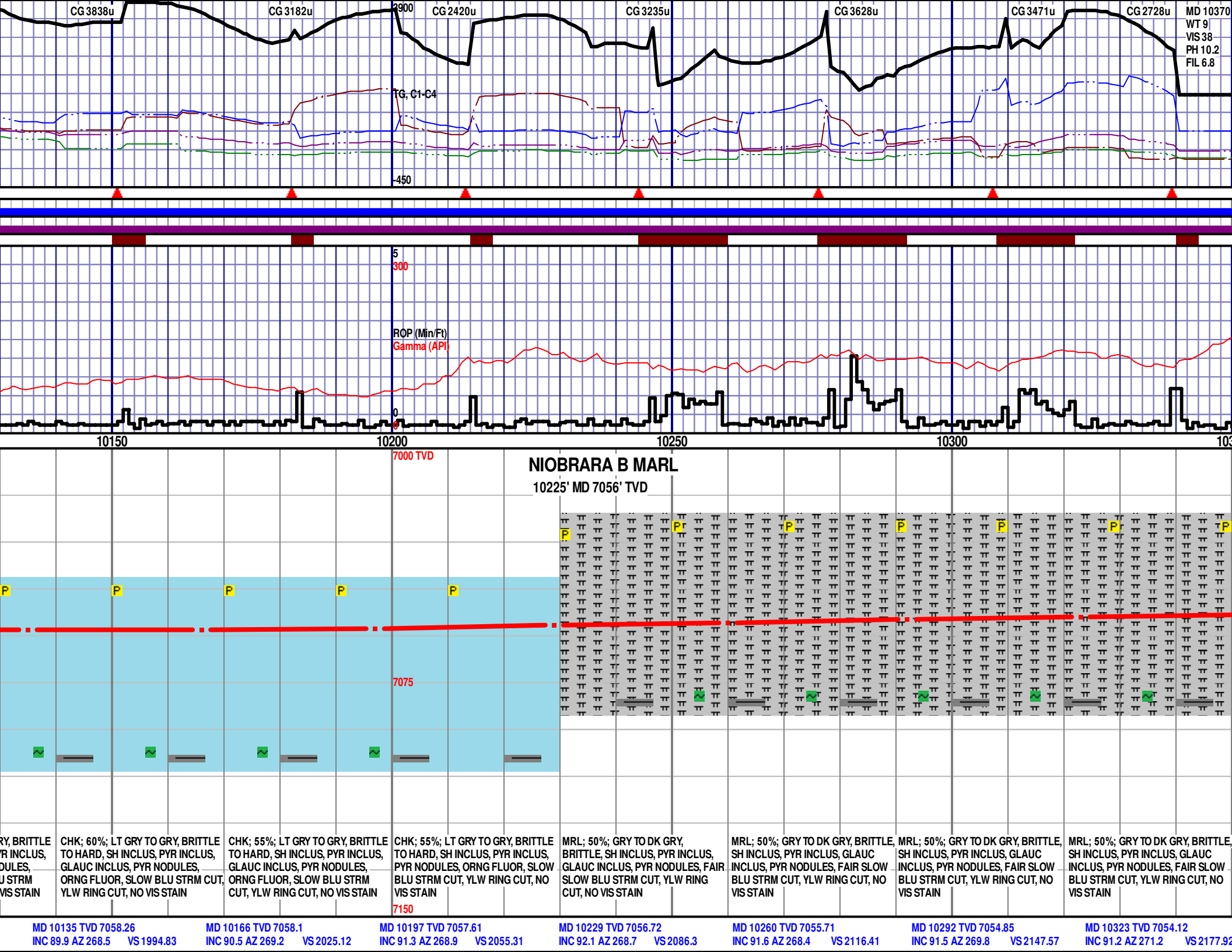
MD 9259 TVD 7059.7 INC 91.2 AZ 269.6 VS 1139.03	MD 9290 TVD 7059.37 INC 90 AZ 268.9 VS 1169.49	MD 9322 TVD 7059.57 INC 89.3 AZ 269.1 VS 1200.65	MD 9352 TVD 7059.85 INC 89.6 AZ 269.2 VS 1229.87	MD 9383 TVD 7059.66 INC 90.2 AZ 269.2 VS 1260.14	MD 9414 TVD 7059.31 INC 91.1 AZ 268.9 VS 1290.32	MD 9446 TVD 7059 INC 90 AZ 269.4 VS 1321.10
--	---	---	---	---	---	--

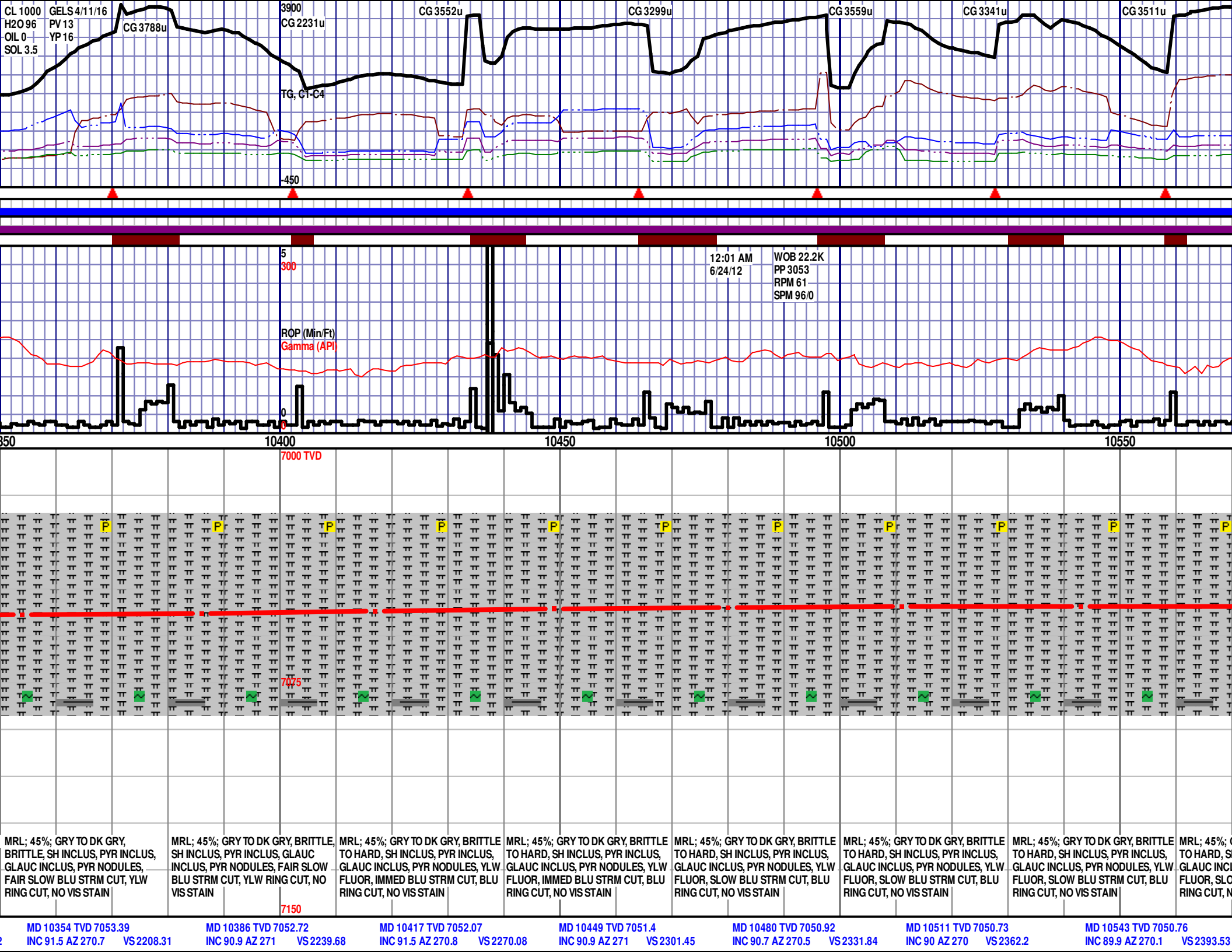


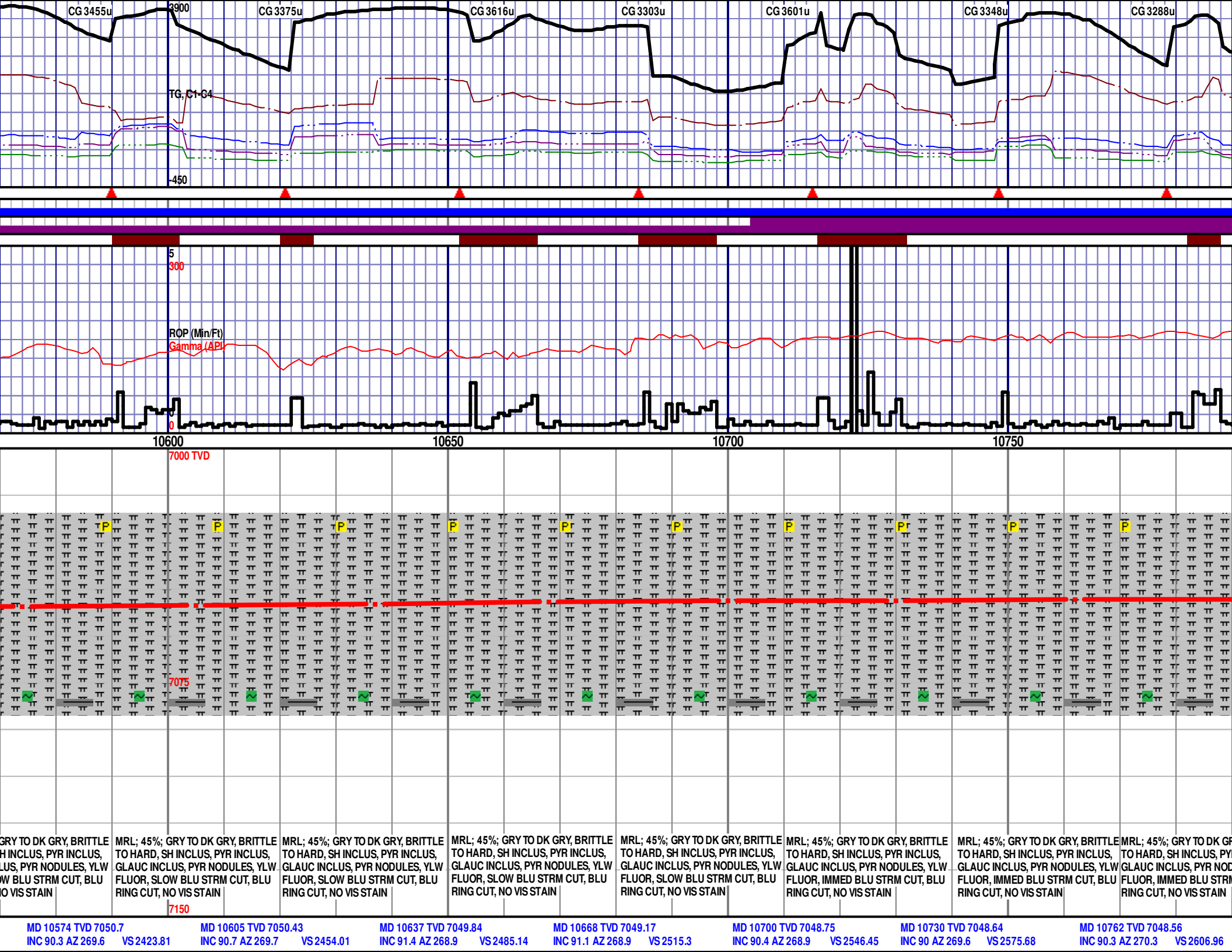
MD 9477 TVD 7059.32 INC 88.8 AZ 270.3 VS 1351.78	MD 9508 TVD 7059.91 INC 89 AZ 270.1 VS 1382.10	MD 9539 TVD 7060.17 INC 89.6 AZ 270 VS 1412.46	MD 9571 TVD 7060.26 INC 90.1 AZ 270.1 VS 1443.74	MD 9602 TVD 7059.99 INC 90 AZ 269.8 VS 1474.04	MD 9633 TVD 7059.69 INC 90.2 AZ 270.7 VS 1504.37	MD 9665 TVD 7059.97 INC 88.8 AZ 271.4 VS 1535.74
---	---	---	---	---	---	---

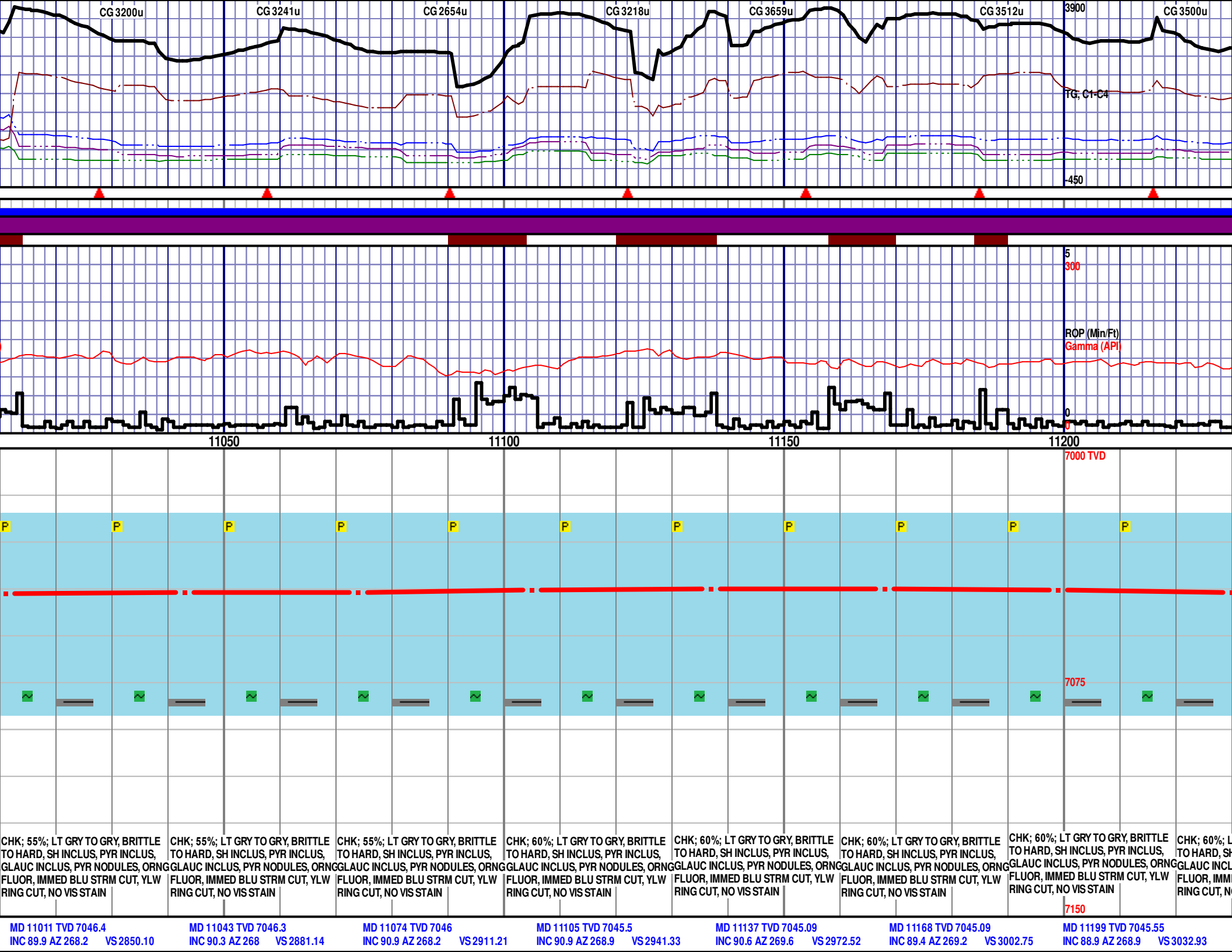


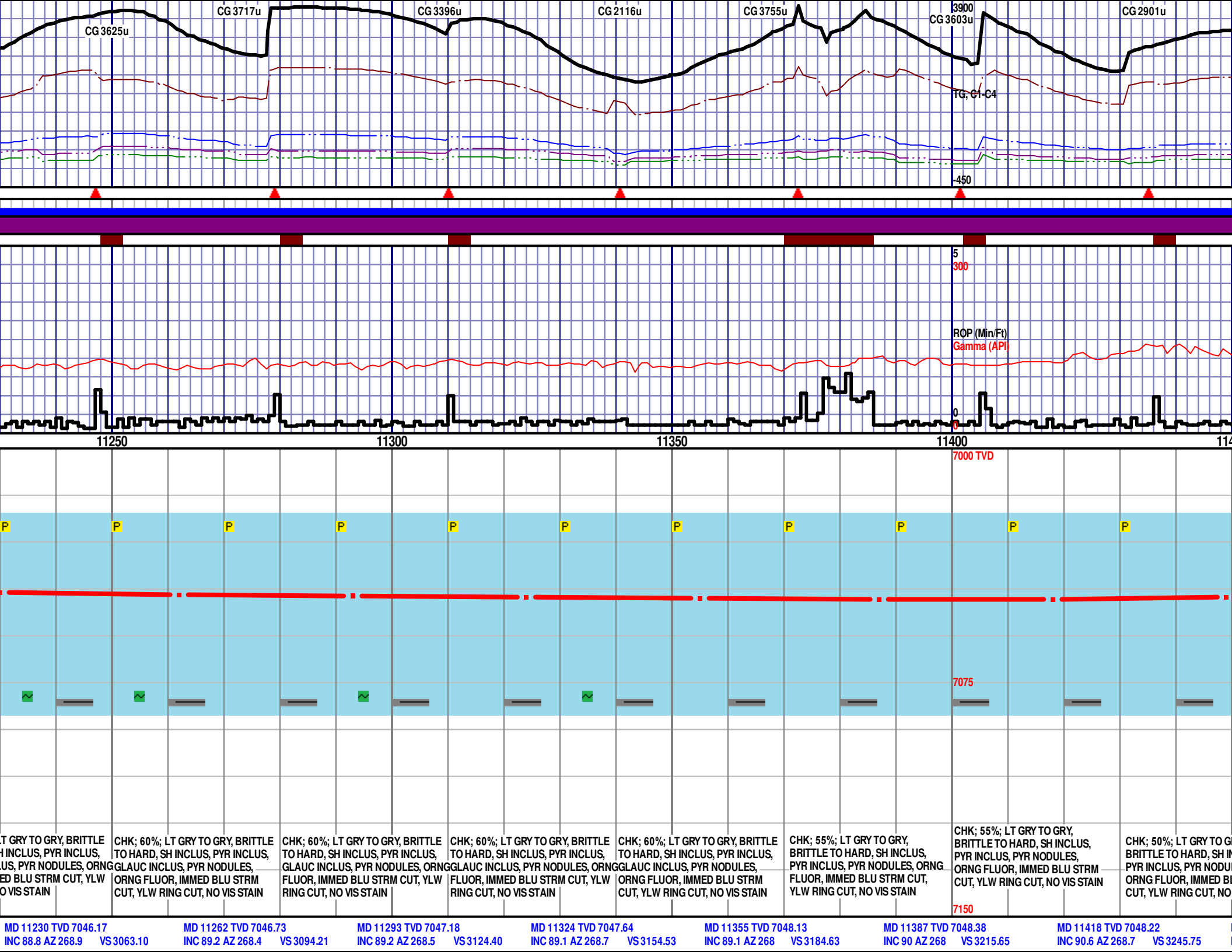












CG 3625u

CG 3717u

CG 3396u

CG 2116u

CG 3755u

CG 3603u

CG 2901u

TG, C1-C4

-450

ROP (Min/Ft)
Gamma (API)

7000 TVD

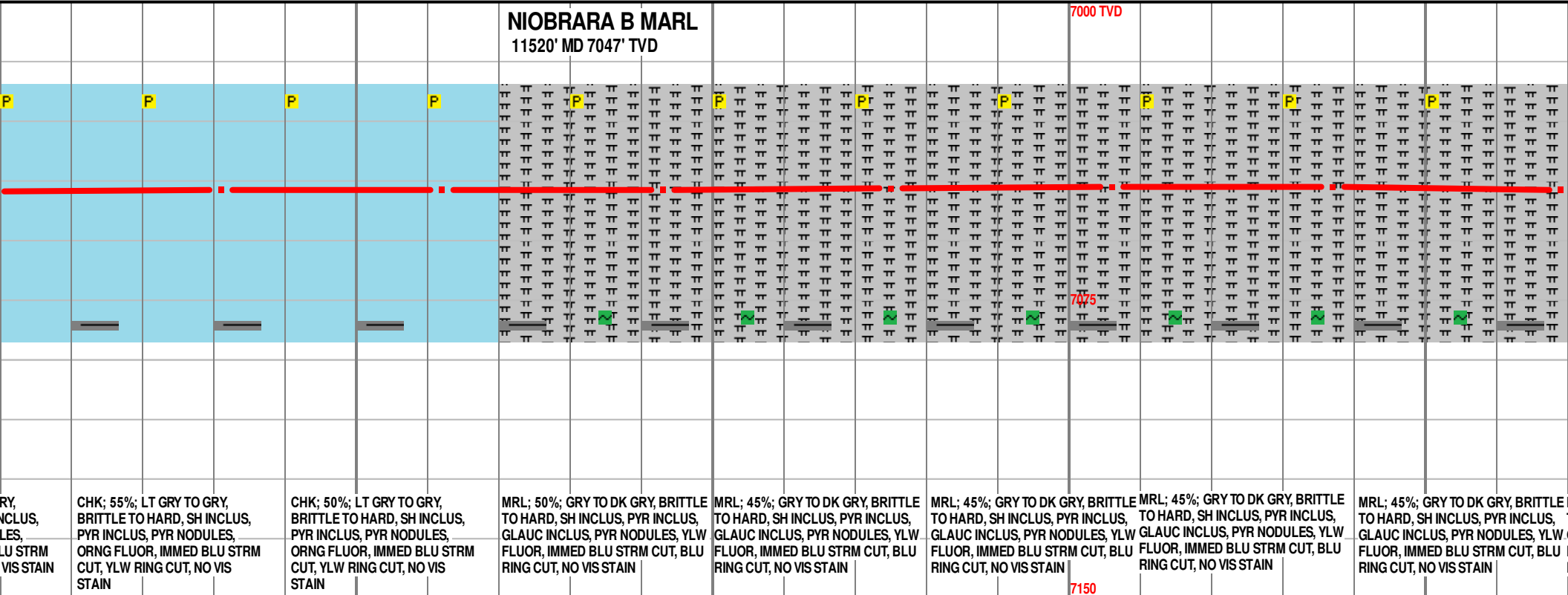
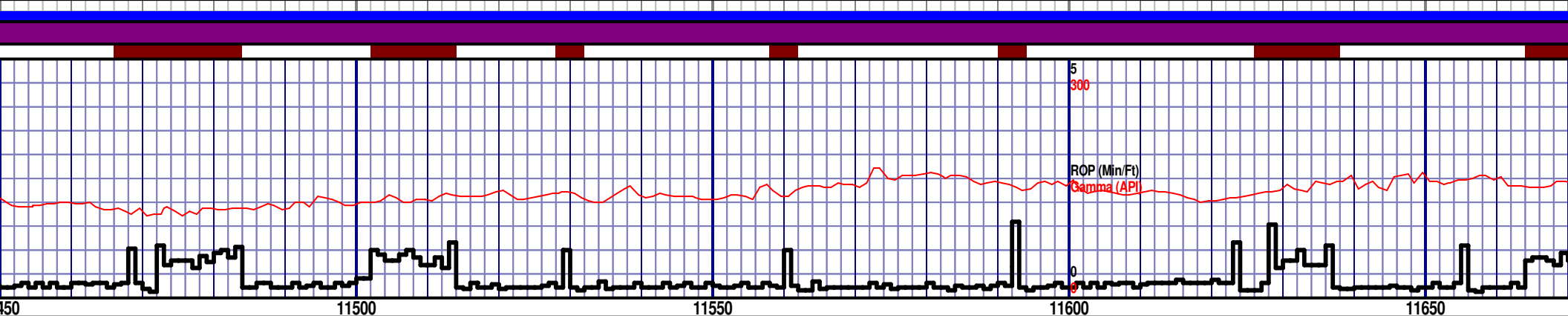
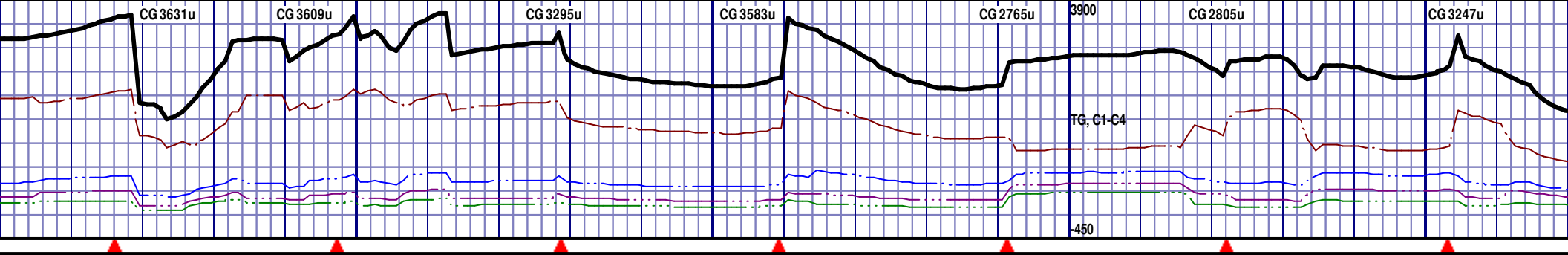
7075

7150

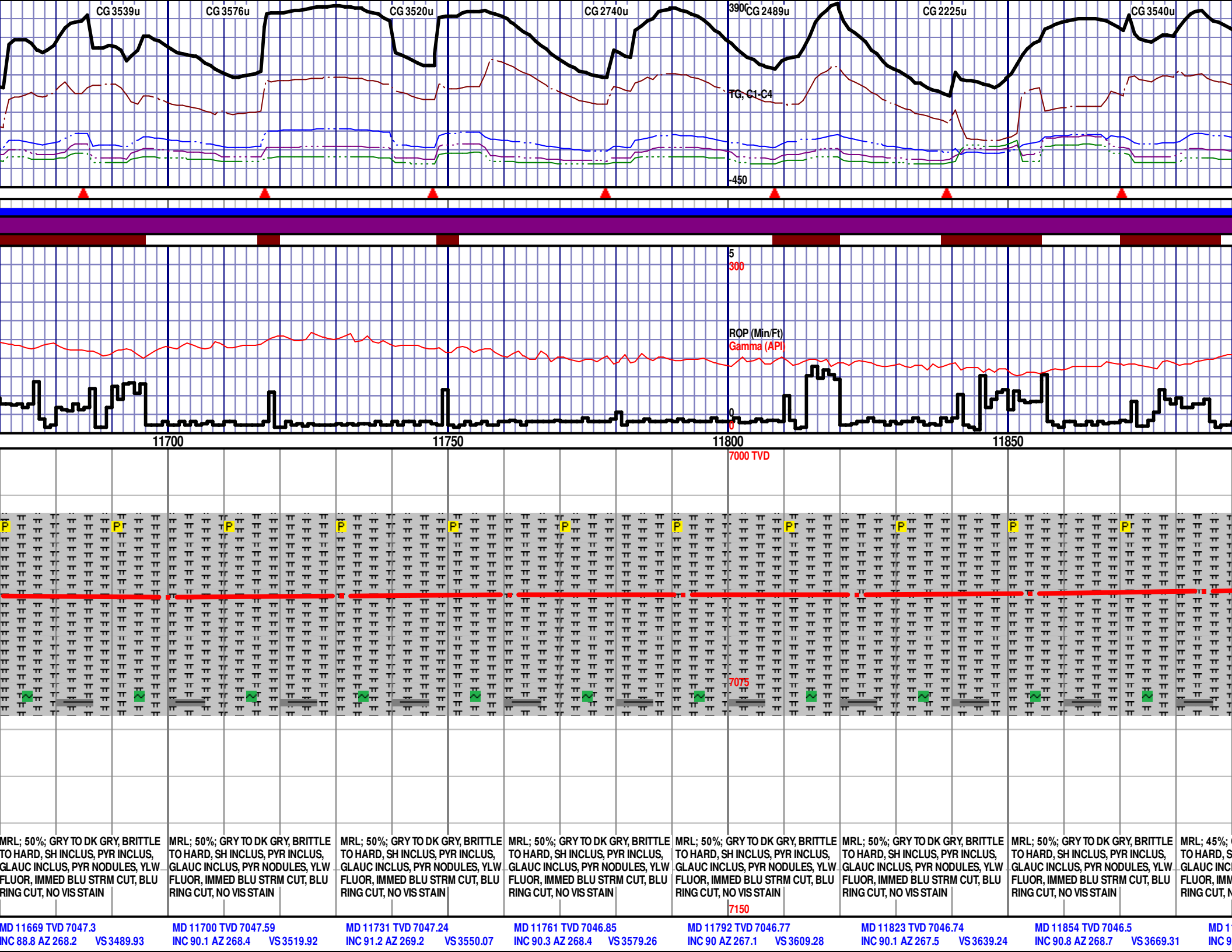
P

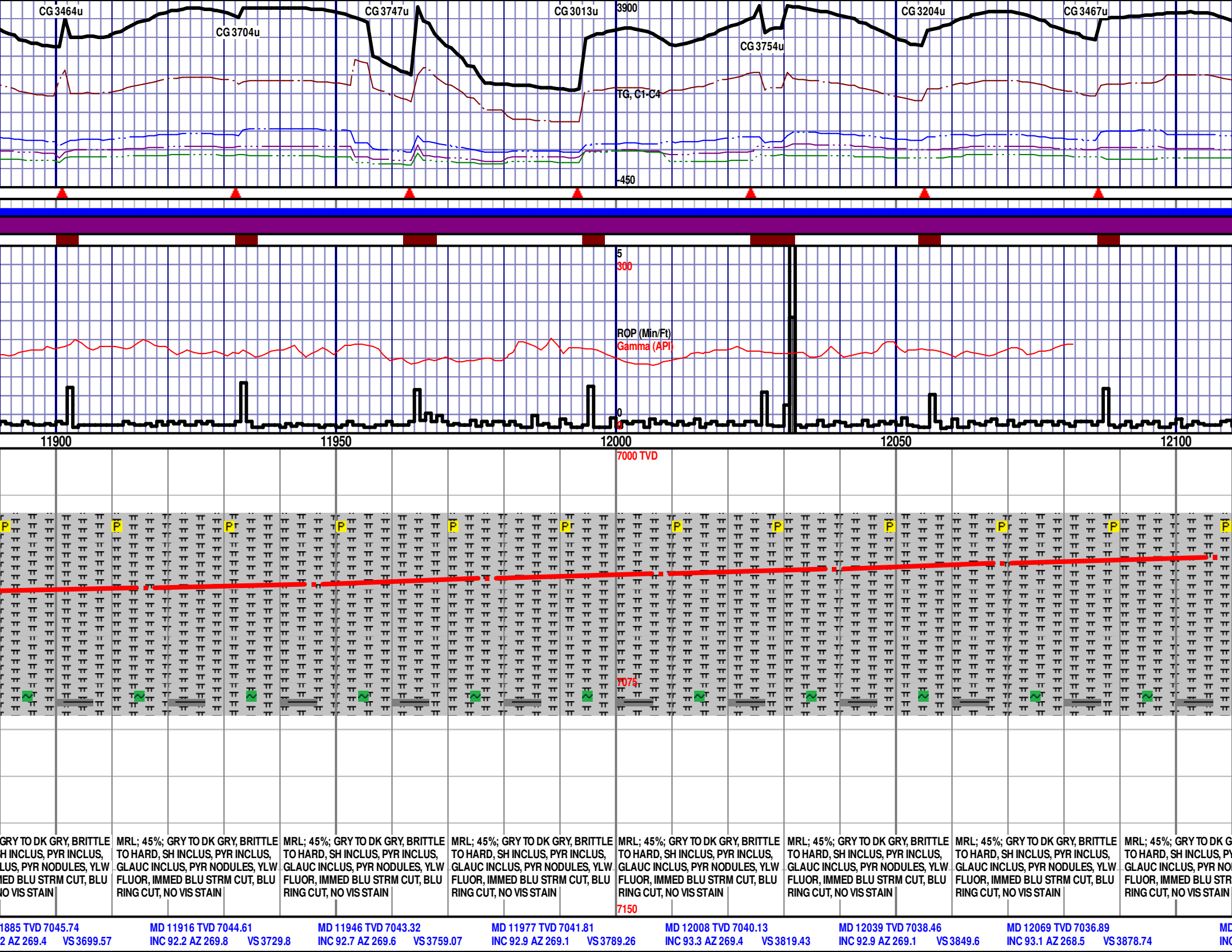
CHK; 60%; LT GRY TO GRY, BRITTL TO HARD, SH INCLUS, PYR INCLUS, GLAUC INCLUS, PYR NODULES, ORNG FLUOR, IMMED BLU STRM CUT, YLW RING CUT, NO VIS STAIN

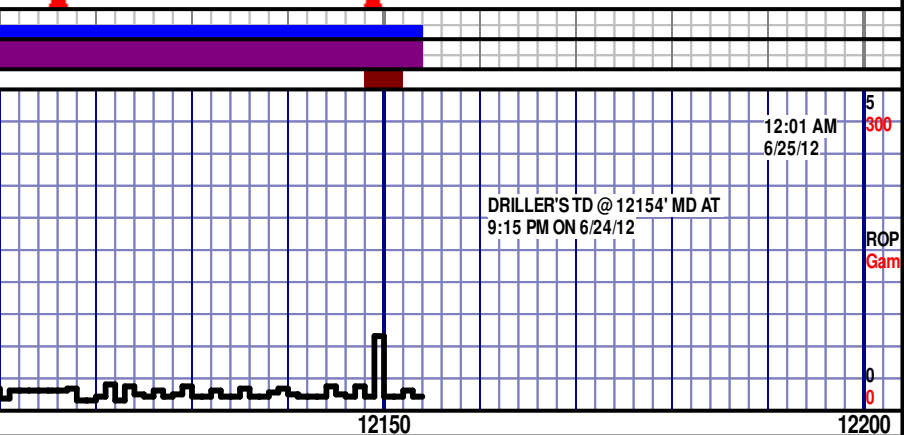
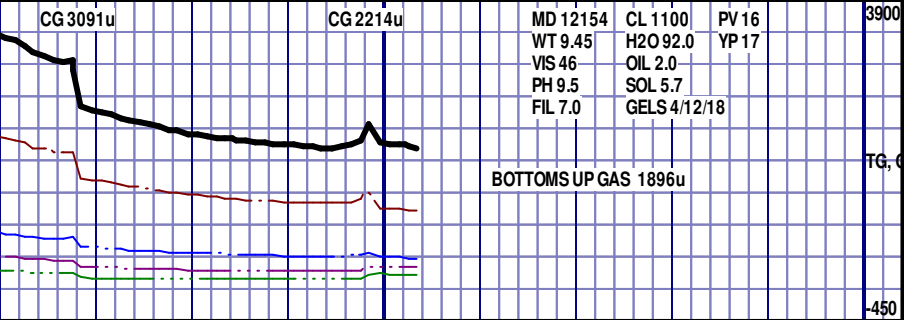
MD 11230 TVD 7046.17
INC 88.8 AZ 268.9 VS 3063.10



MD 11449 TVD 7047.73 INC 91.2 AZ 268.5 VS 3275.88	MD 11481 TVD 7047.2 INC 90.7 AZ 268 VS 3306.94	MD 11512 TVD 7047.09 INC 89.7 AZ 269.1 VS 3336.98	MD 11543 TVD 7047.2 INC 89.9 AZ 269.2 VS 3367.18	MD 11575 TVD 7046.9 INC 91.2 AZ 269.6 VS 3398.39	MD 11606 TVD 7046.38 INC 90.7 AZ 269.6 VS 3428.64	MD 11637 TVD 7046.57 INC 88.6 AZ 268 VS 3458.79
--	---	--	---	---	--	--







TD @ 12154' MD	7000
RELEASED 6/25/12	7075
THANK YOU FROM RYAN BLEESS, CORY SHORETTE AND HORIZON WELL LOGGING, LLC	7150
RY, BRITTLE R INCLUS, DULES, YLW M CUT, BLU	
MRL; 45%; GRY TO DK GRY, BRITTLE TO HARD, SH INCLUS, PYR INCLUS, GLAUC INCLUS, PYR NODULES, YLW FLUOR, IMMED BLU STRM CUT, BLU RING CUT, NO VIS STAIN	