



Corporate Office

1775 Sherman Street, #3000
Denver, Colorado 80203
303.860.5800
www.pdce.com

June 21, 2013

State of Colorado, Oil & Gas Conservation Commission
Attn: Matt Lepore
1120 Lincoln Street, Suite 801
Denver, CO 80203

Re: **Letter to the Director, Rule 318A.e.**
Wiedeman 29K-443
NWSW, Section 29 T4N R66W
Weld County, Colorado

Dear Director:

PDC Energy ("PDC") hereby certifies to the Director that PDC holds all minerals in the proposed 320 acre wellbore spacing unit consisting of the SW of Section 29 and NW of Section 32 in T4N R66W; therefore, no 30-day notice is needed to owners in the proposed wellbore spacing unit. This horizontal well location crosses existing unit boundaries and requires the formation of the proposed unit. PDC hereby requests the Director to approve the well.

If you should have any questions or concerns regarding this permit, please contact the undersigned at (303) 860-5800.

Sincerely,

A handwritten signature in blue ink, appearing to read "Liz Lindow", written over the word "Sincerely,".

Liz Lindow
Regulatory Analyst
PDC Energy, Inc.

WELL LOCATION CERTIFICATE

WIEDEMAN 29K-403

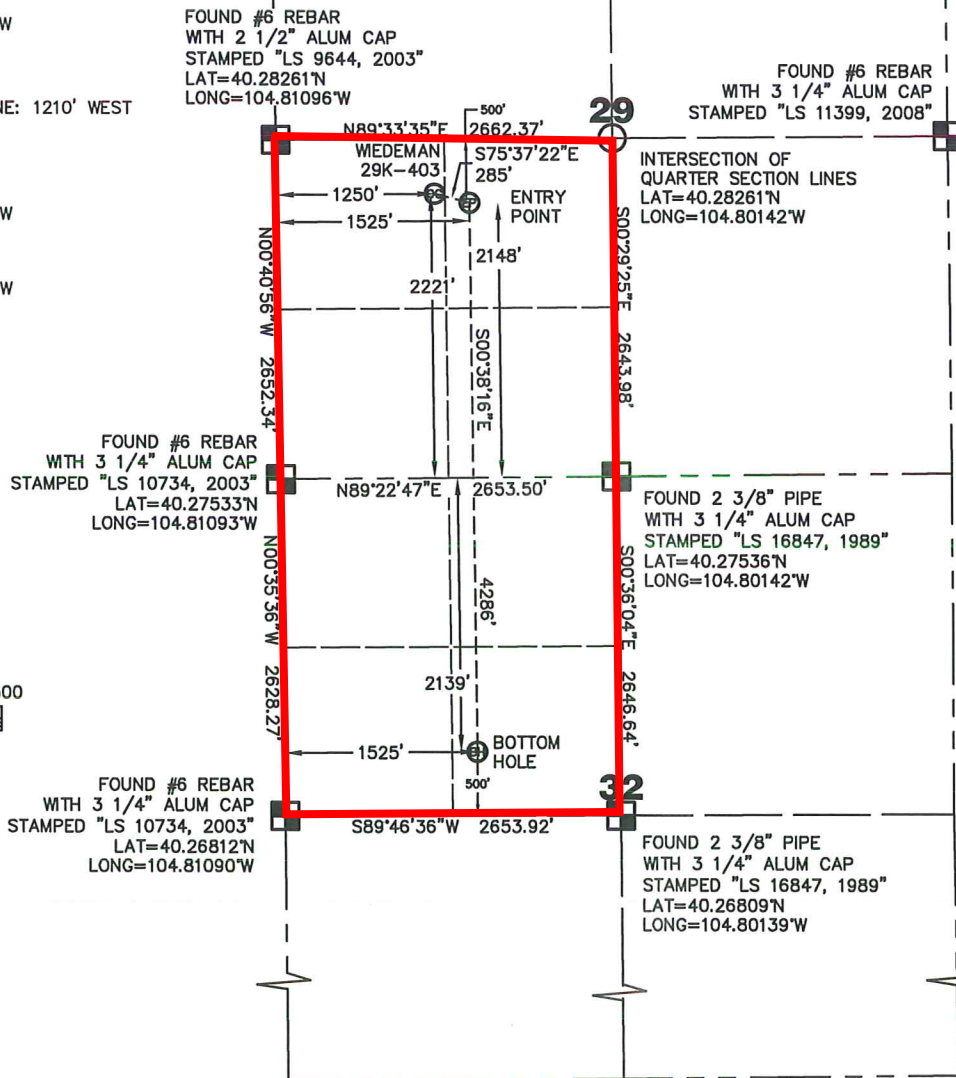
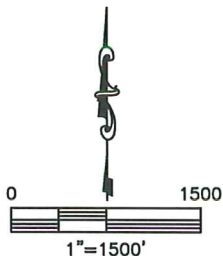
THIS MAP DOES NOT REPRESENT
A BOUNDARY SURVEY

SECTION: 29
TOWNSHIP: 4N
RANGE: 66W

SURFACE LOCATION
LATITUDE: 40.28144°N
LONGITUDE: 104.80648°W
PDOP: 1.6
ELEV: 4762'
1/4, 1/4: NW 1/4 SW 1/4
NEAREST PROPERTY LINE: 1210' WEST

ENTRY POINT
LATITUDE: 40.28124°N
LONGITUDE: 104.80549°W

BOTTOM HOLE
LATITUDE: 40.26948°N
LONGITUDE: 104.80544°W



In accordance with a request from MAC NEUMANN with PDC ENERGY, INC., King Surveyors Inc. has determined the surface location of the WIEDEMAN 29K-403 to be 2221' from the SOUTH line and 1250' from the WEST line and the entry point to be 2148' from the SOUTH line and 1525' from the WEST line, as measured at right angles, from the section lines of Section 29, Township 4 North, Range 66 West of the Sixth Principal Meridian and the bottom hole to be 2139' from the NORTH line and 1525' from the WEST line, as measured at right angles, from the section lines of Section 32, Township 4 North, Range 66 West of the Sixth Principal Meridian, County of Weld, State of Colorado.

I hereby state that this Well Location Certificate was prepared by me, or under my direct supervision, that the fieldwork was completed on 5-13-2013, for and on behalf of PDC ENERGY, INC., that this is not a Land Survey Plat or an Improvement Survey Plat, and that it is not to be relied upon for establishment of fence, building, or other future improvement lines.

NOTES:

- 1) Bearings shown are Grid Bearings of the Colorado State Plane Coordinate System, North Zone, North American Datum 1983/2007. The lineal dimensions as contained herein are based upon the "U.S. Survey Foot."
- 2) Ground elevations are based on an observed GPS elevation (NAVD 1988 DATUM).
- 3) NEAREST EXISTING WELL: WIEDEMAN 29-1, 586' SOUTHEAST
- 4) IMPROVEMENTS: See LOCATION DRAWING for all visible improvements within 500' of the disturbed area.
- 5) SURFACE USE: CROP FIELD & PRODUCTION FACILITY
- 6) FIELD OPERATOR: TOM WINANS

NOTE

According to Colorado law, you must commence any legal action based upon any defect in this W.L.C. within three years after you discover such defect. In no event, may any action based upon any defect in this survey be commenced more than ten years after the date of the certificate shown hereon. (13-80-105 C.R.S.)

- LEGEND**
- = FOUND ALIQUOT MONUMENT AS DESCRIBED
 - = CALCULATED POSITION
 - = SET ALIQUOT MONUMENT AS DESCRIBED



Michael Chad Dilka – On Behalf Of King Surveyors, Inc.
Colorado Licensed Professional Land Surveyor #38106

PROJECT#: 2013264