

AXIA ENERGY

CONSTRUCTION LAYOUT FOR

BULLDOG #17-21H-891, #17-31H-891 & #8-34V-891

SECTION 17, T8N, R91W, 6th. P.M.

NW 1/4 NE 1/4

FIGURE #1

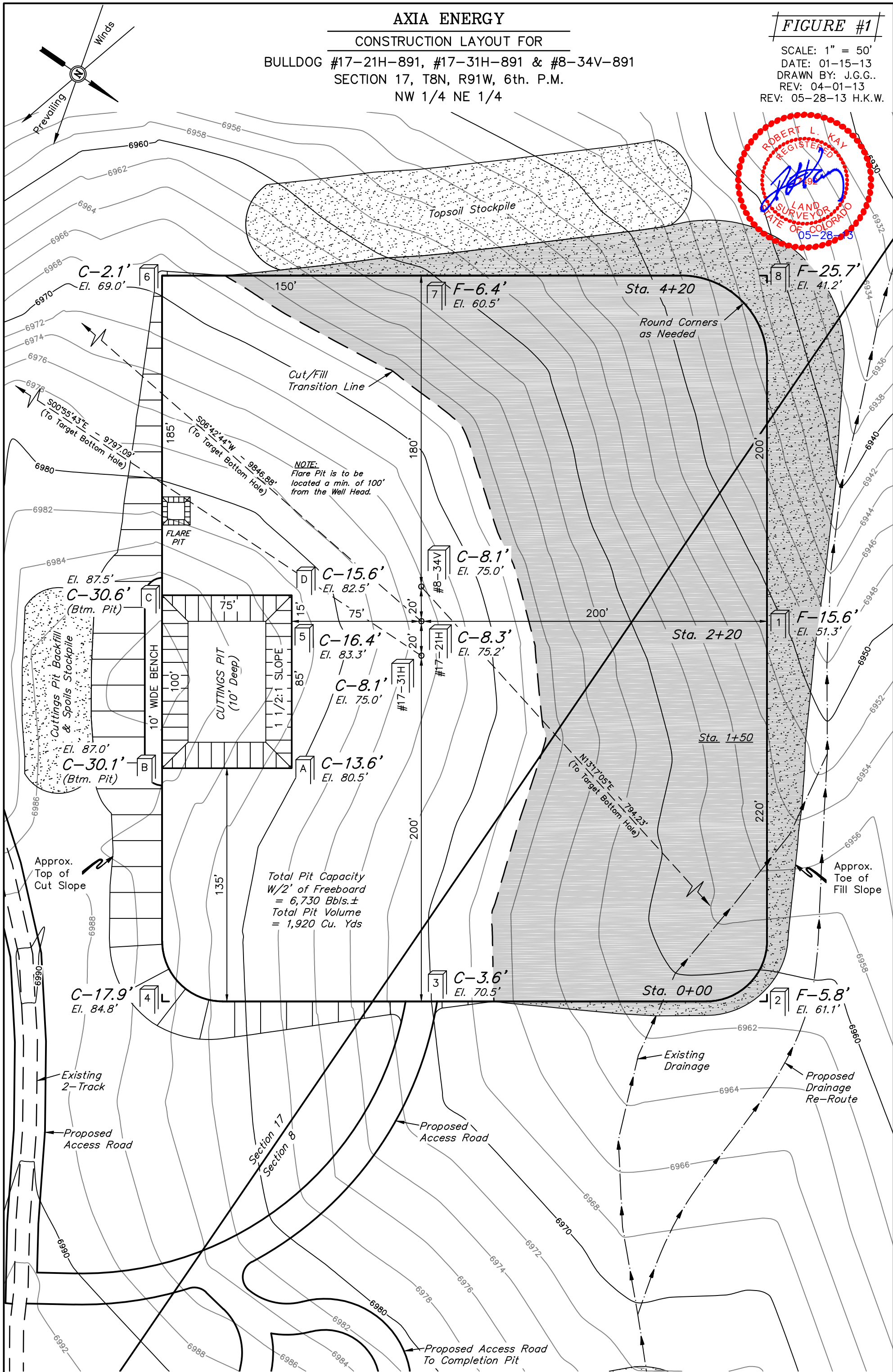
SCALE: 1" = 50'

DATE: 01-15-13

DRAWN BY: J.G.G..

REV: 04-01-13

REV: 05-28-13 H.K.W.



Elev. Ungraded Ground At #17-21H Loc. Stake = 6975.2'
FINISHED GRADE ELEV. AT #17-21H LOC. STAKE = 6966.9'

UINTAH ENGINEERING & LAND SURVEYING
85 So. 200 East * Vernal, Utah 84078 * (435) 789-1017

AXIA ENERGY

CONSTRUCTION LAYOUT CROSS SECTIONS FOR

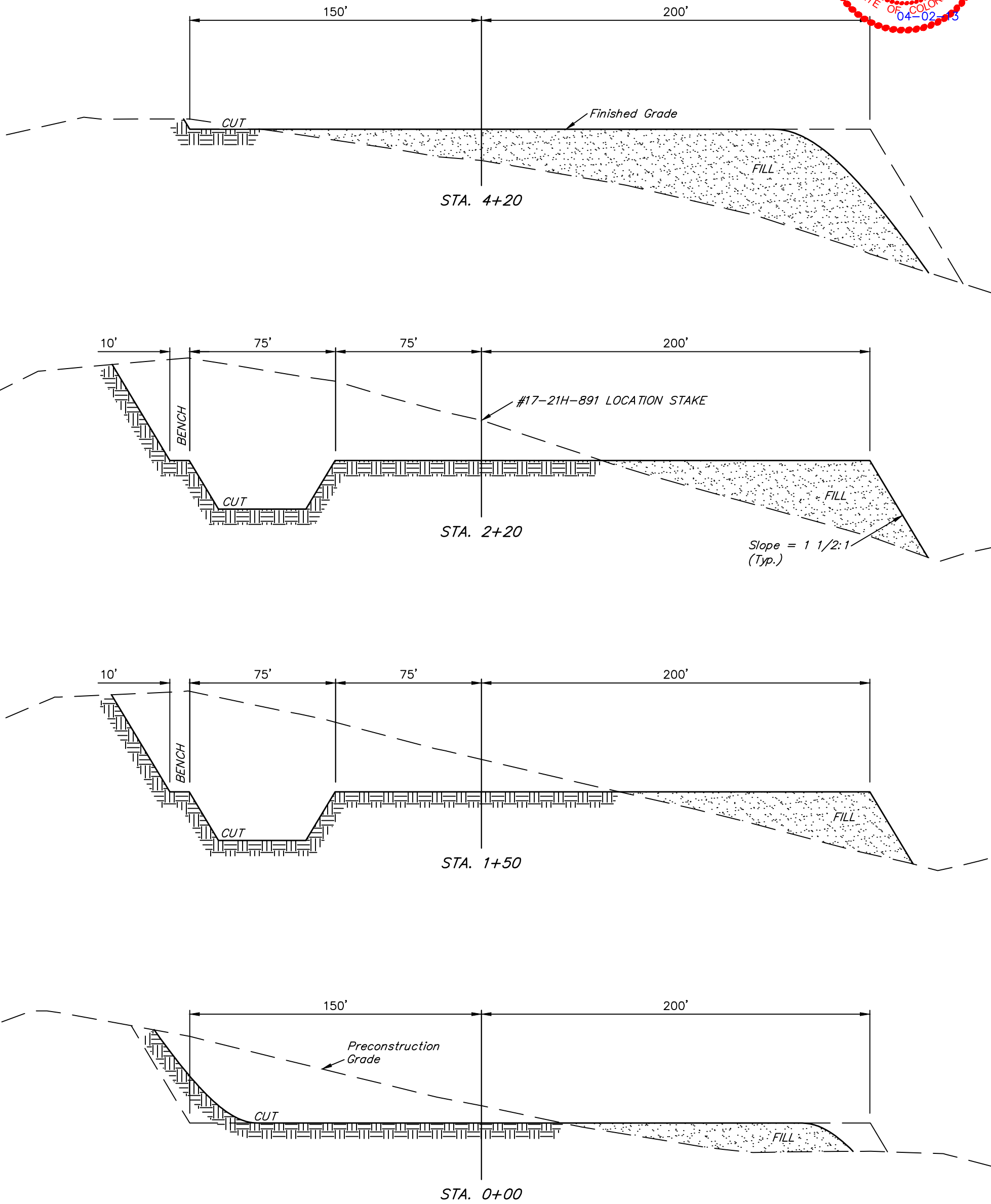
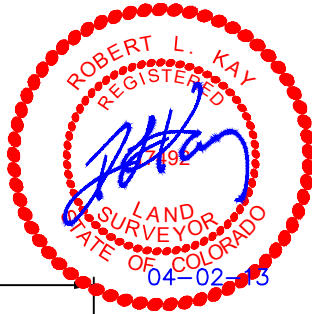
BULLDOG #17-21H-891, #17-31H-891 & #8-34V-891

SECTION 17, T8N, R91W, 6th. P.M.

NW 1/4 NE 1/4

FIGURE #2

1" = 20'
X-Section
Scale
1" = 50'
DATE: 01-15-13
DRAWN BY: J.G.G.
REV: 04-01-13



NOTE:

Topsoil should not be Stripped Below Finished Grade on Substructure Area.

* NOTE:

FILL QUANTITY INCLUDES 5% FOR COMPACTION

APPROXIMATE YARDAGES

(6") Topsoil Stripping = 3,330 Cu. Yds.
Remaining Location = 30,550 Cu. Yds.
TOTAL CUT = 33,880 CU. YDS.
FILL = 29,590 CU. YDS.

EXCESS MATERIAL = 4,290 Cu. Yds.
Topsoil & Pit Backfill = 4,290 Cu. Yds.
(1/2 Pit Vol.)
EXCESS UNBALANCE = 0 Cu. Yds.
(After Interim Rehabilitation)

APPROXIMATE ACREAGES

WELL SITE DISTURBANCE = ± 4.503 ACRES
WELL ACCESS ROAD DISTURBANCE = ± 1.207 ACRES
PIT ACCESS ROAD DISTURBANCE = ± 0.236 ACRES
TOTAL = ± 5.946 ACRES

UINTAH ENGINEERING & LAND SURVEYING
85 So. 200 East * Vernal, Utah 84078 * (435) 789-1017