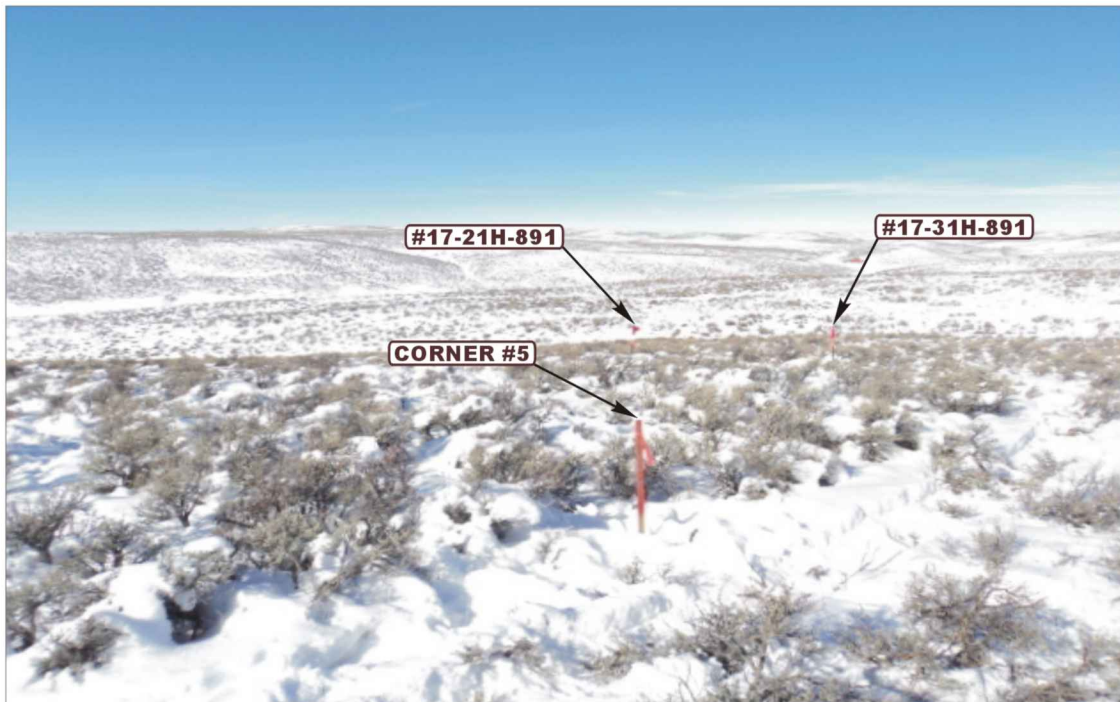


**AXIA ENERGY**  
**BULLDOG #17-21H-891 & #17-31H-891**  
LOCATED IN MOFFAT COUNTY, COLORADO  
SECTION 17, T8N, R91W, 6th P.M.



**PHOTO: VIEW FROM CORNER #5 TO LOCATION STAKES**

**CAMERA ANGLE: NORTHWESTERLY**



**PHOTO: VIEW FROM BEGINNING OF PROPOSED ACCESS**

**CAMERA ANGLE: EASTERLY**



- Since 1964 -

**U&LS** Uintah Engineering & Land Surveying  
85 South 200 East Vernal, Utah 84078  
(435) 789-1017 \* FAX (435) 789-1813

**LOCATION PHOTOS**

**01**  
MONTH

**11**  
DAY

**13**  
YEAR

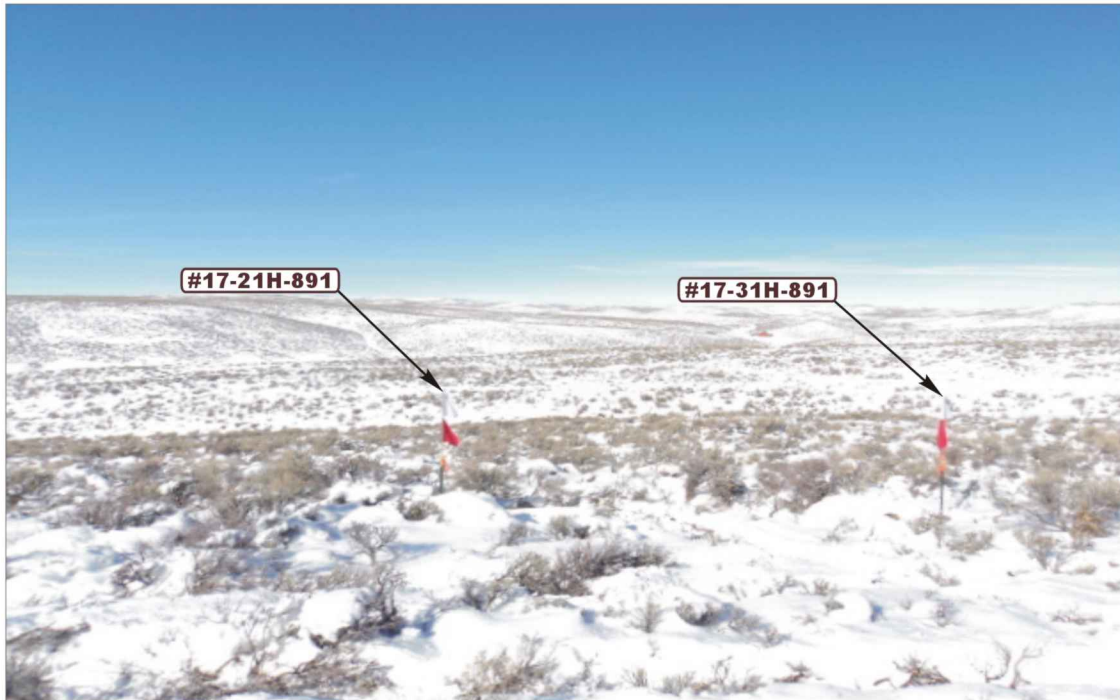
**PHOTO**  
**P1**

**TAKEN BY: G.M.**

**DRAWN BY: M.B.**

**REVISED: 00-00-00**

**AXIA ENERGY**  
**BULLDOG #17-21H-891 & #17-31H-891**  
LOCATED IN MOFFAT COUNTY, COLORADO  
SECTION 17, T8N, R91W, 6th P.M.



**PHOTO: VIEW OF LOCATION STAKE**

**CAMERA ANGLE: NORTHERLY**



**PHOTO: VIEW OF LOCATION STAKE**

**CAMERA ANGLE: EASTERLY**



- Since 1964 -



Uintah Engineering & Land Surveying  
85 South 200 East Vernal, Utah 84078  
(435) 789-1017 \* FAX (435) 789-1813

**LOCATION PHOTOS**

**01** **11** **13**  
MONTH DAY YEAR

TAKEN BY: G.M. DRAWN BY: M.B. REVISED: 00-00-00

**PHOTO**  
**P2**



**AXIA ENERGY**  
**BULLDOG #17-21H-891 & #17-31H-891**  
LOCATED IN MOFFAT COUNTY, COLORADO  
SECTION 17, T8N, R91W, 6th P.M.

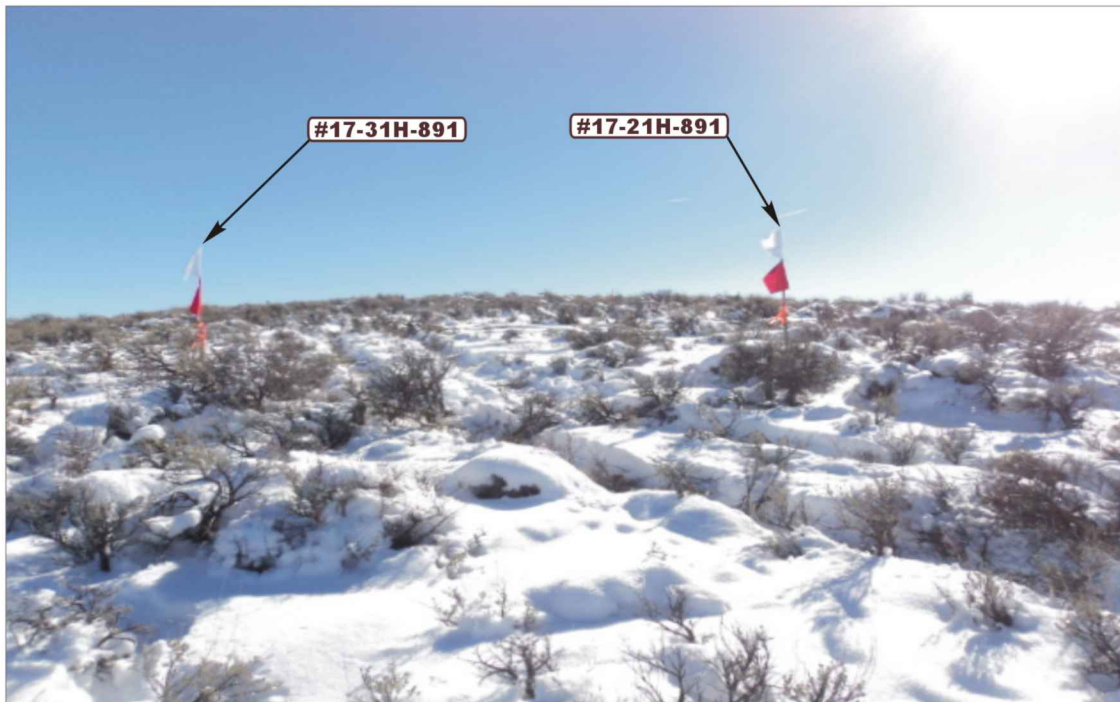


PHOTO: VIEW OF LOCATION STAKE

CAMERA ANGLE: SOUTHERLY

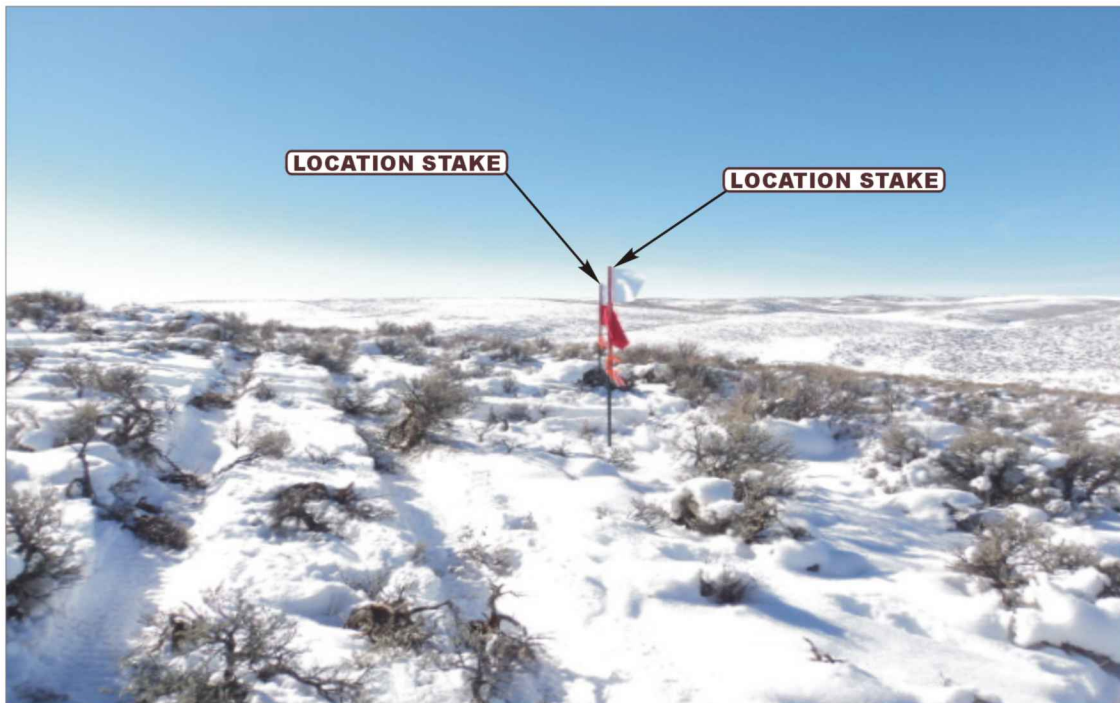


PHOTO: VIEW OF LOCATION STAKE

CAMERA ANGLE: WESTERLY



- Since 1964 -

**UELS**

Uintah Engineering & Land Surveying  
85 South 200 East Vernal, Utah 84078  
(435) 789-1017 \* FAX (435) 789-1813

**LOCATION PHOTOS**

**01**  
MONTH

**11**  
DAY

**13**  
YEAR

**PHOTO**

**P3**

TAKEN BY: G.M.

DRAWN BY: M.B.

REVISED: 00-00-00