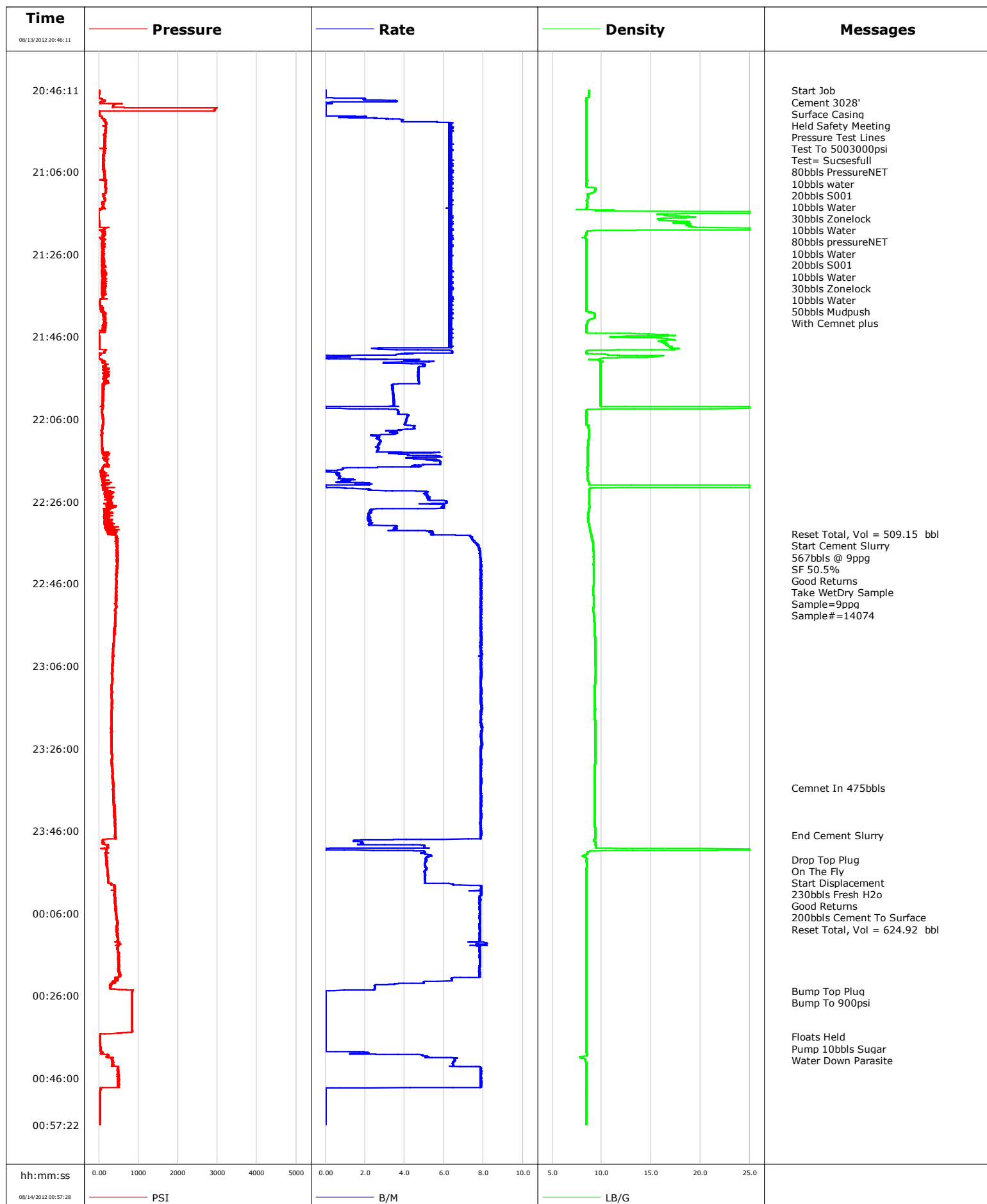


<b>Well</b>	SG 8504E	<b>Client</b>	ENCANA
<b>Field</b>	N PARACHUTE	<b>SIR No.</b>	C610-00553
<b>Engineer</b>		<b>Job Type</b>	SURFACE
<b>Country</b>	United States	<b>Job Date</b>	08-13-2012

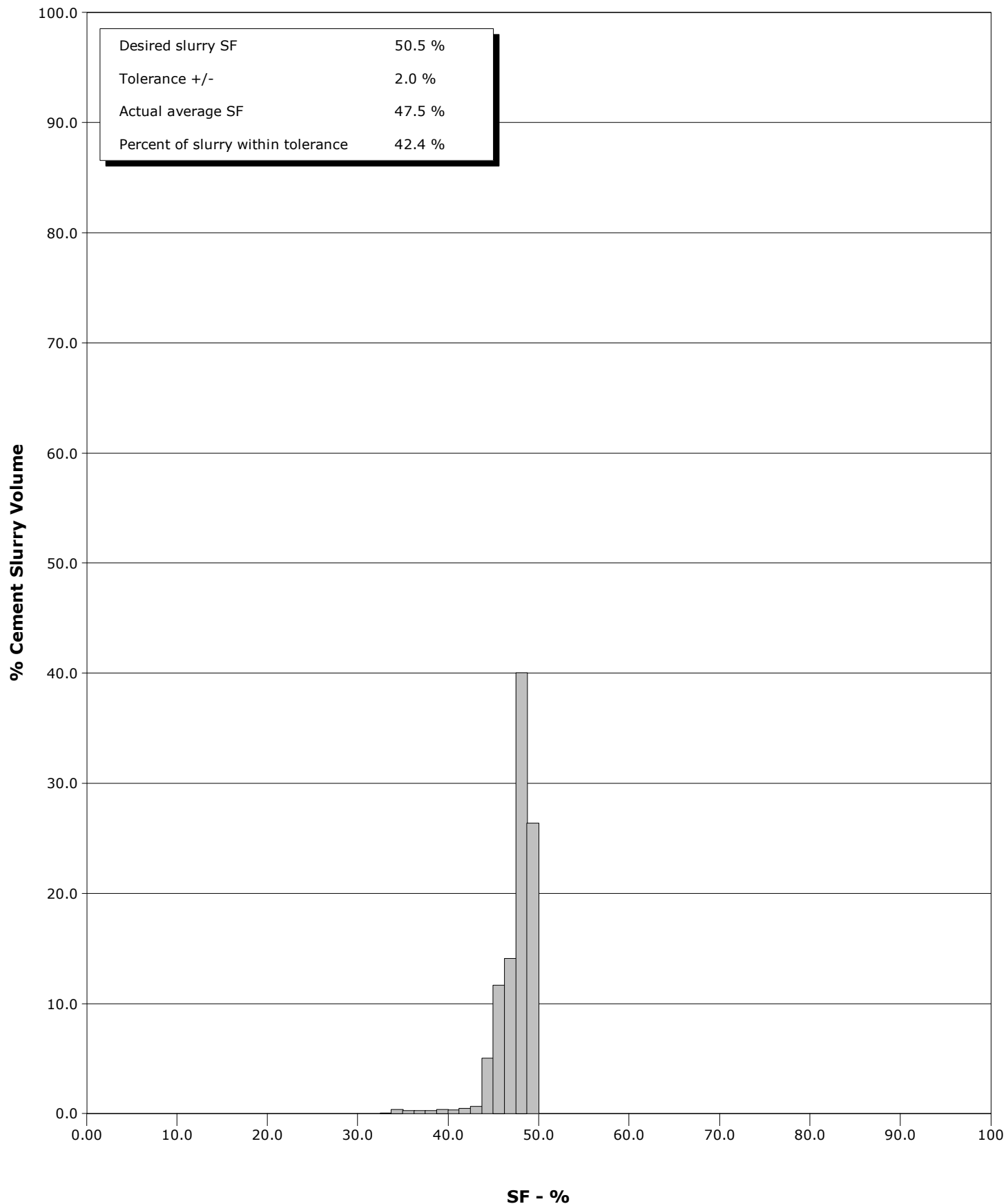


# Schlumberger Cementing Qa/Qc SFM Report

**Well** SG 8504E  
**Field** N PARACHUTE  
**Engineer**  
**Country** United States

**Client** ENCANA  
**SIR No.** C610-00553  
**Job Type** SURFACE  
**Job Date** 08-13-2012

Cement Slurry - 08/13/2012 22:34:31 to 08/13/2012 23:47:00



Page 1 of 5

Well			Field		Job Start	Customer		Job Number
SG 8504E			N PARACHUTE		Aug/13/2012	ENCANA		C610-00553
Date	Time 24-hr clock	Treating Pressure PSI	Flow Rate B/M	Density LB/G	Volume BBL	Message		
08/13/2012	20:54:41					10bbls Water		
08/13/2012	20:54:41	172	6.4	8.45	11.6			
08/13/2012	20:56:18	166	6.2	8.45	21.8			
08/13/2012	20:58:18	147	6.2	8.46	34.4			
08/13/2012	21:00:18	140	6.4	8.46	47.0			
08/13/2012	21:02:18	103	6.2	8.46	59.6			
08/13/2012	21:04:18	120	6.2	8.46	72.2			
08/13/2012	21:06:18	136	6.4	8.46	84.9			
08/13/2012	21:07:24					30bbls Zonelock		
08/13/2012	21:07:24					10bbls Water		
08/13/2012	21:07:24					80bbls pressureNET		
08/13/2012	21:07:24	139	6.2	8.46	91.8			
08/13/2012	21:07:25					10bbls Water		
08/13/2012	21:07:25	154	6.4	8.46	91.9			
08/13/2012	21:08:18	162	6.4	8.46	97.5			
08/13/2012	21:10:18	178	6.2	9.34	110.1			
08/13/2012	21:12:18	138	6.4	8.64	122.7			
08/13/2012	21:14:18	105	6.2	8.54	135.3			
08/13/2012	21:16:18	-6	6.4	15.68	147.9			
08/13/2012	21:18:18	-2	6.2	17.60	160.6			
08/13/2012	21:20:18	55	6.4	9.23	173.2			
08/13/2012	21:22:18	61	6.2	8.43	185.8			
08/13/2012	21:23:09					20bbls S001		
08/13/2012	21:23:09					10bbls Water		
08/13/2012	21:23:09					30bbls Zonelock		
08/13/2012	21:23:09					10bbls Water		
08/13/2012	21:23:09	91	6.4	8.45	191.2			
08/13/2012	21:23:46					50bbls Mudpush		
08/13/2012	21:23:46					With Cemnet plus		
08/13/2012	21:23:46	76	6.4	8.45	195.1			
08/13/2012	21:24:18	94	6.4	8.45	198.4			
08/13/2012	21:26:18	110	6.4	8.45	211.0			
08/13/2012	21:28:18	98	6.4	8.45	223.6			
08/13/2012	21:30:18	169	6.5	8.45	236.2			
08/13/2012	21:32:18	135	6.4	8.45	248.9			
08/13/2012	21:34:18	75	6.2	8.46	261.5			
08/13/2012	21:36:18	96	6.4	8.46	274.1			
08/13/2012	21:38:18	27	6.4	8.46	286.7			
08/13/2012	21:40:18	169	6.4	9.22	299.3			
08/13/2012	21:42:18	150	6.2	8.58	312.0			
08/13/2012	21:44:18	91	6.4	8.46	324.6			
08/13/2012	21:46:18	3	6.2	15.01	337.2			
08/13/2012	21:48:18	11	6.2	16.83	349.8			
08/13/2012	21:50:18	39	3.7	10.36	360.1			
08/13/2012	21:52:18	85	2.9	9.87	364.9			
08/13/2012	21:54:18	163	4.7	9.87	374.0			
08/13/2012	21:56:18	112	4.7	9.87	383.4			
08/13/2012	21:58:18	95	3.4	9.87	391.7			
08/13/2012	22:00:18	120	3.4	9.87	398.5			
08/13/2012	22:02:18	94	3.5	9.87	405.4			
08/13/2012	22:04:18	81	3.7	8.46	410.6			
08/13/2012	22:06:18	101	4.1	8.47	418.6			
08/13/2012	22:08:18	96	4.5	8.67	427.0			
08/13/2012	22:10:18	70	2.6	8.72	433.8			

Well			Field		Job Start	Customer		Job Number
SG 8504E			N PARACHUTE		Aug/13/2012	ENCANA		C610-00553
Date	Time 24-hr clock	Treating Pressure PSI	Flow Rate B/M	Density LB/G	Volume BBL	Message		
08/13/2012	22:14:18	89	3.5	8.59	444.9			
08/13/2012	22:16:18	201	5.8	8.61	454.7			
08/13/2012	22:18:18	97	0.8	8.57	462.9			
08/13/2012	22:20:18	103	0.7	8.56	463.9			
08/13/2012	22:22:18	99	0.0	25.00	466.2			
08/13/2012	22:24:18	142	5.1	8.73	471.9			
08/13/2012	22:26:18	332	6.1	8.73	482.7			
08/13/2012	22:28:18	225	2.3	8.68	492.7			
08/13/2012	22:30:18	133	2.1	8.63	497.1			
08/13/2012	22:32:18	228	3.5	8.77	502.1			
08/13/2012	22:33:54					Reset Total, Vol = 509.15 bbl		
08/13/2012	22:33:54	431	5.4	8.91	509.1			
08/13/2012	22:34:18	443	7.1	8.96	511.4			
08/13/2012	22:34:31					Start Cement Slurry		
08/13/2012	22:34:31	438	7.3	8.99	513.0			
08/13/2012	22:34:32					567bbls @ 9ppg		
08/13/2012	22:34:32					SF 50.5%		
08/13/2012	22:34:32	458	7.3	8.99	513.1			
08/13/2012	22:34:33					Good Returns		
08/13/2012	22:34:33					Take WetDry Sample		
08/13/2012	22:34:33					Sample=9ppg		
08/13/2012	22:34:33					Sample#=14074		
08/13/2012	22:34:33	458	7.3	8.99	513.3			
08/13/2012	22:36:18	440	7.6	9.13	526.3			
08/13/2012	22:38:18	455	7.8	9.17	541.8			
08/13/2012	22:40:18	458	7.8	9.17	557.5			
08/13/2012	22:42:18	466	7.8	9.19	573.2			
08/13/2012	22:44:18	450	7.9	9.20	588.9			
08/13/2012	22:46:18	450	7.9	9.17	604.6			
08/13/2012	22:48:18	437	7.9	9.15	620.4			
08/13/2012	22:50:18	432	7.9	9.18	636.1			
08/13/2012	22:52:18	427	7.9	9.15	651.8			
08/13/2012	22:54:18	417	7.9	9.24	667.5			
08/13/2012	22:56:18	406	7.8	9.28	683.3			
08/13/2012	22:58:18	374	7.9	9.30	699.0			
08/13/2012	23:00:18	378	7.9	9.34	714.7			
08/13/2012	23:02:18	358	7.9	9.33	730.4			
08/13/2012	23:04:18	350	7.9	9.33	746.2			
08/13/2012	23:06:18	341	7.8	9.38	761.9			
08/13/2012	23:08:18	335	7.9	9.38	777.7			
08/13/2012	23:10:18	339	7.8	9.33	793.4			
08/13/2012	23:12:18	331	7.9	9.30	809.1			
08/13/2012	23:14:18	335	7.9	9.29	824.8			
08/13/2012	23:16:18	334	7.9	9.31	840.6			
08/13/2012	23:18:18	321	7.8	9.30	856.3			
08/13/2012	23:20:18	318	7.9	9.33	872.1			
08/13/2012	23:22:18	325	7.9	9.34	887.9			
08/13/2012	23:24:18	322	7.9	9.35	903.6			
08/13/2012	23:26:18	324	7.9	9.35	919.4			
08/13/2012	23:28:18	339	7.9	9.36	935.1			
08/13/2012	23:30:18	338	7.9	9.30	950.8			
08/13/2012	23:32:18	348	7.9	9.30	966.5			
08/13/2012	23:34:18	355	7.9	9.29	982.3			
08/13/2012	23:35:35					Cemnet In 475bbls		

Well			Field		Job Start	Customer		Job Number
SG 8504E			N PARACHUTE		Aug/13/2012	ENCANA		C610-00553
Date	Time 24-hr clock	Treating Pressure PSI	Flow Rate B/M	Density LB/G	Volume BBL	Message		
08/13/2012	23:36:18	361	7.9	9.30	998.0			
08/13/2012	23:38:18	367	7.9	9.31	1013.7			
08/13/2012	23:40:18	395	7.9	9.30	1029.4			
08/13/2012	23:42:18	389	7.9	9.30	1045.1			
08/13/2012	23:44:18	417	7.8	9.30	1060.8			
08/13/2012	23:46:18	414	7.9	9.34	1076.5			
08/13/2012	23:47:00					End Cement Slurry		
08/13/2012	23:47:00	428	7.9	9.35	1082.0			
08/13/2012	23:48:18	96	1.6	9.22	1091.0			
08/13/2012	23:50:18	60	0.0	12.48	1097.3			
08/13/2012	23:52:18	175	5.2	8.23	1105.0			
08/13/2012	23:52:55					Drop Top Plug		
08/13/2012	23:52:55	193	5.1	8.51	1108.2			
08/13/2012	23:52:56					On The Fly		
08/13/2012	23:52:56	191	5.1	8.51	1108.3			
08/13/2012	23:52:58					Start Displacement		
08/13/2012	23:52:58	192	5.1	8.51	1108.4			
08/13/2012	23:52:59					230bbls Fresh H2o		
08/13/2012	23:52:59					Good Returns		
08/13/2012	23:52:59	195	5.1	8.50	1108.5			
08/13/2012	23:54:18	196	5.0	8.49	1115.2			
08/13/2012	23:56:18	221	5.0	8.48	1125.3			
08/13/2012	23:56:49					200bbls Cement To Surface		
08/13/2012	23:56:49	232	5.1	8.46	1127.9			
08/13/2012	23:58:03					Reset Total, Vol = 624.92 bbl		
08/13/2012	23:58:03	227	5.0	8.47	1134.1			
08/13/2012	23:58:18	236	5.0	8.47	1135.3			
08/14/2012	00:00:18	400	7.9	8.47	1149.0			
08/14/2012	00:02:18	407	7.8	8.47	1164.7			
08/14/2012	00:04:18	422	7.8	8.47	1180.3			
08/14/2012	00:06:18	427	7.8	8.47	1195.9			
08/14/2012	00:08:18	471	7.8	8.47	1211.5			
08/14/2012	00:10:18	457	7.8	8.48	1227.1			
08/14/2012	00:12:18	492	7.8	8.48	1242.7			
08/14/2012	00:14:18	476	7.8	8.48	1258.5			
08/14/2012	00:16:18	490	7.8	8.48	1274.1			
08/14/2012	00:18:18	508	7.8	8.48	1289.7			
08/14/2012	00:20:18	499	7.8	8.47	1305.2			
08/14/2012	00:22:18	457	6.4	8.48	1319.9			
08/14/2012	00:24:18	289	2.5	8.47	1327.4			
08/14/2012	00:24:48					Bump Top Plug		
08/14/2012	00:24:48	856	0.2	8.48	1328.5			
08/14/2012	00:24:50					Bump To 900psi		
08/14/2012	00:24:50	841	0.0	8.48	1328.5			
08/14/2012	00:26:18	836	0.0	8.48	1328.5			
08/14/2012	00:28:18	837	0.0	8.48	1328.5			
08/14/2012	00:30:18	840	0.0	8.48	1328.5			
08/14/2012	00:32:18	842	0.0	8.48	1328.5			
08/14/2012	00:34:18	845	0.0	8.48	1328.5			
08/14/2012	00:36:03					Floats Held		
08/14/2012	00:36:03	27	0.0	8.48	1328.5			
08/14/2012	00:36:18	29	0.0	8.48	1328.5			
08/14/2012	00:36:21					Pump 10bbls Sugar		
08/14/2012	00:36:21					Water Down Parasite		

Well			Field		Job Start	Customer		Job Number
SG 8504E			N PARACHUTE		Aug/13/2012	ENCANA		C610-00553
Date	Time 24-hr clock	Treating Pressure PSI	Flow Rate B/M	Density LB/G	Volume BBL	Message		
08/14/2012	00:38:18	35	0.0	8.48	1328.5			
08/14/2012	00:40:18	137	2.6	8.50	1329.8			
08/14/2012	00:42:18	339	6.4	8.45	1341.5			
08/14/2012	00:44:18	475	7.9	8.45	1355.8			
08/14/2012	00:46:18	499	7.9	8.45	1371.6			
08/14/2012	00:48:18	472	7.9	8.46	1387.3			
08/14/2012	00:50:18	25	0.0	8.48	1388.2			
08/14/2012	00:52:18	25	0.0	8.48	1388.2			
08/14/2012	00:54:18	25	0.0	8.48	1388.2			

Post Job Summary

Average Pump Rates, bbl/min					Volume of Fluid Injected, bbl			
Slurry 6.3	N2	Mud 0.0	Maximum Rate 8.2	Total Slurry 1386.6	Mud 0.0	Spacer 513.0	N2	
Treating Pressure Summary, psi					Breakdown Fluid			
Maximum 2986	Final 484	Average 294	Bump Plug to 900	Breakdown	Type	Volume	Density	
Avg. N2 Percent		Designed Slurry Volume 567.0 bbl	Displacement 220.4 bbl	Mix Water Temp 64 degF	Cement Circulated to Surface? <input checked="" type="checkbox"/>	Volume 200.0 bbl		
					Washed Thru Perfs <input type="checkbox"/>	To		
Customer or Authorized Representative MIKE QUINTANA			Schlumberger Supervisor JASON CRICK			Circulation Lost <input type="checkbox"/>	Job Completed <input checked="" type="checkbox"/>	
						-	-	