



Bringelson Ranch #3-33-9-58

TVD
5":100'

Company: Carrizo Oil & Gas, Inc.

State: CO

Well Name: Bringelson Ranch #3-33-9-58

County/Parish: Weld

UWI: 5-123-36331-00

Survey Company: PDSI

Rig Id: Xtreme 19

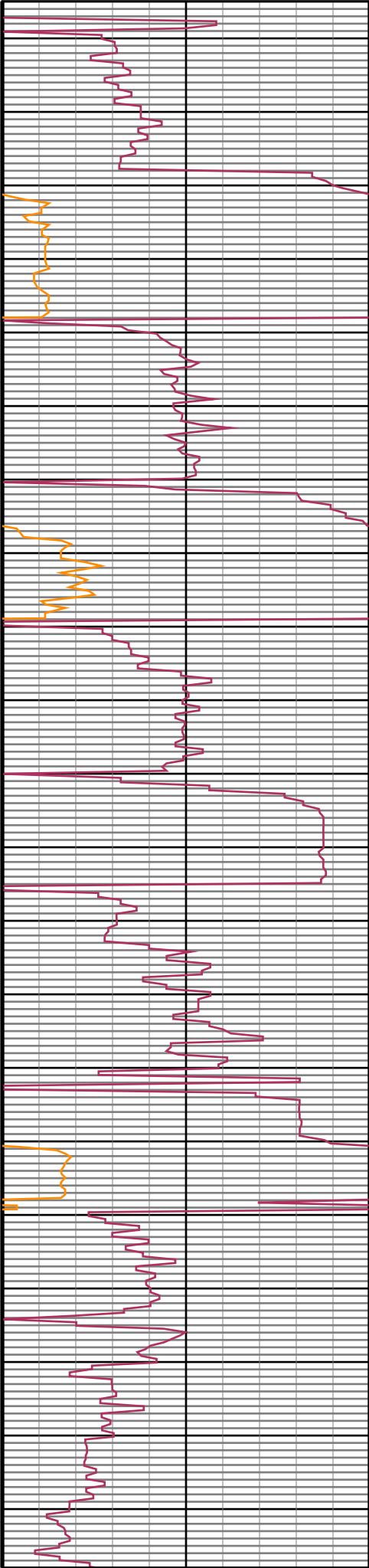
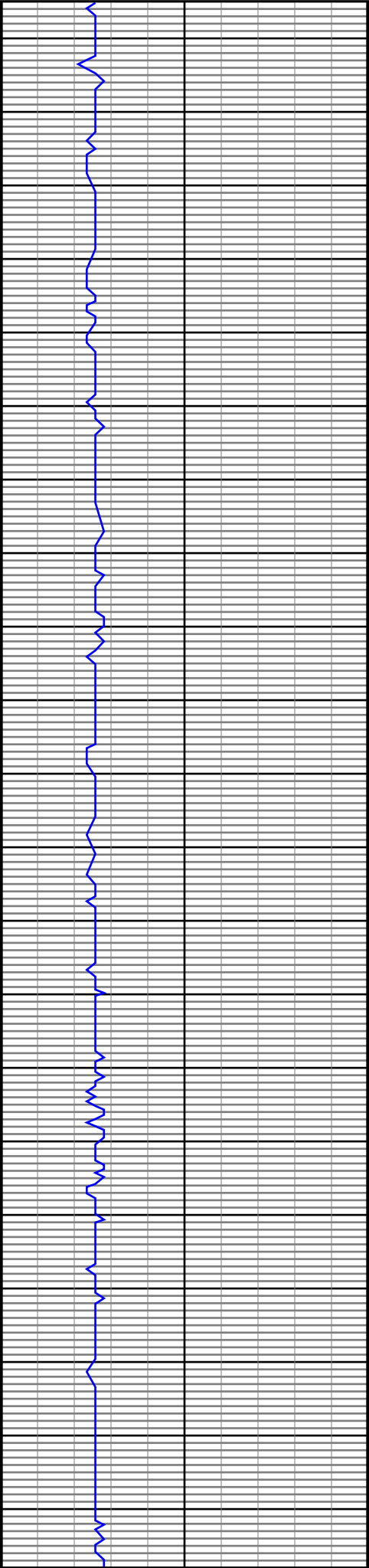
Job number: DL1536

Gamma
API

0.0	<hr/>	150.0
150.0	<hr/>	300.0

ROP
0

0.0	<hr/>	150.0
150.0	<hr/>	300.0



#3 MD(5195.00) Inc(7.9) Azm(90.1) TVD(5159.23)
VS(-118.52) NS(132.91) EW(571.24)

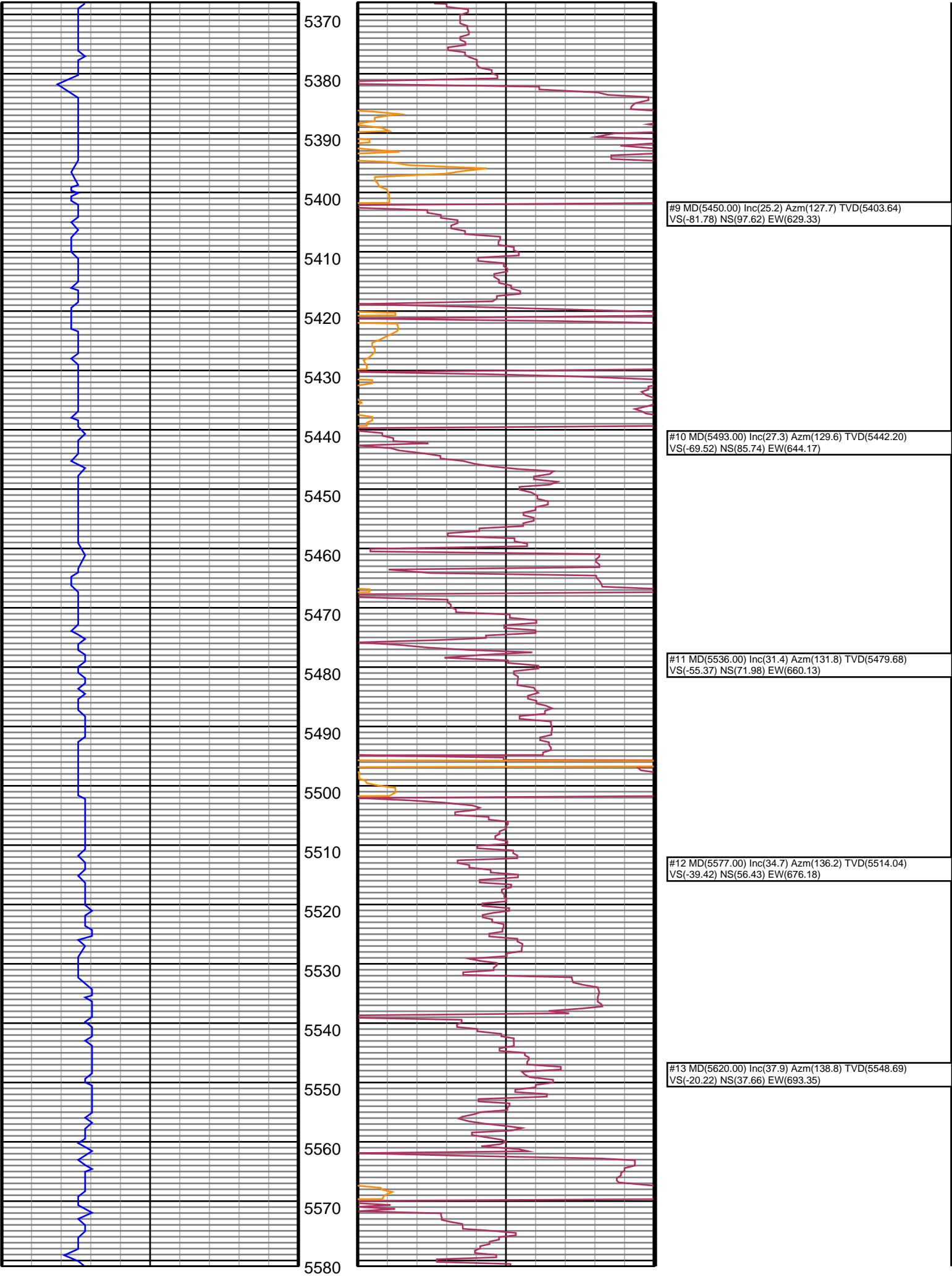
#4 MD(5237.00) Inc(9.8) Azm(106.4) TVD(5200.74)
VS(-117.34) NS(131.90) EW(577.55)

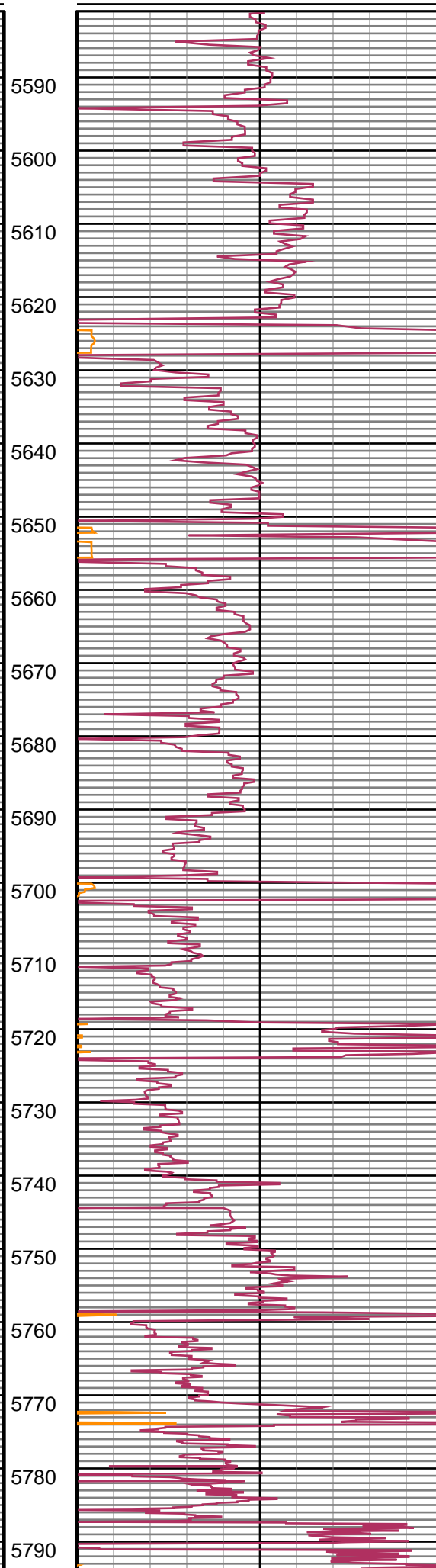
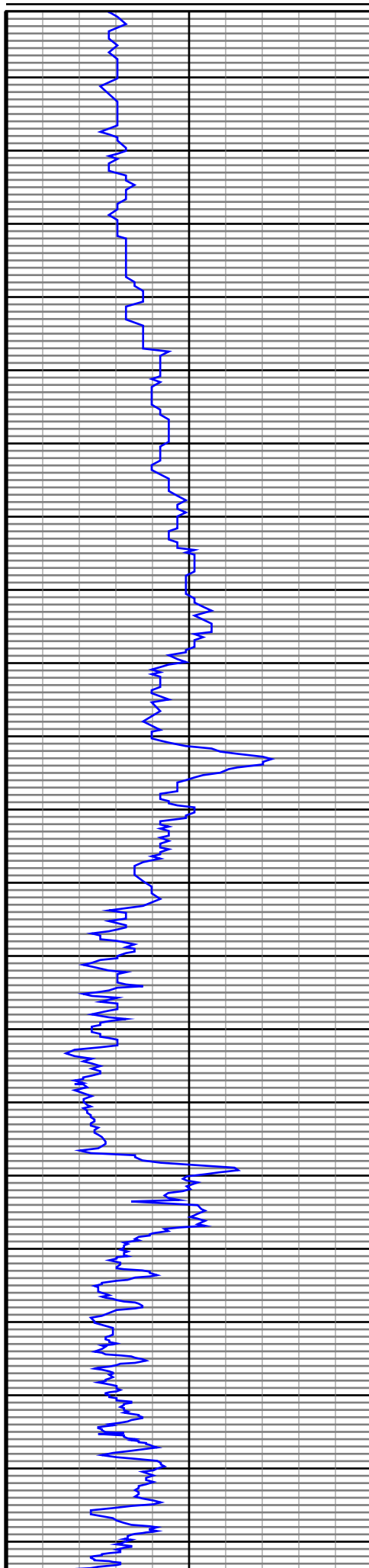
#5 MD(5280.00) Inc(12.1) Azm(117.7) TVD(5242.95)
VS(-114.03) NS(128.77) EW(585.06)

#6 MD(5322.00) Inc(15.0) Azm(123.5) TVD(5283.78)
VS(-108.77) NS(123.72) EW(593.49)

#7 MD(5365.00) Inc(18.0) Azm(126.1) TVD(5325.01)
VS(-101.53) NS(116.73) EW(603.50)

#8 MD(5408.00) Inc(22.9) Azm(126.0) TVD(5365.29)
VS(-92.39) NS(107.90) EW(615.64)





#14 MD(5662.00) Inc(41.3) Azm(141.3) TVD(5581.05)
VS(0.74) NS(17.13) EW(710.52)

#15 MD(5705.00) Inc(46.3) Azm(142.3) TVD(5612.08)
VS(24.58) NS(-6.26) EW(728.91)

#16 MD(5747.00) Inc(50.2) Azm(144.9) TVD(5640.04)
VS(50.26) NS(-31.49) EW(747.48)

#17 MD(5790.00) Inc(54.4) Azm(147.9) TVD(5666.34)
VS(79.07) NS(-59.83) EW(766.28)

#18 MD(5833.00) Inc(59.1) Azm(151.4) TVD(5689.91)
VS(110.54) NS(-90.86) EW(784.42)

#19 MD(5875.00) Inc(63.0) Azm(155.0) TVD(5710.24) VS(143.75) NS(-123.66) EW(800.96)
--

#20 MD(5899.00) Inc(64.6) Azm(156.6) TVD(5720.84)
VS(163.60) NS(-143.30) EW(809.78)

#21 MD(5947.00) Inc(68.8) Azm(159.0) TVD(5739.82)
VS(204.82) NS(-184.11) EW(826.42)

#22 MD(5989.00) Inc(71.8) Azm(163.0) TVD(5753.99)
VS(242.51) NS(-221.49) EW(839.28)

#23 MD(6032.00) Inc(74.3) Azm(165.7) TVD(5766.52)
VS(282.38) NS(-261.09) EW(850.37)

#24 MD(6075.00) Inc(76.6) Azm(168.0) TVD(5777.33)
VS(323.13) NS(-301.61) EW(859.83)

#25 MD(6117.00) Inc(78.1) Azm(170.3) TVD(5786.52)
VS(363.55) NS(-341.86) EW(867.54)

