



# Bringelson Ranch #2-33-9-58

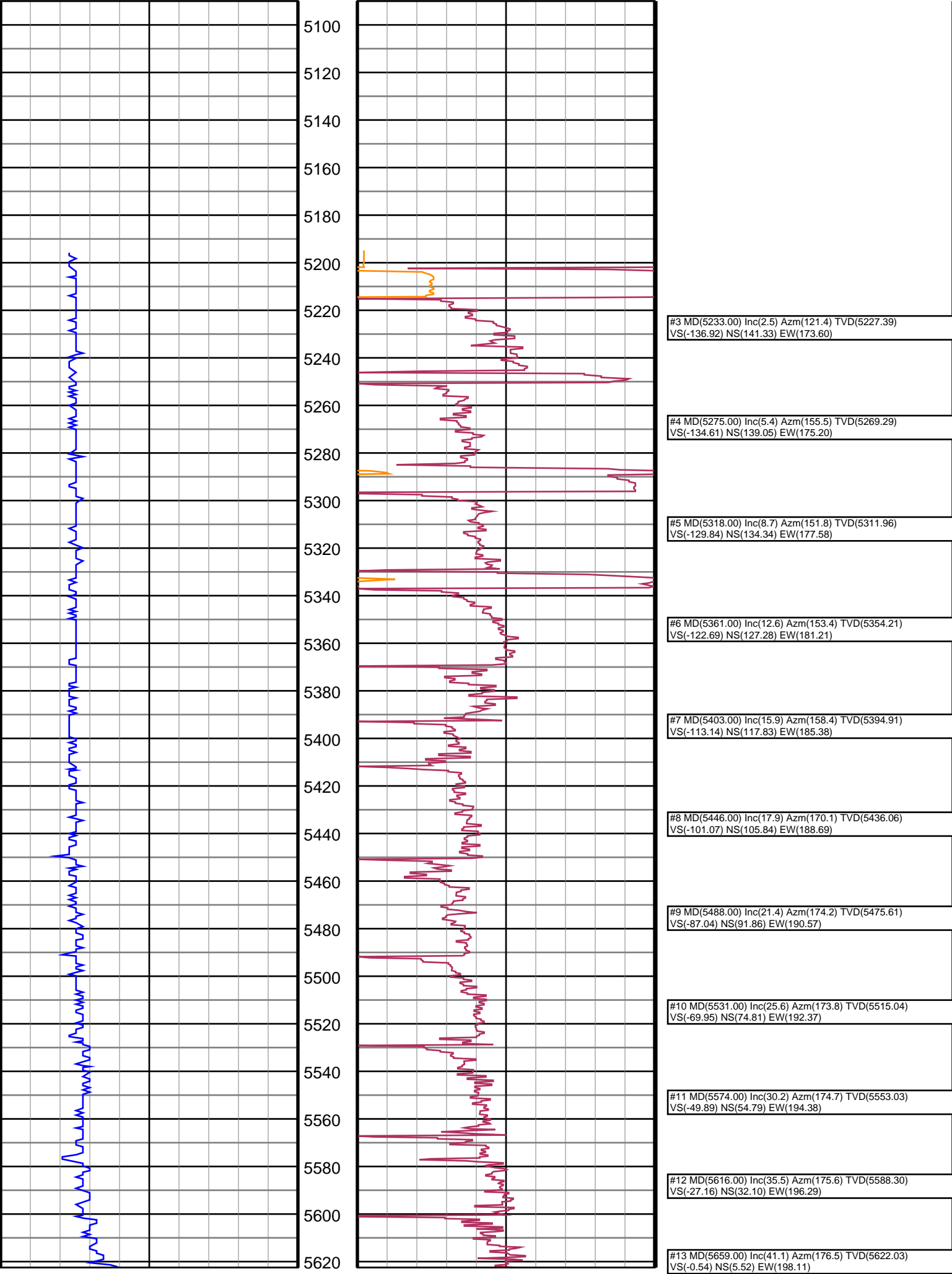
**TVD**  
**2":100'**

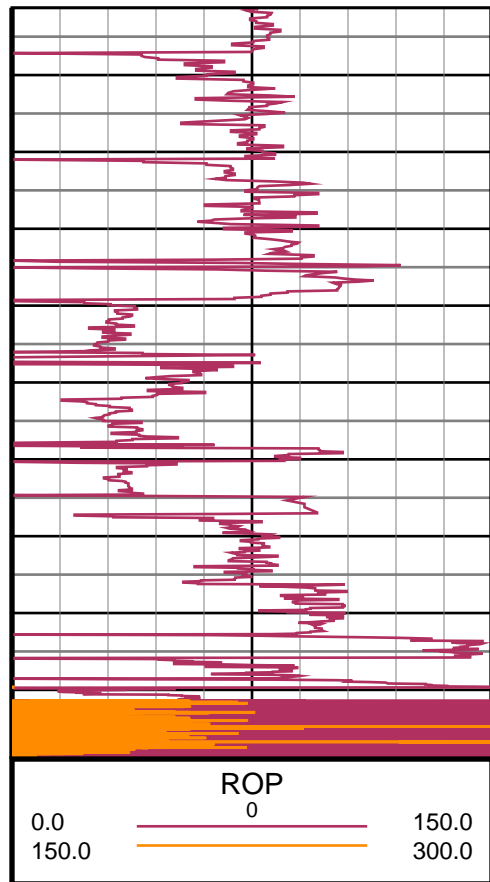
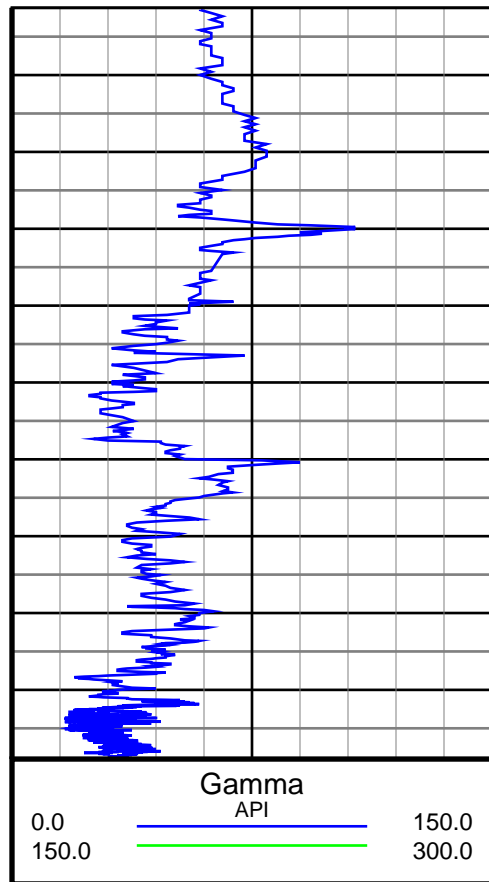
**Company:** Carrizo Oil & Gas, Inc.  
**Well Name:** Bringelson Ranch #2-33-9-58  
**UWI:** 05-123-36332  
**Rig Id:** Xtreme 19

**State:** CO  
**County/Parish:** Weld  
**Survey Company:** PDSI  
**Job number:** DL1505

Gamma			
API			
0.0	_____	150.0	
150.0	_____	300.0	

ROP			
0			
0.0	_____	150.0	
150.0	_____	300.0	





#14 MD(5701.00) Inc(47.1) Azm(176.1) TVD(5652.18)  
VS(28.65) NS(-23.63) EW(200.00)

#15 MD(5744.00) Inc(53.2) Azm(176.6) TVD(5679.72)  
VS(61.62) NS(-56.56) EW(202.09)

#16 MD(5787.00) Inc(56.4) Azm(177.0) TVD(5704.51)  
VS(96.74) NS(-91.64) EW(204.05)

#17 MD(5814.00) Inc(57.9) Azm(177.5) TVD(5719.15)  
VS(119.41) NS(-114.29) EW(205.14)

#18 MD(5868.00) Inc(62.2) Azm(177.9) TVD(5746.10)  
VS(166.19) NS(-161.03) EW(207.01)

#19 MD(5910.00) Inc(66.7) Azm(178.7) TVD(5764.21)  
VS(204.07) NS(-198.90) EW(208.13)

#20 MD(5953.00) Inc(71.5) Azm(180.1) TVD(5779.55)  
VS(244.22) NS(-239.06) EW(208.55)

#21 MD(5996.00) Inc(73.6) Azm(180.9) TVD(5792.44)  
VS(285.22) NS(-280.07) EW(208.19)

#119 MD(10153.00) Inc(88.3) Azm(180.9) TVD(5813.28)  
VS(4437.57) NS(-4432.04) EW(275.78)