



Bringelson Ranch #2-33-9-58

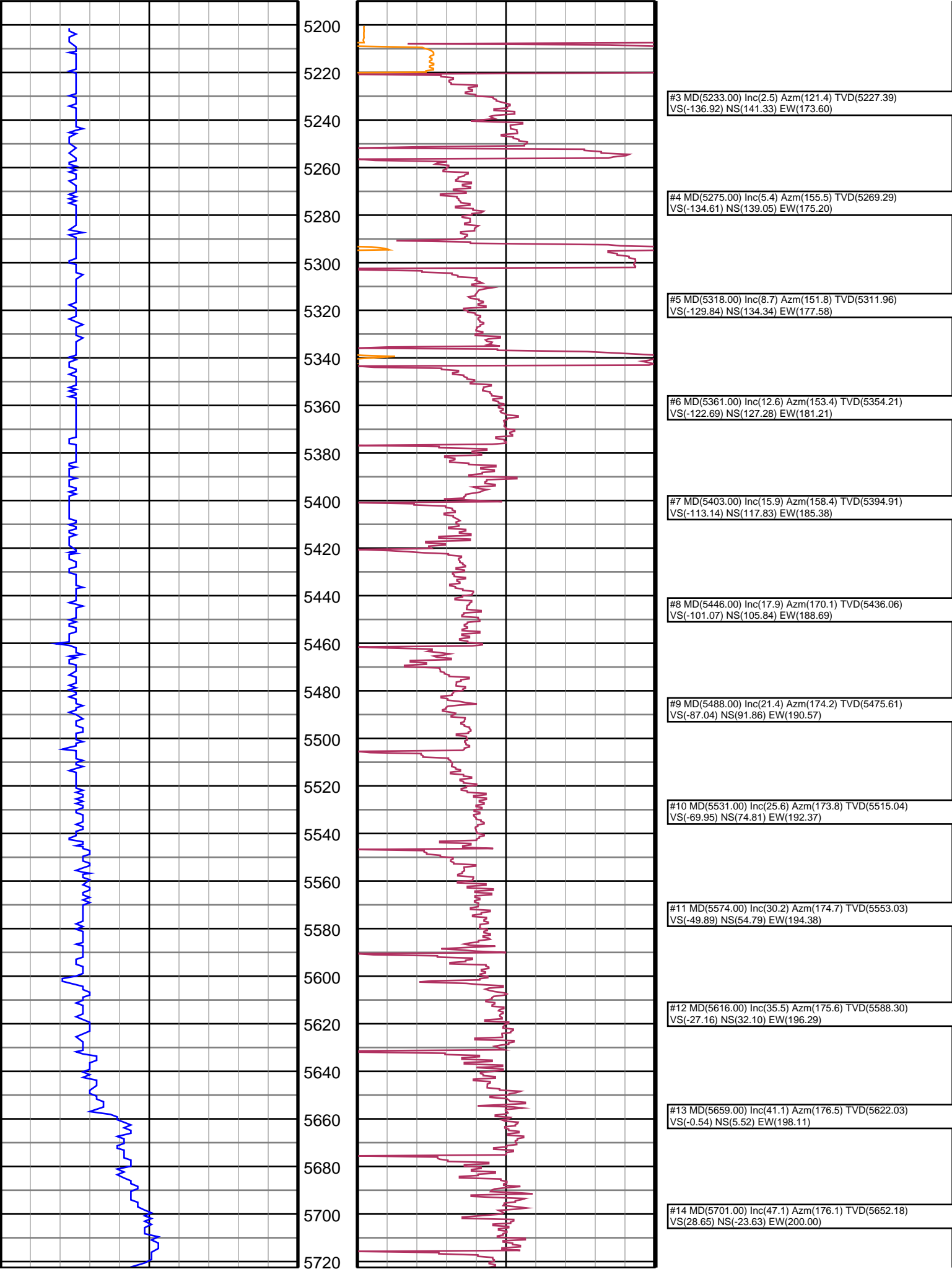
MD
2":100'

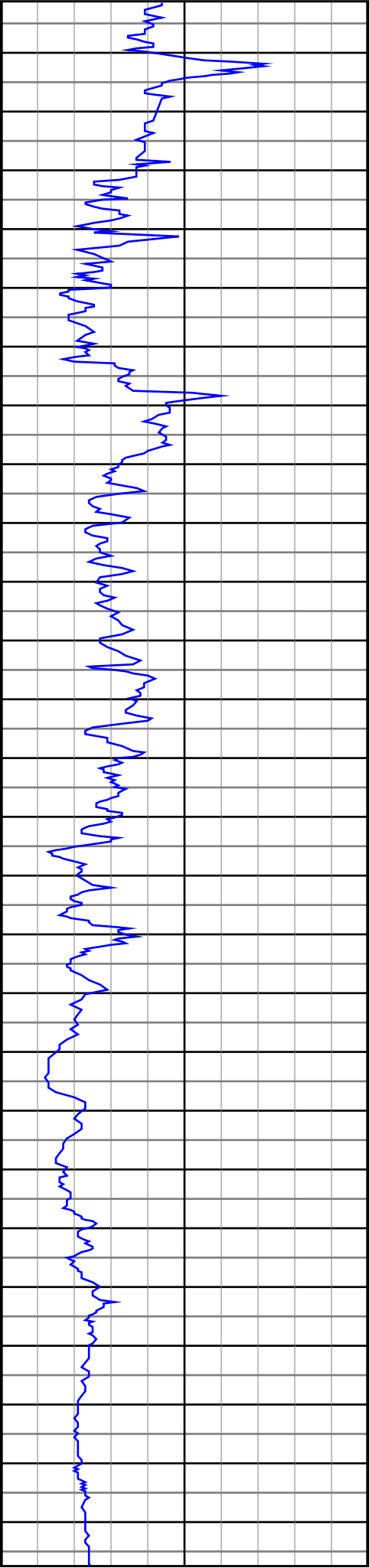
Company: Carrizo Oil & Gas, Inc.
Well Name: Bringelson Ranch #2-33-9-58
UWI: 05-123-36332
Rig Id: Xtreme 19

State: CO
County/Parish: Weld
Survey Company: PDSI
Job number: DL1505

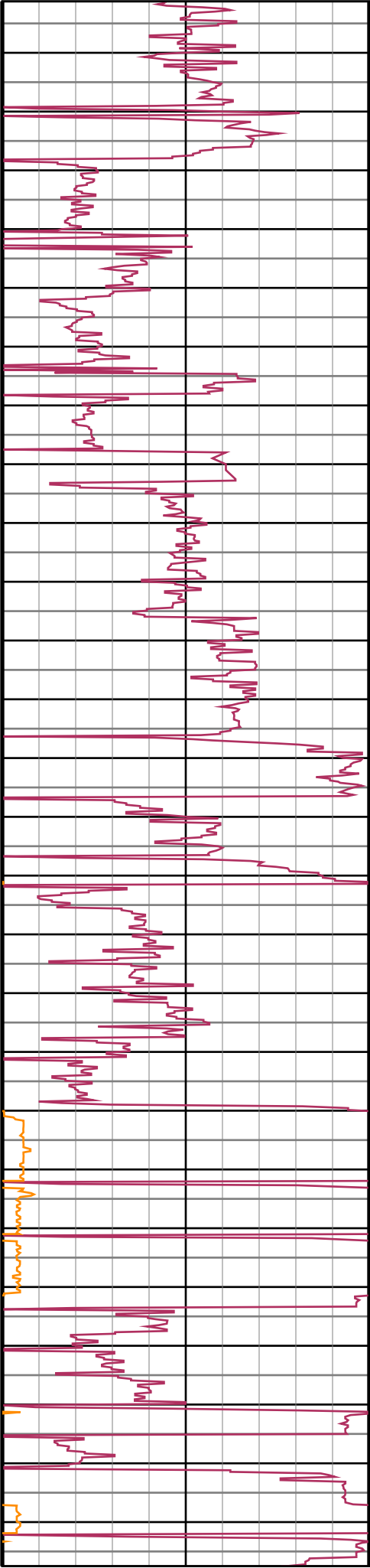
Gamma			
API			
0.0	_____	150.0	
150.0	_____	300.0	

ROP			
0			
0.0	_____	150.0	
150.0	_____	300.0	





5740
5760
5780
5800
5820
5840
5860
5880
5900
5920
5940
5960
5980
6000
6020
6040
6060
6080
6100
6120
6140
6160
6180
6200
6220
6240



#15 MD(5744.00) Inc(53.2) Azm(176.6) TVD(5679.72)
VS(61.62) NS(-56.56) EW(202.09)

#16 MD(5787.00) Inc(56.4) Azm(177.0) TVD(5704.51)
VS(96.74) NS(-91.64) EW(204.05)

#17 MD(5814.00) Inc(57.9) Azm(177.5) TVD(5719.15)
VS(119.41) NS(-114.29) EW(205.14)

#18 MD(5868.00) Inc(62.2) Azm(177.9) TVD(5746.10)
VS(166.19) NS(-161.03) EW(207.01)

#19 MD(5910.00) Inc(66.7) Azm(178.7) TVD(5764.21)
VS(204.07) NS(-198.90) EW(208.13)

#20 MD(5953.00) Inc(71.5) Azm(180.1) TVD(5779.55)
VS(244.22) NS(-239.06) EW(208.55)

#21 MD(5996.00) Inc(73.6) Azm(180.9) TVD(5792.44)
VS(285.22) NS(-280.07) EW(208.19)

#22 MD(6038.00) Inc(78.2) Azm(181.2) TVD(5802.67)
VS(325.90) NS(-320.79) EW(207.44)

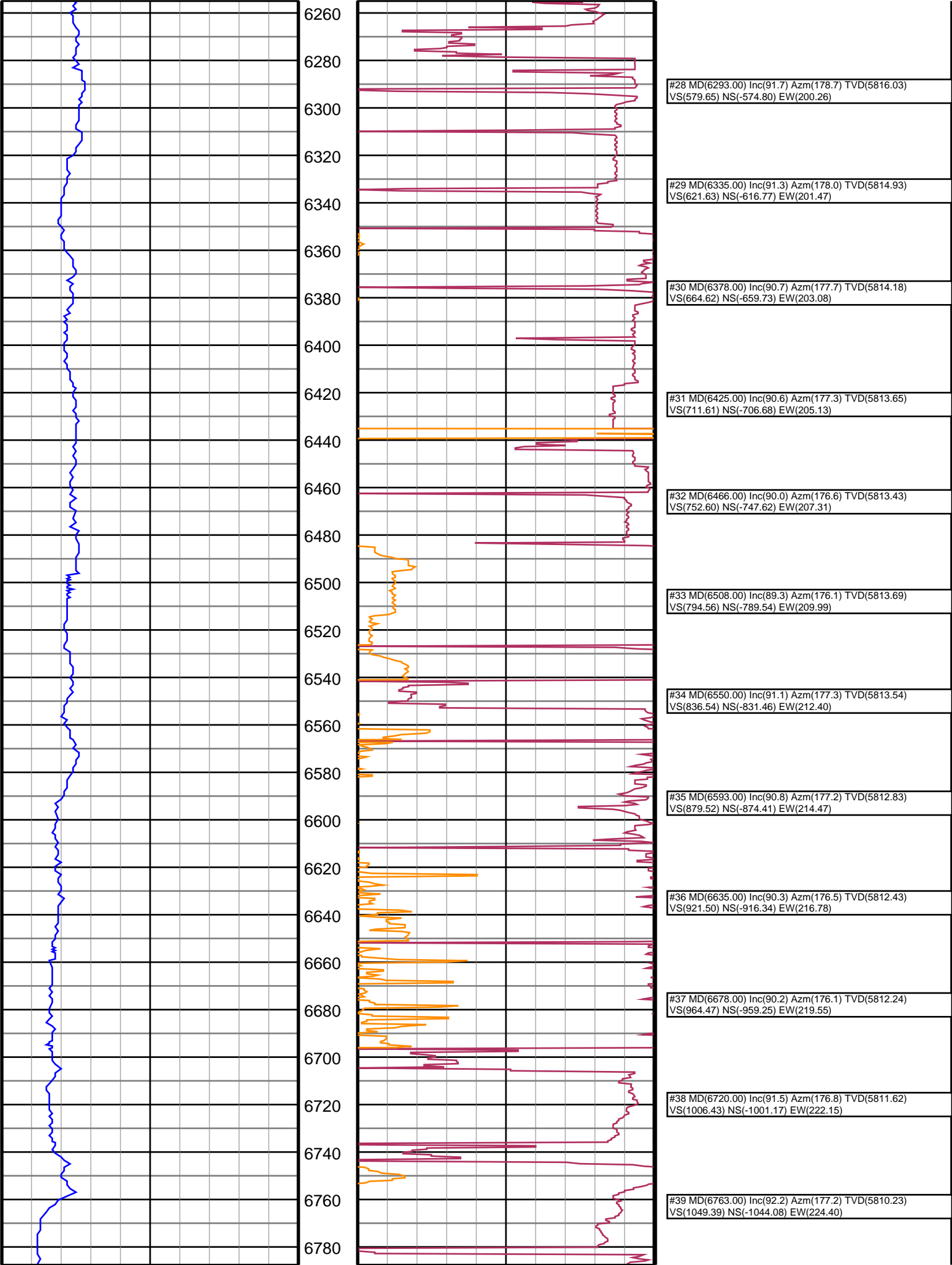
#23 MD(6081.00) Inc(84.2) Azm(183.0) TVD(5809.25)
VS(368.29) NS(-363.23) EW(205.88)

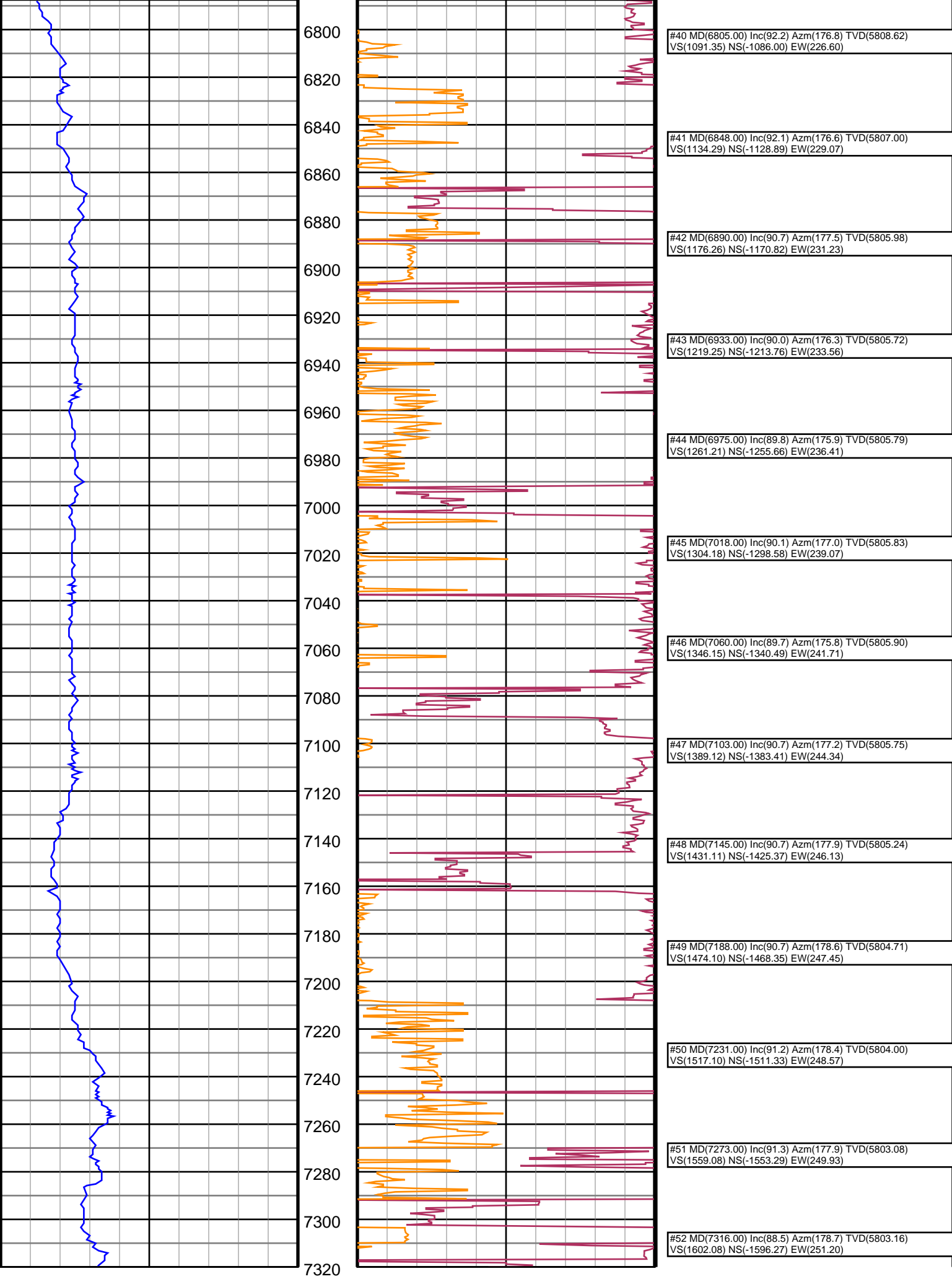
#24 MD(6123.00) Inc(85.7) Azm(182.6) TVD(5812.95)
VS(410.01) NS(-405.02) EW(203.83)

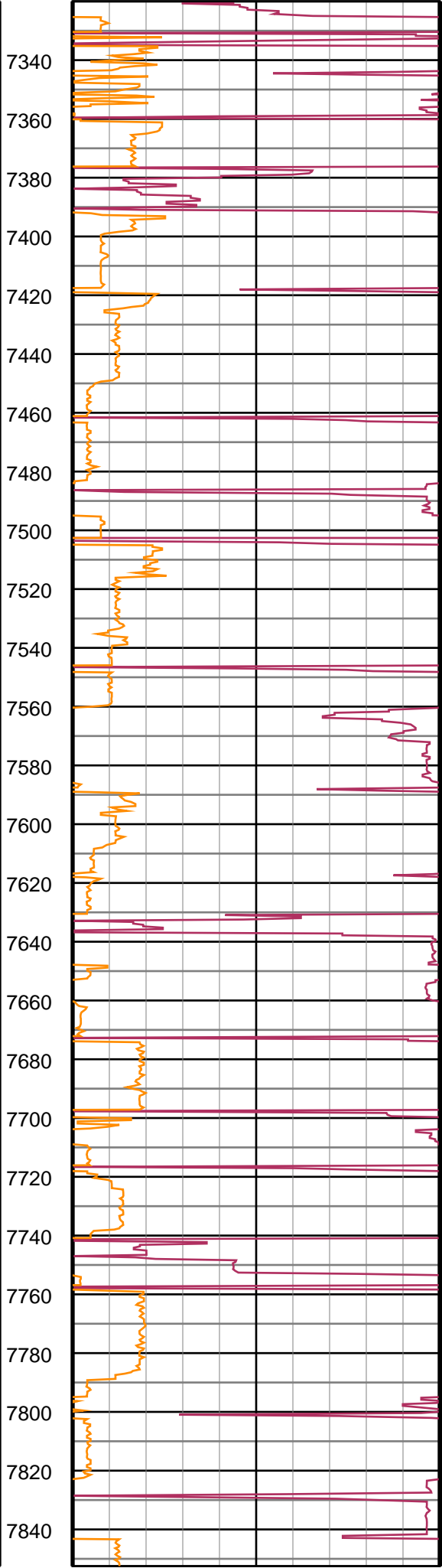
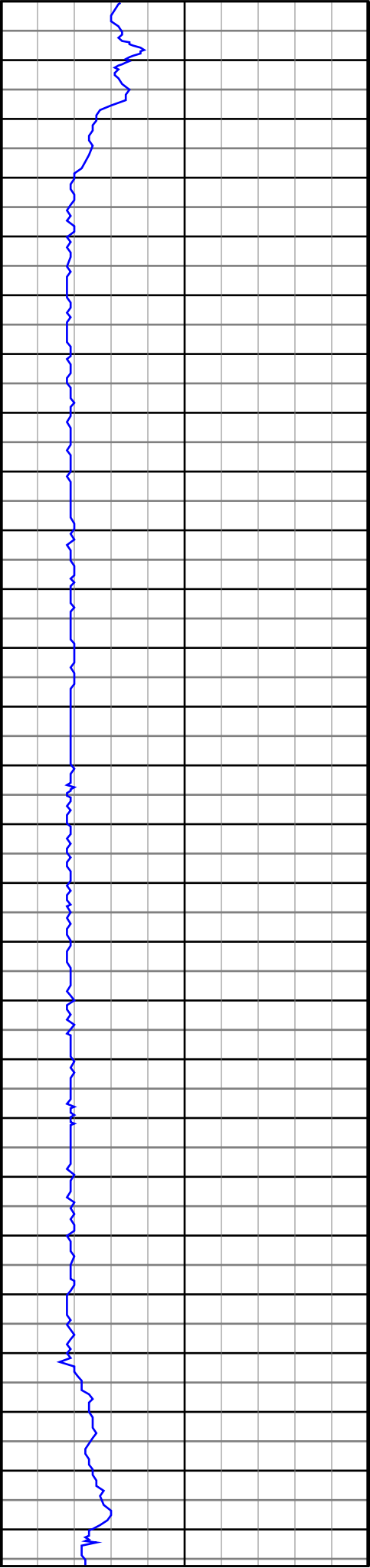
#25 MD(6165.00) Inc(86.1) Azm(182.3) TVD(5815.95)
VS(451.81) NS(-446.87) EW(202.04)

#26 MD(6208.00) Inc(90.1) Azm(181.2) TVD(5817.37)
VS(494.71) NS(-489.82) EW(200.73)

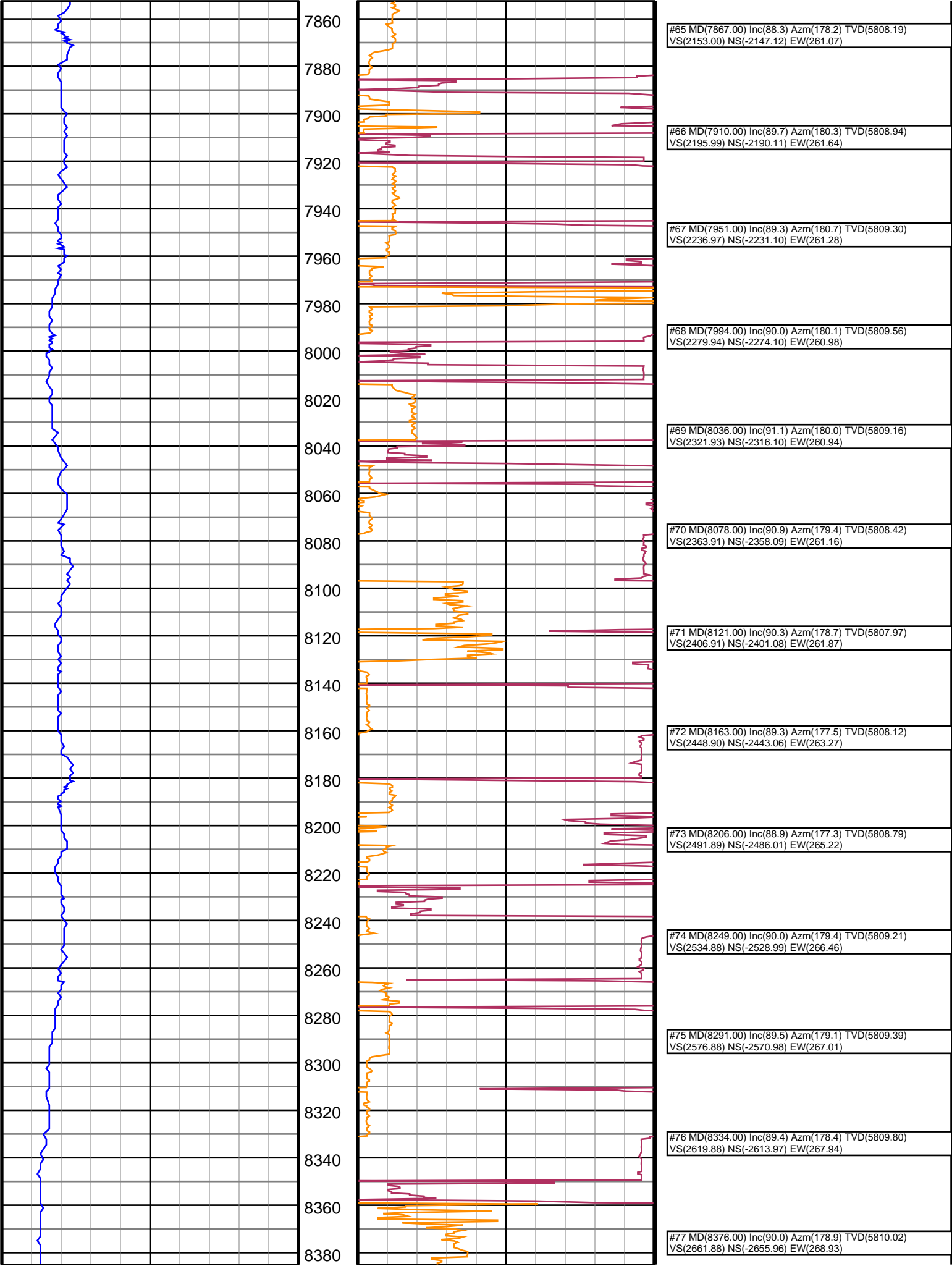
#27 MD(6250.00) Inc(90.9) Azm(180.7) TVD(5817.01)
VS(536.67) NS(-531.81) EW(200.04)

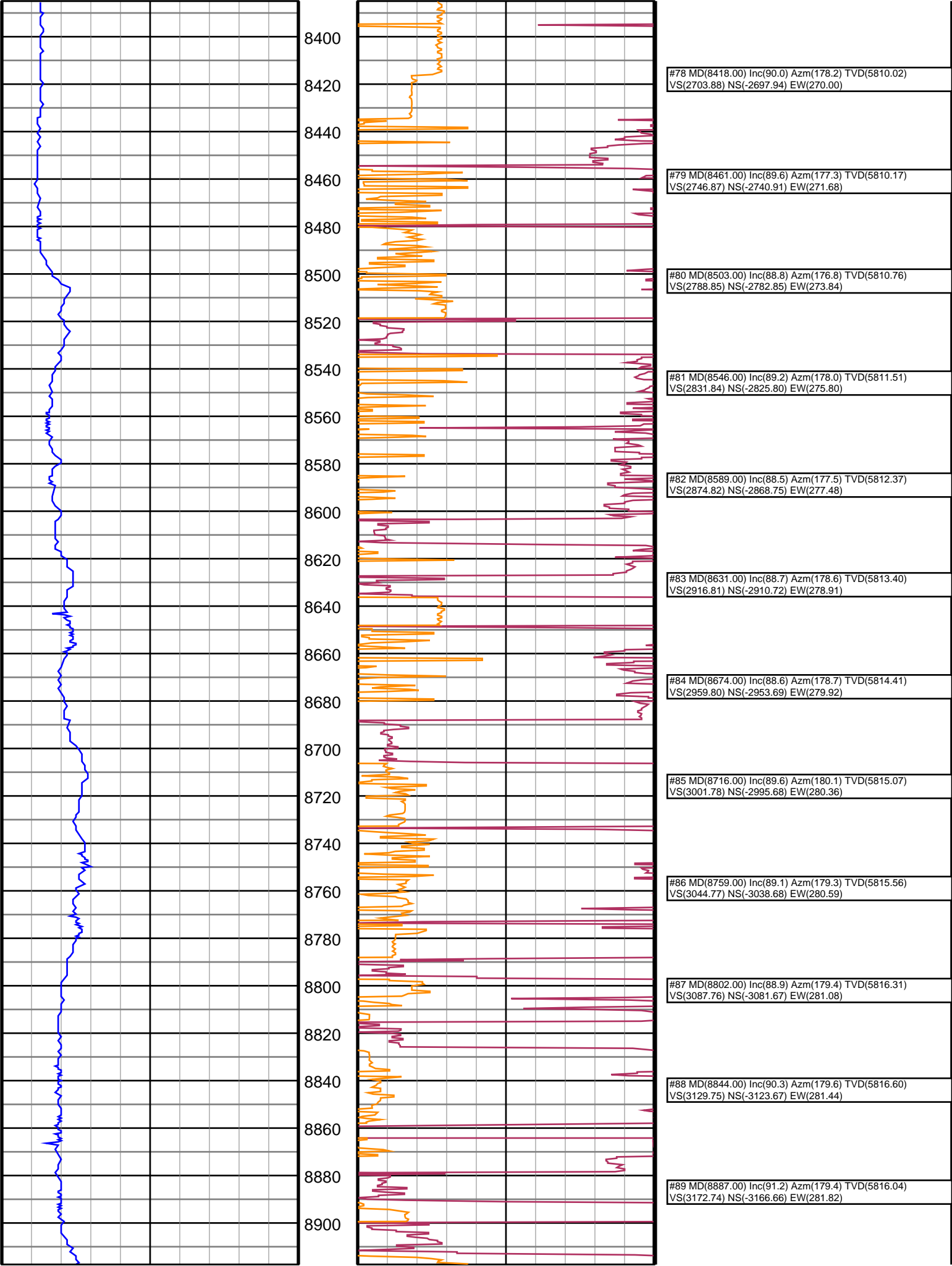


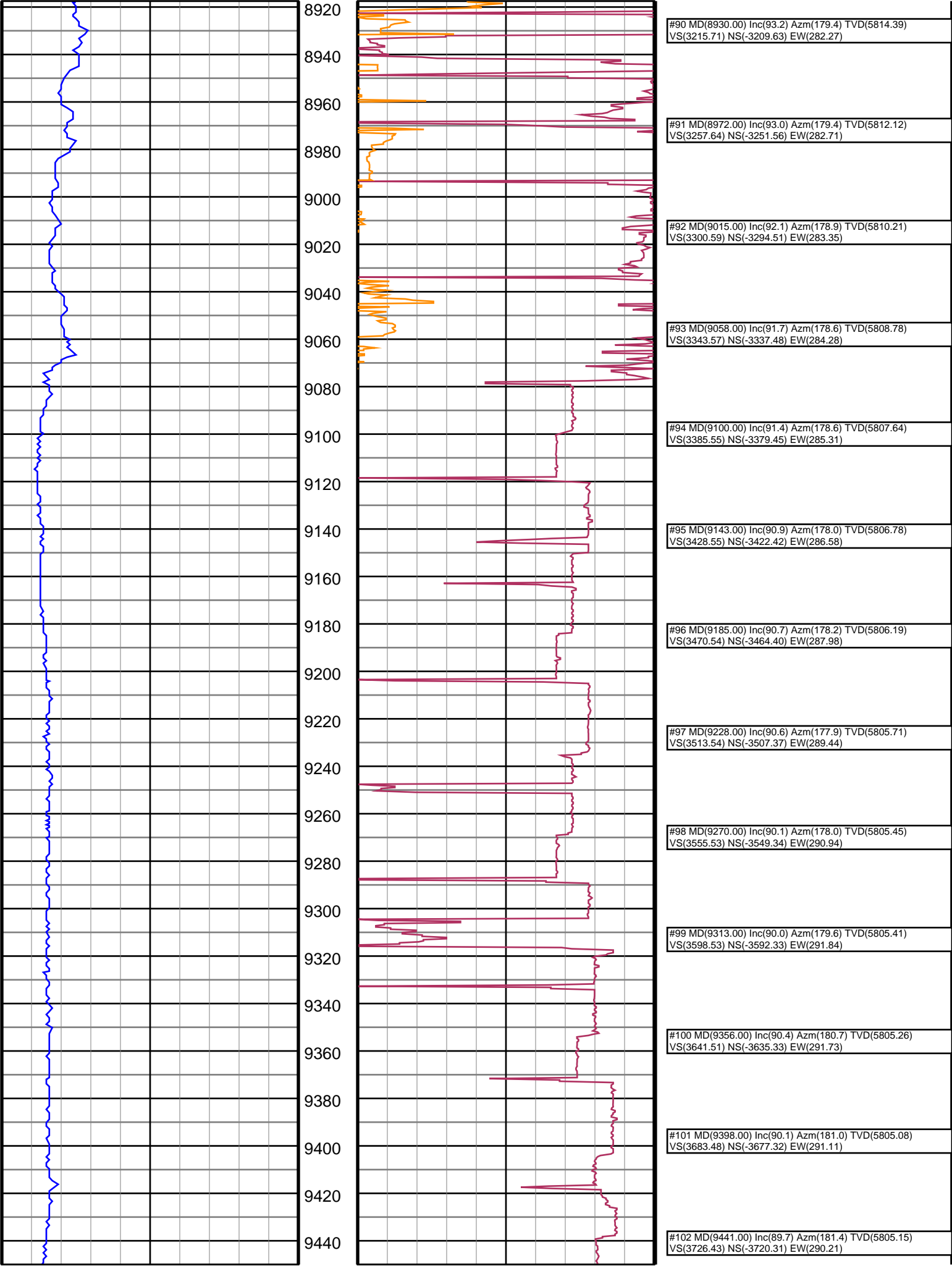


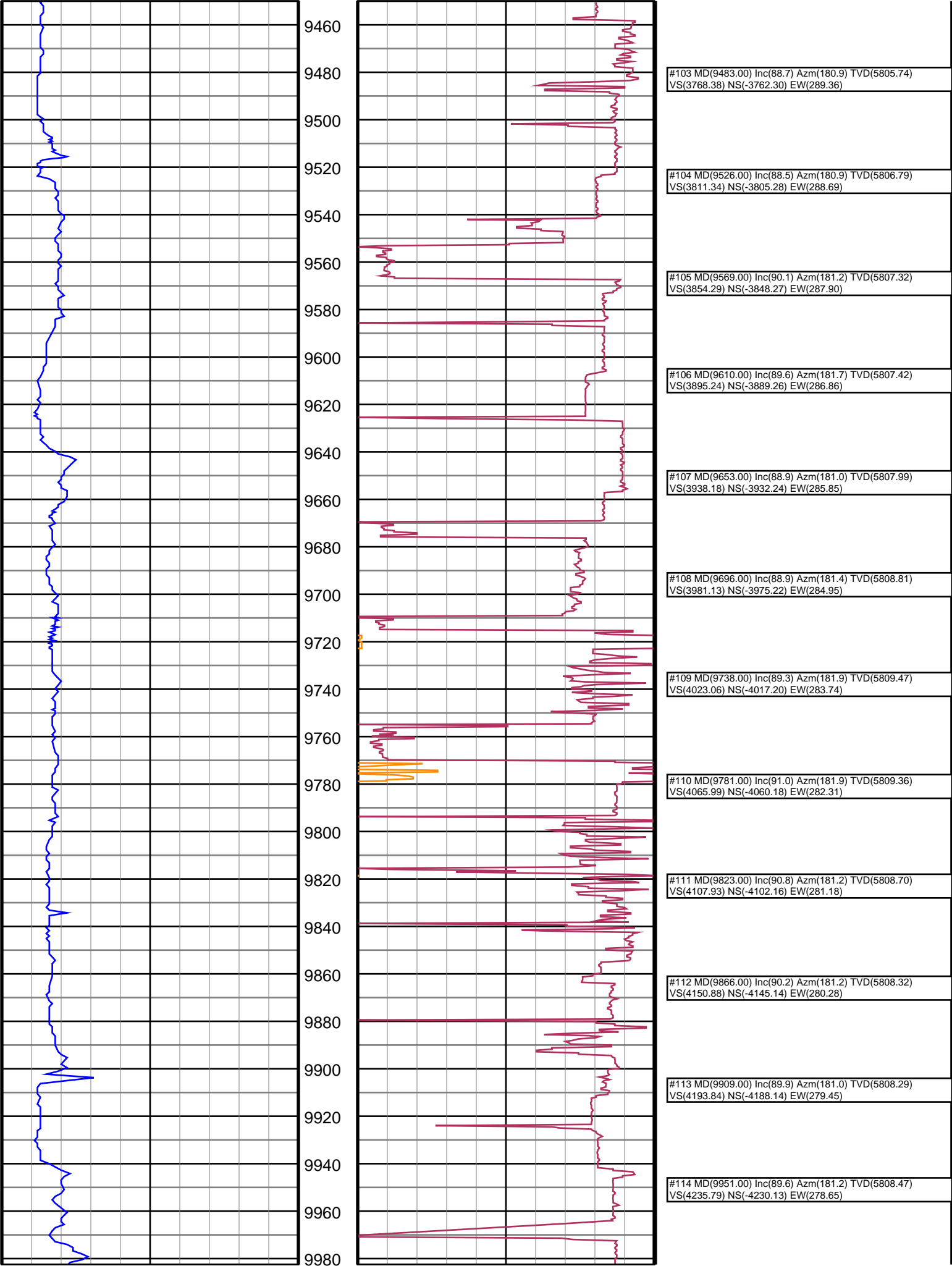


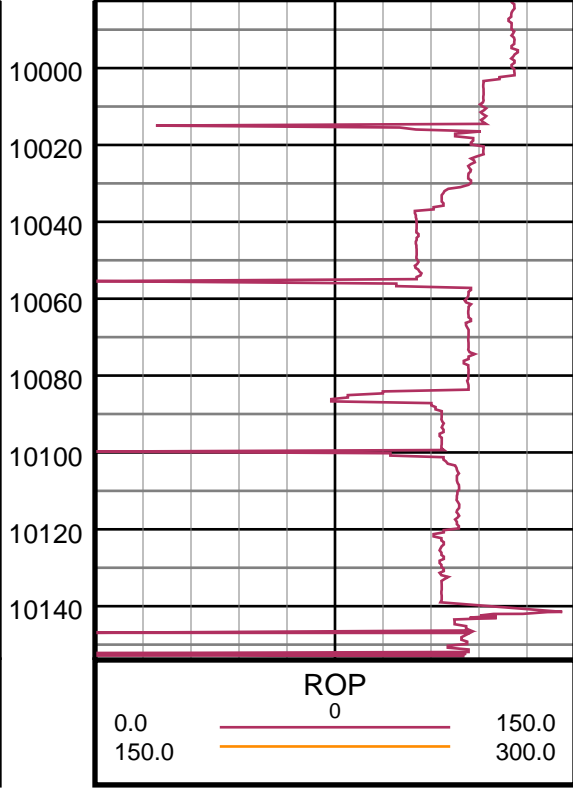
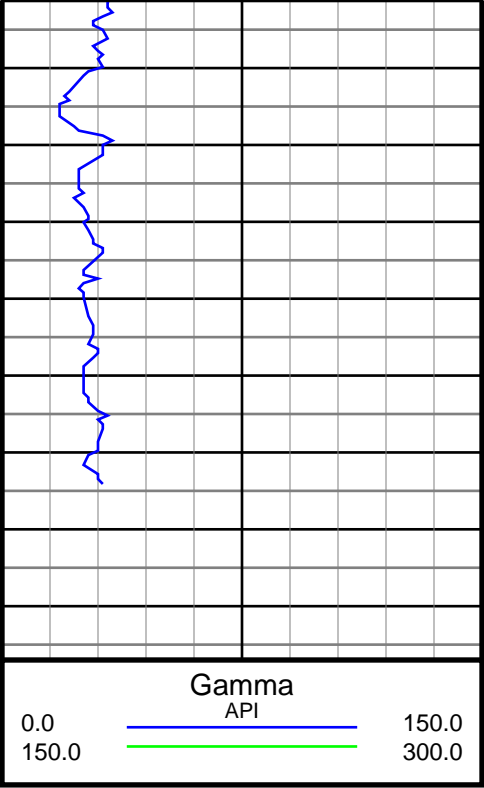
#53 MD(7358.00) Inc(88.4) Azm(178.7) TVD(5804.29) VS(1644.06) NS(-1638.24) EW(252.15)
#54 MD(7401.00) Inc(89.9) Azm(179.3) TVD(5804.93) VS(1687.06) NS(-1681.23) EW(252.90)
#55 MD(7442.00) Inc(89.8) Azm(179.1) TVD(5805.04) VS(1728.05) NS(-1722.23) EW(253.48)
#56 MD(7484.00) Inc(89.7) Azm(179.1) TVD(5805.22) VS(1770.05) NS(-1764.22) EW(254.14)
#57 MD(7526.00) Inc(90.0) Azm(179.3) TVD(5805.33) VS(1812.05) NS(-1806.22) EW(254.72)
#58 MD(7569.00) Inc(90.1) Azm(179.4) TVD(5805.29) VS(1855.04) NS(-1849.22) EW(255.21)
#59 MD(7612.00) Inc(90.2) Azm(179.6) TVD(5805.18) VS(1898.04) NS(-1892.21) EW(255.59)
#60 MD(7654.00) Inc(89.8) Azm(178.6) TVD(5805.18) VS(1940.04) NS(-1934.21) EW(256.25)
#61 MD(7697.00) Inc(89.7) Azm(178.9) TVD(5805.37) VS(1983.04) NS(-1977.20) EW(257.18)
#62 MD(7739.00) Inc(89.5) Azm(179.1) TVD(5805.66) VS(2025.03) NS(-2019.19) EW(257.92)
#63 MD(7782.00) Inc(89.0) Azm(178.9) TVD(5806.23) VS(2068.03) NS(-2062.18) EW(258.67)
#64 MD(7825.00) Inc(88.7) Azm(178.2) TVD(5807.09) VS(2111.02) NS(-2105.16) EW(259.76)











#115 MD(9994.00) Inc(89.0) Azm(181.0) TVD(5809.00)
VS(4278.75) NS(-4273.12) EW(277.82)

#116 MD(10037.00) Inc(88.6) Azm(180.5) TVD(5809.90)
VS(4321.71) NS(-4316.10) EW(277.26)

#117 MD(10079.00) Inc(88.2) Azm(180.5) TVD(5811.07)
VS(4363.67) NS(-4358.08) EW(276.89)

#118 MD(10092.00) Inc(88.3) Azm(180.9) TVD(5811.47)
VS(4376.65) NS(-4371.08) EW(276.73)

#119 MD(10153.00) Inc(88.3) Azm(180.9) TVD(5813.28)
VS(4437.57) NS(-4432.04) EW(275.78)