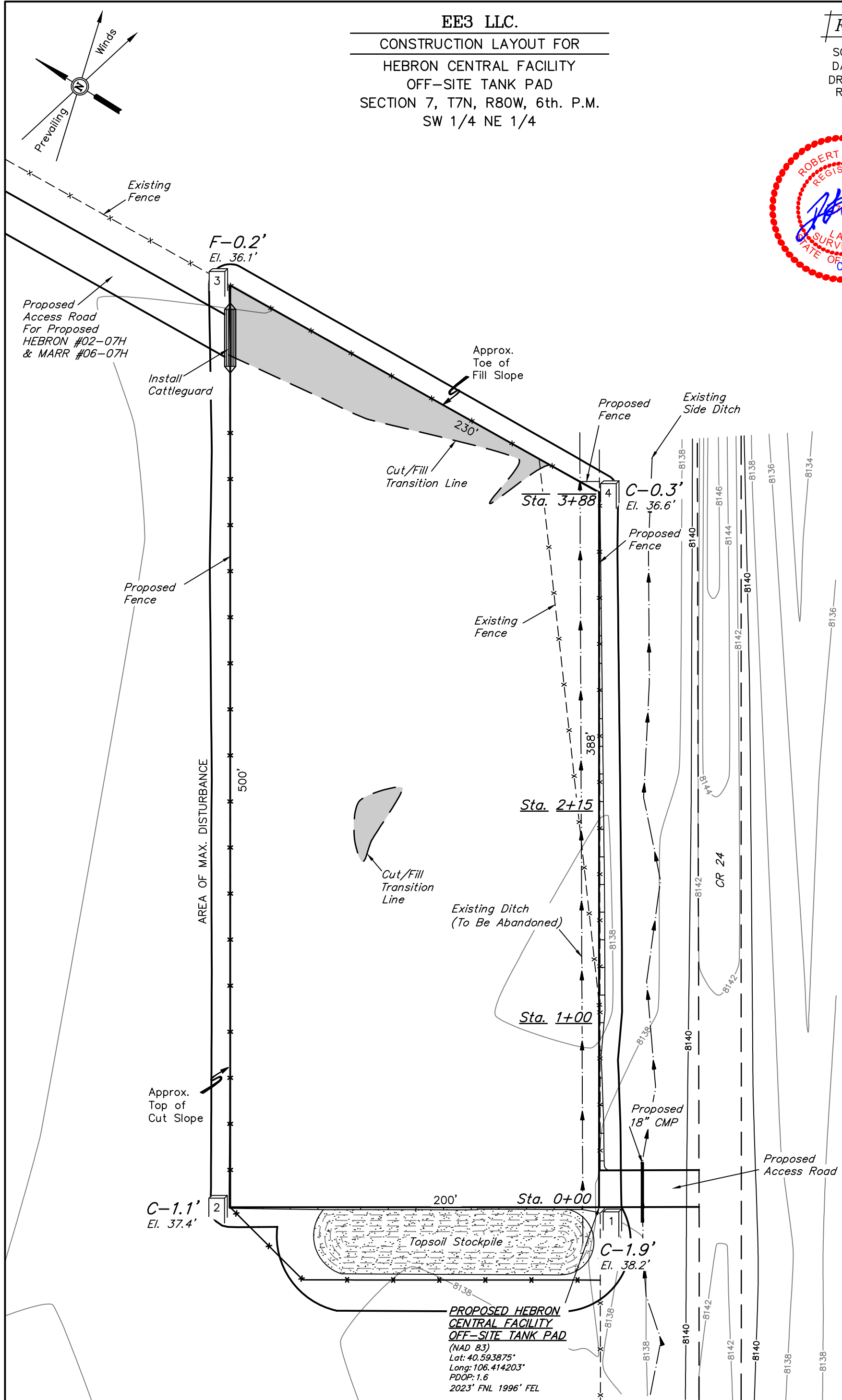


CONSTRUCTION LAYOUT FOR
HEBRON CENTRAL FACILITY
OFF-SITE TANK PAD
SECTION 7, T7N, R80W, 6th. P.M.
SW 1/4 NE 1/4

SCALE: 1" = 50'
DATE: 05-10-13
DRAWN BY: H.K.W.
REV: 06-13-13

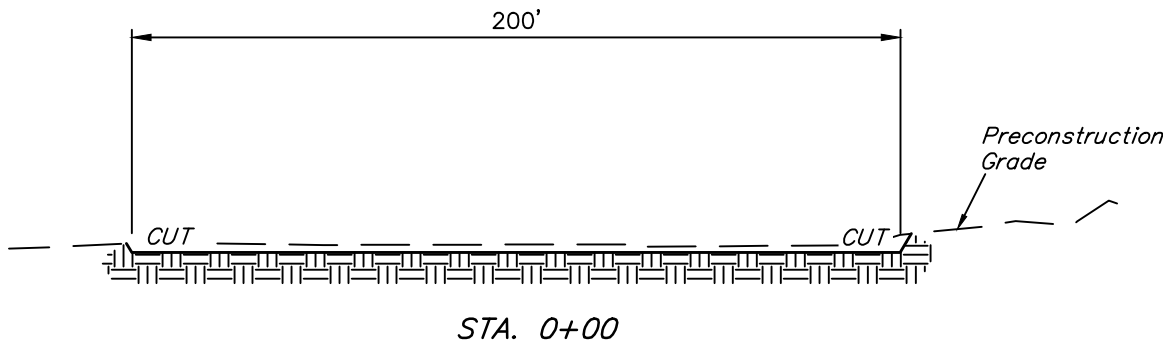
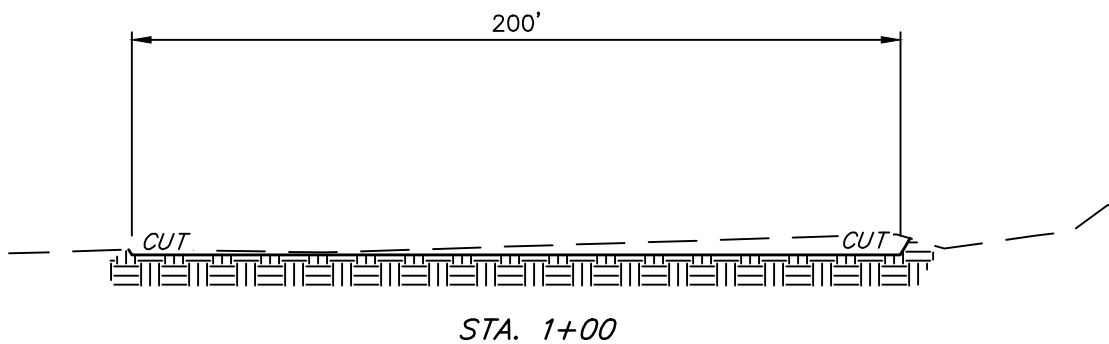
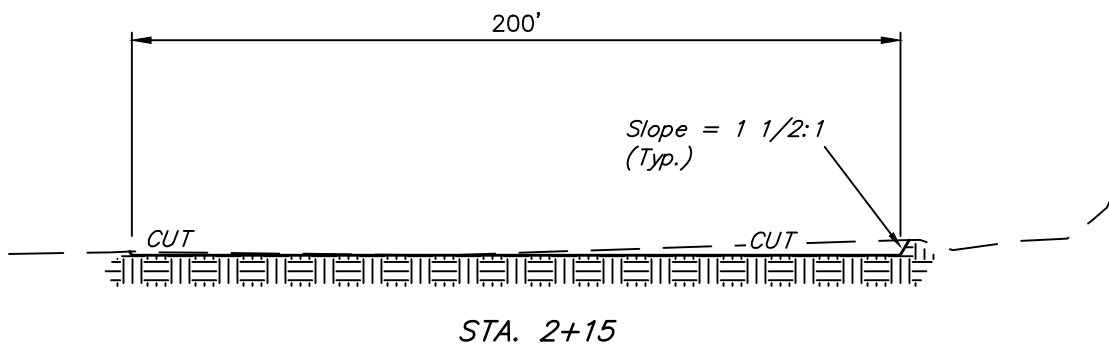
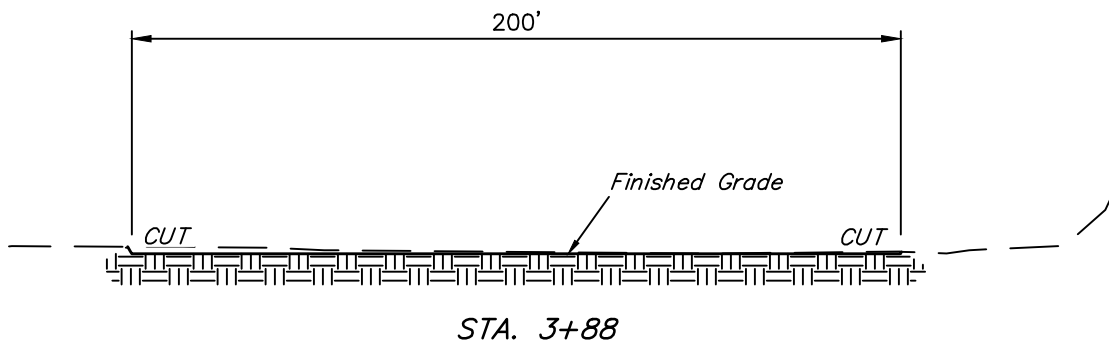


UINTAH ENGINEERING & LAND SURVEYING
85 So. 200 East * Vernal, Utah 84078 * (435) 789-1017

1" = 20'
X-Section
Scale
1" = 50'
DATE: 05-10-13
DRAWN BY: H.K.W.
REV: 06-13-13

EE3 LLC.
CONSTRUCTION LAYOUT CROSS SECTIONS FOR
HEBRON CENTRAL FACILITY
OFF-SITE TANK PAD
SECTION 7, T7N, R80W, 6th. P.M.
SW 1/4 NE 1/4

FIGURE #2



* NOTE:
FILL QUANTITY INCLUDES
5% FOR COMPACTION

APPROXIMATE YARDAGES			APPROXIMATE ACREAGE		
(6") Topsoil Stripping	=	1,670 Cu. Yds.	EXCESS MATERIAL	=	1,670 Cu. Yds.
Remaining Location	=	630 Cu. Yds.	Topsoil	=	1,670 Cu. Yds.
TOTAL CUT	=	2,300 CU. YDS.	EXCESS UNBALANCE	=	0 Cu. Yds.
FILL	=	630 CU. YDS.	(After Interim Rehabilitation)		
			TANK PAD SITE DISTURBANCE = ± 2.565 ACRES		
			ACCESS ROAD DISTURBANCE = ± 0.050 ACRES		
			TOTAL = ± 2.615 ACRES		
			UINTAH ENGINEERING & LAND SURVEYING		
			85 So. 200 East * Vernal, Utah 84078 * (435) 789-1017		