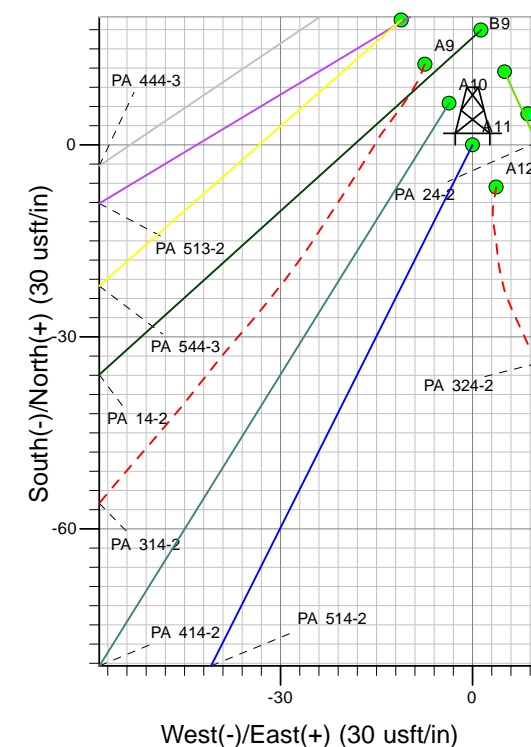
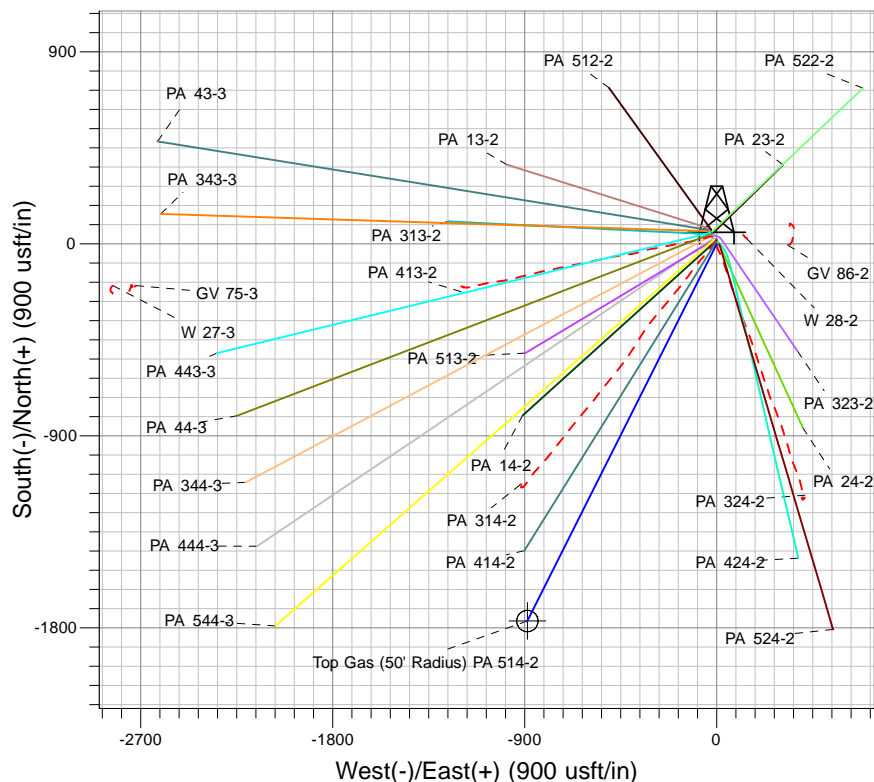
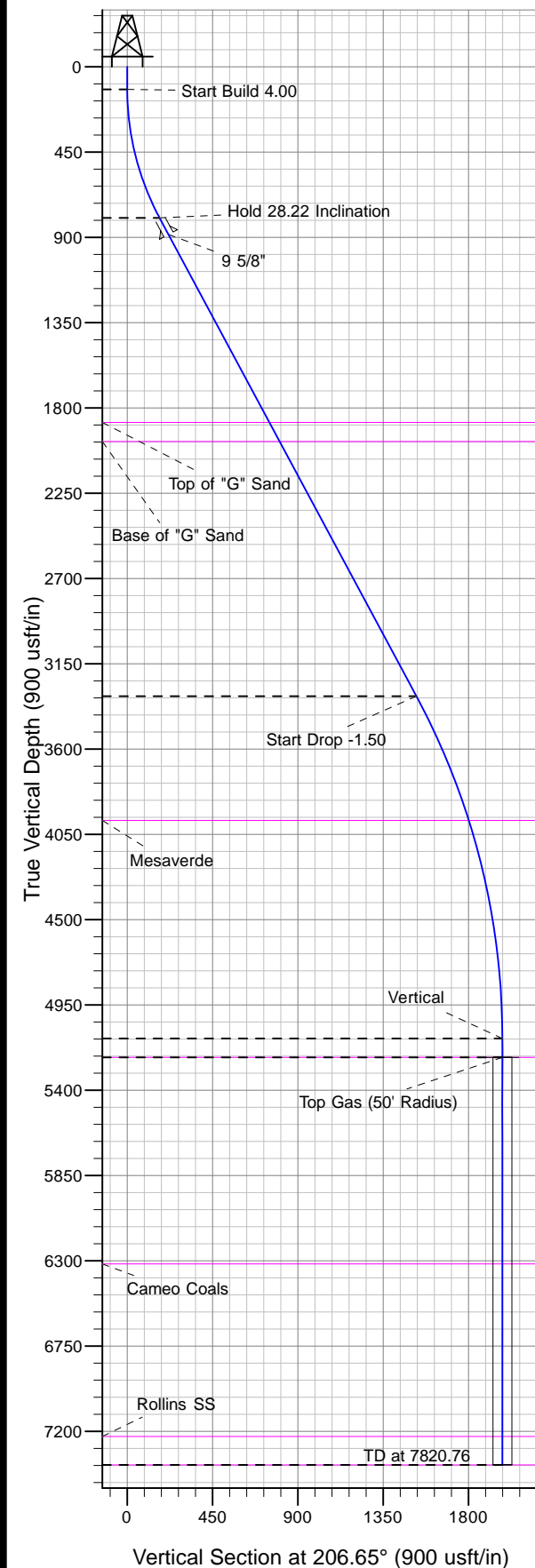




Well Name: PA 514-2
Surface Location: GV 86-2 Pad
North American Datum 1983 , US State Plane 1983, Colorado Central Zone
Ground Elevation: 5821.00

+N/-S	+E/-W	Northing	Easting	Latitude	Longitude	Slot
0.00	0.00	1603722.40	2302949.60	39.46498	-107.96927	A11

KELLY BUSHING @ 5847.00usft (Nabors 577 (26' RKB) kjs)



Project: PA 02-07S-095W
Site: GV 86-2 Pad
Well: PA 514-2
Plan #2 12Feb13 kjs



Azimuths to True North
Magnetic North: 10.78°
Magnetic Field
Strength: 52623.9snT
Dip Angle: 65.82°
Date: 11/1/2007
Model: IGRF2005-10

ANNOTATIONS

MD	Inc	Azi	TVD	+N/-S	+E/-W	Vsect	Departure	Annotation
120.00	0.00	0.00	120.00	0.00	0.00	0.00	0.00	Start Build 4.00
825.53	28.22	206.65	797.34	-152.18	-76.37	170.27	170.27	Hold 28.22 Inclination
3689.36	28.22	206.65	3320.75	-1362.55	-683.79	1524.50	1524.50	Start Drop -1.50
5570.76	0.00	0.00	5127.00	-1768.36	-887.45	1978.55	1978.55	Vertical
5670.76	0.00	0.00	5227.00	-1768.36	-887.45	1978.55	1978.55	Top Gas
7820.76	0.00	0.00	7377.00	-1768.36	-887.45	1978.55	1978.55	TD at 7820.76