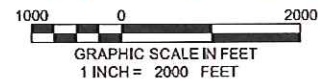
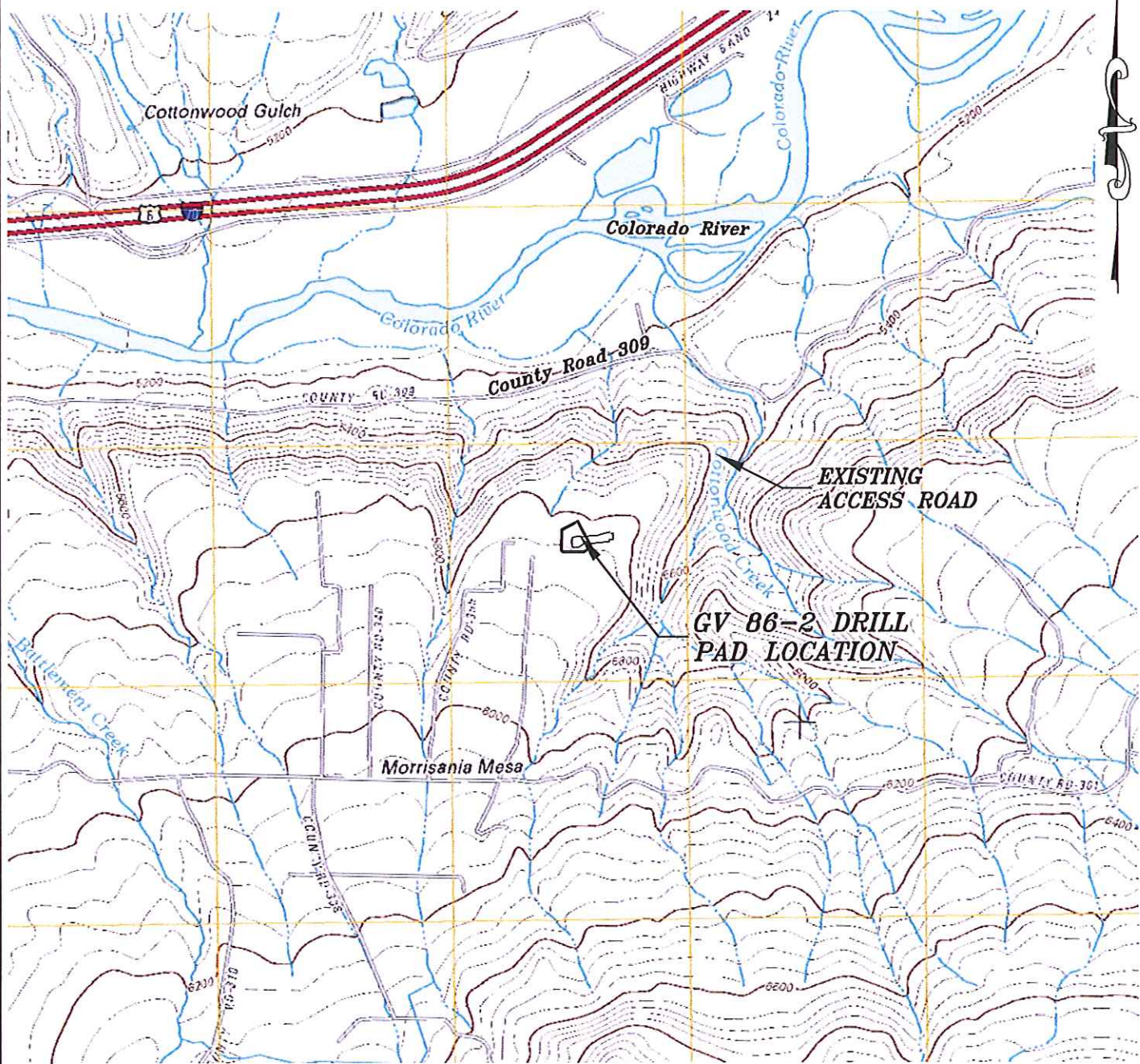


Section 2
T. 7 S., R. 95 W.



ACCESS DESCRIPTION:
FROM THE INTERSECTION OF STATE HIGHWAY 6 AND COUNTY ROAD 323 (RULISON ROAD) NORTH OF RULISON, PROCEED SOUTHERLY ALONG COUNTY ROAD 323 (RULISON ROAD) ± 1.1 MILES TO THE INTERSECTION WITH COUNTY ROAD 309 (RULISON PARACHUTE ROAD), CONTINUE STRAIGHT AND THEN RIGHT IN A WESTERLY DIRECTION ± 1.9 MILES TO AN INTERSECTION WITH A DIRT/GRAVEL ROAD, PROCEED LEFT IN A SOUTHERLY DIRECTION ± 1.9 MILES TO THE EXISTING GV 86-2 DRILL PAD LOCATION, AS SHOWN HEREON.

REVISED: 4/23/13

136 East Third Street
Rifle, Colorado 81650
Ph. (970) 625-2720
Fax (970) 625-2773



BOOKCLIFF
Survey Services, Inc.

SCALE: 1" = 2000'
DATE: 3/19/13
PLAT: 5 of 7
PROJECT: Valley
DFT: cws

Construction Plan Prepared for:
WPXENERGY WPX Energy Rocky Mountain, LLC

GV 86-2 Drill Pad - Plat 5
ACCESS ROAD & TOPO MAP