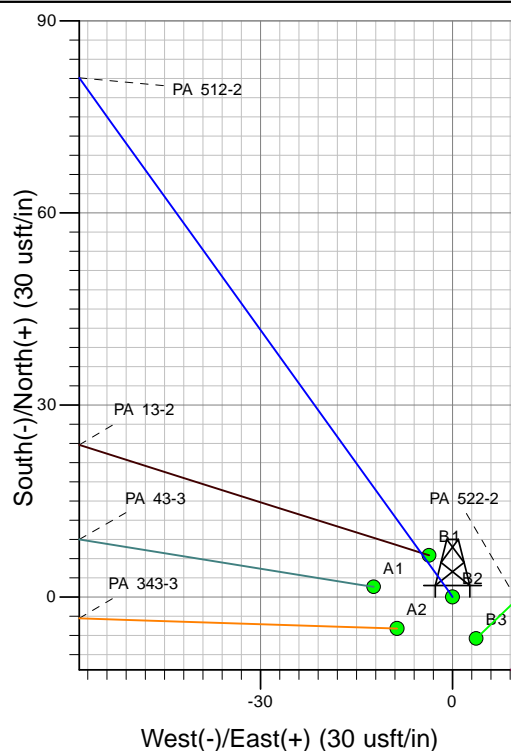
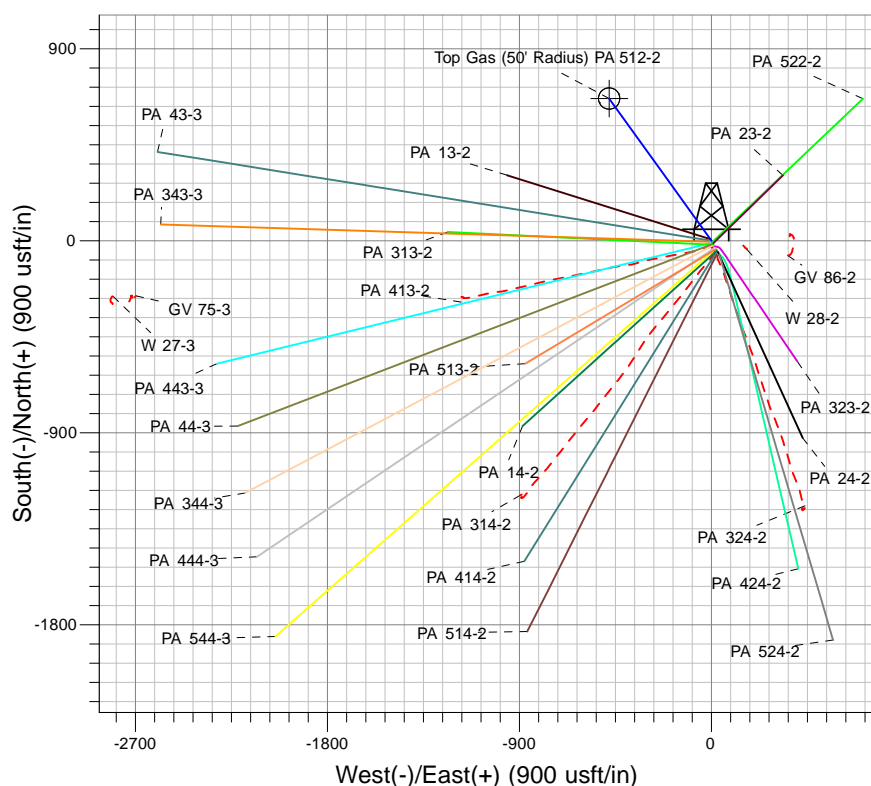
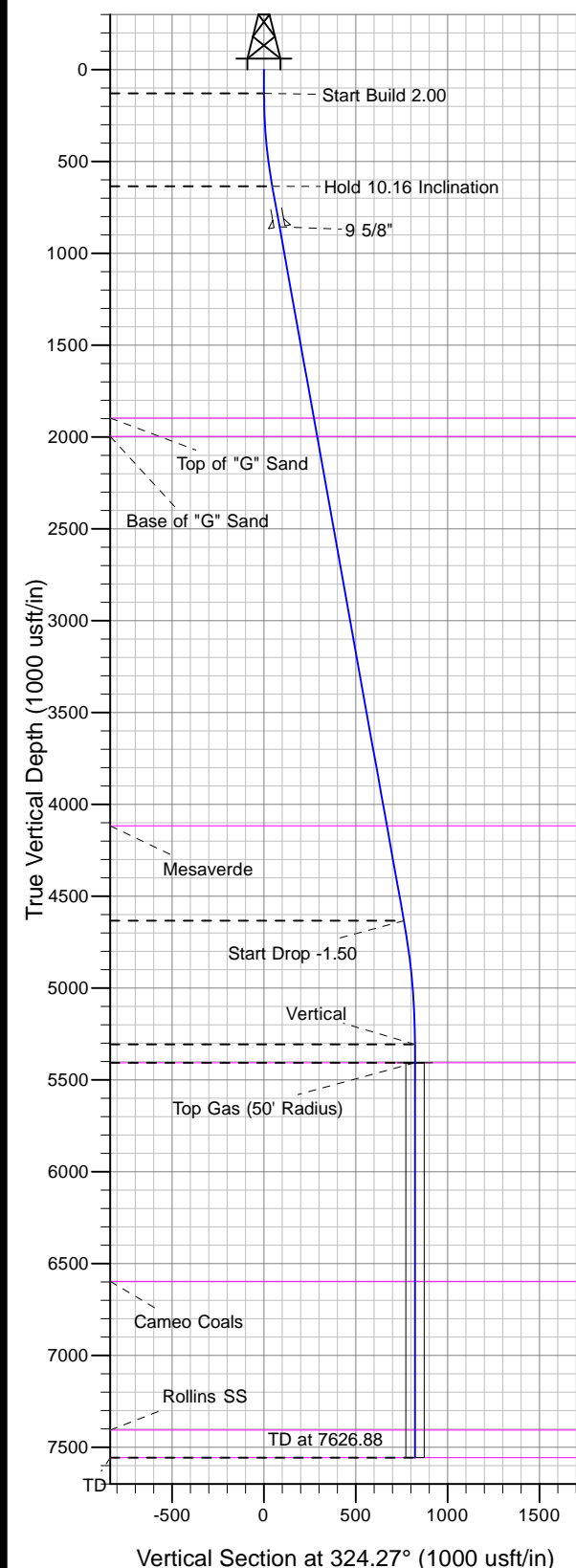




Well Name: PA 512-2
Surface Location: GV 86-2 Pad
North American Datum 1983 , US State Plane 1983, Colorado Central Zone
Ground Elevation: 5821.00
+N/-S +E/-W Northing Easting Latitude Longitude Slot
0.00 0.00 1603786.70 2302926.80 39.46516 -107.96936 B2
KELLY BUSHING @ 5847.00usft (Nabors 577 (26' RKB) kjs)



Project: PA 02-07S-095W
Site: GV 86-2 Pad
Well: PA 512-2
Plan #2 12Feb13 kjs



Azimuths to True North
Magnetic North: 10.78°
Magnetic Field
Strength: 52624.2snT
Dip Angle: 65.82°
Date: 10/31/2007
Model: IGRF2005-10

ANNOTATIONS

MD	Inc	Azi	TVD	+N/-S	+E/-W	Vsect	Departure	Annotation
130.00	0.00	0.00	130.00	0.00	0.00	0.00	0.00	Start Build 2.00
637.94	10.16	324.27	635.28	36.46	-26.23	44.91	44.91	Hold 10.16 Inclination
4699.62	10.16	324.27	4633.29	618.00	-444.59	761.30	761.30	Start Drop -1.50
5376.88	0.00	0.00	5307.00	666.61	-479.56	821.18	821.18	Vertical
5476.88	0.00	0.00	5407.00	666.61	-479.56	821.18	821.18	Top Gas
7626.88	0.00	0.00	7557.00	666.61	-479.56	821.18	821.18	TD at 7626.88