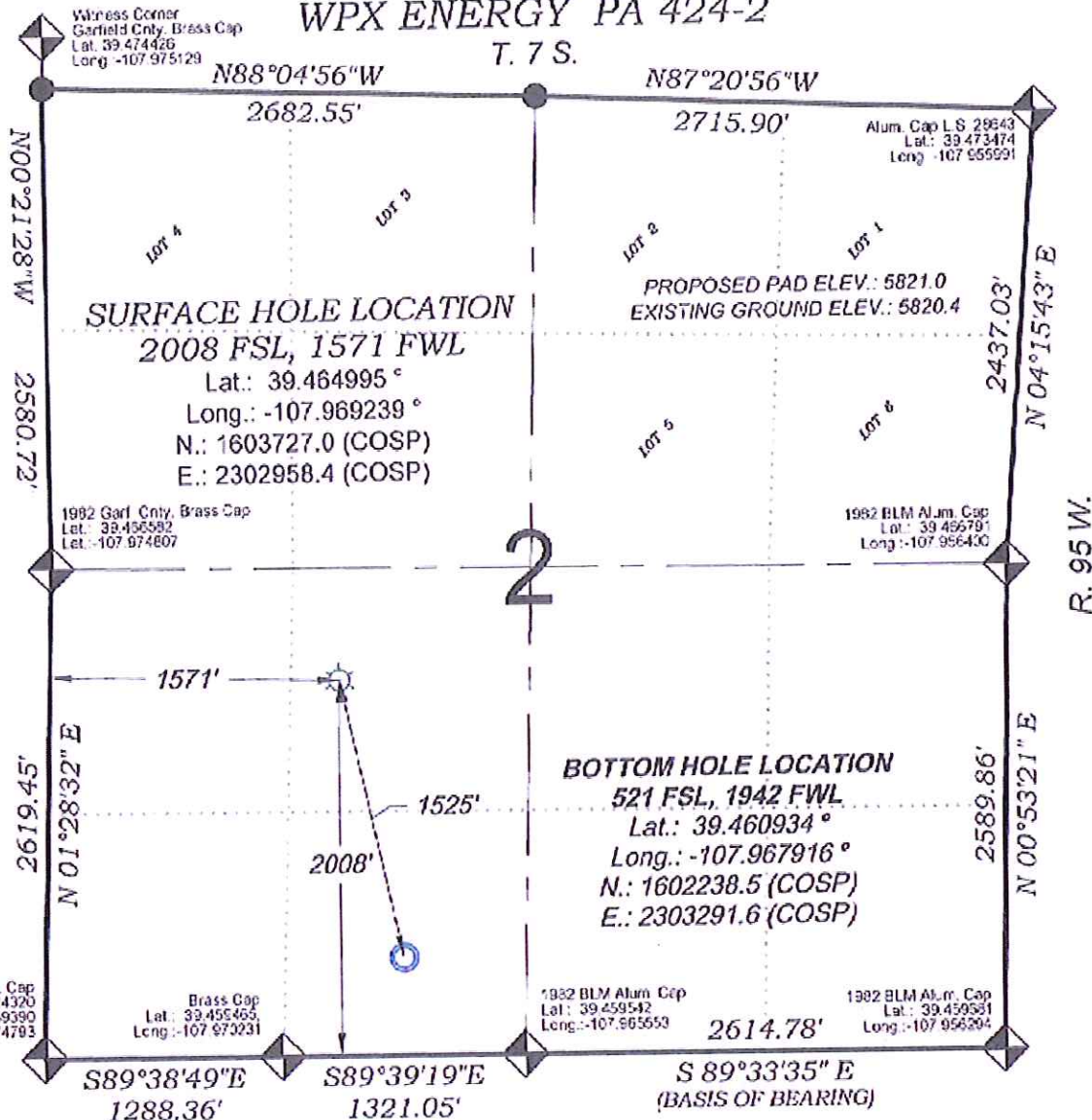
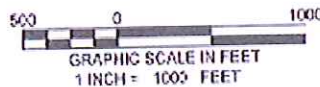


WPX ENERGY PA 424-2

T. 7 S.



SEE CONSTRUCTION LAYOUT
 PLAT FOR VISIBLE IMPROVEMENTS
 WITHIN 400' OF THIS LOCATION



- LEGEND -

FIELD LOCATED SECTION
 MONUMENTS AS DESCRIBED

FIELD SURVEYED
 WELL LOCATION

CALCULATED BOTTOM
 HOLE LOCATION

CALCULATED SECTION
 CORNER LOCATION

SURVEYORS STATEMENT

I, MICHAEL J. LANGHORNE, A REGISTERED LAND SURVEYOR IN THE
 STATE OF COLORADO DO HEREBY CERTIFY THAT THE SURVEY SHOWN
 HEREON WAS PREPARED UNDER MY DIRECT SUPERVISION AND HAS
 BEEN STAKED ON THE GROUND AS SHOWN ON THE PLAT AND
 CHECKING THAT THIS MAP IS A TRUE REPRESENTATION THEREOF.

MICHAEL J. LANGHORNE, COLORADO REGISTRATION NO. 36572
 FOR AND ON BEHALF OF
 BOOKCLIFF SURVEY SERVICES, INC.

REFERENCES

- 1) DEPARTMENT RESURVEY T. 7 S., R. 95 W., 6 TH. P.M. GLO PLAT
- 2) U.S.G.S. QUAD: RULISON, CO

NOTES

- 1) ELEVATIONS BASED ON N.A. V.D. 1988 PUBLISHED COORDINATES.
- 2) LATITUDES AND LONGITUDES ARE BASED ON NAD 83, PUBLISHED COORDINATES
- 3) STATE PLANE COORDINATES ARE BASED ON COLORADO CENTRAL ZONE, U.S. SURVEY FEET.
- 4) ELEVATION MASK SET TO 15'
- 5) GPS OPERATOR J. KIRKPATRICK, OBSERVED A PDOP 3.4 ON SURVEY POINT NUMBER 544.
- 6) SURFACE AND BOTTOM HOLE LOCATIONS ARE MEASURED 90° FROM SECTION LINES.

WELL LOCATION PLAT Prepared for:
 WPX ENERGY WPX Energy Rocky Mountain, LLC

136 East Third Street
 Rifle, Colorado
 81550 Ph. (970)
 625-2720 Fax (970)
 625-2773

BOOKCLIFF
 Survey Services, Inc.

SURVEY DATE:	3/12/13
MAP DATE:	3/18/13
SCALE:	1" = 1600'
PLAT:	1 of 1
PROJECT:	Valley

NE1/4 SW1/4, SECTION 2
 T. 7 S., R. 95 W. of the 6th. P.M.
 GARFIELD COUNTY, COLORADO