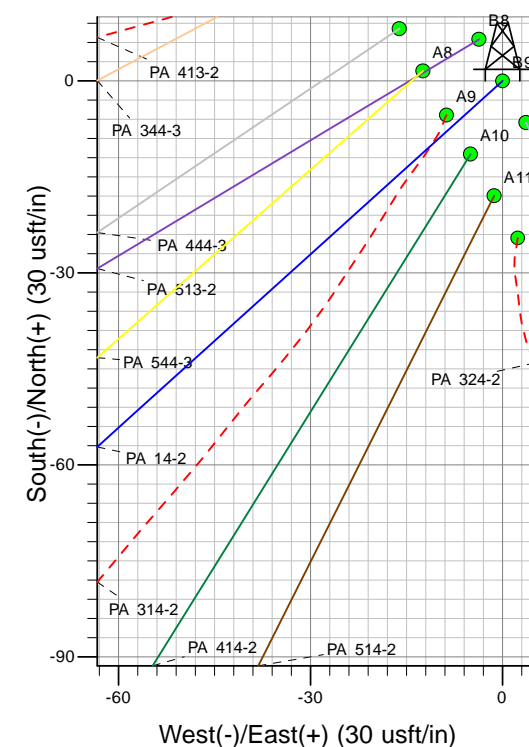
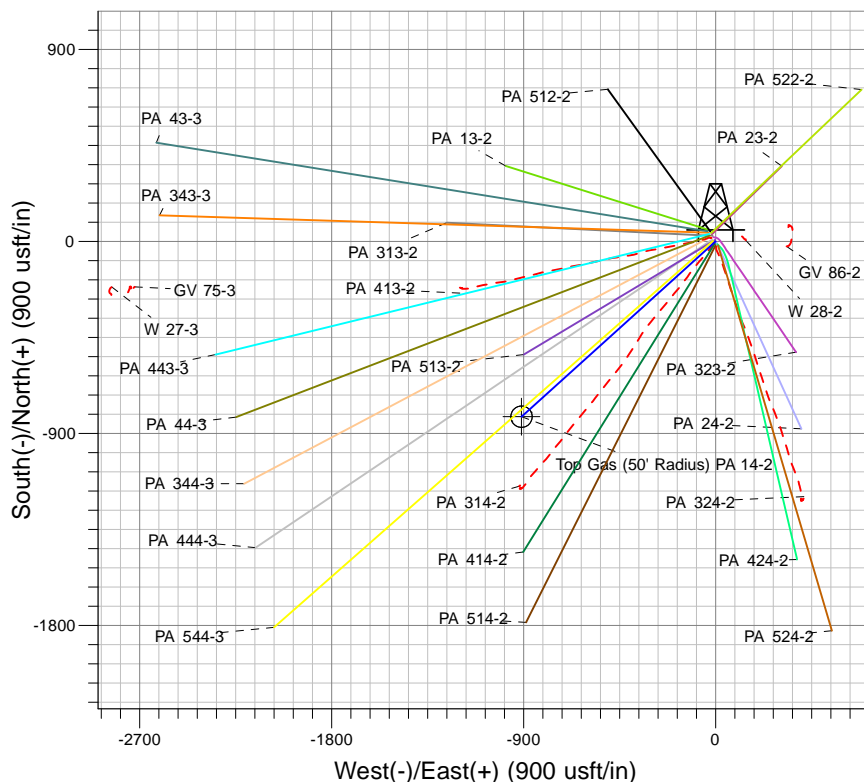
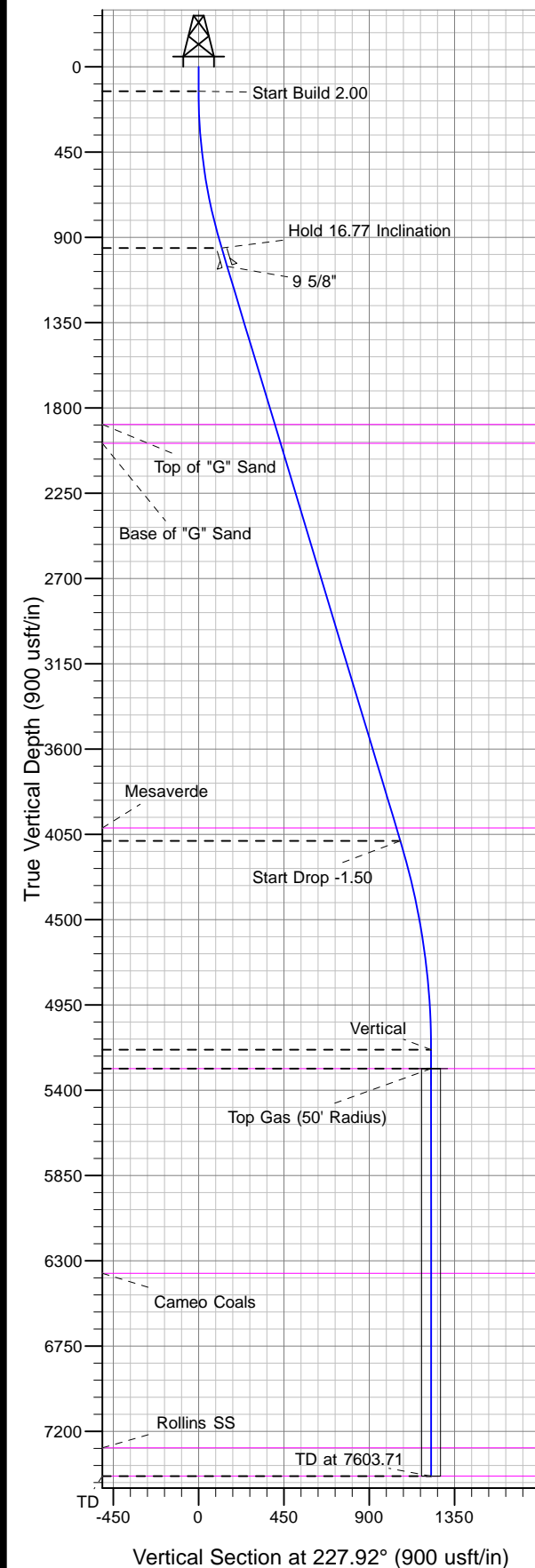




Well Name: PA 14-2  
Surface Location: GV 86-2 Pad  
North American Datum 1983 , US State Plane 1983, Colorado Central Zone  
Ground Elevation: 5821.00

+N/-S	+E/-W	Northing	Easting	Latitude	Longitude	Slot
0.00	0.00	1603740.30	2302951.40	39.46503	-107.96927	B9

KELLY BUSHING @ 5847.00usft (Nabors 577 (26' RKB) kjs)



Project: PA 02-07S-095W  
Site: GV 86-2 Pad  
Well: PA 14-2  
Plan #2 12Feb13 kjs



Azimuths to True North  
Magnetic North: 10.78°  
Magnetic Field  
Strength: 52623.9snT  
Dip Angle: 65.82°  
Date: 11/1/2007  
Model: IGRF2005-10

#### ANNOTATIONS

MD	Inc	Azi	TVD	+N/-S	+E/-W	Vsect	Departure	Annotation
130.00	0.00	0.00	130.00	0.00	0.00	0.00	0.00	Start Build 2.00
968.34	16.77	227.92	956.42	-81.62	-90.39	121.79	121.79	Hold 16.77 Inclination
4235.93	16.77	227.92	4085.10	-713.34	-790.02	1064.41	1064.41	Start Drop -1.50
5353.71	0.00	0.00	5187.00	-822.16	-910.54	1226.80	1226.80	Vertical
5453.71	0.00	0.00	5287.00	-822.16	-910.54	1226.80	1226.80	Top Gas
7603.71	0.00	0.00	7437.00	-822.16	-910.54	1226.80	1226.80	TD at 7603.71