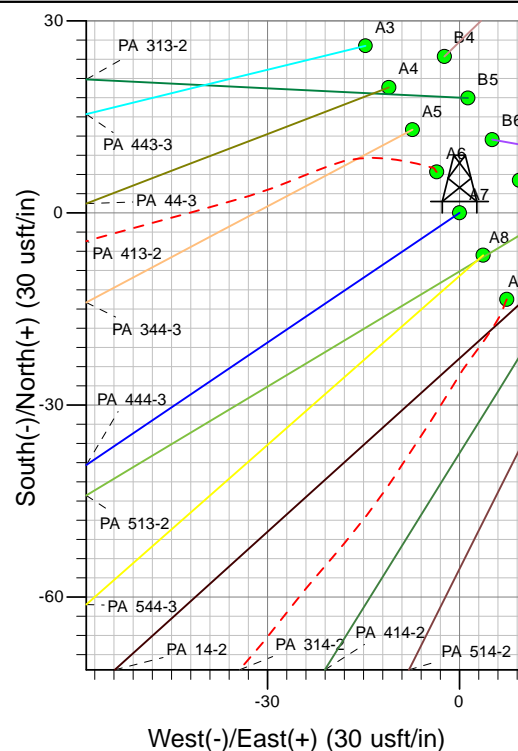
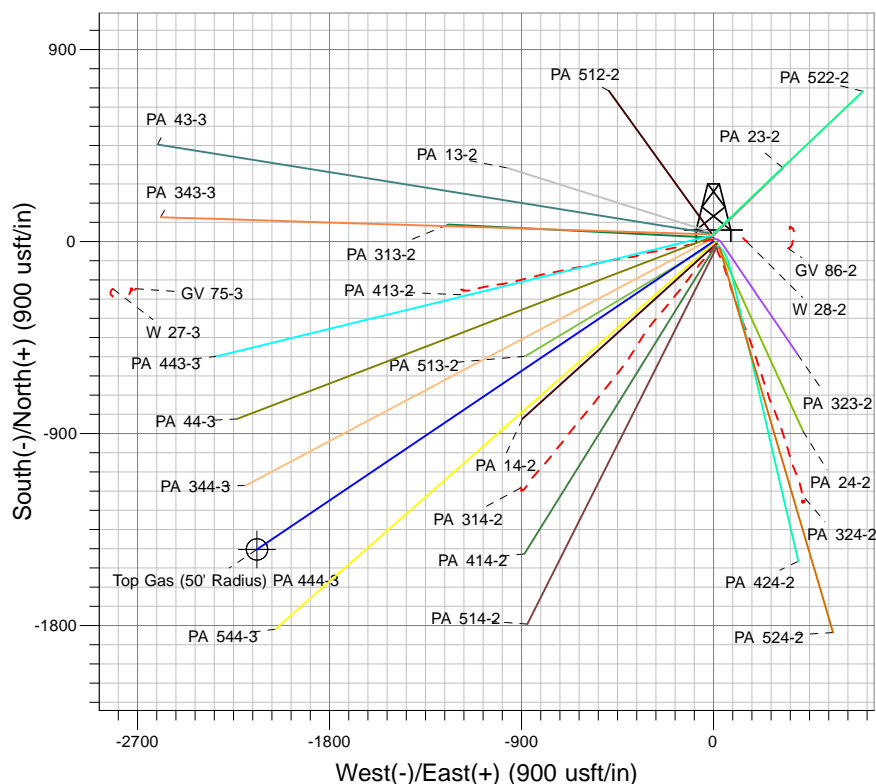
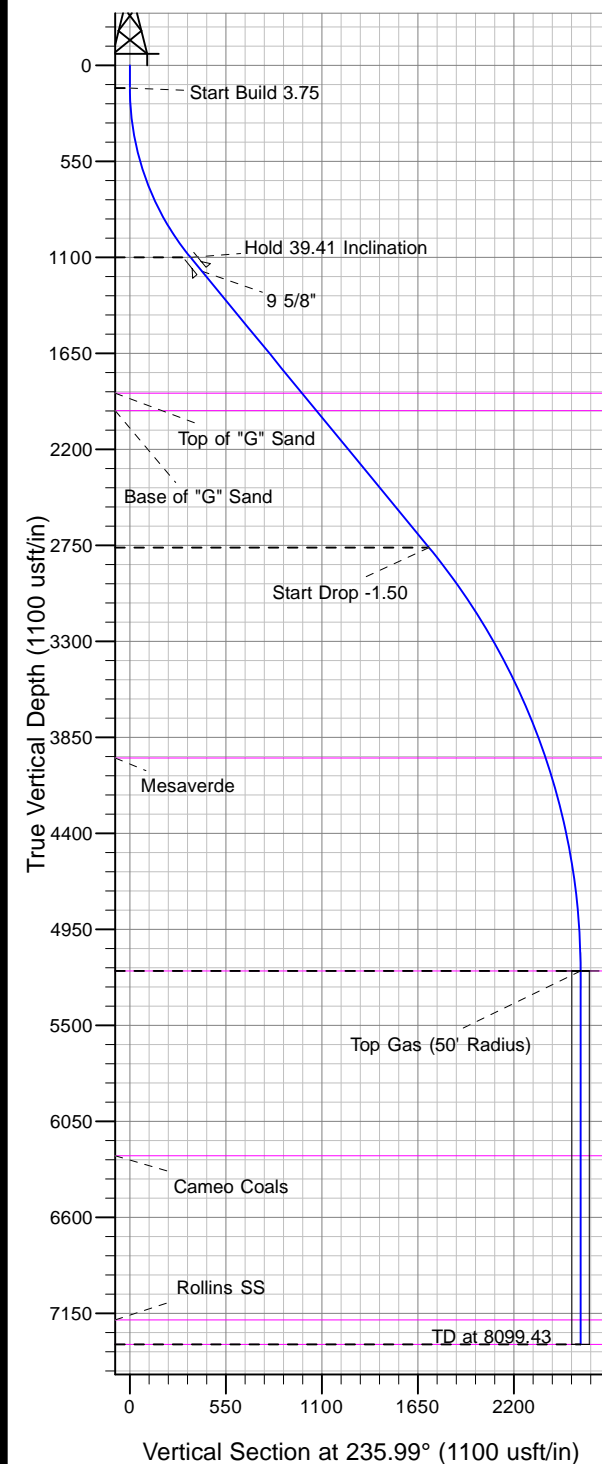




Well Name: PA 444-3
Surface Location: GV 86-2 Pad
North American Datum 1983 , US State Plane 1983, Colorado Central Zone
Ground Elevation: 5821.00

+N/-S	+E/-W	Northing	Easting	Latitude	Longitude	Slot
0.00	0.00	1603748.90	2302935.50	39.46505	-107.96932	A7

KELLY BUSHING @ 5847.00usft (Nabors 577 (26' RKB) kjs)



Project: PA 02-07S-095W
Site: GV 86-2 Pad
Well: PA 444-3
Plan #2 12Feb13 kjs



Azimuths to True North
Magnetic North: 10.78°
Magnetic Field
Strength: 52623.9snT
Dip Angle: 65.82°
Date: 11/1/2007
Model: IGRF2005-10

ANNOTATIONS

MD	Inc	Azi	TVD	+N/-S	+E/-W	VSect	Departure	Annotation
130.00	0.00	0.00	130.00	0.00	0.00	0.00	0.00	Start Build 3.75
1180.99	39.41	235.99	1100.04	-194.32	-288.02	347.44	347.44	Hold 39.41 Inclination
3331.96	39.41	235.99	2761.89	-958.11	-1420.09	1713.08	1713.08	Start Drop -1.50
5959.43	0.00	0.00	5187.00	-1443.91	-2140.14	2581.68	2581.68	Top Gas
8099.43	0.00	0.00	7327.00	-1443.91	-2140.14	2581.68	2581.68	TD at 8099.43