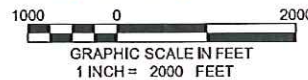
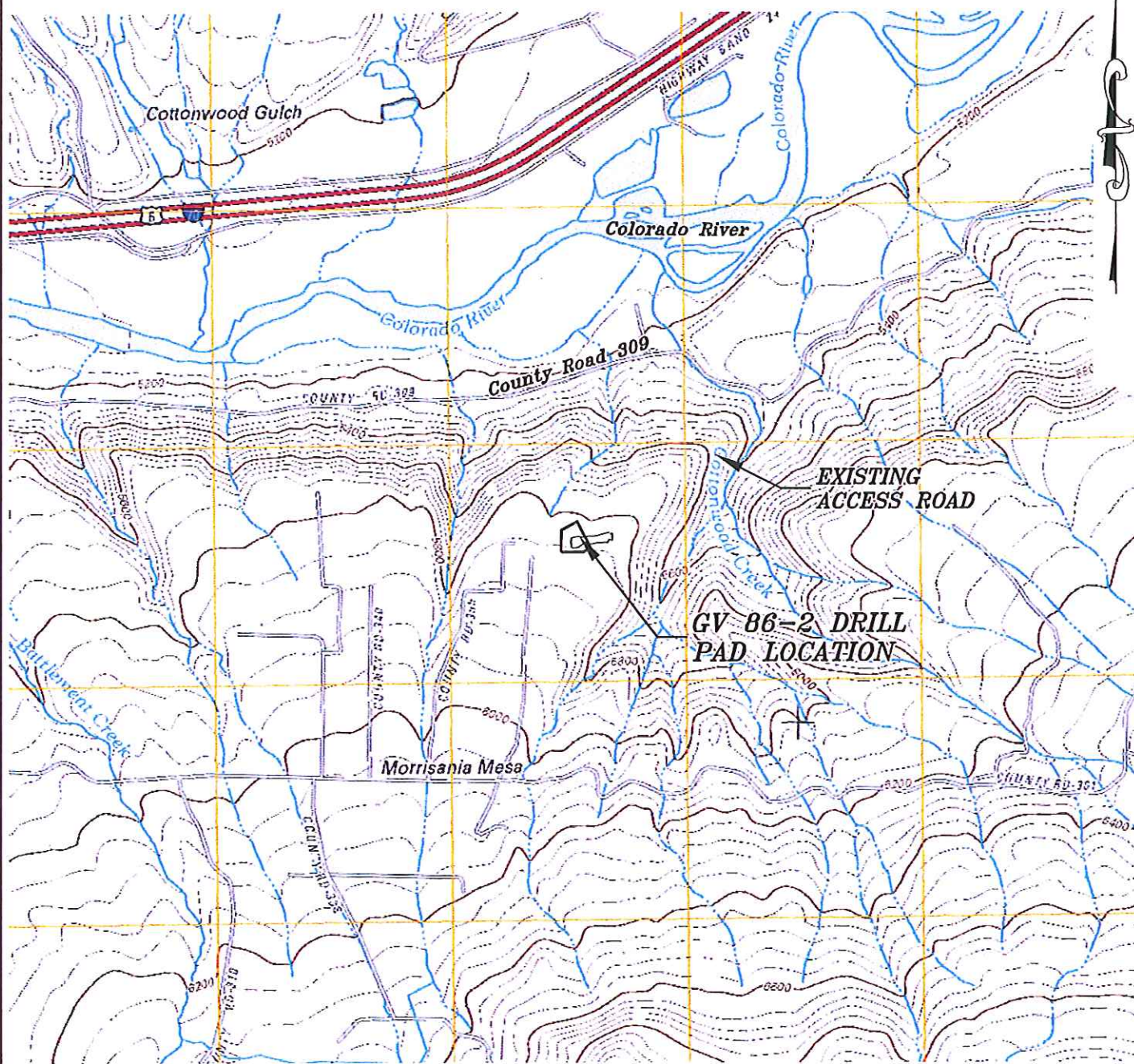


Section 2  
T. 7 S., R. 95 W.



**ACCESS DESCRIPTION:**

FROM THE INTERSECTION OF STATE HIGHWAY 6 AND COUNTY ROAD 323 (RULISON ROAD) NORTH OF RULISON, PROCEED SOUTHERLY ALONG COUNTY ROAD 323 (RULISON ROAD)  $\pm 1.1$  MILES TO THE INTERSECTION WITH COUNTY ROAD 309 (RULISON PARACHUTE ROAD), CONTINUE STRAIGHT AND THEN RIGHT IN A WESTERLY DIRECTION  $\pm 1.9$  MILES TO AN INTERSECTION WITH A DIRT/GRAVEL ROAD, PROCEED LEFT IN A SOUTHERLY DIRECTION  $\pm 1.9$  MILES TO THE EXISTING GV 86-2 DRILL PAD LOCATION, AS SHOWN HEREON.

REVISED: 4/23/13

136 East Third Street  
Rifle, Colorado 81650  
Ph. (970) 625-2720  
Fax (970) 625-2773



**BOOKCLIFF**  
Survey Services, Inc.

SCALE: 1" = 2000'  
DATE: 3/19/13  
PLAT: 5 of 7  
PROJECT: Valley  
DFT: cws

Construction Plan Prepared for:  
**WPXENERGY** WPX Energy Rocky Mountain, LLC

GV 86-2 Drill Pad - Plat 5  
ACCESS ROAD & TOPO MAP