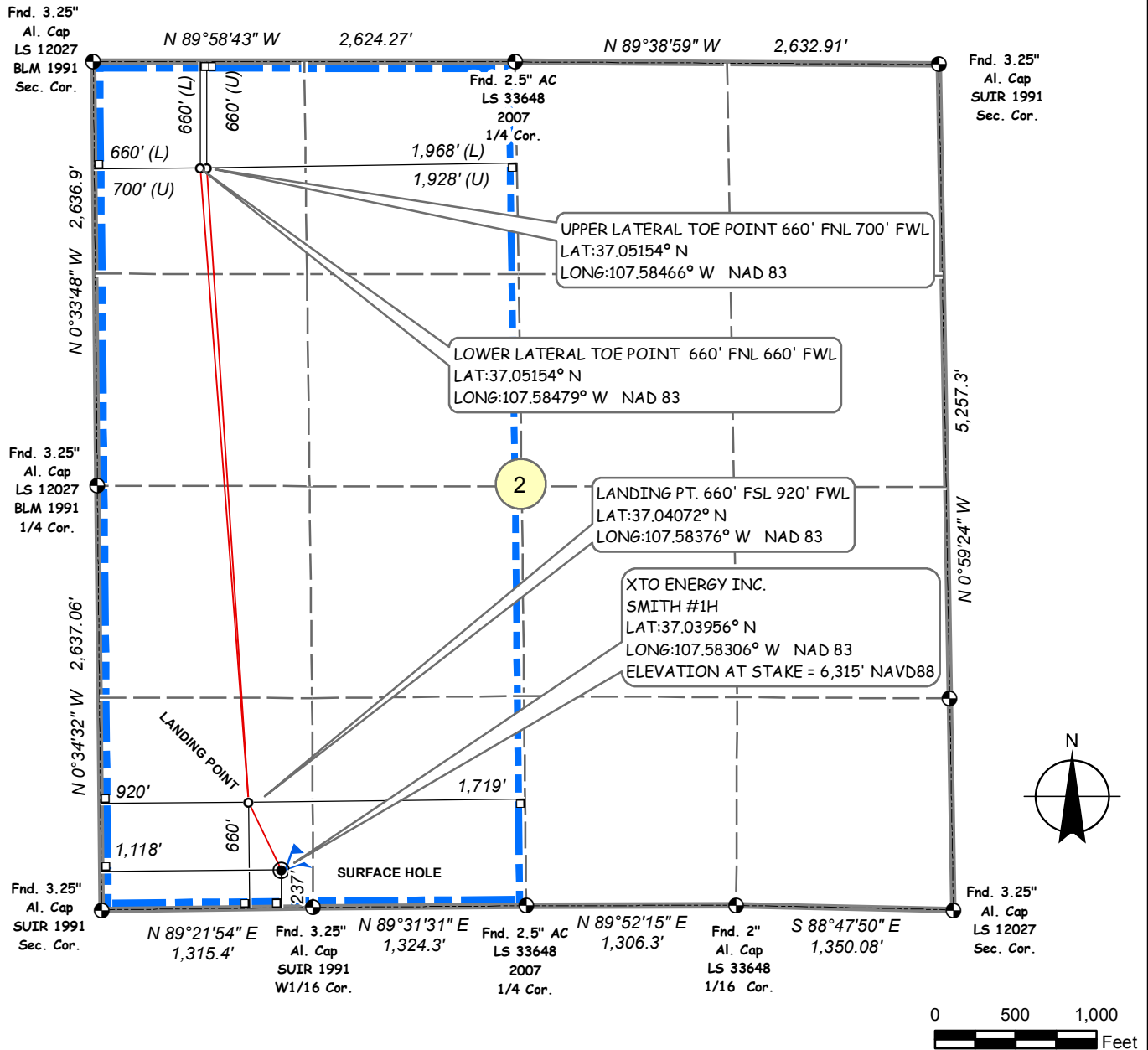


**XTO ENERGY INC.
SMITH #1H**

**SURFACE HOLE: 237' FSL, 1,118' FWL
SECTION 2, T-32-N, R-07-W, N.M.P.M.,
LA PLATA COUNTY, COLORADO
LAT:37.03956° N LONG:107.58306° W NAD 83
ELEVATION AT STAKE = 6,315' NAVD88**

**LAT: 37°02.3734' N
LONG: 107°34.9471' W
NAD27**



NOTES:

1. SURFACE USE IS GRAZING AND AGRICULTURAL.
2. SEE ATTACHED ADDENDUM FOR IMPROVEMENTS, AND PROPERTY LINES WITHIN 200' OF BORE.
3. DATE OF SURVEY 4/9/2012
4. BASIS OF ELEVATION = NAVD88 AS PREDICTED BY GEOID03.
5. GPS POSITIONS COLLECTED AT PDOP VALUE OF 6 OR LESS.
6. LOCATION OFFSETS TO SECTION LINE MEASURED AT 90° TO SECTION LINE.

**THIS IS TO CERTIFY THAT THE ABOVE PLAT WAS PREPARED
FROM FIELD NOTES OF ACTUAL SURVEYS MADE BY ME OR
UNDER MY DIRECT SUPERVISION AND THAT SAME ARE TRUE
AND CORRECT TO THE BEST OF MY KNOWLEDGE AND BELIEF.**

**DAVID ALEXANDER JOHNSON LICENSE NO. 33648 DATE
STATE OF COLORADO**

Legend

- DRILL PATH NODES
- SECTION
- QUARTER; SIXTEENTH
- OFFSET DIMENSION
- WF SMITH 1H
- LEASE_AREA
- DRILL PATH

SMITH1H_SD.MXD 2013_01_31

