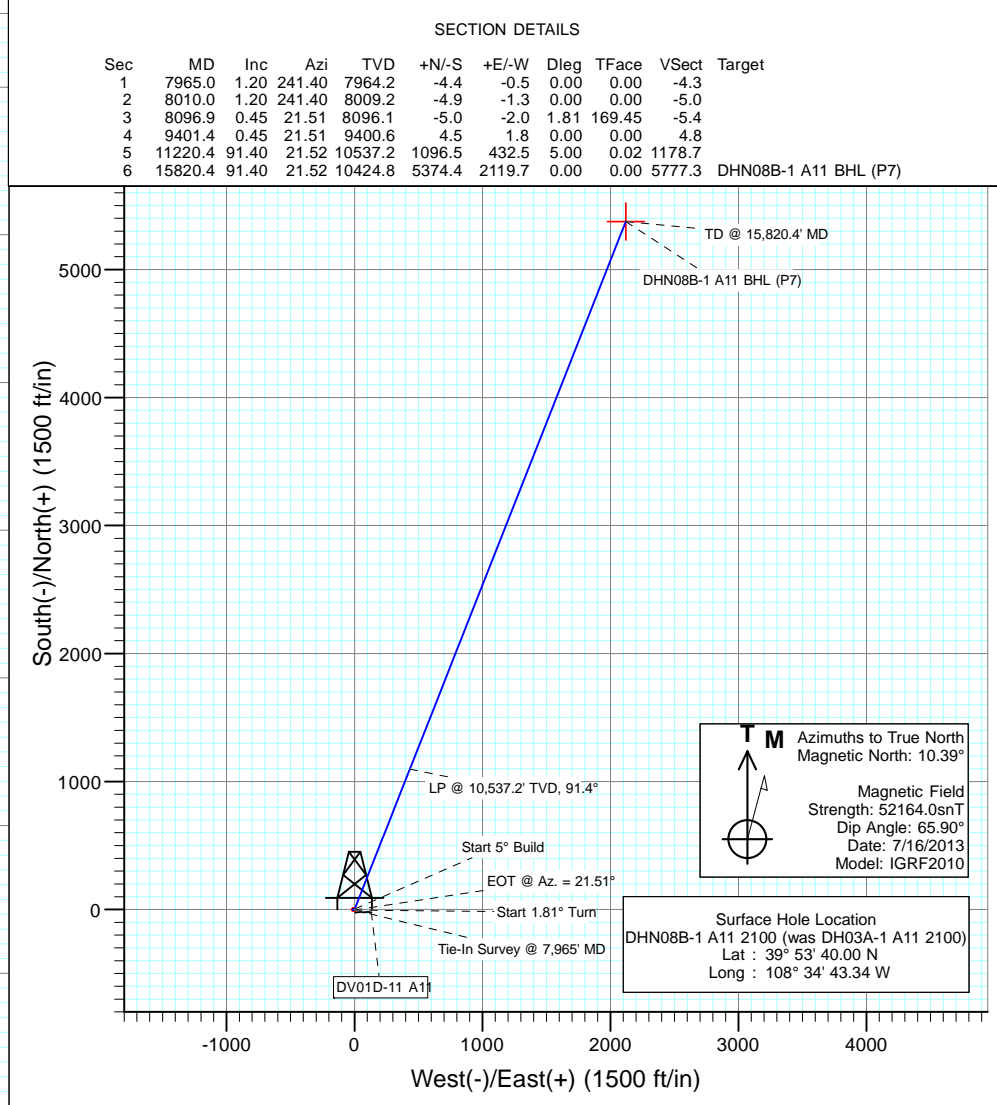
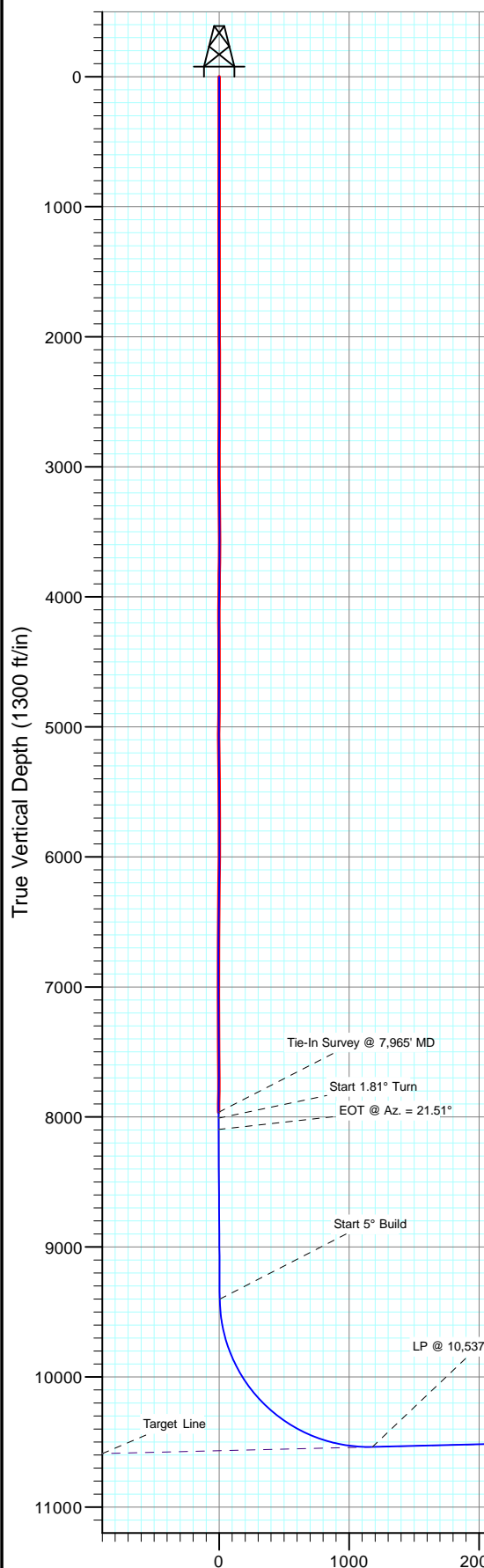




Project: Cathedral Bluffs
Site: Sec 11-2S-R100W
Well: DHN08B-1 A11 2100 (was DH03A-1 A11 2100)
Wellbore: Hz
Design: Plan #7



DESIGN TARGET DETAILS						
Name	+N/-S	+E/-W	Northing	Easting	Latitude	Longitude
DHN08B-1 A11 BHL (P7)	5374.4	2119.7	1770625.73	2138576.669	54° 33.11 N 108° 34' 16.14 W	

Plan #7
DHN08B-1 A11 2100 (was DH03A-1 A11 2100)
135303/247155 (SH) 135316/247455 (MH); SC
KB=32' @ 7973.0ft (Patterson #326)
Ground Elevation @ 7941.0
North American Datum 1983
Well DHN08B-1 A11 2100 (was DH03A-1 A11 2100), True North

FORMATION TOP DETAILS		
TVDPath	MDPath	Formation Target Line
10496.6	12883.1	

Cathedral Energy Services

Planning Report

Database:	USA EDM 5000 Multi Users DB	Local Co-ordinate Reference:	Well DHN08B-1 A11 2100 (was DH03A-1 A11 21
Company:	EnCana Oil & Gas (USA) Inc	TVD Reference:	KB=32' @ 7973.0ft (Patterson #326)
Project:	Cathedral Bluffs	MD Reference:	KB=32' @ 7973.0ft (Patterson #326)
Site:	Sec 11-2S-R100W	North Reference:	True
Well:	DHN08B-1 A11 2100 (was DH03A-1 A11 2100)	Survey Calculation Method:	Minimum Curvature
Wellbore:	Hz		
Design:	Plan #7		

Project	Cathedral Bluffs		
Map System:	US State Plane 1983	System Datum:	Mean Sea Level
Geo Datum:	North American Datum 1983		
Map Zone:	Colorado Central Zone		

Site		Sec 11-2S-R100W			
Site Position:		Northing:	1,765,302.83 ft	Latitude:	39° 53' 39.77 N
From:	Lat/Long	Easting:	2,136,283.89 ft	Longitude:	108° 34' 43.23 W
Position Uncertainty:	0.0 ft	Slot Radius:	13.200 in	Grid Convergence:	-1.94 °

Well	DHN08B-1 A11 2100 (was DH03A-1 A11 2100)					
Well Position	+N/-S	0.0 ft	Northing:	1,765,326.19 ft	Latitude:	39° 53' 40.00 N
	+E/-W	0.0 ft	Easting:	2,136,276.10 ft	Longitude:	108° 34' 43.34 W
Position Uncertainty		0.0 ft	Wellhead Elevation:	ft	Ground Level:	7,941.0 ft

Wellbore	Hz				
Magnetics	Model Name	Sample Date	Declination (°)	Dip Angle (°)	Field Strength (nT)
	IGRF2010	7/16/2013	10.39	65.90	52,164

Design	Plan #7				
Audit Notes:					
Version:	Phase:	PLAN	Tie On Depth:	7,965.0	
Vertical Section:	Depth From (TVD) (ft)	+N/-S (ft)	+E/-W (ft)	Direction (°)	
	0.0	0.0	0.0	21.52	

Plan Sections										
Measured Depth (ft)	Inclination (°)	Azimuth (°)	Vertical Depth (ft)	+N/-S (ft)	+E/-W (ft)	Dogleg Rate (°/100ft)	Build Rate (°/100ft)	Turn Rate (°/100ft)	TFO (°)	Target
7,965.0	1.20	241.40	7,964.2	-4.4	-0.5	0.00	0.00	0.00	0.00	
8,010.0	1.20	241.40	8,009.2	-4.9	-1.3	0.00	0.00	0.00	0.00	
8,096.9	0.45	21.51	8,096.1	-5.0	-2.0	1.81	-0.87	161.20	169.45	
9,401.4	0.45	21.51	9,400.6	4.5	1.8	0.00	0.00	0.00	0.00	
11,220.4	91.40	21.52	10,537.2	1,096.5	432.5	5.00	5.00	0.00	0.02	
15,820.4	91.40	21.52	10,424.8	5,374.4	2,119.7	0.00	0.00	0.00	0.00	DHN08B-1 A11 BHL (

Cathedral Energy Services

Planning Report

Database:	USA EDM 5000 Multi Users DB	Local Co-ordinate Reference:	Well DHN08B-1 A11 2100 (was DH03A-1 A11 21
Company:	EnCana Oil & Gas (USA) Inc	TVD Reference:	KB=32' @ 7973.0ft (Patterson #326)
Project:	Cathedral Bluffs	MD Reference:	KB=32' @ 7973.0ft (Patterson #326)
Site:	Sec 11-2S-R100W	North Reference:	True
Well:	DHN08B-1 A11 2100 (was DH03A-1 A11 2100)	Survey Calculation Method:	Minimum Curvature
Wellbore:	Hz		
Design:	Plan #7		

Planned Survey

Measured Depth (ft)	Inclination (°)	Azimuth (°)	Vertical Depth (ft)	+N/-S (ft)	+E/-W (ft)	Vertical Section (ft)	Dogleg Rate (°/100ft)	Build Rate (°/100ft)	Comments / Formations
0.0	0.00	0.00	0.0	0.0	0.0	0.0	0.00	0.00	
209.0	0.70	286.60	209.0	0.4	-1.2	-0.1	0.33	0.33	
301.0	0.70	280.40	301.0	0.6	-2.3	-0.3	0.08	0.00	
393.0	0.00	280.40	393.0	0.7	-2.9	-0.4	0.76	-0.76	
485.0	0.30	62.20	485.0	0.8	-2.7	-0.2	0.33	0.33	
577.0	0.30	22.50	577.0	1.2	-2.3	0.2	0.22	0.00	
608.0	0.20	1.30	608.0	1.3	-2.3	0.4	0.43	-0.32	
703.0	0.30	331.40	703.0	1.7	-2.4	0.7	0.17	0.11	
798.0	0.40	285.80	798.0	2.0	-2.9	0.8	0.30	0.11	
892.0	0.30	287.90	892.0	2.2	-3.4	0.8	0.11	-0.11	
987.0	0.20	332.30	987.0	2.4	-3.7	0.8	0.22	-0.11	
1,081.0	0.40	145.70	1,081.0	2.3	-3.6	0.8	0.64	0.21	
1,176.0	0.90	148.80	1,176.0	1.3	-3.1	0.1	0.53	0.53	
1,271.0	0.80	147.80	1,271.0	0.1	-2.3	-0.7	0.11	-0.11	
1,365.0	0.50	120.30	1,365.0	-0.6	-1.6	-1.2	0.45	-0.32	
1,460.0	0.40	89.90	1,460.0	-0.8	-0.9	-1.1	0.27	-0.11	
1,555.0	0.20	63.10	1,555.0	-0.7	-0.4	-0.9	0.25	-0.21	
1,645.0	0.40	330.80	1,645.0	-0.4	-0.5	-0.5	0.50	0.22	
1,743.0	0.30	327.70	1,742.9	0.1	-0.8	-0.2	0.10	-0.10	
1,838.0	0.70	306.30	1,837.9	0.7	-1.4	0.1	0.46	0.42	
1,931.0	1.00	296.60	1,930.9	1.4	-2.5	0.3	0.36	0.32	
2,026.0	1.00	303.60	2,025.9	2.2	-4.0	0.6	0.13	0.00	
2,118.0	0.30	332.50	2,117.9	2.9	-4.8	0.9	0.82	-0.76	
2,215.0	0.40	101.00	2,214.9	3.0	-4.5	1.1	0.65	0.10	
2,309.0	0.40	117.00	2,308.9	2.8	-3.9	1.2	0.12	0.00	
2,404.0	0.10	119.20	2,403.9	2.6	-3.6	1.1	0.32	-0.32	
2,473.0	0.20	264.10	2,472.9	2.6	-3.6	1.1	0.42	0.14	
2,600.0	0.50	256.60	2,599.9	2.4	-4.4	0.6	0.24	0.24	
2,694.0	0.80	289.50	2,693.9	2.5	-5.4	0.4	0.50	0.32	
2,789.0	1.10	139.10	2,788.9	2.1	-5.4	-0.1	1.94	0.32	
2,883.0	0.50	138.70	2,882.9	1.1	-4.6	-0.7	0.64	-0.64	
2,977.0	0.60	166.30	2,976.9	0.3	-4.2	-1.3	0.30	0.11	
3,072.0	0.80	63.20	3,071.9	0.1	-3.5	-1.2	1.16	0.21	
3,167.0	1.00	59.30	3,166.9	0.8	-2.2	0.0	0.22	0.21	
3,261.0	0.50	22.40	3,260.9	1.6	-1.3	1.0	0.71	-0.53	
3,355.0	0.40	340.30	3,354.9	2.3	-1.3	1.7	0.36	-0.11	
3,450.0	1.10	75.40	3,449.9	2.9	-0.5	2.5	1.27	0.74	
3,544.0	0.70	100.40	3,543.8	3.0	1.0	3.1	0.59	-0.43	
3,639.0	1.00	90.80	3,638.8	2.9	2.4	3.5	0.35	0.32	
3,733.0	1.90	171.20	3,732.8	1.3	3.4	2.5	2.12	0.96	
3,828.0	0.30	198.30	3,827.8	-0.5	3.6	0.9	1.72	-1.68	
3,922.0	0.70	233.30	3,921.8	-1.0	3.0	0.1	0.52	0.43	
4,017.0	1.10	257.80	4,016.8	-1.6	1.7	-0.9	0.58	0.42	
4,111.0	1.50	270.20	4,110.8	-1.8	-0.4	-1.8	0.52	0.43	
4,205.0	2.10	302.10	4,204.7	-0.9	-3.1	-1.9	1.22	0.64	
4,299.0	1.00	317.00	4,298.7	0.7	-5.1	-1.3	1.24	-1.17	
4,394.0	0.30	308.70	4,393.7	1.4	-5.9	-0.8	0.74	-0.74	
4,488.0	1.00	298.00	4,487.7	2.0	-6.8	-0.7	0.75	0.74	
4,583.0	0.20	53.90	4,582.7	2.4	-7.4	-0.4	1.16	-0.84	
4,677.0	0.40	274.00	4,676.7	2.6	-7.6	-0.4	0.60	0.21	
4,772.0	0.80	280.40	4,771.6	2.7	-8.6	-0.6	0.43	0.42	
4,866.0	1.10	141.70	4,865.6	2.1	-8.7	-1.2	1.89	0.32	

Cathedral Energy Services

Planning Report

Database:	USA EDM 5000 Multi Users DB	Local Co-ordinate Reference:	Well DHN08B-1 A11 2100 (was DH03A-1 A11 21
Company:	EnCana Oil & Gas (USA) Inc	TVD Reference:	KB=32' @ 7973.0ft (Patterson #326)
Project:	Cathedral Bluffs	MD Reference:	KB=32' @ 7973.0ft (Patterson #326)
Site:	Sec 11-2S-R100W	North Reference:	True
Well:	DHN08B-1 A11 2100 (was DH03A-1 A11 2100)	Survey Calculation Method:	Minimum Curvature
Wellbore:	Hz		
Design:	Plan #7		

Planned Survey

Measured Depth (ft)	Inclination (°)	Azimuth (°)	Vertical Depth (ft)	+N/-S (ft)	+E/-W (ft)	Vertical Section (ft)	Dogleg Rate (°/100ft)	Build Rate (°/100ft)	Comments / Formations
4,961.0	0.90	174.20	4,960.6	0.7	-8.0	-2.3	0.62	-0.21	
5,056.0	0.80	210.80	5,055.6	-0.6	-8.3	-3.6	0.57	-0.11	
5,151.0	1.20	47.40	5,150.6	-0.5	-7.9	-3.4	2.08	0.42	
5,246.0	1.00	358.30	5,245.6	1.0	-7.2	-1.8	0.98	-0.21	
5,341.0	1.10	316.80	5,340.6	2.5	-7.9	-0.6	0.79	0.11	
5,435.0	0.70	78.80	5,434.6	3.2	-7.9	0.1	1.69	-0.43	
5,530.0	0.20	7.60	5,529.6	3.5	-7.3	0.6	0.70	-0.53	
5,625.0	1.00	91.50	5,624.6	3.6	-6.5	1.0	1.05	0.84	
5,719.0	0.30	54.00	5,718.6	3.8	-5.4	1.5	0.83	-0.74	
5,814.0	0.80	104.40	5,813.6	3.7	-4.6	1.8	0.69	0.53	
5,909.0	0.30	289.40	5,908.5	3.7	-4.2	1.9	1.16	-0.53	
6,004.0	0.80	115.20	6,003.5	3.5	-3.8	1.8	1.16	0.53	
6,098.0	0.80	279.50	6,097.5	3.3	-3.9	1.6	1.69	0.00	
6,193.0	1.10	244.60	6,192.5	3.0	-5.4	0.8	0.67	0.32	
6,287.0	1.70	162.40	6,286.5	1.3	-5.8	-0.9	2.02	0.64	
6,382.0	1.40	266.50	6,381.5	-0.1	-6.5	-2.5	2.58	-0.32	
6,477.0	2.20	285.90	6,476.4	0.3	-9.4	-3.2	1.05	0.84	
6,572.0	1.30	250.70	6,571.4	0.5	-12.2	-4.0	1.43	-0.95	
6,666.0	0.90	161.90	6,665.4	-0.6	-12.9	-5.3	1.67	-0.43	
6,760.0	1.20	179.20	6,759.4	-2.3	-12.7	-6.8	0.46	0.32	
6,855.0	1.50	82.00	6,854.4	-3.1	-11.5	-7.1	2.14	0.32	
6,950.0	0.80	96.40	6,949.3	-3.0	-9.6	-6.3	0.79	-0.74	
7,045.0	0.40	104.30	7,044.3	-3.2	-8.6	-6.1	0.43	-0.42	
7,139.0	1.40	68.90	7,138.3	-2.8	-7.2	-5.3	1.17	1.06	
7,233.0	0.60	49.40	7,232.3	-2.1	-5.8	-4.1	0.91	-0.85	
7,328.0	0.60	157.00	7,327.3	-2.2	-5.2	-4.0	1.02	0.00	
7,422.0	0.70	45.30	7,421.3	-2.3	-4.6	-3.8	1.15	0.11	
7,517.0	1.40	93.70	7,516.3	-2.0	-3.0	-2.9	1.13	0.74	
7,611.0	0.30	56.50	7,610.3	-1.9	-1.7	-2.4	1.25	-1.17	
7,705.0	0.20	128.00	7,704.3	-1.9	-1.3	-2.2	0.32	-0.11	
7,800.0	1.10	133.50	7,799.3	-2.6	-0.5	-2.6	0.95	0.95	
7,895.0	0.60	176.80	7,894.3	-3.7	0.2	-3.4	0.82	-0.53	
7,965.0	1.20	241.40	7,964.2	-4.4	-0.5	-4.3	1.55	0.86	Tie-In Survey @ 7,965' MD
8,000.0	1.20	241.40	7,999.2	-4.8	-1.1	-4.9	0.00	0.00	
8,010.0	1.20	241.40	8,009.2	-4.9	-1.3	-5.0	0.00	0.00	Start 1.81° Turn
8,096.9	0.45	21.51	8,096.1	-5.0	-2.0	-5.4	1.81	-0.87	EOT @ Az. = 21.51°
8,100.0	0.45	21.51	8,099.2	-5.0	-2.0	-5.3	0.00	0.00	
8,200.0	0.45	21.51	8,199.2	-4.2	-1.7	-4.6	0.00	0.00	
8,300.0	0.45	21.51	8,299.2	-3.5	-1.4	-3.8	0.00	0.00	
8,400.0	0.45	21.51	8,399.2	-2.8	-1.1	-3.0	0.00	0.00	
8,500.0	0.45	21.51	8,499.2	-2.1	-0.8	-2.2	0.00	0.00	
8,600.0	0.45	21.51	8,599.2	-1.3	-0.5	-1.4	0.00	0.00	
8,700.0	0.45	21.51	8,699.2	-0.6	-0.2	-0.7	0.00	0.00	
8,800.0	0.45	21.51	8,799.2	0.1	0.0	0.1	0.00	0.00	
8,900.0	0.45	21.51	8,899.2	0.8	0.3	0.9	0.00	0.00	
9,000.0	0.45	21.51	8,999.2	1.6	0.6	1.7	0.00	0.00	
9,100.0	0.45	21.51	9,099.2	2.3	0.9	2.5	0.00	0.00	
9,200.0	0.45	21.51	9,199.2	3.0	1.2	3.3	0.00	0.00	
9,300.0	0.45	21.51	9,299.2	3.8	1.5	4.0	0.00	0.00	
9,401.4	0.45	21.51	9,400.6	4.5	1.8	4.8	0.00	0.00	Start 5° Build
9,500.0	5.38	21.52	9,499.0	9.2	3.6	9.8	5.00	5.00	
9,600.0	10.38	21.52	9,598.1	21.9	8.6	23.5	5.00	5.00	

Cathedral Energy Services

Planning Report

Database:	USA EDM 5000 Multi Users DB	Local Co-ordinate Reference:	Well DHN08B-1 A11 2100 (was DH03A-1 A11 21
Company:	EnCana Oil & Gas (USA) Inc	TVD Reference:	KB=32' @ 7973.0ft (Patterson #326)
Project:	Cathedral Bluffs	MD Reference:	KB=32' @ 7973.0ft (Patterson #326)
Site:	Sec 11-2S-R100W	North Reference:	True
Well:	DHN08B-1 A11 2100 (was DH03A-1 A11 2100)	Survey Calculation Method:	Minimum Curvature
Wellbore:	Hz		
Design:	Plan #7		

Planned Survey

Measured Depth (ft)	Inclination (°)	Azimuth (°)	Vertical Depth (ft)	+N/-S (ft)	+E/-W (ft)	Vertical Section (ft)	Dogleg Rate (°/100ft)	Build Rate (°/100ft)	Comments / Formations
9,700.0	15.38	21.52	9,695.5	42.6	16.8	45.8	5.00	5.00	
9,800.0	20.38	21.52	9,790.7	71.2	28.1	76.5	5.00	5.00	
9,900.0	25.38	21.52	9,882.8	107.3	42.3	115.4	5.00	5.00	
10,000.0	30.38	21.52	9,971.1	150.8	59.5	162.1	5.00	5.00	
10,100.0	35.38	21.52	10,055.1	201.3	79.4	216.4	5.00	5.00	
10,200.0	40.38	21.52	10,134.0	258.4	101.9	277.8	5.00	5.00	
10,300.0	45.38	21.52	10,207.2	321.7	126.9	345.8	5.00	5.00	
10,400.0	50.38	21.52	10,274.3	390.7	154.1	420.0	5.00	5.00	
10,500.0	55.38	21.52	10,334.6	464.8	183.3	499.7	5.00	5.00	
10,600.0	60.38	21.52	10,387.8	543.6	214.4	584.3	5.00	5.00	
10,700.0	65.38	21.52	10,433.3	626.3	247.0	673.3	5.00	5.00	
10,800.0	70.38	21.52	10,471.0	712.5	281.0	765.9	5.00	5.00	
10,900.0	75.38	21.52	10,500.4	801.4	316.1	861.5	5.00	5.00	
11,000.0	80.38	21.52	10,521.4	892.3	351.9	959.2	5.00	5.00	
11,100.0	85.38	21.52	10,533.8	984.6	388.3	1,058.4	5.00	5.00	
11,200.0	90.38	21.52	10,537.5	1,077.5	425.0	1,158.3	5.00	5.00	
11,220.4	91.40	21.52	10,537.2	1,096.5	432.5	1,178.7	5.00	5.00	LP @ 10,537.2' TVD, 91.4°
11,300.0	91.40	21.52	10,535.2	1,170.5	461.6	1,258.3	0.00	0.00	
11,400.0	91.40	21.52	10,532.8	1,263.5	498.3	1,358.2	0.00	0.00	
11,500.0	91.40	21.52	10,530.4	1,356.5	535.0	1,458.2	0.00	0.00	
11,600.0	91.40	21.52	10,527.9	1,449.5	571.7	1,558.2	0.00	0.00	
11,700.0	91.40	21.52	10,525.5	1,542.5	608.4	1,658.1	0.00	0.00	
11,800.0	91.40	21.52	10,523.0	1,635.5	645.0	1,758.1	0.00	0.00	
11,900.0	91.40	21.52	10,520.6	1,728.5	681.7	1,858.1	0.00	0.00	
12,000.0	91.40	21.52	10,518.1	1,821.5	718.4	1,958.1	0.00	0.00	
12,100.0	91.40	21.52	10,515.7	1,914.5	755.1	2,058.0	0.00	0.00	
12,200.0	91.40	21.52	10,513.3	2,007.5	791.8	2,158.0	0.00	0.00	
12,300.0	91.40	21.52	10,510.8	2,100.5	828.4	2,258.0	0.00	0.00	
12,400.0	91.40	21.52	10,508.4	2,193.5	865.1	2,357.9	0.00	0.00	
12,500.0	91.40	21.52	10,505.9	2,286.5	901.8	2,457.9	0.00	0.00	
12,600.0	91.40	21.52	10,503.5	2,379.5	938.5	2,557.9	0.00	0.00	
12,700.0	91.40	21.52	10,501.0	2,472.5	975.1	2,657.8	0.00	0.00	
12,800.0	91.40	21.52	10,498.6	2,565.5	1,011.8	2,757.8	0.00	0.00	
12,883.1	91.40	21.52	10,496.6	2,642.8	1,042.3	2,840.9	0.00	0.00	Target Line
12,900.0	91.40	21.52	10,496.2	2,658.5	1,048.5	2,857.8	0.00	0.00	
13,000.0	91.40	21.52	10,493.7	2,751.5	1,085.2	2,957.8	0.00	0.00	
13,100.0	91.40	21.52	10,491.3	2,844.5	1,121.9	3,057.7	0.00	0.00	
13,200.0	91.40	21.52	10,488.8	2,937.5	1,158.5	3,157.7	0.00	0.00	
13,300.0	91.40	21.52	10,486.4	3,030.5	1,195.2	3,257.7	0.00	0.00	
13,400.0	91.40	21.52	10,483.9	3,123.5	1,231.9	3,357.6	0.00	0.00	
13,500.0	91.40	21.52	10,481.5	3,216.5	1,268.6	3,457.6	0.00	0.00	
13,600.0	91.40	21.52	10,479.1	3,309.5	1,305.3	3,557.6	0.00	0.00	
13,700.0	91.40	21.52	10,476.6	3,402.5	1,341.9	3,657.5	0.00	0.00	
13,800.0	91.40	21.52	10,474.2	3,495.5	1,378.6	3,757.5	0.00	0.00	
13,900.0	91.40	21.52	10,471.7	3,588.5	1,415.3	3,857.5	0.00	0.00	
14,000.0	91.40	21.52	10,469.3	3,681.5	1,452.0	3,957.5	0.00	0.00	
14,100.0	91.40	21.52	10,466.8	3,774.5	1,488.6	4,057.4	0.00	0.00	
14,200.0	91.40	21.52	10,464.4	3,867.5	1,525.3	4,157.4	0.00	0.00	
14,300.0	91.40	21.52	10,462.0	3,960.5	1,562.0	4,257.4	0.00	0.00	
14,400.0	91.40	21.52	10,459.5	4,053.5	1,598.7	4,357.3	0.00	0.00	
14,500.0	91.40	21.52	10,457.1	4,146.5	1,635.4	4,457.3	0.00	0.00	
14,600.0	91.40	21.52	10,454.6	4,239.5	1,672.0	4,557.3	0.00	0.00	

Cathedral Energy Services

Planning Report

Database:	USA EDM 5000 Multi Users DB	Local Co-ordinate Reference:	Well DHN08B-1 A11 2100 (was DH03A-1 A11 21
Company:	EnCana Oil & Gas (USA) Inc	TVD Reference:	KB=32' @ 7973.0ft (Patterson #326)
Project:	Cathedral Bluffs	MD Reference:	KB=32' @ 7973.0ft (Patterson #326)
Site:	Sec 11-2S-R100W	North Reference:	True
Well:	DHN08B-1 A11 2100 (was DH03A-1 A11 2100)	Survey Calculation Method:	Minimum Curvature
Wellbore:	Hz		
Design:	Plan #7		

Planned Survey

Measured Depth (ft)	Inclination (°)	Azimuth (°)	Vertical Depth (ft)	+N/-S (ft)	+E/-W (ft)	Vertical Section (ft)	Dogleg Rate (°/100ft)	Build Rate (°/100ft)	Comments / Formations
14,700.0	91.40	21.52	10,452.2	4,332.5	1,708.7	4,657.2	0.00	0.00	
14,800.0	91.40	21.52	10,449.7	4,425.5	1,745.4	4,757.2	0.00	0.00	
14,900.0	91.40	21.52	10,447.3	4,518.5	1,782.1	4,857.2	0.00	0.00	
15,000.0	91.40	21.52	10,444.9	4,611.5	1,818.7	4,957.2	0.00	0.00	
15,100.0	91.40	21.52	10,442.4	4,704.5	1,855.4	5,057.1	0.00	0.00	
15,200.0	91.40	21.52	10,440.0	4,797.5	1,892.1	5,157.1	0.00	0.00	
15,300.0	91.40	21.52	10,437.5	4,890.5	1,928.8	5,257.1	0.00	0.00	
15,400.0	91.40	21.52	10,435.1	4,983.5	1,965.5	5,357.0	0.00	0.00	
15,500.0	91.40	21.52	10,432.6	5,076.5	2,002.1	5,457.0	0.00	0.00	
15,600.0	91.40	21.52	10,430.2	5,169.4	2,038.8	5,557.0	0.00	0.00	
15,700.0	91.40	21.52	10,427.8	5,262.4	2,075.5	5,656.9	0.00	0.00	
15,800.0	91.40	21.52	10,425.3	5,355.4	2,112.2	5,756.9	0.00	0.00	
15,820.4	91.40	21.52	10,424.8	5,374.4	2,119.7	5,777.3	0.00	0.00	TD @ 15,820.4' MD

Targets

Target Name - hit/miss target - Shape	Dip Angle (°)	Dip Dir. (°)	TVD (ft)	+N/-S (ft)	+E/-W (ft)	Northing (ft)	Easting (ft)	Latitude	Longitude
DHN08B-1 A11 LP (3) - plan misses target center by 664.5ft at 10968.6ft MD (10515.7 TVD, 863.6 N, 340.6 E) - Point	0.00	0.00	9,866.1	993.4	391.8	1,766,305.70	2,136,701.31	39° 53' 49.82 N	108° 34' 38.31 W
DHN08B-1 A11 LP (P7) - plan misses target center by 5.4ft at 11109.7ft MD (10534.5 TVD, 993.5 N, 391.8 E) - Point	0.00	0.00	10,539.9	993.4	391.8	1,766,305.70	2,136,701.31	39° 53' 49.82 N	108° 34' 38.31 W
DHN08B-1 A11 BHL (P7) - plan hits target center - Point	0.00	0.00	10,424.8	5,374.4	2,119.7	1,770,625.73	2,138,576.66	39° 54' 33.11 N	108° 34' 16.14 W
DHN08B-1 A11 BHL (3) - plan misses target center by 236.8ft at 15820.4ft MD (10424.8 TVD, 5374.4 N, 2119.7 E) - Point	0.00	0.00	10,188.0	5,374.4	2,119.7	1,770,625.73	2,138,576.66	39° 54' 33.11 N	108° 34' 16.14 W

Formations

Measured Depth (ft)	Vertical Depth (ft)	Name	Lithology	Dip (°)	Dip Direction (°)
12,883.1	10,566.0	Target Line		-1.40	21.52

Plan Annotations

Measured Depth (ft)	Vertical Depth (ft)	Local Coordinates +N/-S (ft)	+E/-W (ft)	Comment
7,965.0	7,964.2	-4.4	-0.5	Tie-In Survey @ 7,965' MD
8,010.0	8,009.2	-4.9	-1.3	Start 1.81° Turn
8,096.9	8,096.1	-5.0	-2.0	EOT @ Az. = 21.51°
9,401.4	9,400.6	4.5	1.8	Start 5° Build
11,220.4	10,537.2	1,096.5	432.5	LP @ 10,537.2' TVD, 91.4°
15,820.4	10,424.8	5,374.4	2,119.7	TD @ 15,820.4' MD