

1920, 1982 Brass
Cap, 1.0' High, Pile
of Stones
Lat: 39.415767°
Long: 108.105689°

1982 Alum. Cap,
0.2' High, Pile of
Stones
Lat: 39.415822°
Long: 108.101033°

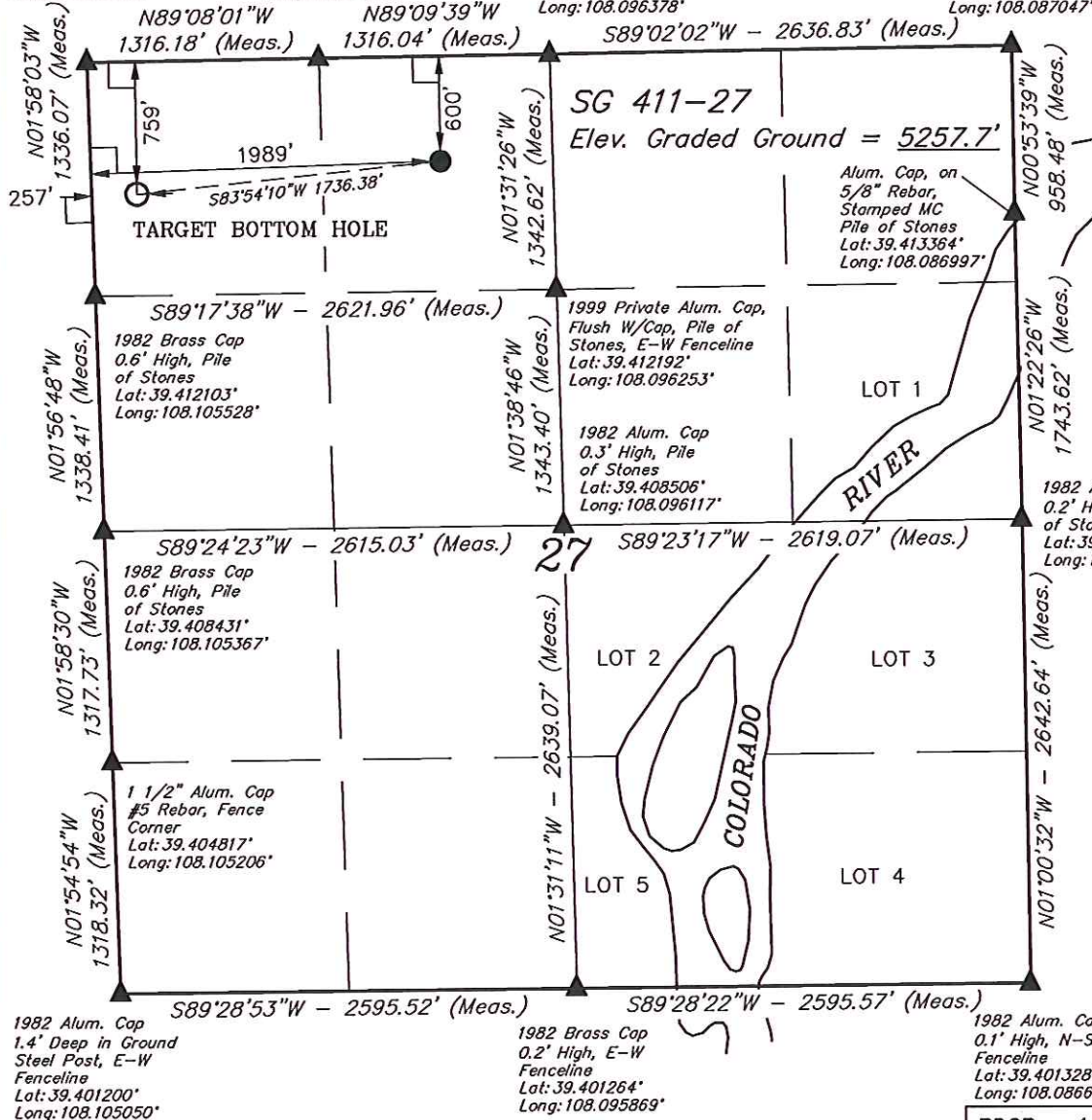
1982 Alum. Cap,
0.3' High, Pile of
Stones
Lat: 39.415861°
Long: 108.096378°

1920 Brass Cap,
1.4' High, Pile of
Stones
Lat: 39.415994°
Long: 108.087047°

T7S, R96W, 6th P.M.

WPX Energy Rocky Mountain, LLC

Well location, SG 411-27, located as shown in the
NE 1/4 NW 1/4 of Section 27, T7S, R96W, 6th
P.M., Garfield County, Colorado.

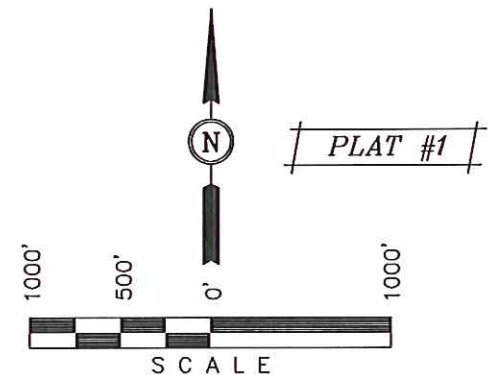


BASIS OF ELEVATION

SPOT ELEVATION AT THE NORTHWEST CORNER OF SECTION
30, T5S, R95W, 6th P.M. TAKEN FROM THE FORKED GULCH
QUADRANGLE, COLORADO, GARFIELD COUNTY, 7.5 MINUTE
SERIES (TOPOGRAPHICAL MAP) PUBLISHED BY THE UNITED
STATES DEPARTMENT OF THE INTERIOR, GEOLOGICAL SURVEY.
SAID ELEVATION IS MARKED AS BEING 5966 FEET.

BASIS OF BEARINGS

BASIS OF BEARINGS IS A G.P.S. OBSERVATION.



CERTIFICATE

THIS IS TO CERTIFY THAT THE ABOVE PLAT WAS PREPARED AND
LOCATION AS SHOWN WAS STAKED ON THE GROUND FROM FIELD
NOTES OF ACTUAL SURVEYS MADE BY ME OR UNDER MY
SUPERVISION AND THAT THE SAME ARE TRUE AND CORRECT TO
THE BEST OF MY KNOWLEDGE AND BELIEF.

REGISTERED LAND SURVEYOR
REGISTRATION NO. 17492
STATE OF COLORADO
05-07-2013

UINTAH ENGINEERING & LAND SURVEYING
85 SOUTH 200 EAST - VERNAL, UTAH 84078
(435) 789-1017

PDOP = 1.7

LEGEND:

- = 90° SYMBOL
- = PROPOSED WELL HEAD.
- ▲ = SECTION CORNERS LOCATED.

NAD 83 (TARGET BOTTOM HOLE)	NAD 83 (SURFACE LOCATION)
LATITUDE = 39°24'49.31" (39.413697)	LATITUDE = 39°24'51.13" (39.414203)
LONGITUDE = 108°06'16.88" (108.104689)	LONGITUDE = 108°05'54.89" (108.098581)
STATE PLANE-(COLO. CENTRAL-NAD83)	STATE PLANE-(COLO. CENTRAL-NAD83)
N = 1586118.12	N = 1586252.87
E = 2264196.81	E = 2265927.39

SCALE 1" = 1000'	DATE SURVEYED: 10-02-07	DATE DRAWN: 05-07-13
PARTY B.J. R.P. M.D.	REFERENCES G.L.O. PLAT	
WEATHER COLD	FILE WPX Energy Rocky Mountain, LLC	