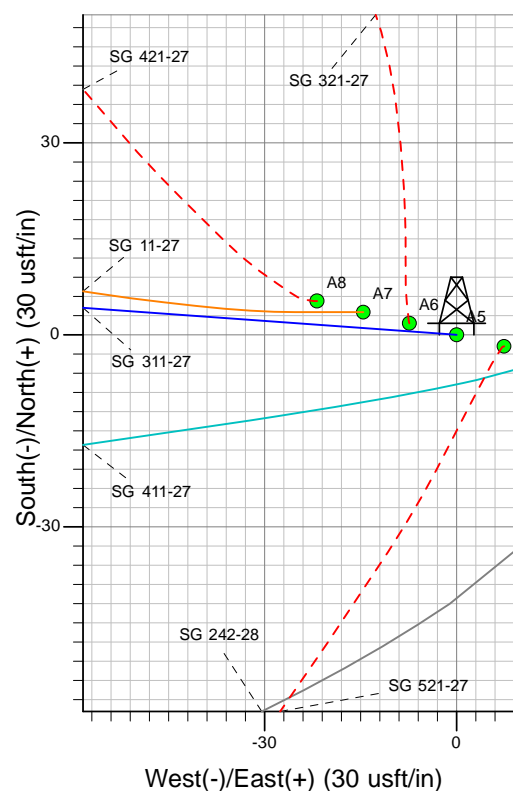
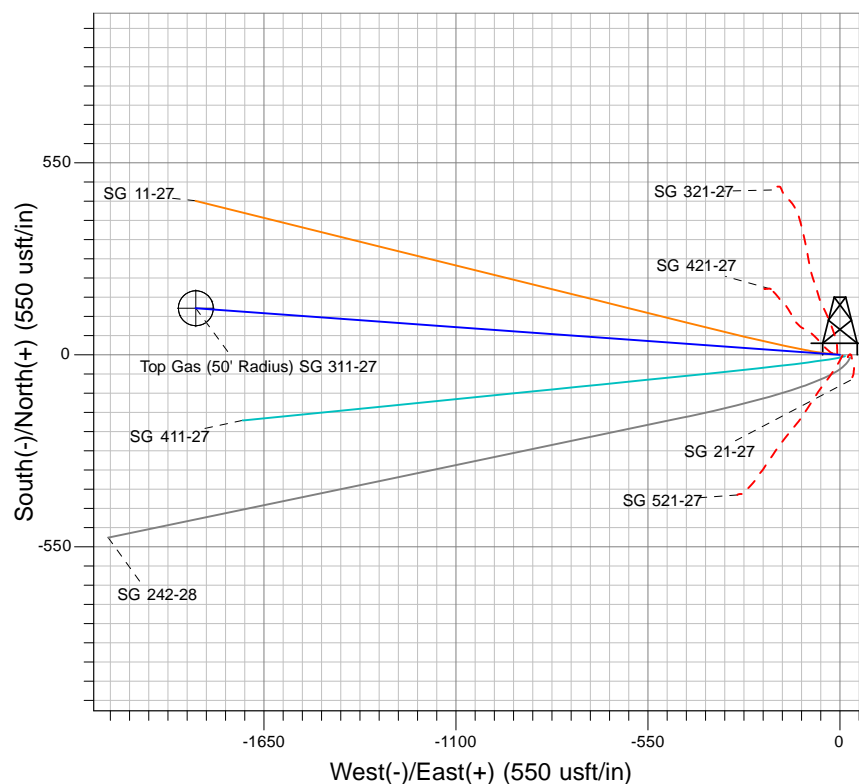
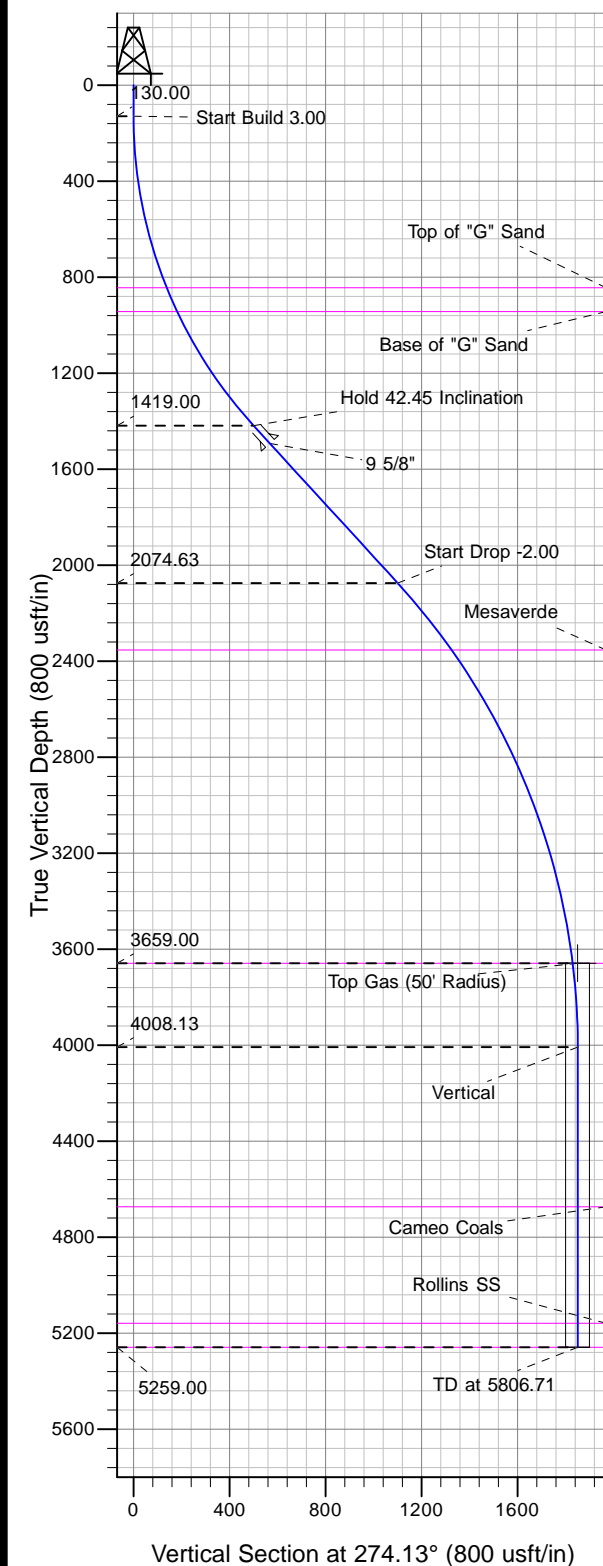




Well Name: SG 311-27  
 Surface Location: SG 21-27 Pad  
 North American Datum 1983 , US State Plane 1983 , Colorado Central Zone  
 Ground Elevation: 5258.00

+N/-S	+E/-W	Northing	Easting	Latitude	Longitude	Slot
0.00	0.00	1586256.90	2265912.66	39.41421	-108.09863	A5

KELLY BUSHING @ 5284.00usft (Nabors 577 (26' RKB) kjs)



Project: SG 27-07S-096W  
 Site: SG 21-27 Pad  
 Well: SG 311-27  
 Design #2 26Mar13 kjs

Azimuths to True North  
 Magnetic North: 10.82°  
 Magnetic Field  
 Strength: 52572.2snT  
 Dip Angle: 65.75°  
 Date: 12/12/2007  
 Model: IGRF2005-10

#### ANNOTATIONS

TVD	MD	Inc	Azi	+N/-S	+E/-W	VSect	Departure	Annotation
130.00	130.00	0.00	0.00	0.00	0.00	0.00	0.00	Start Build 3.00
1419.00	1544.93	42.45	274.13	36.05	-499.29	500.59	500.59	Hold 42.45 Inclination
2074.63	2433.45	42.45	274.13	79.25	-1097.41	1100.27	1100.27	Start Drop -2.00
3659.00	4205.84	7.00	274.13	131.79	-1825.04	1829.80	1829.80	Top Gas
4008.13	4555.84	0.00	0.00	133.33	-1846.34	1851.15	1851.15	Vertical
5259.00	5806.71	0.00	0.00	133.33	-1846.34	1851.15	1851.15	TD at 5806.71