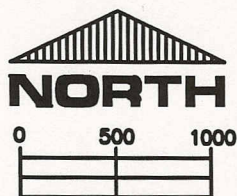
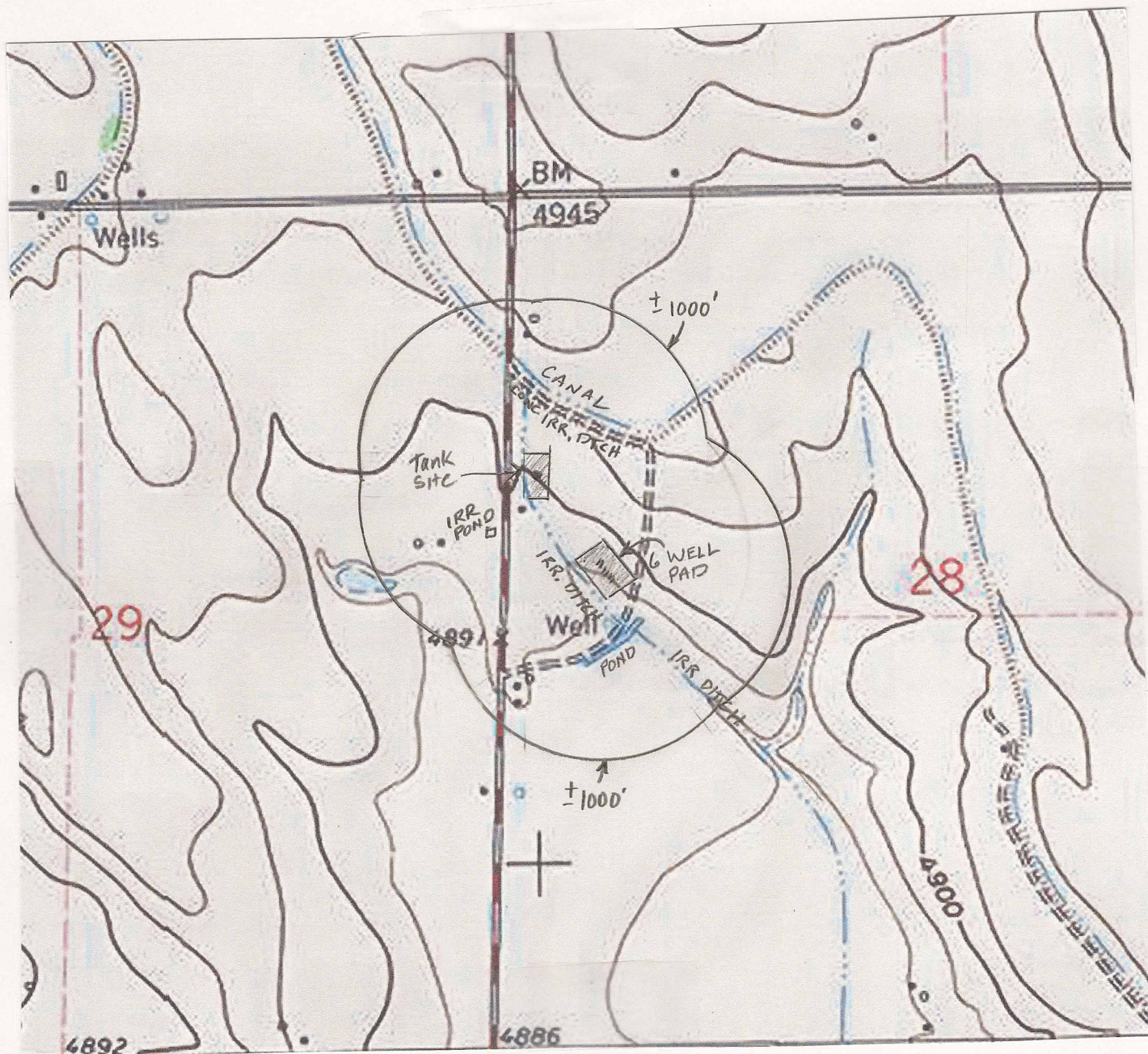


HYDROLOGY / TOPOGRAPHY MAP

W1/2 SEC. 28 T7N R66W, 6TH P.M.



APPROX. SCALE
1" = 1000'

(DISTANCES FROM THE 28K-223 LOCATION)

A CONCRETE IRRIGATION DITCH IS 869' NNE.

THE SOUTH TOP OF AN IRRIGATION CANAL IS 905' NNE.

IRRIGATION DITCHES ARE 156' SW & 332' SE.

IRRIGATION HOLDING PONDS ARE 240' SSE & 802' NW.

NO OTHER VISIBLE WATER FEATURES WITHIN 1000' OF DISTURBANCES.

PREPARED BY:

HORSESHOE SURVEYING, LLC
PO BOX 150458
LAKEWOOD, CO 80215
(720)872-0196

DRAWING DATE:
5-4-13

FIELD DATE:
4-26-13

BY:

TGC

WELL (PAD) NAME: THORNTON 28GK-TB (TANK SITE)
THORNTON 28GK-HZ Pad
28G-423, 28G-223, 28K-443, 28K-303,
28K-423, 28K-223

LOCATION:

WELD COUNTY, CO
W1/2, SEC. 28, T7N, R66W, 6TH P.M.