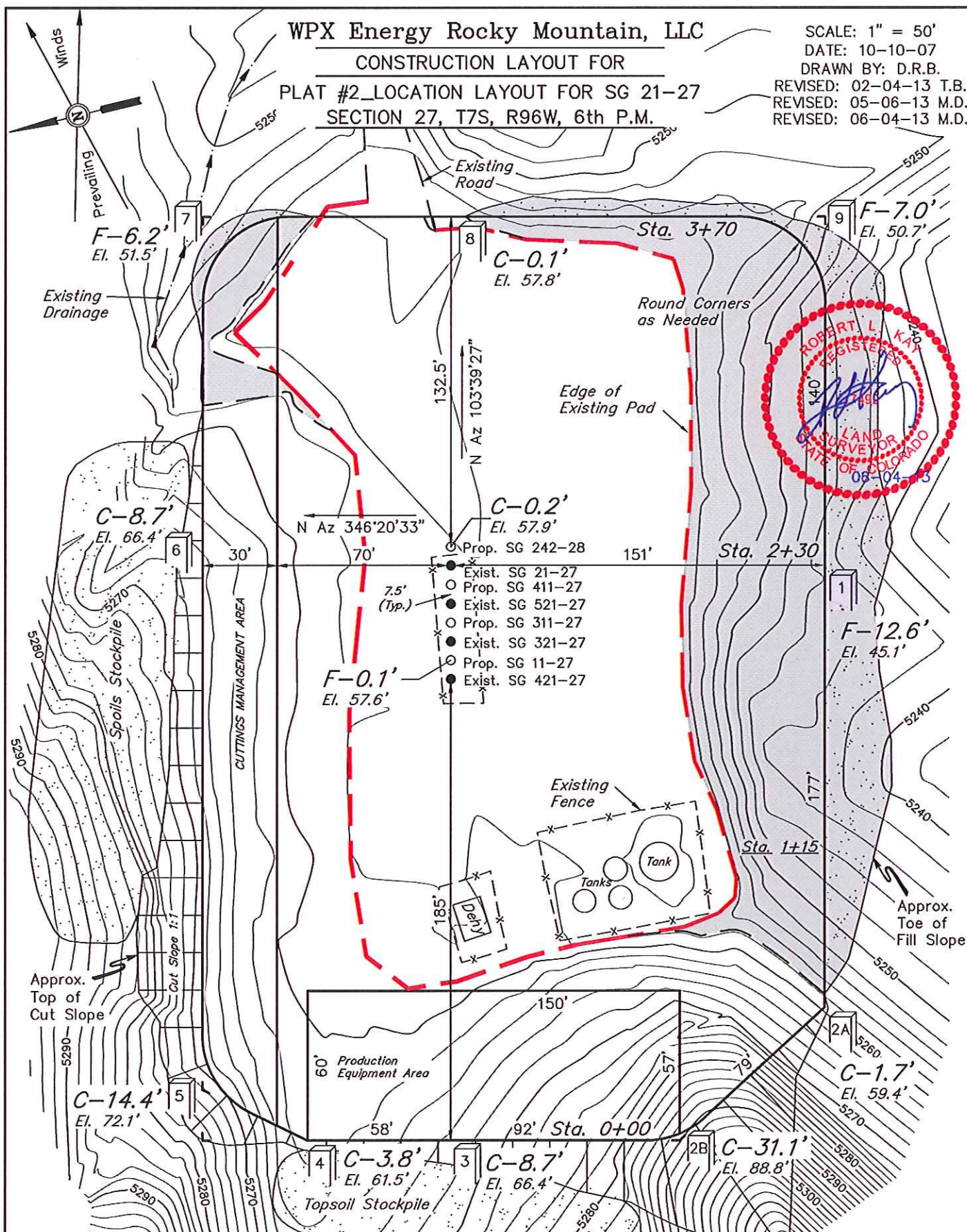


WPX Energy Rocky Mountain, LLC
CONSTRUCTION LAYOUT FOR
PLAT #2_LOCATION LAYOUT FOR SG 21-27
SECTION 27, T7S, R96W, 6th P.M.

SCALE: 1" = 50'
DATE: 10-10-07
DRAWN BY: D.R.B.
REVISED: 02-04-13 T.B.
REVISED: 05-06-13 M.D.
REVISED: 06-04-13 M.D.



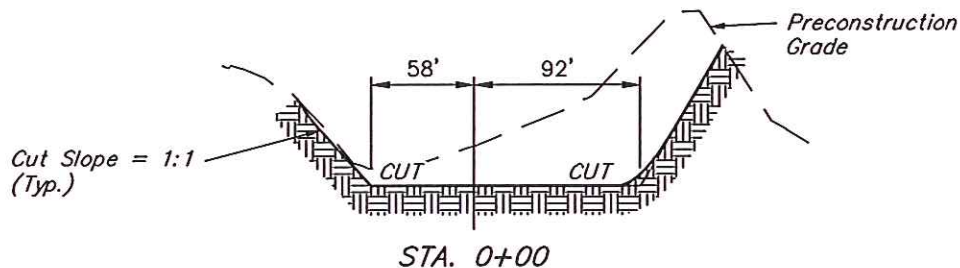
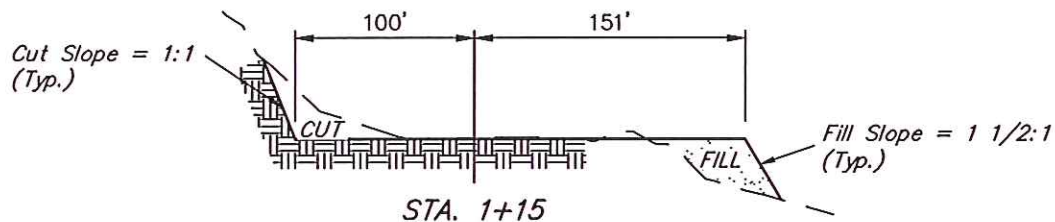
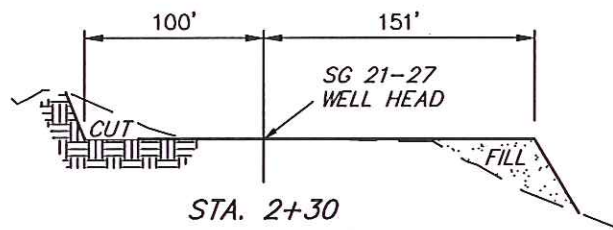
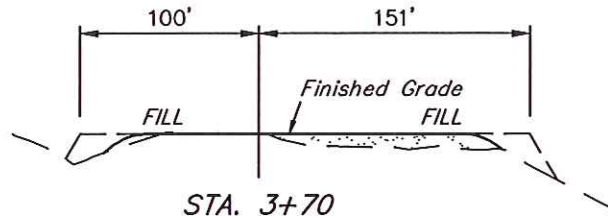
Elev. Ungraded Ground At SG 21-27 Well Head = 5257.7'
FINISHED GRADE ELEV. AT SG 21-27 WELL HEAD = 5257.7'

UINTAH ENGINEERING & LAND SURVEYING
85 So. 200 East * Vernal, Utah 84078 * (435) 789-1017

1" = 40'
X-Section
Scale
1" = 100'

DATE: 10-10-07
DRAWN BY: D.R.B.
REVISED: 02-04-13 T.B.
REVISED: 05-08-13 M.D.
REVISED: 06-04-13 M.D.

WPX Energy Rocky Mountain, LLC
CONSTRUCTION LAYOUT CROSS SECTIONS FOR
PLAT #3_TYPICAL CROSS SECTION FOR SG 21-27
SECTION 27, T7S, R96W, 6th P.M.



NOTE:

Topsoil should not be
Stripped Below Finished
Grade on Substructure Area.

* NOTE:
FILL QUANTITY INCLUDES
5% FOR COMPACTION

APPROXIMATE YARDAGES

(6") Topsoil Stripping = 1,270 Cu. Yds.
(New Construction Only)
Remaining Location = 9,280 Cu. Yds.
TOTAL CUT = 10,550 CU. YDS.
FILL = 6,650 CU. YDS.

EXCESS MATERIAL = 3,900 Cu. Yds.
Topsoil = 1,270 Cu. Yds.
EXCESS UNBALANCE = 2,630 Cu. Yds.
(After Interim Rehabilitation)

UINTAH ENGINEERING & LAND SURVEYING
85 So. 200 East * Vernal, Utah 84078 * (435) 789-1017