

Shable LB32-68HN

MD
5":100'

Company: Noble Energy Inc
Well Name: Shable LB32-68HN
UWI or LSD: 05-123-36800
Rig Id: Precision 828
State: Colorado
County/Parish: Weld
Country: USA
Survey Company: Ensign Directional
Job number: 828-09
Company Man 1 Cliff Kester
Directional Driller 1 Nick Brownwood
Directional Driller 2 Tanner Schwartz
MWD 1 Matt Mason
MWD 2 Dustin Davis

Log measurements:
Depth measured from: KB
Maximum temperature:

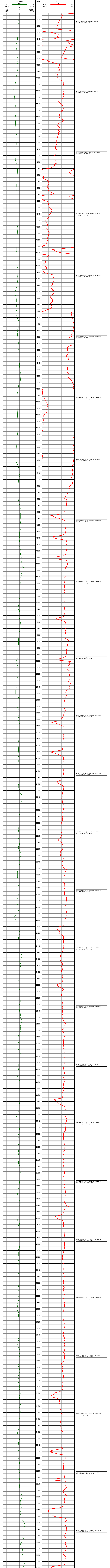
Depth **Date**
Start: 638 ft 04-15-2013
End: 10687 ft 04-23-2013

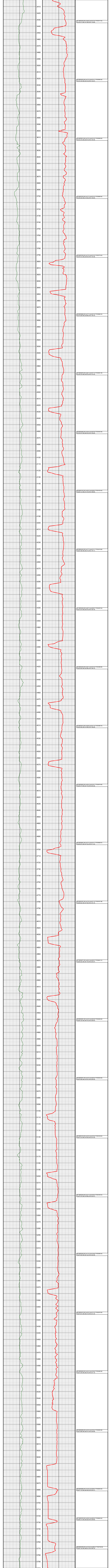
Casing Depth Size
Surface: 628 9.625
Intermediate: 6719 7

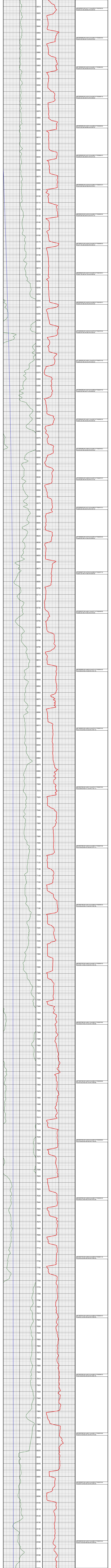
Mud Type:
Density:
Viscosity:
Rm: **Rmf:** **Rmc:**

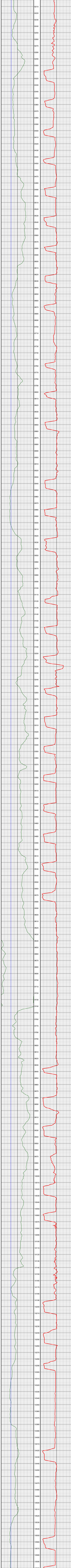
Elevations
KB: 4956
GL: 4940
DF: 4956

Run	Bit Size	Offsets Gamma Survey	Depths		Dates	
			Start	End	Start	End
1	8.75	56.20	51.20	638	04-15-2013	04-18-2013
2	6.125	60.61	55.61	6729	04-19-2013	04-23-2013
3						
4						
5						
6						
7						
8						
9						
10						









[P86 MD018250.00] Inc(91.1) Azm(266.3) YVD(6370.15)
[US(2647.40) NSI-486.52] EW(-2518.63)

[P87 MD018430.00] Inc(91.1) Azm(267.5) YVD(6367.40)
[US(2647.01) NSI-486.52] EW(-2518.63)

[P88 MD018430.00] Inc(91.1) Azm(267.5) YVD(6366.05)
[US(2647.01) NSI-486.40] EW(-2508.50)

[P89 MD018520.00] Inc(91.1) Azm(267.7) YVD(6363.40)
[US(2647.01) NSI-486.59] EW(-2508.41)

[P100 MD019030.00] Inc(90.8) Azm(268.4) YVD(6362.31)
[US(2647.15) NSI-484.40] EW(-2507.50)

[P101 MD019030.00] Inc(90.8) Azm(267.6) YVD(6361.86)
[US(2647.15) NSI-484.40] EW(-2507.50)

[P102 MD019030.00] Inc(90.8) Azm(267.6) YVD(6361.86)
[US(2647.15) NSI-486.23] EW(-2507.22)

[P103 MD019030.00] Inc(90.8) Azm(267.6) YVD(6361.86)
[US(2647.15) NSI-486.47] EW(-2507.12)

[P104 MD019030.00] Inc(90.8) Azm(267.6) YVD(6362.31)
[US(2647.15) NSI-486.71] EW(-2514.01)

[P105 MD019030.00] Inc(90.8) Azm(268.5) YVD(6362.30)
[US(2647.15) NSI-486.54] EW(-2506.97)

[P106 MD019140.00] Inc(91.3) Azm(268.5) YVD(6361.21)
[US(2647.15) NSI-486.87] EW(-2506.85)

[P107 MD019230.00] Inc(91.2) Azm(267.7) YVD(6359.12)
[US(2647.15) NSI-486.69] EW(-2504.57)

[P108 MD019230.00] Inc(90.8) Azm(267.7) YVD(6358.17)
[US(2647.15) NSI-486.69] EW(-2505.11)

[P109 MD019410.00] Inc(90.8) Azm(268.1) YVD(6358.77)
[US(2647.15) NSI-486.98] EW(-2506.79)

[P110 MD019500.00] Inc(90.8) Azm(268.5) YVD(6358.77)
[US(2647.15) NSI-486.70] EW(-2506.71)

[P111 MD019500.00] Inc(90.8) Azm(268.5) YVD(6358.77)
[US(2647.15) NSI-486.80] EW(-2507.55)

[P112 MD019500.00] Inc(90.8) Azm(268.3) YVD(6358.43)
[US(2647.15) NSI-487.19] EW(-2505.65)

[P113 MD019780.00] Inc(90.8) Azm(267.7) YVD(6358.12)
[US(2647.15) NSI-486.32] EW(-2505.59)

[P114 MD019870.00] Inc(91.1) Azm(268.4) YVD(6357.25)
[US(2647.15) NSI-486.33] EW(-2504.50)

[P115 MD019870.00] Inc(90.8) Azm(268.1) YVD(6356.84)
[US(2647.15) NSI-486.33] EW(-2504.50)

[P116 MD019870.00] Inc(90.8) Azm(267.7) YVD(6356.59)
[US(2647.15) NSI-486.33] EW(-2504.39)

[P117 MD019870.00] Inc(90.8) Azm(268.3) YVD(6356.76)
[US(2647.15) NSI-486.33] EW(-2504.39)

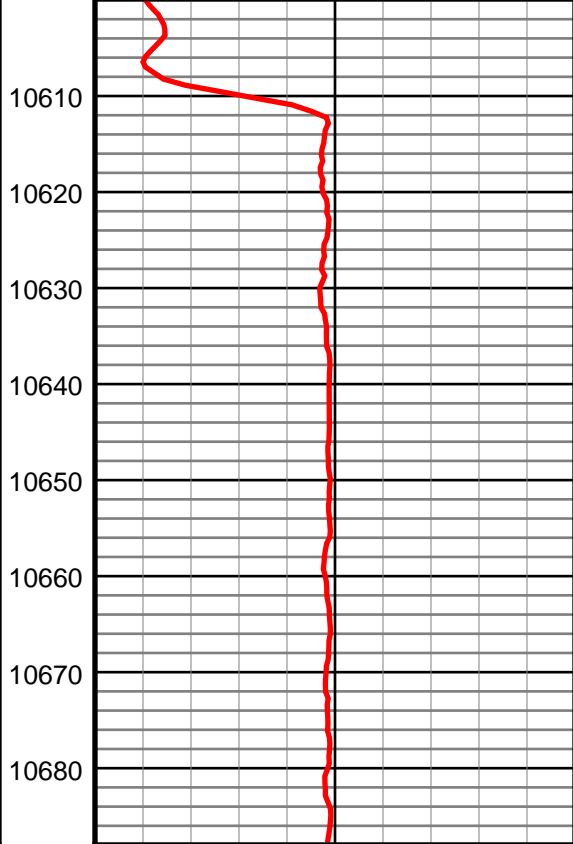
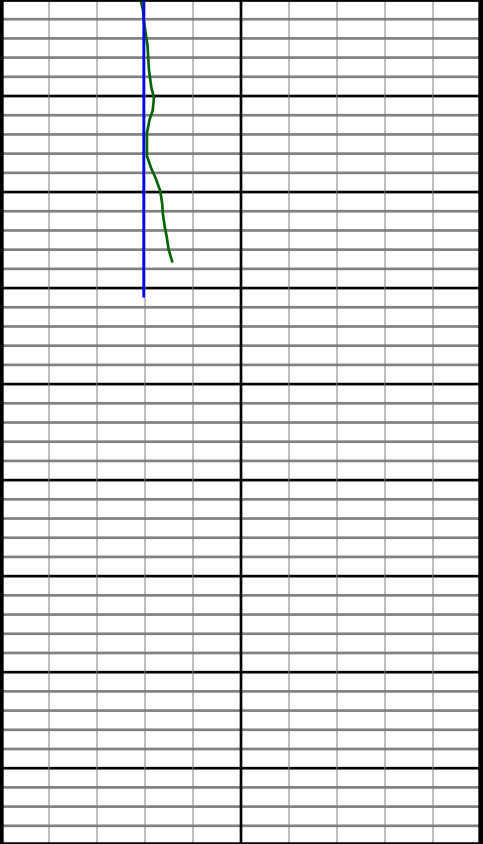
[P118 MD019870.00] Inc(90.8) Azm(268.3) YVD(6356.59)
[US(2647.15) NSI-486.33] EW(-2504.39)

[P119 MD019870.00] Inc(90.8) Azm(268.3) YVD(6356.59)
[US(2647.15) NSI-486.33] EW(-2504.39)

[P120 MD019870.00] Inc(90.8) Azm(268.3) YVD(6356.59)
[US(2647.15) NSI-486.33] EW(-2504.39)

[P121 MD019870.00] Inc(90.8) Azm(268.3) YVD(6356.59)
[US(2647.15) NSI-486.33] EW(-2504.39)

[P122 MD019870.00] Inc(90.8) Azm(268.3) YVD(6356.59)
[US(2647.15) NSI-486.33] EW(-2504.39)



#123 MD(10631.00) Inc(90.5) Azm(263.9) TVD(6356.67)
VS(4840.71) NS(-565.40) EW(-4807.58)

