

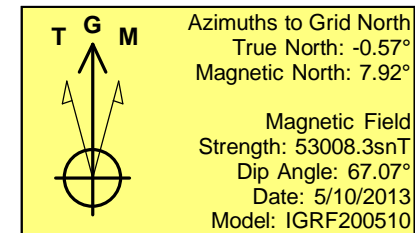
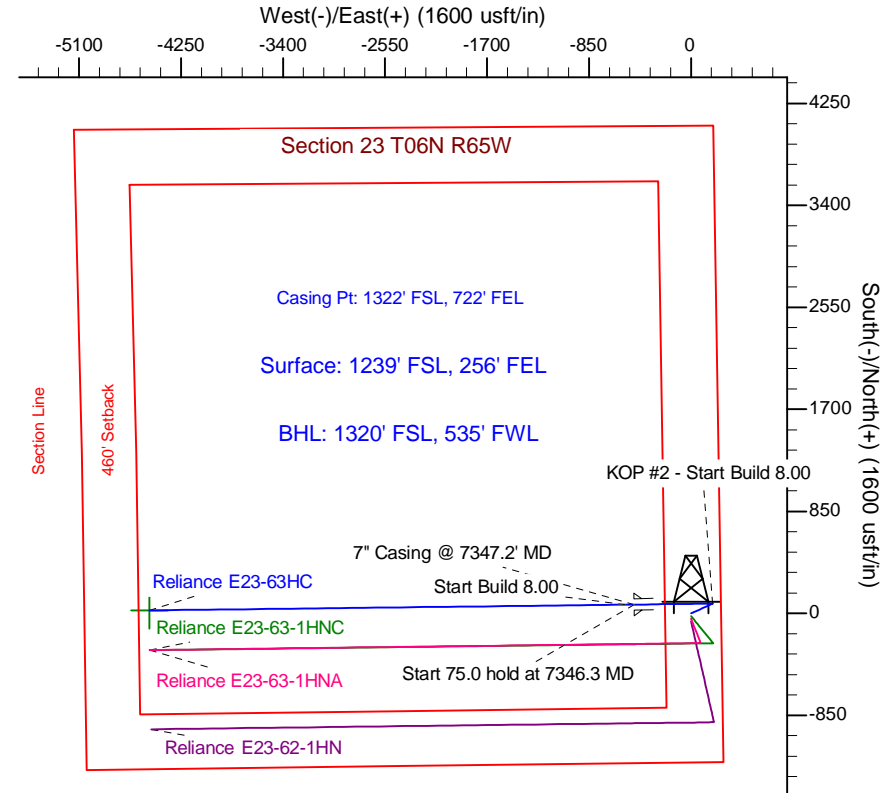
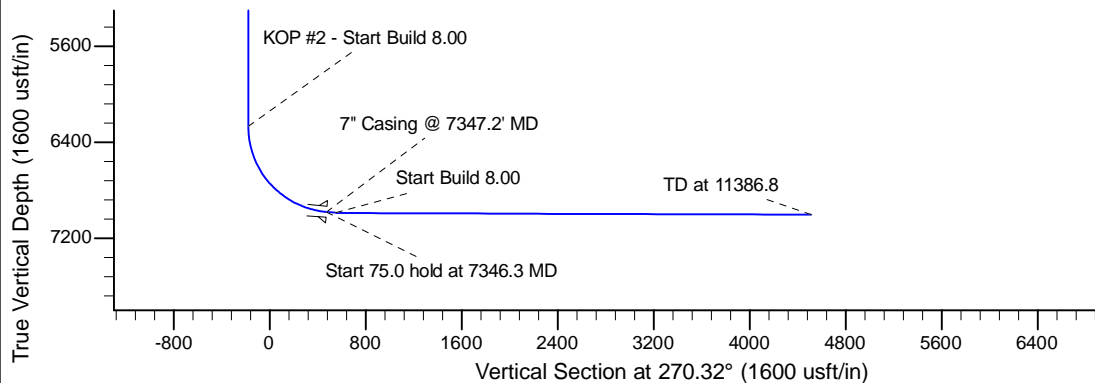
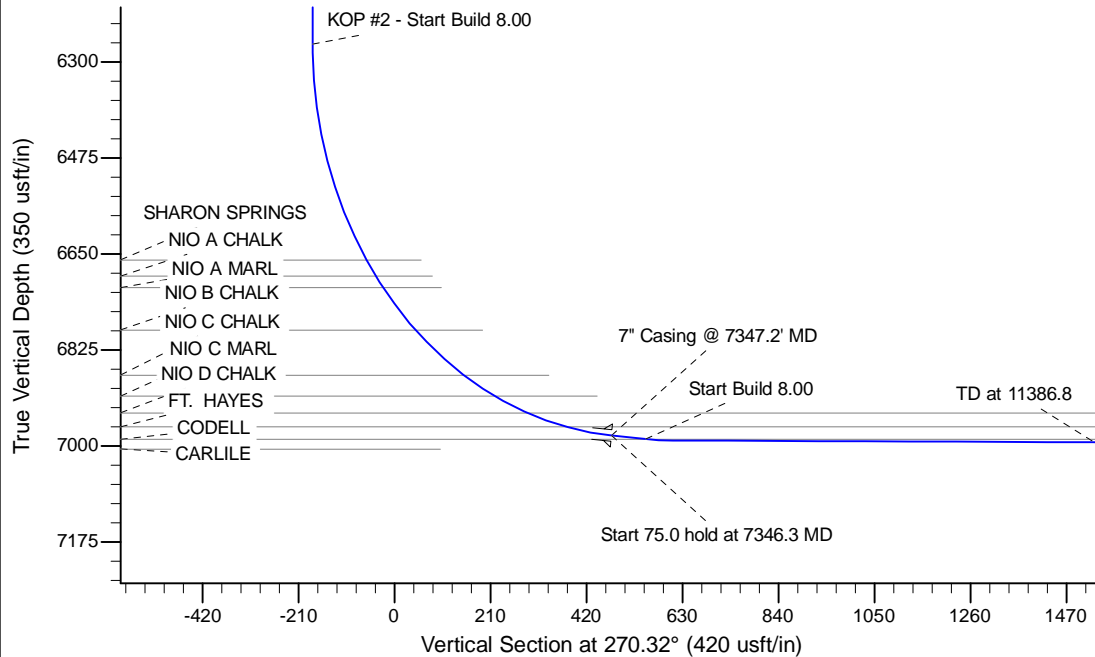
Project: Wattenberg Field
Site: E (Sec.23-T06N-R65W) Weld County, CO
Well: Reliance E23-63HC
Wellbore: Original Drilling
Design: APD - Rev 0

Northern Region Drilling

Geodetic System: US State Plane 1983
Datum: North American Datum 1983
Ellipsoid: GRS 1980
Zone: Colorado Northern Zone
System Datum: Mean Sea Level

SECTION DETAILS

Sec	MD	Inc	Azi	TVD	+N/-S	+E/-W	Dleg	TFace	VSect	Target
1	0.0	0.00	0.00	0.0	0.0	0.0	0.00	0.00	0.0	
2	1500.0	0.00	0.00	1500.0	0.0	0.0	0.00	0.00	0.0	
3	2101.4	12.03	65.77	2097.0	25.8	57.4	2.00	65.77	-57.2	
4	2444.9	12.03	65.77	2433.0	55.2	122.6	0.00	0.00	-122.3	
5	3046.4	0.00	0.00	3030.0	81.0	180.0	2.00	180.00	-179.5	
6	6283.8	0.00	0.00	6267.4	81.0	180.0	0.00	0.00	-179.5	
7	7346.3	85.00	269.32	6980.9	73.2	-473.7	8.00	269.32	474.1	
8	7421.3	85.00	269.32	6987.4	72.3	-548.4	0.00	0.00	548.8	
9	7481.3	89.80	269.32	6990.2	71.6	-608.4	8.00	0.00	608.7	
10	11386.8	89.80	269.32	7003.8	24.9	-4513.6	0.00	0.00	4513.6	Reliance E23-63HC BHL 1320'FSL, 535'FWL



WELL DETAILS: Reliance E23-63HC					
Ground Level: 4694.0					
0.0	0.0	Northing	Easting	Latitude	Longitude
		1414400.76	3244353.78	40.467610	-104.621750
Plan: APD - Rev 0 (Reliance E23-63HC/Original Drilling)					
Created By: Shailey Jewell		Date: 14:17, May 10 2013			
Checked: _____		Date: _____			
Reviewed: _____		Date: _____			
Approved: _____		Date: _____			